



INTERIOR COURTESY LIGHTS

(UNIVERSAL FITMENT)

INSTALLATION INSTRUCTIONS

CONTENTS

(1) Interior Lighting Kit

TOOLS REQUIRED

Isopropyl Alcohol
Microfiber Cloth

STEP 1



Lay (2) LED Strips in front of each front seat and along the rear seat area. Route the wiring for the rear seat in between the passenger seat and the center console.

STEP 2

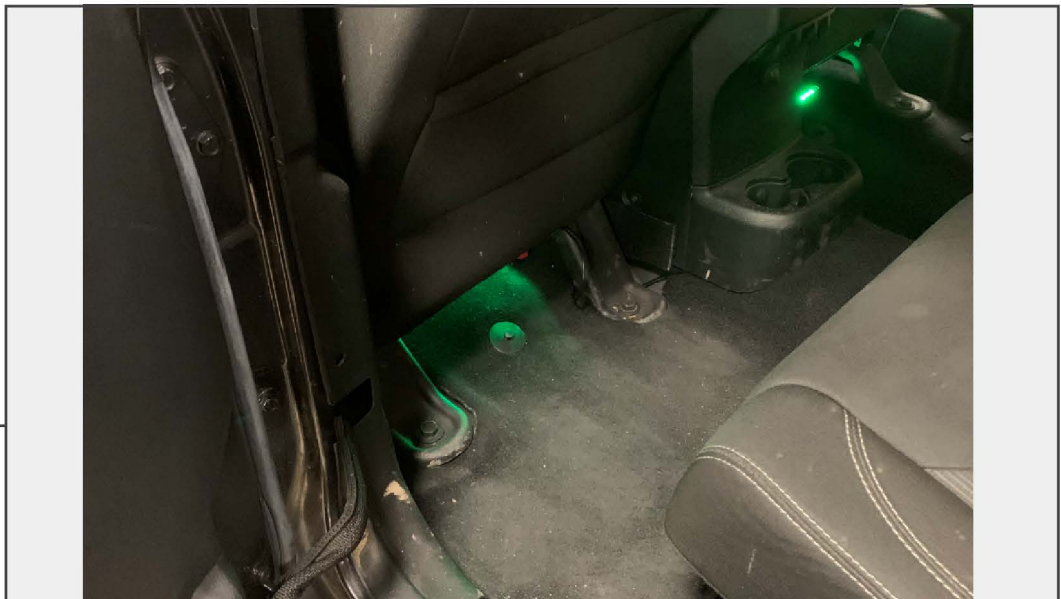


Clean the mounting surface for the LED Strip. Peel back the film on the double sided tape, then adhere the LED Strip underneath the dashboard.



STEP 3

Route the remaining LED Strips towards the rear of the vehicle. Tuck the wiring neatly along the interior trim panels.



STEP 4

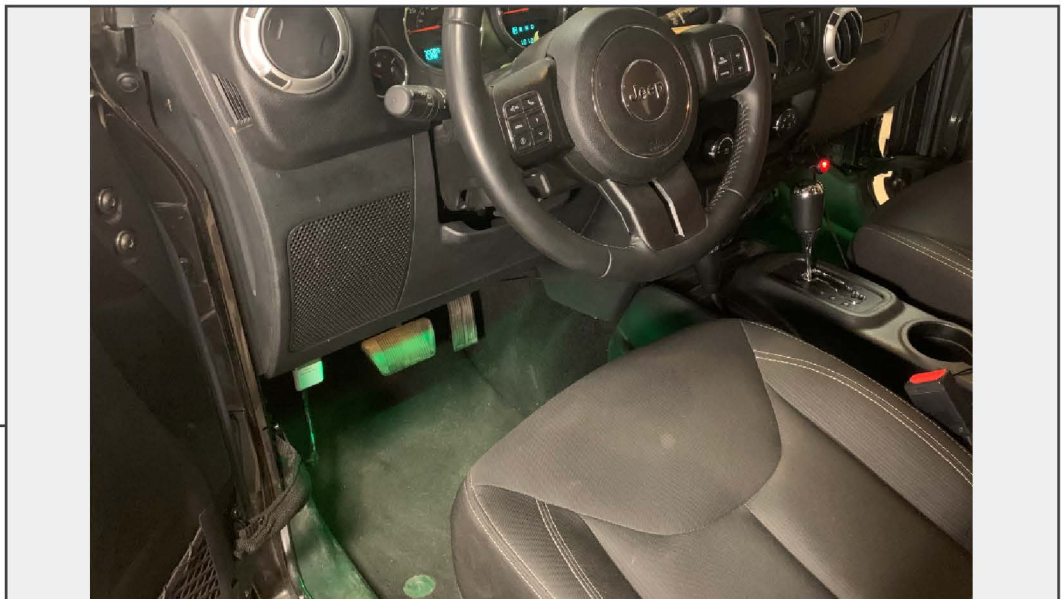
Clean the mounting surface for the LED Strip. Peel back the film on the double sided tape, then adhere the LED Strip to the desired location in the rear of the vehicle.



STEP 5

Plug in the 12V adapter, then press the power button. Use the remote to change the lighting and function modes.

Note: Be sure the module and the sensor are visible to be able to change functions using the remote.



STEP 6

Installation is now complete.