



PN: 37100, 37200, 37300
Model Number: 37M-BJRK-6W, 12W, and 20W ton with Jack

PN: 37101, 37201, 37301
Model Number: 37M-BJRK-6, 12, and 20 ton no Jack
PN Instructions: 37101
Revised 06/20/19



Bottle Jack Recovery Kit Instruction Manual

Pictured: 6 ton Kit with Jack

Pictured: 12/20 ton Kit with Jack



| Kit With Bottle Jack | Kit Without Bottle Jack | Bottle Jack Ext. | SJR SERIES Pad | SJAF SERIES Pad | 3" Ext. | 6" Ext. | 8"-12" Ext. | Safe Jack Bag |
|---|-------------------------------|------------------|----------------------|----------------------|----------------------|----------------------|----------------------|---------------|
| | | Screw Collar | | | | | | |
| PN:37100 Model:37M-BJRK-6W 6 Ton All extensions are machined to 1.26" ID | PN:37101 Model:37M-BJRK-6 | (A) (I) | PN:37131 X (B) | PN:37130 X (C) | PN:37111 X (D) | PN:37112 X (E) | PN:37113 X (F) | (G) |
| PN:37200 Model:37M-BJRK-12W 12 Ton All extensions are machined to 1.73" ID | PN:37201 Model:37M-BJRK-12 | (H) (I) | PN:37231 X (B) | PN:37230 X (C) | PN:37211 X (D) | PN:37212 X (E) | N/A | (G) |
| PN:37300 Model:37M-BJRK-20W 20 Ton All extensions are machined to 2.23" ID | PN:37301 Model:37M-BJRK-20 | (H) (I) | PN:37331 X (B) | PN:37330 X (C) | PN:37311 X (D) | PN:37312 X (E) | N/A | (G) |

The warnings, precautions, and instructions discussed in this manual cannot cover all possible conditions and situations that may occur. The operator must understand that common sense and caution are factors, which cannot be built into this product, but must be supplied by the operator.



WARNING: Do not allow anyone in or near the vehicle while using the jack. Sudden movement and weight shift can result in instability. Keep all personnel a safe distance away from the vehicle.



WARNING: Do not attempt to lift the vehicle on a side or longitudinal slope. The vehicle can slide or roll causing severe injury or death.



WARNING: Before lifting, place the vehicle's transmission in "PARK" for automatic transmissions and Low gear (1st gear) for manual transmissions. Set the vehicle's emergency brake. Then, block the wheel diagonal to the wheel that is being lifted, with wheel chocks. Failure to follow this instruction can result in severe injury or death to personnel.

Step 1: Recovery Kits are pictured with jack model number **37M-BJRK-6W, 12W, and 20W** we also offer kits with no Jack model number **37M-BJRK-6, 12, and 20**.

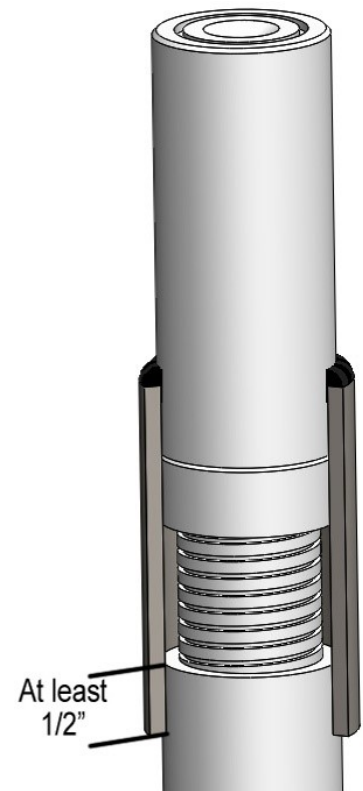
If you are missing any parts please call 1-509-735-2106 immediately and reference which parts.

Step 2: All extensions or pads must have at least 1/2" engagement down onto the bottle jack ram. Extending the screw further than this will cause the extension and/or pad to become unstable.

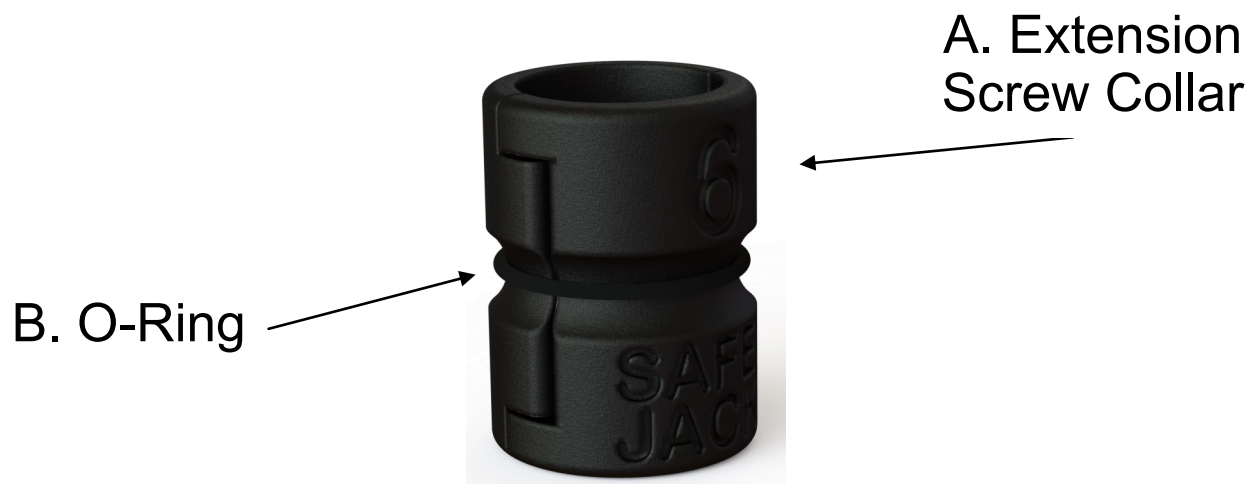
All of our kits come with Extension Screw Collars.

These Extension screw collars are to be installed on bottle jacks that do not have 1.25" ram diameter, but fit into our specification for ESC use. These collars provide the proper fit for jack extensions and jack pads but they also give the operator 100% of the usable stroke of the jack by extending and supporting the bottle jack extension screw. The collars are easy to install taking only a few seconds and they can be removed just as easily.

Instructions for use are on the following pages. Please contact us with any questions on proper use.



The warnings, precautions, and instructions discussed in this manual cannot cover all possible conditions and situations that may occur. The operator must understand that common sense and caution are factors, which cannot be built into this product, but must be supplied by the operator.



1. Unpack the 37M-ESC and ensure that all parts are included:

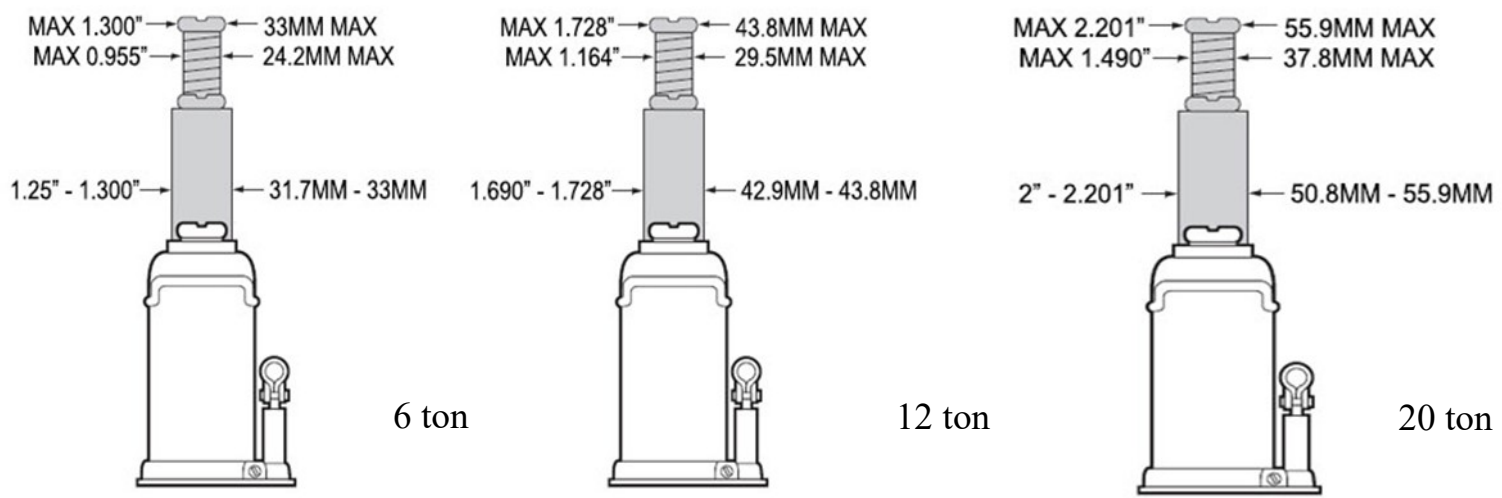
- A. 1x Extension Screw Collar
- B. 1x O-Ring

If you are missing any parts please call 1-509-735-2106 immediately and reference which parts.

| PN | Description | Mfg. Model Number |
|-------|---|-------------------|
| 37110 | Extension screw collar - for 6 ton Omega Jack | 37M-ESC6 |
| 37210 | Extension screw collar - for 12 ton Omega Jack | 37M-ESC12 |
| 37310 | Extension screw collar - for 20 ton Omega Jack | 37M-ESC20 |
| 37109 | O-RING, 1-1 1/8, 1/16 TH. BUNA-N - for 6 ton ext. screw collar | 37M-ORINGØ22 |
| 37209 | O-RING, 1 3/8-1 1/8, 1/16 TH. BUNA-N - for 12 ton ext. screw collar | 37M-ORINGØ28 |
| 37309 | O-RING, 1 3/4-1 7/8, 1/16 TH. BUNA-N - for 20 ton ext. screw collar | 37M-ORINGØ31 |

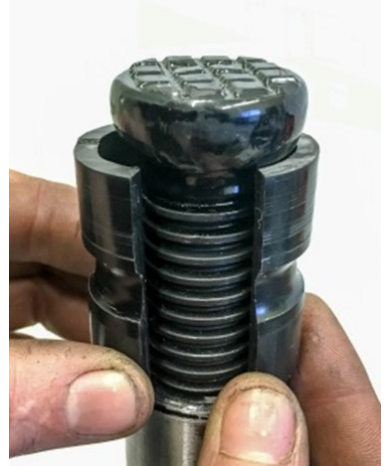
Purpose: The Extension screw collars are installed on bottle jacks to provide the proper fit for jack extensions and jack pads but they also give the operator 100% of the usable stroke of the jack by extending and supporting the bottle jack extension screw. The collars are easy to install taking only a few seconds and they can be removed just as easily.

Limitations: The EXTENTION SCREW COLLARS (ESC) are designed to work with 6, 12 or 20 ton rated jacks that fall within the minimum and maximum size as shown below.



Installation:

1. Make sure that your jack is appropriately sized for the ESC you are using. See figures above.
2. Remove the O-Ring that holds the ESC together.
3. Extend the screw of your jack until the ESC will fit around the screw and close together.



Installation:

4. Install the O-Ring back over the ESC so that the O-ring fits into the groove.

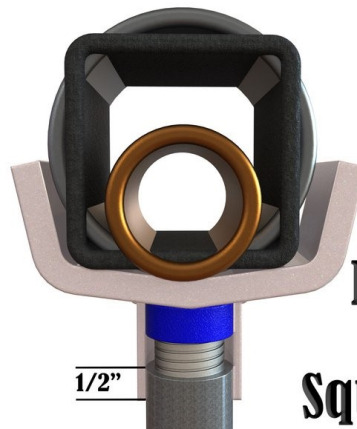
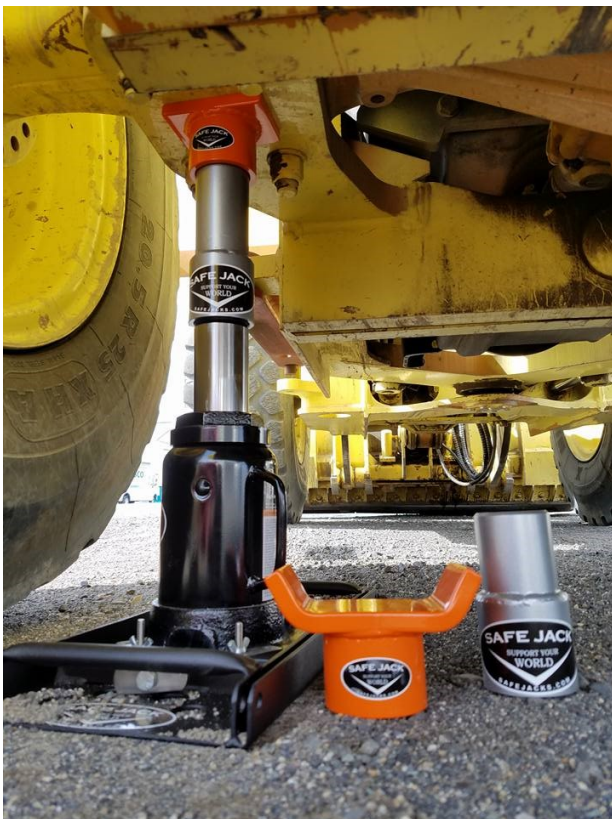
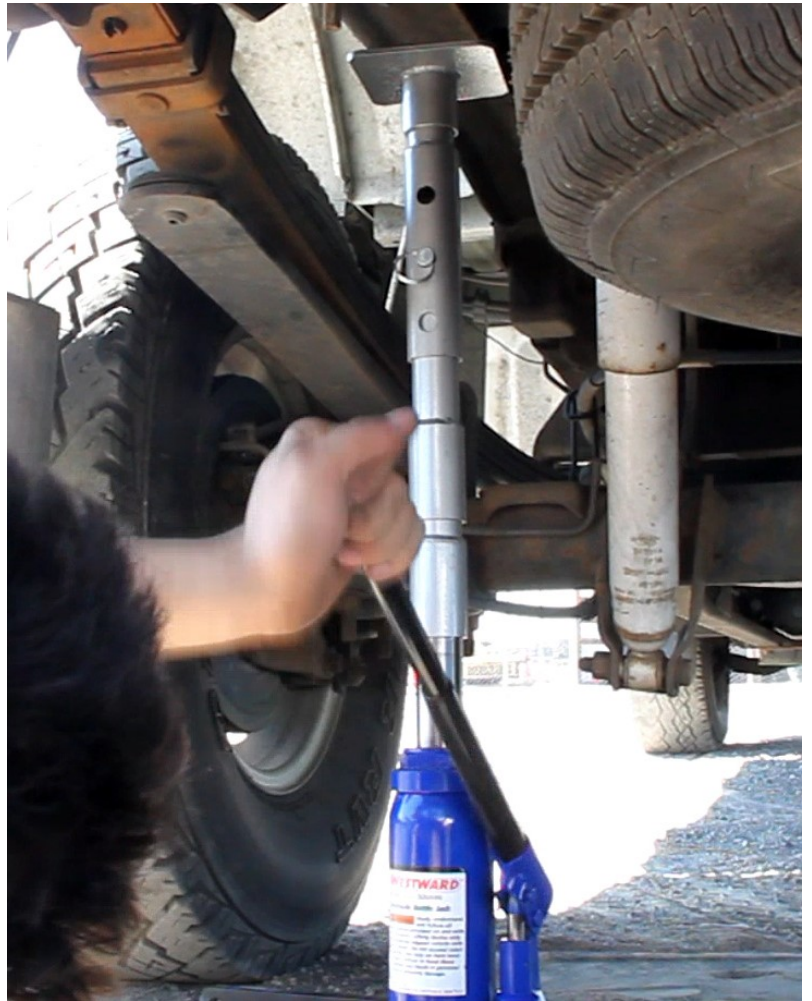


Installation:

5. Turn the screw in until it bottoms snugly against ESC.



Bottle Jack Recover Kit in Use



Round fits 2-3.5"
Flat fits up to 3"
Square fits up to 3"

WHAT HAPPENS WITHOUT JACK EXTENSIONS



Download your favorite QR reader App
scan the QR code to the right and see the
bottle jack recovery kit in action.



SafeJacks.com

(509) 735-2106



Safe Jack by Bogert Manufacturing Inc.
3606 N. Swallow Ave. Ste 200
Pasco, WA 99301 USA
(509) 735-2106 Phone
(800) 627-8088 Toll Free
(509) 272-0280 Fax
www.safejacks.com
info@bogert-mfg.com

