

FEATURE

High quality injection molding fender flares

Made from light weight impact resistance Polypropylene, non-cracking, non-warping, 100% UV-resistant.

Factory holes -

some models may require drilling

Injection molded smooth(Not Textured) matt black finish for paintable

Professional installation is always recommended

Step 1 Before Installation

A.Fit: Fit of the flare to vehicle should be confirmed. Some fling, sanding, or cutting may be adopted for proper fit if necessary.

B.Painting: (optional) if paint is desired it must be done prior of installing flares on vehicle. Clean outer surface with a good grade degreaser.

C.Metal protection: Rust resistance paint of all exposed fasteners and bare metal should be done BEFORE installing flares. Undercoating the inner fender wells should be done AFTER flare attachments have been completed.

D.Flares may interfere with existing decals on vehicle. If you wish. Remove decals prior to installation of flares.

FOR TUNDRA 2014-2021 Fender Flares Set of 4

TOOLS FOR EASY INSTALLATION:

- 1/2" Wrench
- 7mm Socket
- 3/8" Ratchet
- #2 Phillips Driver
- Grease Pencil
- Awl (optional)



SCAN TO SEE



INSTALL VIDEO

LIMITED LIFETIME WARRANTY AGAINST ANY MANUFACTURING DEFECTS

- To claim a warranty, you must provide Proof of Purchase.

Included in Hardware Kit:

- 

SW1-0036,
M6-3 x 20mm Hex
Magnit Black Screw,
34 pcs
- 

RV1-P009,
8x15x20mm
Retainer,
2 pcs
- 

GP1-0005,
Large Wiper Style
Edge Trim,
324 inches
- 

ET1-0002,
Edge Trim Tool,
1 pc
- 

SW1-0067,
5/16 x 18 x 3/8"
SS Torx Screw,
34 pcs
- 

WA1-0012,
320 x 700 x .03
SS Washer,
34 pcs
- 

NU1-0019,
5/16-18 Jam Fin.
Nylock Nut,
34 pcs
- 

SW1-0052,
T-45 Torx Bit,
1 pc

Components List:



Driver Side x1

Passenger Side x1



Driver Side x1

Passenger Side x1



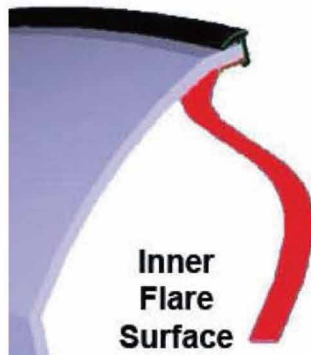
Brackets x2

If your flares already have the edge trim and pocket hardware installed, skip to Front Flare Installation Step 4.

EDGE TRIM INSTALLATION

A. Peel two to three inches of red vinyl backing away from Edge Trim (GP1-0005) tape. Applying the adhesive side of the edge trim to the inner side of the flare, affix the edge trim to the top edge of the flare (the portion that comes in contact with the vehicle).

B. Press edge trim into place along the top edge of the flare in one-foot increments, pulling red vinyl backing free as you continue to work your way around the top edge of the flare.



Pocket Hardware Installation Procedures:



Put a Washer (WA1-0012) on each Bolt (SW1-0059).



Put each Bolt/Washer combination through a pocket hole in the flare, Bolt head and Washer on the outside.



Place a Nut (NU1-0019) over the end of each Bolt and tighten, using a 1/2" wrench for the Nut and the supplied Torx Bit (SW1-0052) for the Bolt. Repeat for remaining pockets.

Front Flare Installation Procedures (Driver's Side):



Using a 10mm socket, remove two factory fasteners from front of wheel well.



Using a 10mm socket, remove two factory screws from factory mud guard as shown.



Remove push retainer from underside of factory mud guard. Remove Mud Guard from Vehicle.



Using two supplied 20mm Hex Screws (SW1-0036), attach bracket to factory holes with a 10mm socket.



Place flare on fender, aligning holes with clips on the bracket. Start two supplied 20mm Hex Screws (SW1-0036) through two holes on the top of the flare and into clips.



Start three supplied 20mm Hex Screws (SW1-0036) through three rear holes in flare and into factory holes in rear of wheel well.

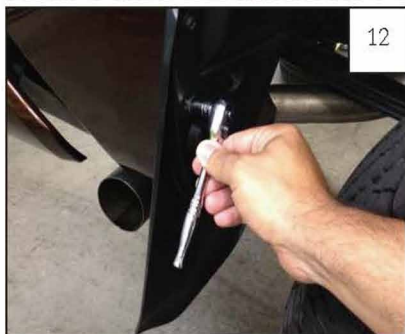


Start two supplied 20mm Hex Screws through forward most holes in flare and into factory hole locations.



Ensure flare is properly positioned and tighten all screws. (Repeat for other side of vehicle)
Installation Complete.

Rear Flare Installation Procedures (Passenger Side):



Using a socket wrench with a 10mm socket, factory screw second from the top of the mud guard.



Remove push retainer from underside of factory mud guard and remove mud flap.



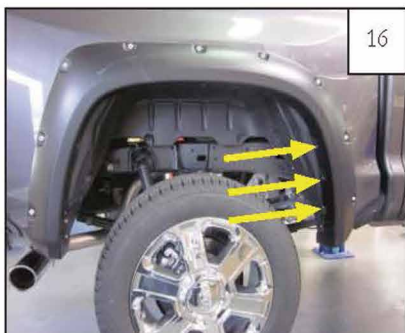
14

Hold the flare firmly on the fender. Start three supplied 20mm Hex Screws (SW1-0036) through the top center holes of the flare and into factory holes in fender.



15

Start two supplied 20mm Hex Screws through the rearward most holes of flare and into the factory hole in fender.



16

Using 10mm socket, start three supplied 20mm Hex Screws through the forward most holes of flare and into factory holes in fender.



17

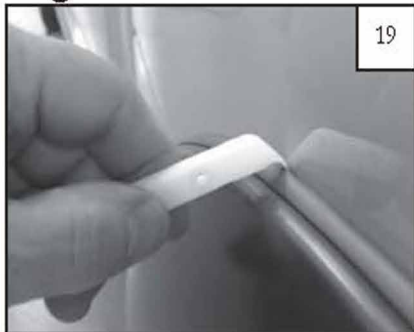
Install supplied Push Retainer (RV1-P009) into factory hole on underside of flare.



18

Ensure flare is properly positioned and tighten all screws. (Repeat for other side of vehicle)
Installation complete.

Edge Trim Tool Procedures:



Using supplied Edge Trim Tool (ET1-0002), seat edge trim against vehicle by hooking curved end under edge trim at one end of flare. Next, slide around outer edge of flare to the other end.



Using flat end of supplied Edge Trim Tool (ET1-0002), seat edge trim against flare by inserting straight end between edge trim and flare at one end. Next, slide around entire edge to the other end.