



CATBACK EXHAUST SYSTEM

(2009-2021 TUNDRA ; BUILT AFTER 08/2008)
(EXCLUDING DOUBLE CAB WITH 8' BED)

INSTALLATION INSTRUCTIONS

CONTENTS

- (1) LH Front Pipe
- (1) RH Front Pipe
- (1) Muffler
- (1) LH Over Axle Pipe
- (1) RH Over Axle Pipe
- (1) LH Tail Pipe
- (2) Rear Exit Pipes
- (2) Side Exit Pipes
- (2) Exhaust Tips
- (9) 2.5" Exhaust Clamps
- (2) Hanger Clamps
- (1) Hanger Bracket w/ Flat Plate
- (1) M8 Nut
- (1) M8 Lock Washer
- (1) M8 Flat Washer
- (1) Rubber Isolator

TOOLS REQUIRED

- 13mm, 14mm, 16mm Sockets
- Ratchet
- Spray Lubricant
- Floor Jack
- Jack Stands

SKU # TU62693 / TU62694



STEP 1



Lift and support the vehicle using a floor jack and jack stands. Locate the LH and RH side exhaust flanges. Remove the (2) 14mm bolts from each exhaust flange. Ensure the gaskets remain on the flange during removal.

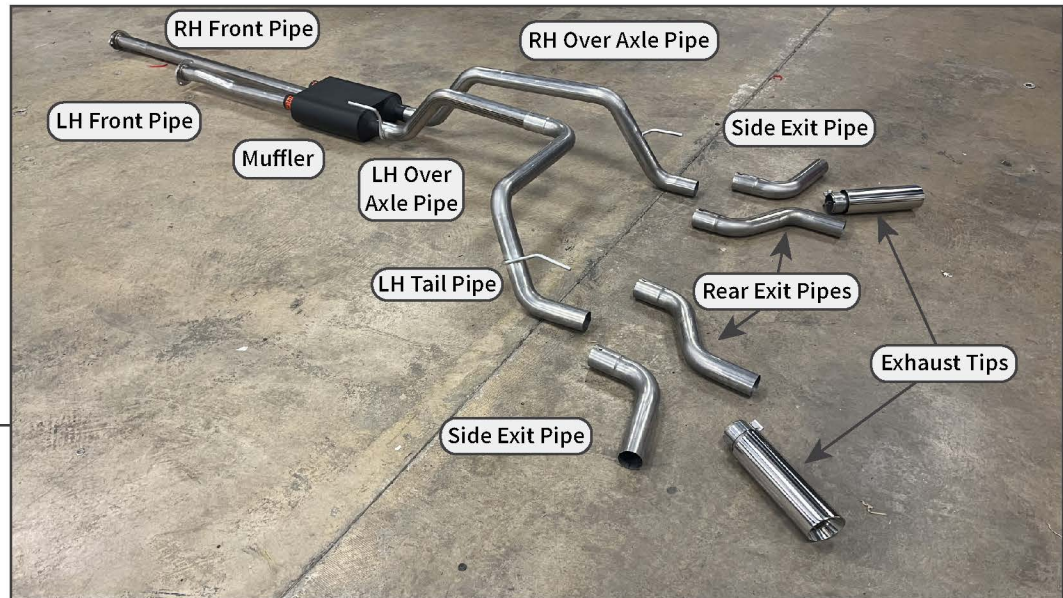
Note: OEM hardware and gaskets will be reused.

STEP 2



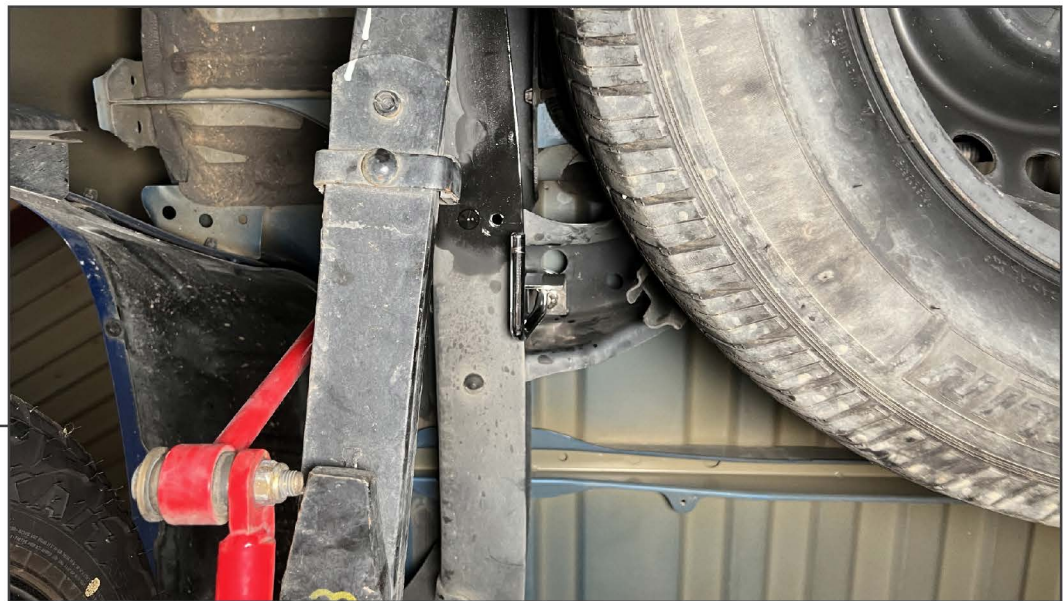
Remove the various rubber exhaust hangers from the original exhaust system. Remove the original exhaust system from the vehicle.

Note: The tailpipe can be separated from the muffler at the rear of the muffler, if necessary.



STEP 3

Lay out and identify all exhaust components.



STEP 4

Locate the crossmember above the spare tire. Using the included hanger bracket, fit the hanger bracket stud through the crossmember, and secure using the included flat plate, M8 flat washer, M8 lock washer, and M8 nut.



STEP 5



Ensure the original exhaust flange gaskets are in place. Install the LH and RH front pipes to the vehicle exhaust using the (2) original 14mm bolts. Use the (2) hanger clamps to secure the front pipes to the vehicle rubber hangers.

Place (1) 2.5" exhaust clamp on the end of each front pipe to prepare for the muffler.

STEP 6



Fit the muffler to the front pipes, and loosely install into place using the (2) previously placed clamps.

Fit (2) 2.5" exhaust clamps to each muffler outlet to prepare for the over axle pipes.



STEP 7

Fit the RH over axle pipe into the vehicle rubber hanger and into the muffled outlet. Loosely secure the pipe into place using the previously placed muffler clamp.

Fit (1) 2.5" exhaust clamp onto the end of the over axle pipe to prepare for the exit pipe.



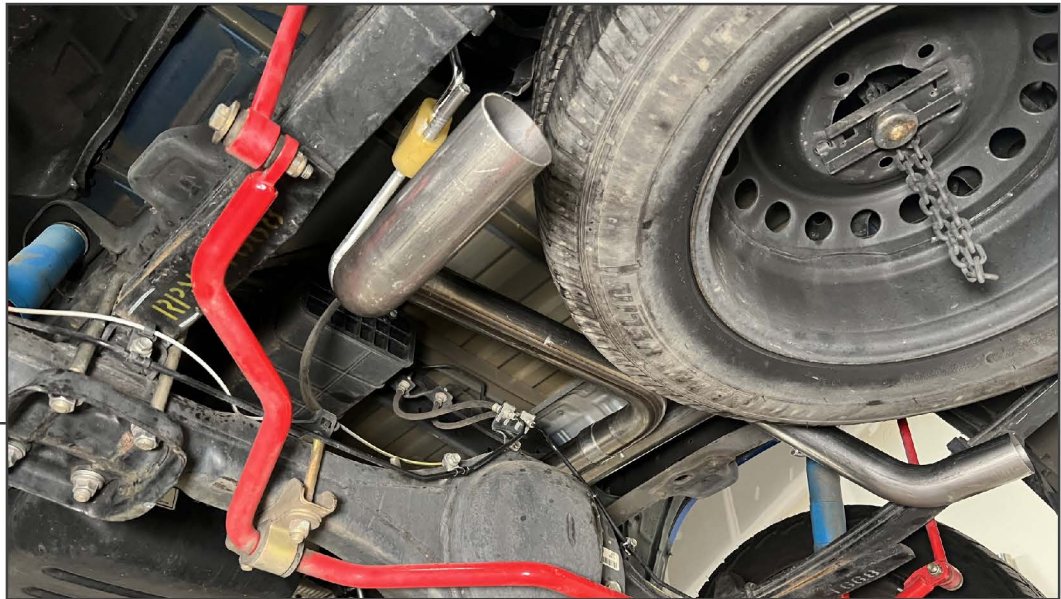
STEP 8

Fit the LH over axle pipe into the vehicle rubber hanger and into the muffled outlet. Loosely secure the pipe into place using the previously placed muffler clamp.

Fit (1) 2.5" exhaust clamp onto the end of the over axle pipe to prepare for the LH tail pipe.



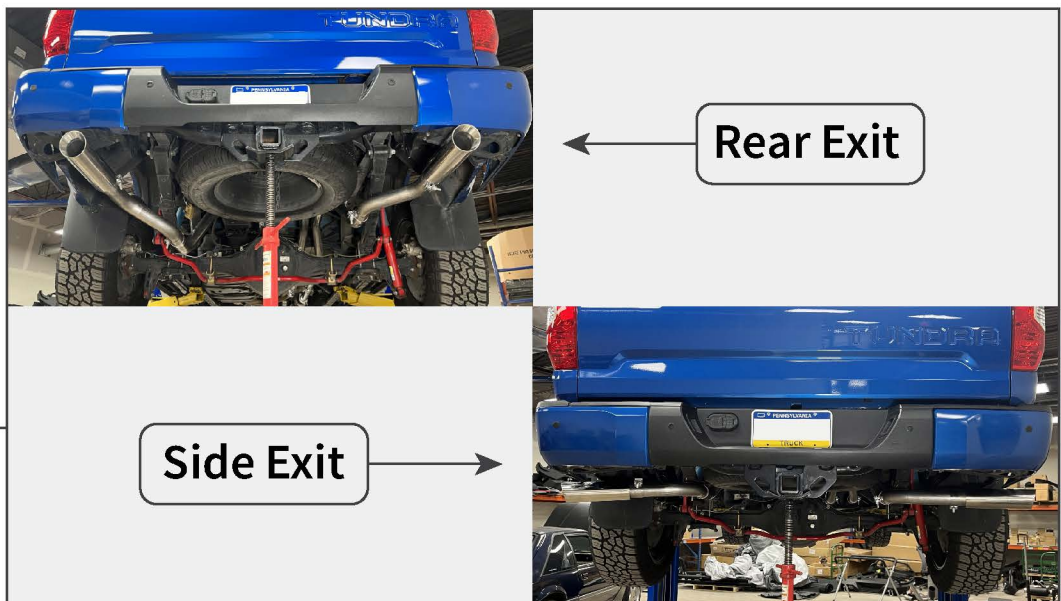
STEP 9



Fit the LH tail pipe onto the LH over axle pipe. Then, fit the included rubber isolator onto the previously installed frame mounting bracket and the tail pipe. Loosely secure the over axle pipe and the tail pipe using the previously placed exhaust clamp.

Fit (1) 2.5" exhaust clamp onto the end of the tail pipe to prepare for the exit pipe.

STEP 10



Determine the desired exhaust exit (side or rear exit). Using the desired exit pipes, loosely secure the exit pipe to the rear pipes using the previously placed exhaust clamps. Then, fit (1) 2.5" exhaust clamp and (1) exhaust tip to each exit pipe. Loosely secure the tips into place.

Adjust the exhaust for best fit, then tighten all exhaust clamps to 45 ft. lbs.

Installation is now complete.