

Key To Components

- A. 1 ea. Grille
- B. Wiring harness

Tools required

- Ratchet
- 10mm Socket
- Plastic clip removal tool or similar tool

A



B



Please take a few minutes to read and thoroughly familiarize yourself with the installation procedures outlined in this manual. Following the steps as outlined will save you time and help reduce mistakes. Once the instructions are reviewed, if you feel that you are not capable of safely installing the parts seek the help of a qualified installation expert to help you complete the job. The manufacture is in no way responsible for any personal injury or vehicle damage that may occur during the installation.

NOTES ON INSTALLATION

Please read and understand all instructions prior to beginning the installation process.

Pre-fit all panels as you proceed with the installation before attempting to bolt into position. This will enable you to understand exactly how the part is intended to fit onto vehicle.

Do NOT over-tighten screw.

If the instructions call for you to save and re-install parts set them aside in a protected area so as not to damage them.

REMOVING FACTORY GRILLE

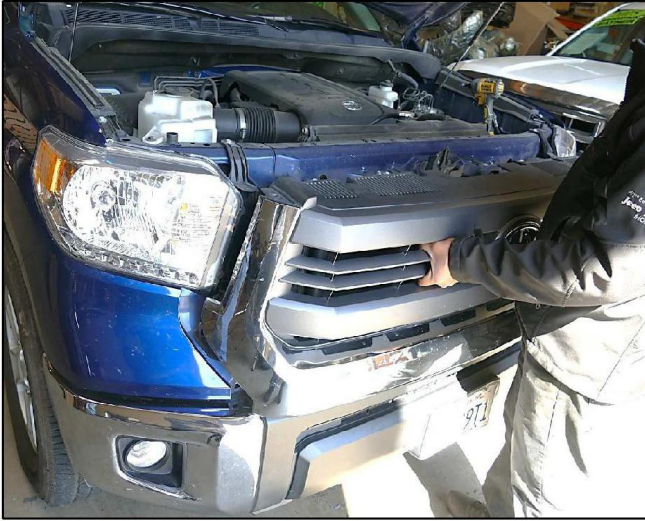


Step 1
Open vehicles hood. Using a 10mm socket locate and remove 4 bolts circled above. Set hardware aside for reinstallation.



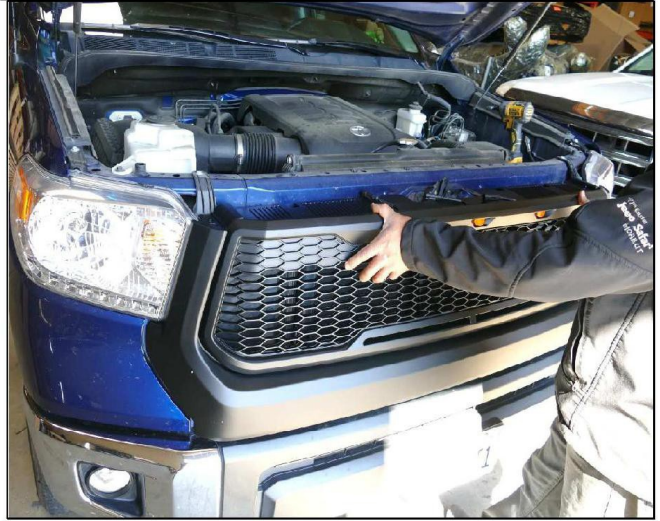
Step 2
Using a plastic clip removal tool or similar tool remove 2 factory clips circled above.

REMOVING FACTORY GRILLE CONTINUED



Step 3
Firmly grab and pull factory grille off vehicle.
Discard factory grille.

INSTALLING NEW GRILLE



Step 1
Install grille onto vehicle by reversing steps 1-2 in
the removal process.



This completes the installation.

ELECTRICAL INSTALLATION (LED GRILLE ONLY)

Proceed to make electrical connections for the LED lights. If you are not qualified to make the proper connections, we highly recommend that you contact an installation expert to complete the connections.

