



CATBACK DUAL EXHAUST SYSTEM

(2009-2021 TUNDRA)

INSTALLATION INSTRUCTIONS

CONTENTS

- (1) LH Front Pipe
- (1) RH Front Pipe
- (1) Muffler
- (1) LH Over Axle Pipe
- (1) RH Over Axle Pipe
- (1) LH Rear Pipe
- (1) RH Rear Pipe
- (2) Side Exit Pipes
- (2) Rear Exit Pipes
- (2) Exhaust Tips
- (10) 2.5" Exhaust Clamps
- (1) LH Hanger Clamp
- (1) RH Hanger Clamp
- (1) Hanger Bracket
- (1) Hanger Isolator
- (1) Hex Bolt
- (1) Lock Washer
- (2) Flat Washers
- (1) Hex Nut
- (1) Square Washer
- (4) Star Washers

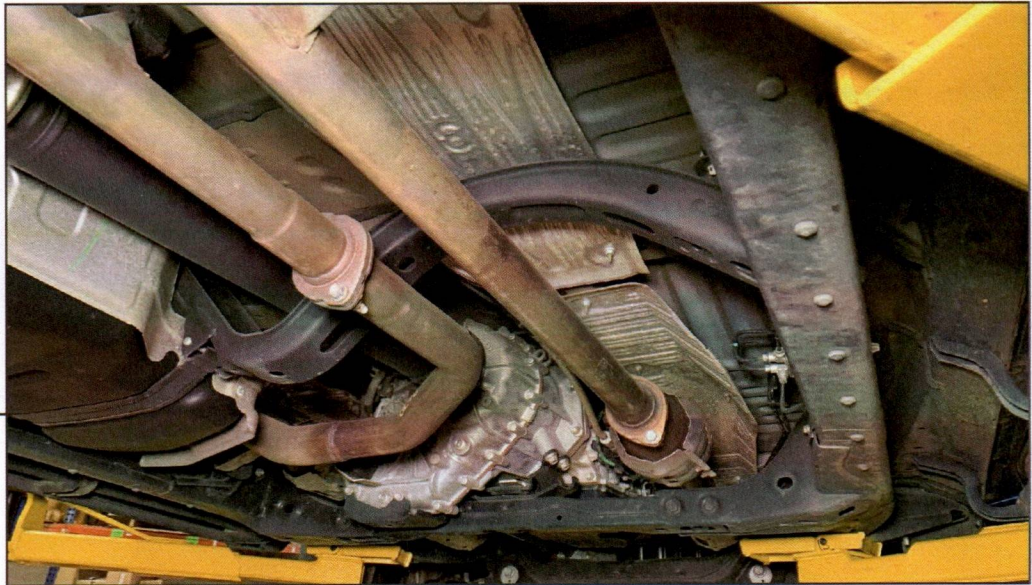
TOOLS REQUIRED

- 14mm, 15mm Sockets
- Ratchet
- Spray Lubricant
- Floor Jack
- Jack Stands

SKU # TU52626



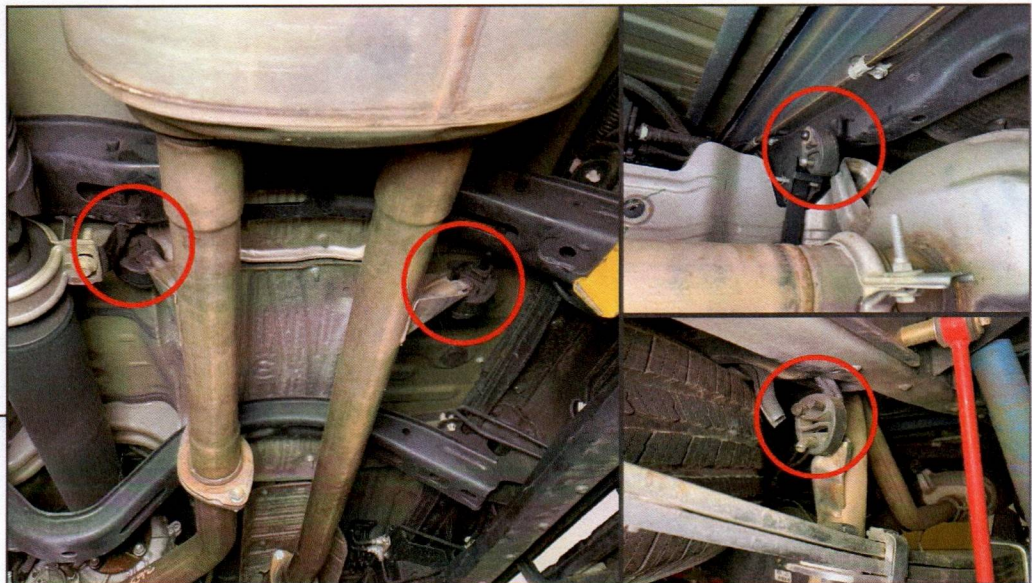
STEP 1



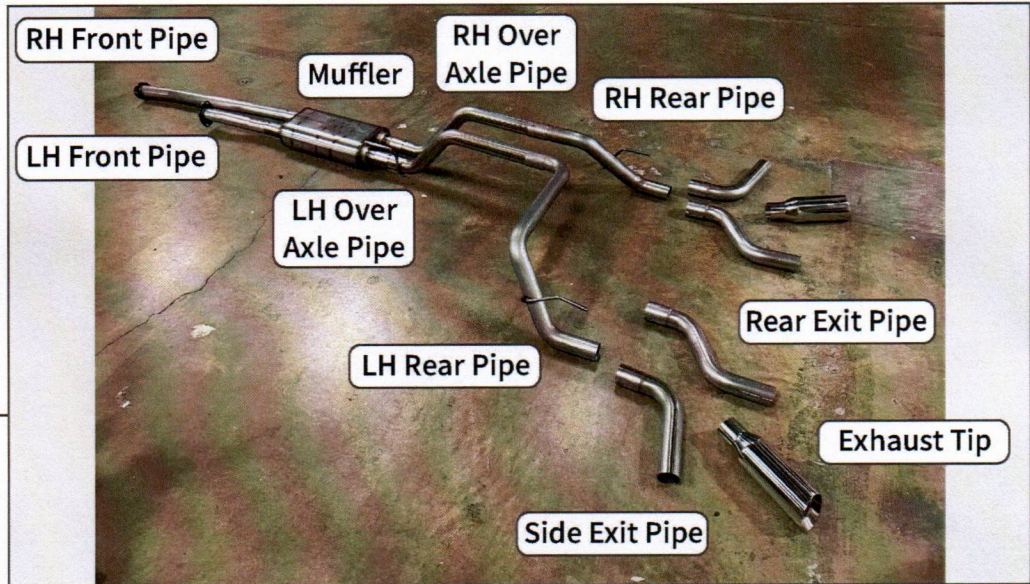
Lift and support the vehicle using a floor jack and jack stands. Locate the LH and RH side exhaust flanges. Remove the (2) 14mm bolts from each exhaust flange. Ensure the gaskets remain on the flange during removal.

Note: OEM hardware and gaskets will be reused.

STEP 2



Remove the various rubber exhaust hangers from the original exhaust system. Remove the original exhaust system from the vehicle.



STEP 3

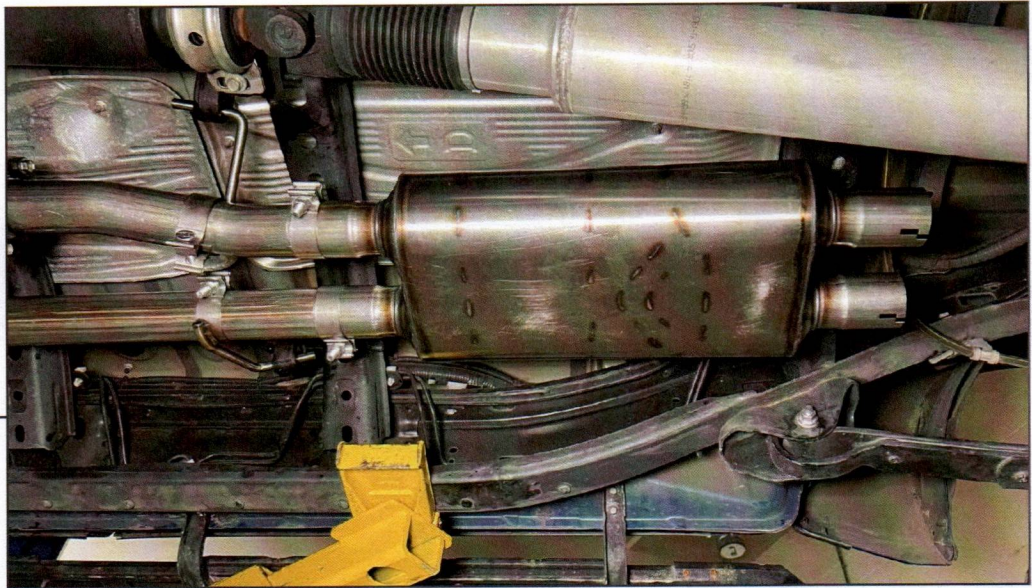
Lay out and identify all exhaust components.



STEP 4

Ensure the original exhaust flange gaskets are in place. Install the front pipes to the vehicle exhaust using the (2) original 14mm bolts per flange. Place the (2) hanger clamps to the front pipes and insert the hanger into the vehicle rubber isolators.

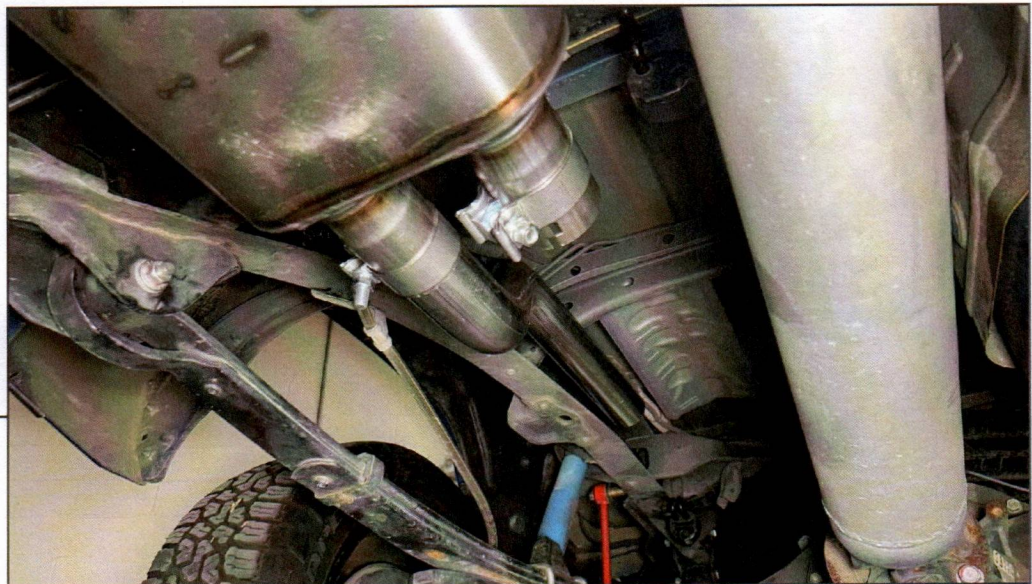
Place (1) 2.5" exhaust clamp on the end of each front pipe to prepare for the muffler installation.



STEP 5

Fit the muffler to the front pipes, and loosely secure using the previously placed (2) 2.5" exhaust clamps.

Place (2) 2.5" exhaust clamps onto the outlet of the muffler to prepare for the over axle pipes.



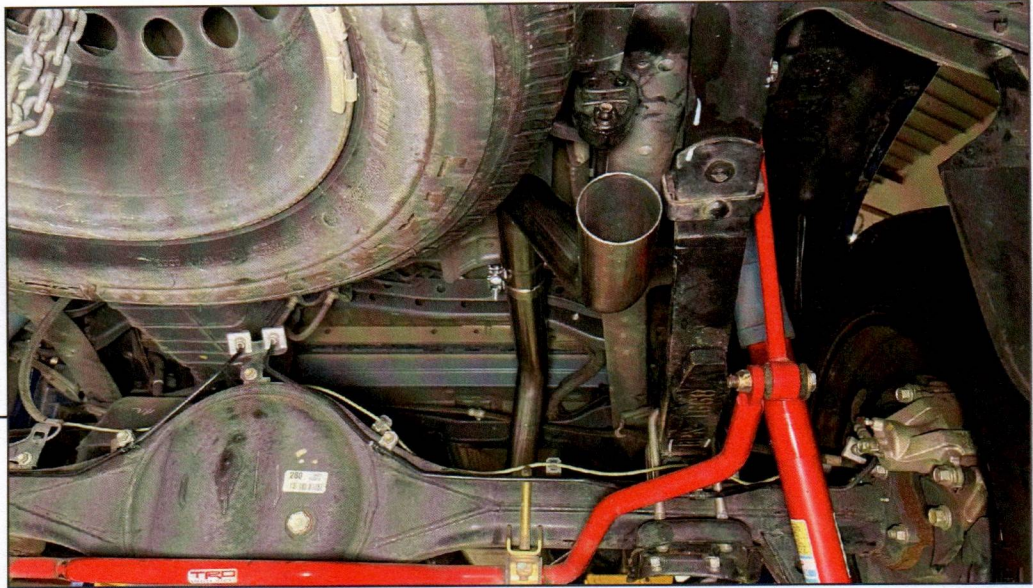
STEP 6

Fit the RH over axle pipe into the muffler, and loosely secure using the previously placed 2.5" exhaust clamp.

Place (1) 2.5" exhaust clamp onto the outlet of the RH over axle pipe to prepare for the RH rear pipe.



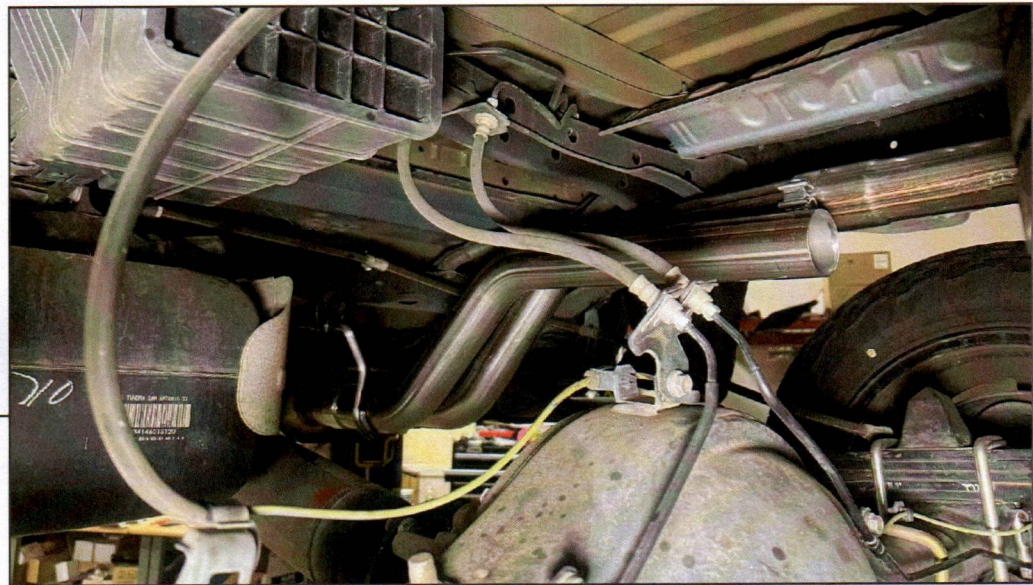
STEP 7



Fit the RH rear pipe to the vehicle rubber isolator, and fit the rear pipe into the RH over axle pipe. Loosely secure into place using the previously placed exhaust clamp.

Place (1) 2.5" exhaust clamp onto the outlet of the RH rear pipe to prepare for the exit pipe.

STEP 8



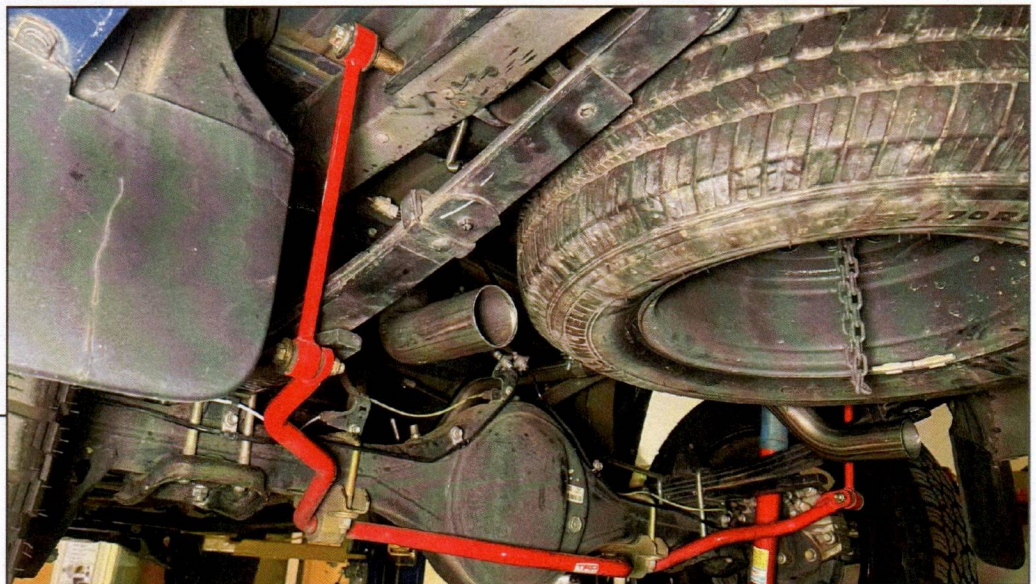
Fit the RH over axle pipe into the vehicle rubber isolator, and fit the LH over axle pipe into the muffler and loosely secure using the previously placed 2.5" exhaust clamp.

Place (1) 2.5" exhaust clamp onto the outlet of the LH over axle pipe to prepare for the LH rear pipe.



STEP 9

Locate the vehicle spare tire crossmember in the vehicle frame. Using the included hardware, secure the hanger bracket to the crossmember. Do not fully tighten the bracket to allow for exhaust adjustments later. The bracket will be tightened later.



STEP 10

Fit the LH rear pipe to the previously installed hanger bracket using the included isolator, and fit the rear pipe into the LH over axle pipe. Loosely secure into place using the previously placed exhaust clamp.

Place (1) 2.5" exhaust clamp onto the outlet of the LH rear pipe to prepare for the exit pipe.



STEP 11

Depending on the desired exhaust outlet, fit the corresponding outlet pipe to the rear pipes using the previously placed exhaust clamps. Then, fit the exhaust tips to the exit pipes and secure using (2) 2.5" exhaust clamps.

Tighten the hanger bracket to the vehicle crossmember. Adjust the exhaust to best fit the vehicle. Tighten all exhaust clamps to 45 ft. lbs.

Installation is now complete.