

# **INSTALLATION INSTRUCTIONS**

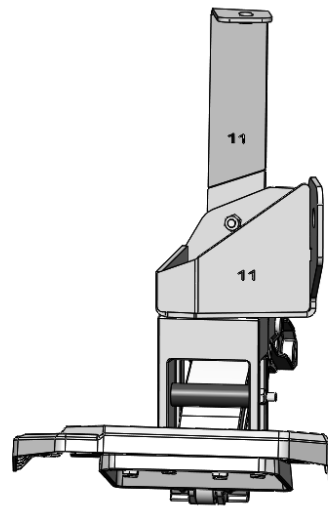
**Manual Corner Step / 22+ Tundra**

TU52240

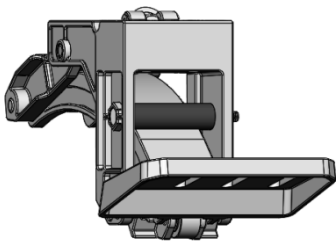
## INSTALLATION INSTRUCTIONS

### PARTS LIST:

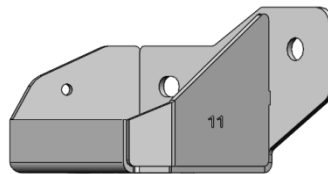
Item	Quantity
Linkage arm assembly	1
Step pad	1
Frame mounting bracket	1
Support bracket	1
8-1.25mm x 20mm T-Bolt	4
8mm Nylon Lock Nuts	4
8mm x 24mm x 2mm Flat washers	6
8-1.25mm x 25mm Combo bolts	3
8mm Lock washer	2
8-1.25mm x 20mm Hex Bolt	1
8-1.25mm x 30mm Hex Bolt	1



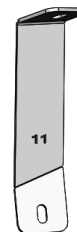
Linkage Arm Assembly



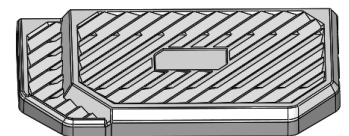
Frame mounting bracket



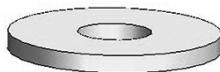
Support Bracket



Step Pad



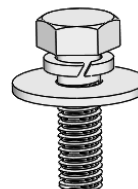
Lock Washer



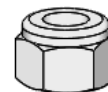
Flat Washer



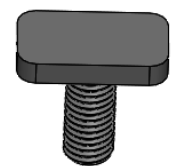
Hex Bolt



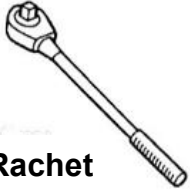
Combo Bolt



Lock Nut



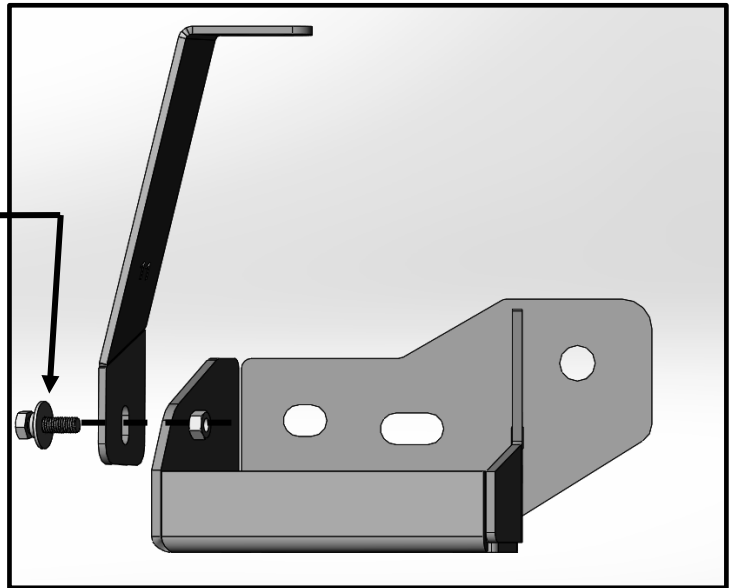
T-Bolt

**TOOLS REQUIRED****Ratchet****13mm Socket****Extensions****Wrench****1**

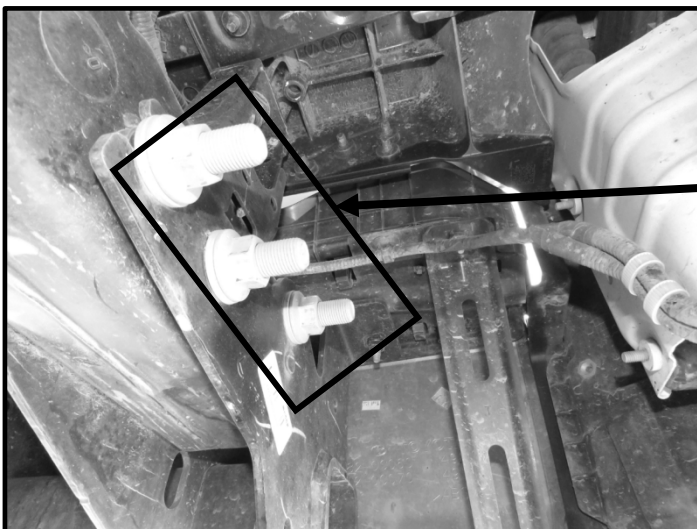
Follow (Fig 1) to combine the mounting bracket to the support bracket. **Do not fully tighten hardware at this time.**

**(Fig 1) Combine the support bracket to the frame mounting bracket**

**(1) 8mm Combo Bolts**

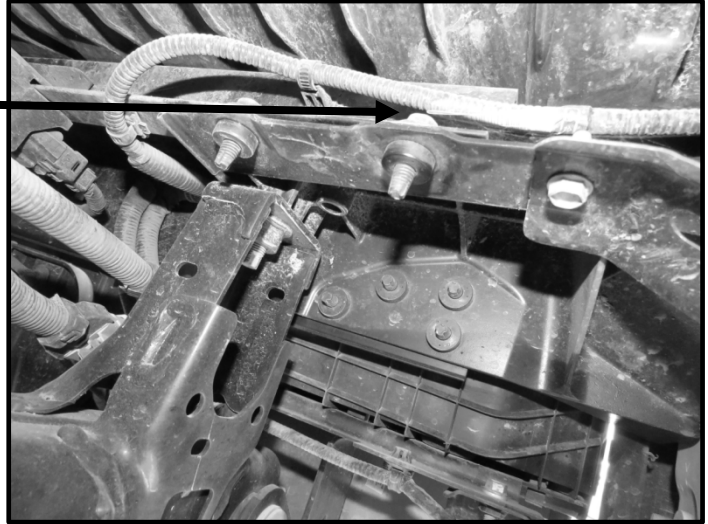
**2**

Follow (Fig 2 – 5) to install the mounting bracket & support bracket to the frame of the vehicle.



**(Fig 2) Starting at the rear DS remove the (3) OEM 21mm hex nuts**

**(Fig 3) Remove the hex bolt located underneath the bed**



**(Fig 4) Mount the combined brackets to the vehicle**

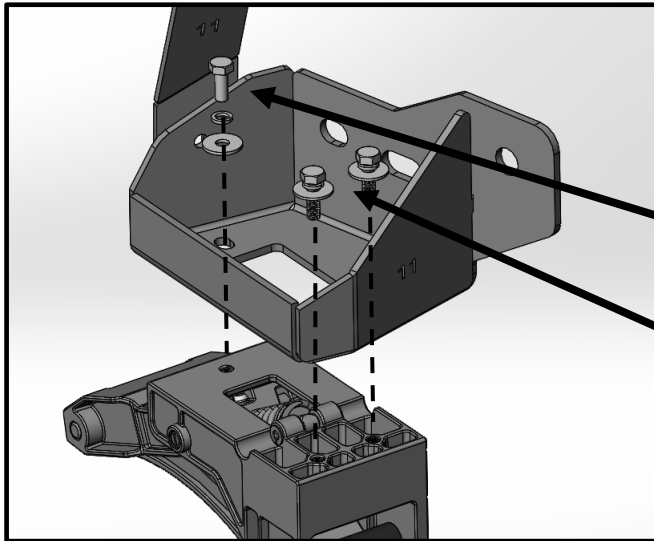


**(Fig 5) Mounted support bracket**

**(1)8mm hex bolt  
(1)8mm lock washer  
(1)8mm flat washer**



Follow (Fig 6-9) to install the rest of the linkage arm assembly to the mounting bracket. Once finished, **Tighten all hardware at this time to the preferred position.** Do periodic inspections to the installation to make sure that all hardware is secure and tight.

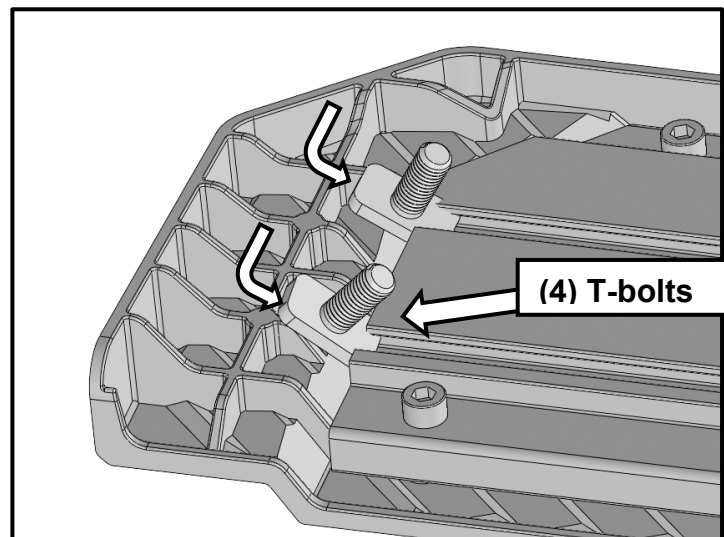


**(Fig 6) Mount the frame & support bracket to the linkage arm assembly**

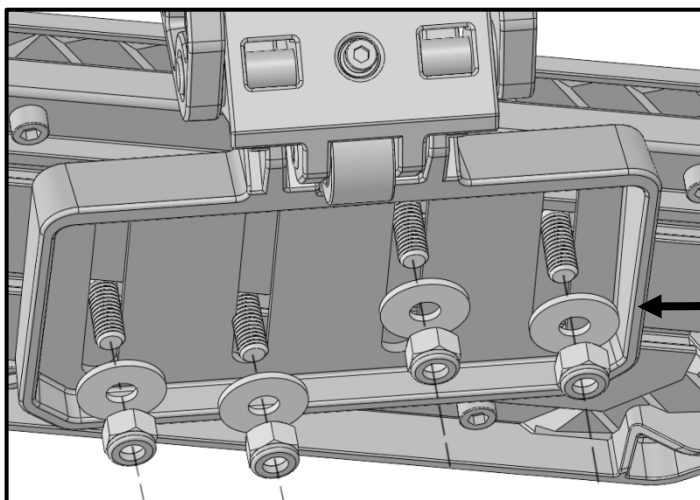
(1) 8mm x 20mm Hex Bolt  
(1) 8mm Lock Washer  
(1) 8mm Flat Washer

(2) 8mm Combo Bolts

**(Fig 7) Slide in T-bolts through open ends of the channels underside of Step Pad (two T-bolts per channel)**



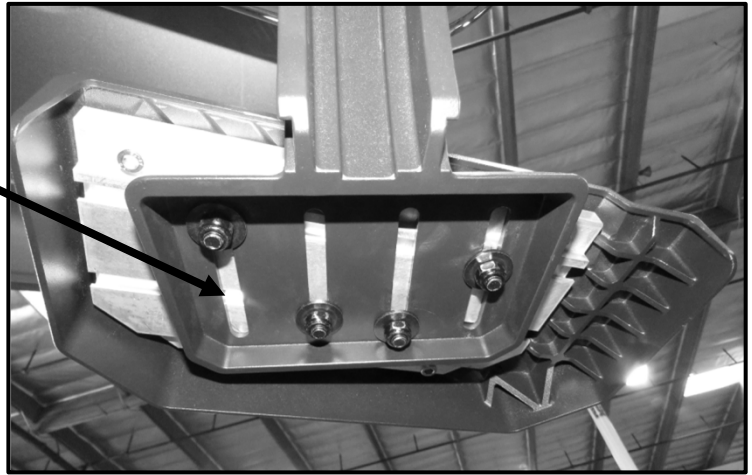
(4) T-bolts



**(Fig 8) Attach Step Pad to Corner Step Base**

(4) 8mm Flat Washers  
(4) 8mm Nylon Lock Nuts

(Fig 9) The step pad can be adjusted to the user liking



**Note:** Excess dirt & debris may prevent from functioning properly. Simply clean the dirt off with after periodically to maintain optimal condition of corner step.

**Complete Installation**

