



# IN-CHANNEL WINDOW DEFLECTORS

---

## INSTALLATION INSTRUCTIONS

### CONTENTS

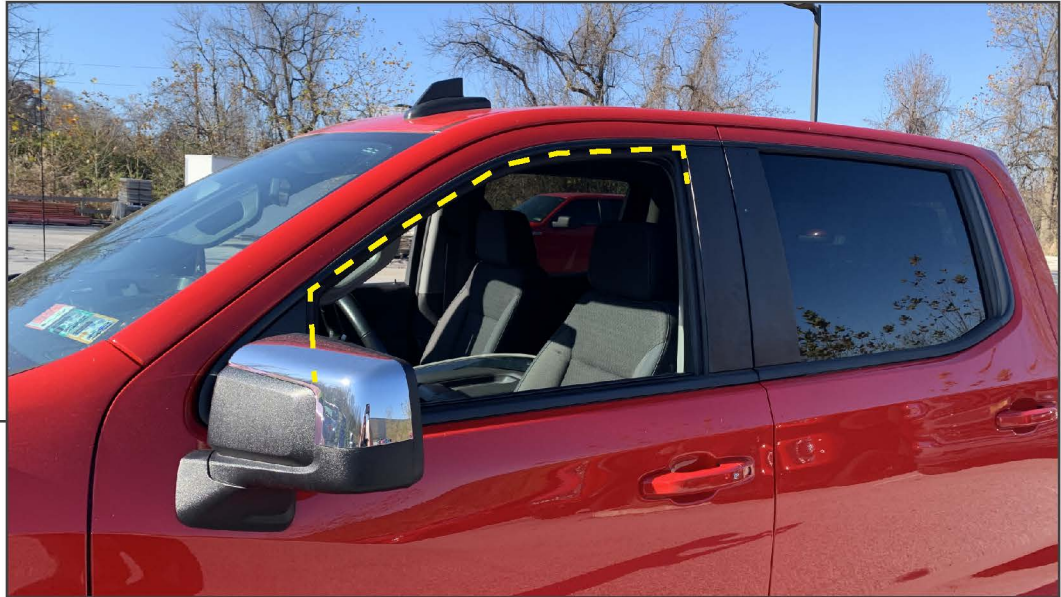
---

(1) Window Deflector Set

### TOOLS REQUIRED

---

Isopropyl Alcohol  
Microfiber Cloth



---

## STEP 1

Lower the vehicle window. Clean the top of the inner window seal using isopropyl alcohol and a microfiber cloth.

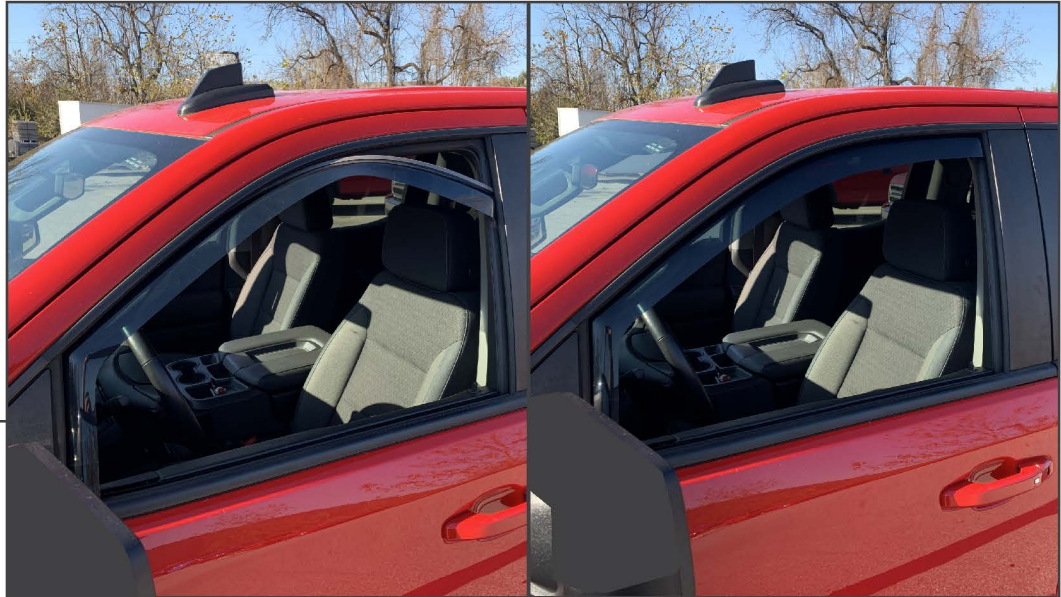


---

## STEP 2

With the window seal cleaned, peel the red tape backing from the appropriate window deflector.

## STEP 3



Fit the front portion of the window deflector into the window channel, and then fit the rear portion into the rear of the window channel. The window deflector is flexible and can be manipulated to allow proper fitment.

## STEP 4



With the window deflector into place, carefully raise the window fully to fully seat the double sided tape to the window seal. Pulling the deflector outwards may be necessary to allow the window to raise properly initially.

It is recommended to allow the deflector tape adhere for 24 hours with the window raised.



---

## STEP 5

Repeat steps 1-4 for all remaining window deflectors.

Note: Vehicles with Auto Up/Down power windows may malfunction (only raise part way) due to the window visor seating inside of the window channel/track. If the vehicle system will not automatically raise the window entirely, manually raise the window with the switch.

Installation is now complete.