

5-LED GRILLE LIGHT

(2014-2021 TUNDRA)

INSTALLATION INSTRUCTIONS

CONTENTS

(1) LED Light Assembly
(1) Wiring Harness
(5) Cable Ties
(1) Ring Terminal Connector
(1) Fuse Tap

TOOLS REQUIRED

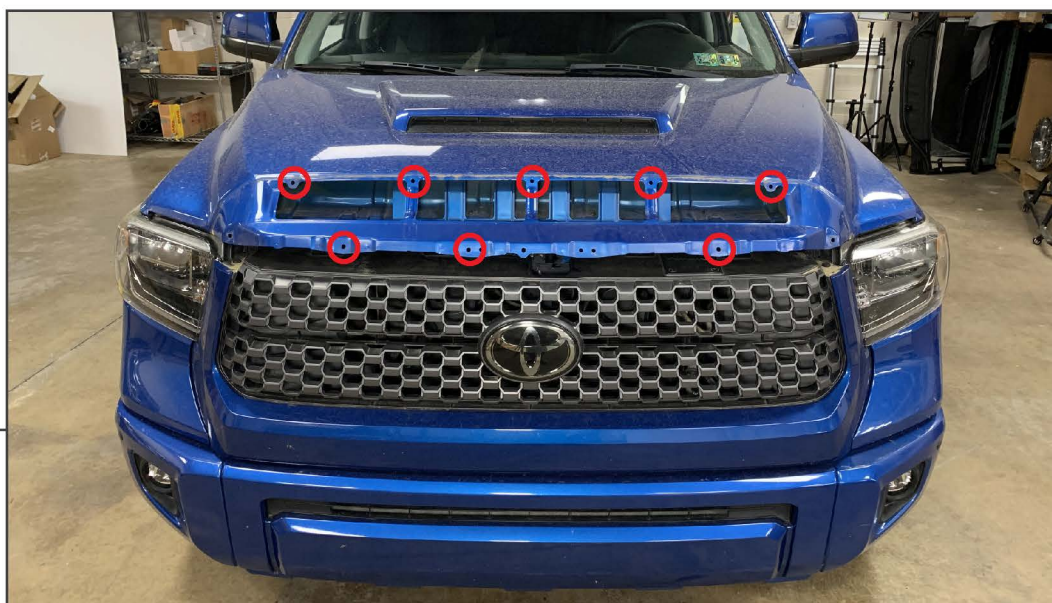
10mm Socket
Ratchet
Plastic Panel Trim Tool
Phillips Screwdriver
Drill and Drill Bits

STEP 1



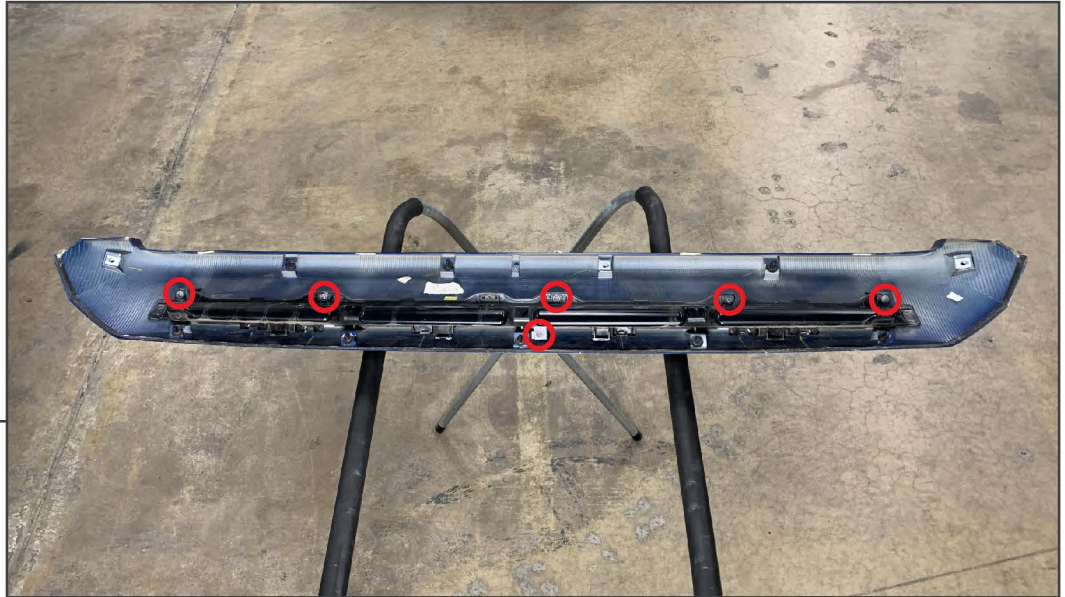
Open the vehicle hood, and locate the hood mounted panel. Remove (3) 10mm bolts from the hood mounted panel.

STEP 2



Gently lower the hood to allow the safety latch to hold the hood downwards. Firmly pull the hood mounted panel away from the vehicle to dislodge the retaining clips. Using a plastic trim panel tool may be necessary for additional leverage. Place the panel on a soft surface for disassembly.

STEP 3



Remove (6) Phillips head screws from the hood mounted panel to remove the panel insert.
Remove the panel insert and set aside.

STEP 4



Fit the new LED light assembly onto the Phillips screw posts.

STEP 5



Use a flathead screwdriver and dislodge the mesh from the panel insert perimeter, and use a drill and drill bit to remove the (1) plastic rivet. Remove the mesh insert from the panel.

STEP 6



Using a drill and drill bit, drill a hole in the panel insert to route the included wiring harness through from the lights to the inside of the hood.

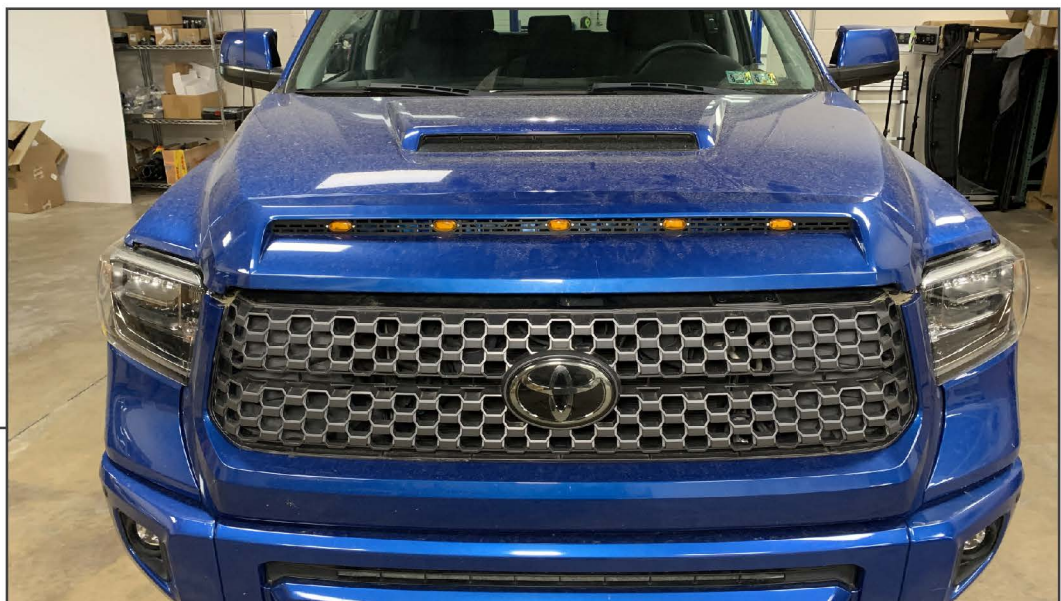
Plug in each LED light into the wiring harness, then route the harness through the panel insert. Install the panel insert to the vehicle hood panel over top of the LED light panel and secure into place using the original (6) Phillips head screws. Do not over-tighten the screws.

STEP 7



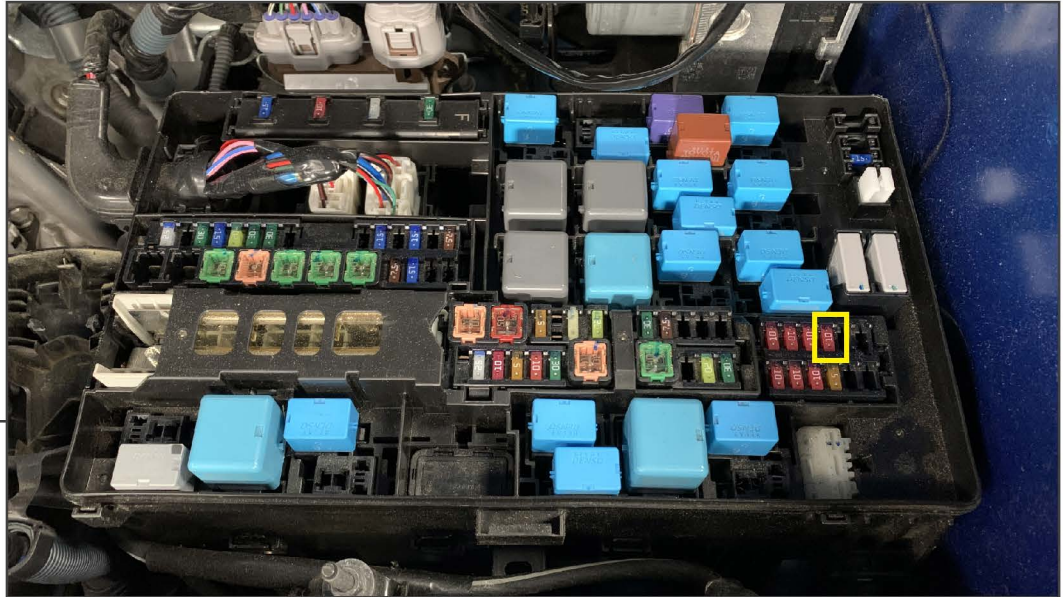
Route the wiring harness through the hood, and have the harness exit through the pre-drilled hole next to the hood strut on the driver's side of the vehicle. Neatly route the harness towards the vehicle fuse box and battery.

STEP 8



Place the hood panel to the vehicle, and ensure the panel clips into place. Secure the panel to the vehicle using the original (3) 10mm bolts.

Note: Ensure the wiring harness is away from the panel mounting points to prevent harness damage.



STEP 9

Connect the (1) fuse tap to the Red wire lead. Connect the fuse tap to the vehicle ignition fuse in the fuse box, and route the wiring out of the fuse box. Then, connect the ring terminal to the Black wire lead. Fit the wire lead to the vehicle battery/chassis ground. Route the harness neatly using the included (5) cable ties.

The lighting will power on with the vehicle ignition key in the ON position.



STEP 10

Installation is now complete.