



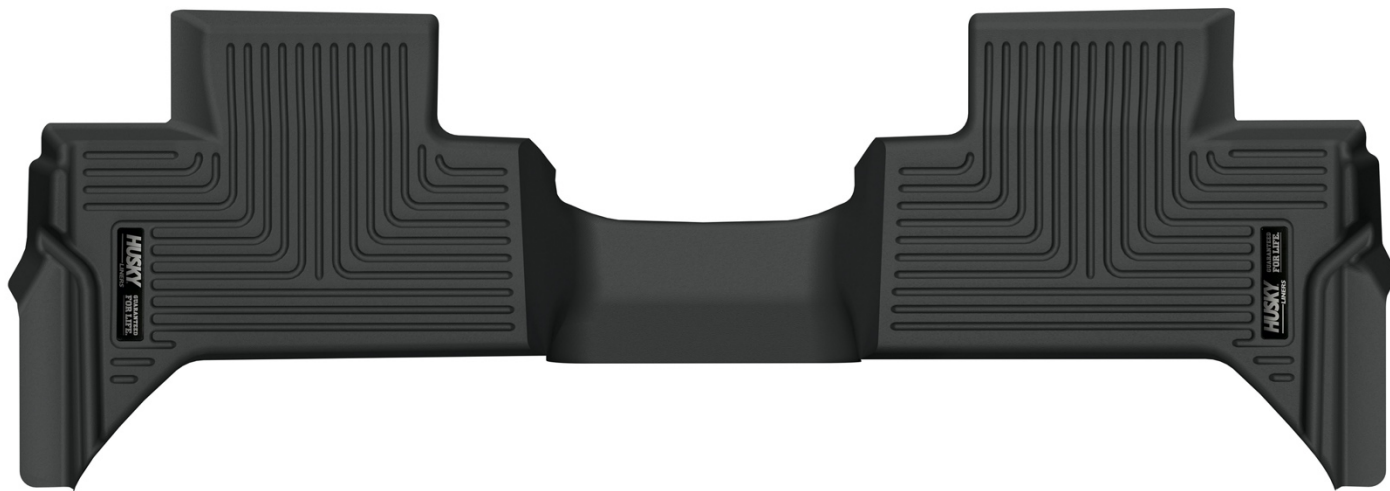
X-ACT CONTOUR® FLOOR LINERS

PT #5393

CARE AND USE INSTRUCTIONS

Thank you for selecting an X-act Contour® Floor Liners from Husky Liners Inc. Your new liner is custom molded to fit your specific vehicle's floor board. The liner is made to take the place of your factory floor mat. For correct fit, it is necessary to remove the factory floor mat before installing your new floor liner. However, do not remove the factory-installed carpeting.

Your liner is made from an engineering resin that is lightweight and extremely tough and durable. The easiest way to clean your liner is with a damp cloth or sponge and soap and water. Windex®, 409® and ArmorAll® type cleaners work as well.



TO EASE INSTALLATION OF YOUR NEW LINER, MOVE BOTH FRONT SEATS TO THE MOST FORWARD POSITION. WITH THIS DONE, INSTALL THE LINER AS SHOWN ABOVE. ONCE YOU HAVE INSTALLED YOUR LINER, REPOSITION THE SEATS AS DESIRED.



X-ACT CONTOUR® FLOOR LINERS

PT #53938

CARE AND USE INSTRUCTIONS

Thank you for selecting an X-act Contour® Floor Liners from Husky Liners Inc. Your new liners are custom molded to fit your specific vehicle's floor board. The liners are made to take the place of your factory floor mats. ***For correct fit, it is necessary to remove the factory floor mats before installing your new floor liners. However, do not remove the factory-installed carpeting.***

Your liners are made from an engineering resin that is lightweight and extremely tough and durable. The easiest way to clean your liner is with a damp cloth or sponge and soap and water. Windex®, 409® and ArmorAll® type cleaners work as well.



LEFT OR DRIVER'S



RIGHT OR PASSENGER'S

TO EASE INSTALLATION OF YOUR NEW FRONT LINERS, MOVE BOTH FRONT SEATS TO THE MOST REARWARD POSITION. WITH THIS DONE, INSTALL LINERS AS SHOWN IN THE IMAGES ABOVE. THE DRIVER AND PASSENGER SIDE LINER WILL ATTACH TO THE FACTORY FLOOR MAT TWIST LOCKS. LOCATED IN THE FACTORY CARPETING. ONCE YOU HAVE INSTALLED YOUR LINERS, REPOSITION THE SEATS AS DESIRED.



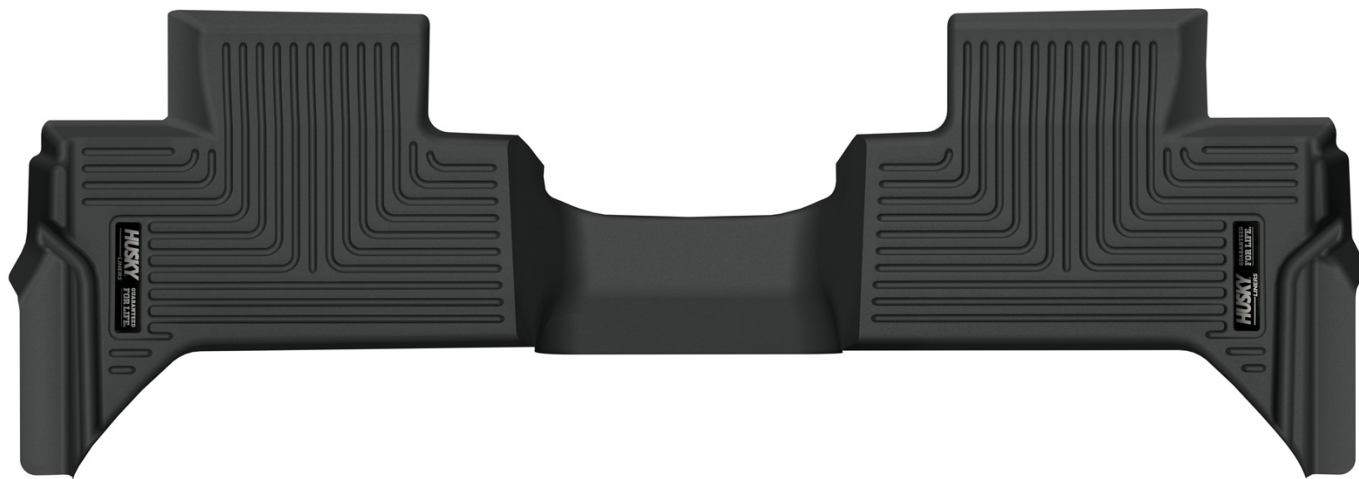
X-ACT CONTOUR® FLOOR LINERS

PT #53938

CARE AND USE INSTRUCTIONS

Thank you for selecting an X-act Contour® Floor Liners from Husky Liners Inc. Your new liner is custom molded to fit your specific vehicle's floor board. The liner is made to take the place of your factory floor mat. For correct fit, it is necessary to remove the factory floor mat before installing your new floor liner. However, do not remove the factory-installed carpeting.

Your liner is made from an engineering resin that is lightweight and extremely tough and durable. The easiest way to clean your liner is with a damp cloth or sponge and soap and water. Windex®, 409® and ArmorAll® type cleaners work as well.



TO EASE INSTALLATION OF YOUR NEW LINER, MOVE BOTH FRONT SEATS TO THE MOST FORWARD POSITION. WITH THIS DONE, INSTALL THE LINER AS SHOWN ABOVE. ONCE YOU HAVE INSTALLED YOUR LINER, REPOSITION THE SEATS AS DESIRED.