

REDROCK

Installation Instruction
Packaged Grille
PART NUMBER:
TU24615
FITS ALL Toyota Tundra
2010-2013

Key To Components	Tools Required
A. 1 ea. Grille	10 mm socket
B. 1 ea. Wire Harness	Socket Drive
	Philip Screw Driver
	Plastic Pry Tool or Similar Tool

A



B



NOTES ON INSTALLATION

Please read and understand all instructions prior to beginning the installation process.

Pre-fit all panels as you proceed with the installation before attempting to bolt into position. This will enable you to understand exactly how the part is intended to fit onto vehicle.

Do NOT over-tighten screw.



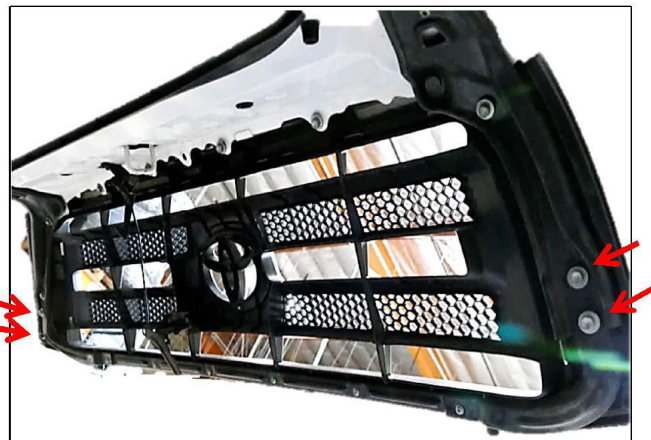
Please take a few minutes to read and thoroughly familiarize yourself with the installation procedures outlined in this manual. Following the steps as outlined will save you time and help reduce mistakes. Once the instructions are reviewed, if you feel that you are not capable of safely installing the parts seek the help of a qualified installation expert to help you complete the job. The manufacture is in no way responsible for any personal injury or vehicle damage that may occur during the installation process.

REMOVING FACTORY GRILLE

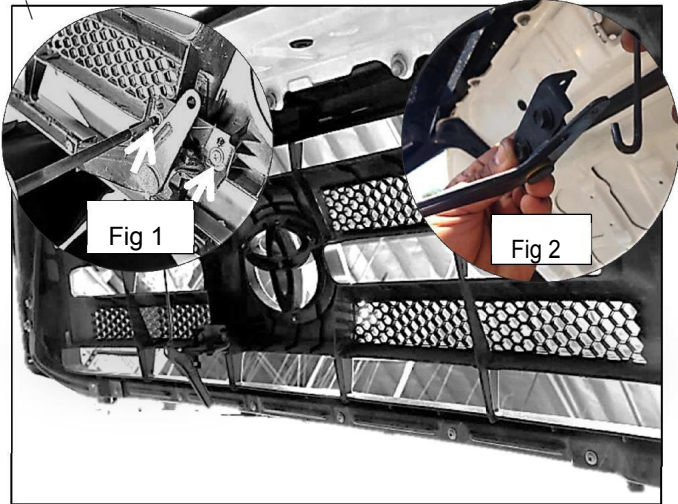
To protect vehicles paint while installing new grill it is recommended to add masking tape onto the top edge of grill as shown in step 4 before removing factory grille.



Step 1
Open the vehicles hood. From behind the factory grille shell locate the six factory bolts on the top holding the factory grille to vehicles hood. Using a 10mm socket remove all 6 factory bolts, set hardware aside for later use.



Step 2
Using a 10mm socket locate and remove 2 factory bolts on each side of the factory grille as shown above. Set hardware for reinstallation.

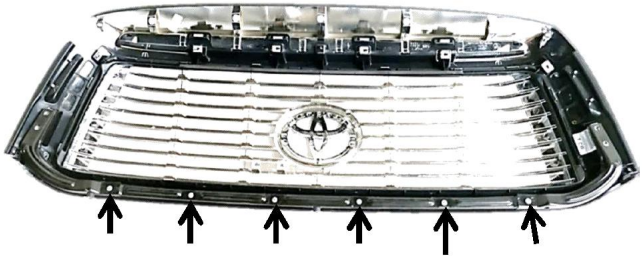


Step 3
 Using #2 Phillip screws driver remove two factory screws Fig1 holding hood latch to vehicle. Set hood latch aside for later use. Detach the hood latch cable from hood latch Fig 2. Set hood latch aside for reinstallation.



Step 4
 Close the hood on the vehicle. Insert Plastic Pry Tool or similar tool between the vehicles hood and grill gap. There will be 7 locations were the grill is attach with plastic clips. Apply pressure outwards all throughout the 7 location until grill is detached from vehicles hood. You will hear a clicking sound as the clips are released. Remove factory grille from vehicle.

REMOVING FACTORY GRILLE



Step 5 Working on work bench. Using a #2 Phillip head screw driver remove 6 factory screws. Set factory grille bracket and hardware aside for later use.



Step 6
 Remove factory hood latch from factory bracket by removing 2 factory bolts shown above using a 10mm socket.



Step 7
Discard factory bracket fig 1. Set aside factory hood latch fig 2 and hardware for reinstallation.

ASSEMBLING FACTORY HOODLATCH



Step 1
Install factory hood latch onto supplied hood latch mounting bracket as shown above.



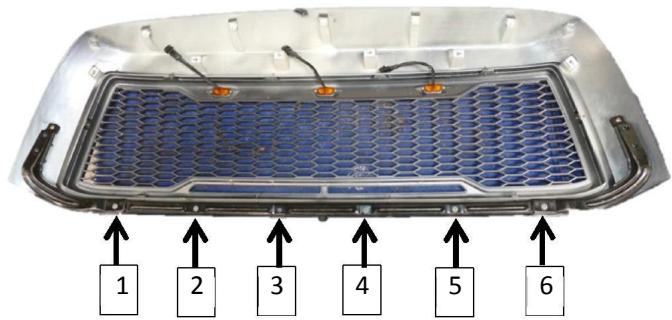
Step 2
Install factory bolts through the mounting bracket onto factory hood latch. Tighten down bolts using 10mm socket.

INSTALLING FACTORY BRACKET ONTO NEW GRILLE



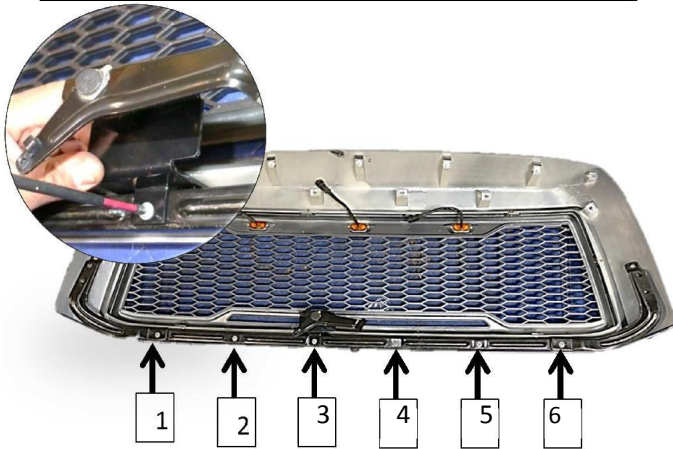
Step 1

Place factory grille bracket (removed in step 6) on to new grille (A). Factory grille bracket will go in the same position as factory grille as shown above.



Step 2

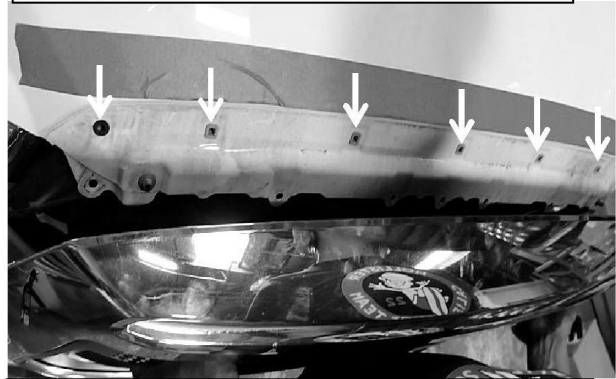
Once grille bracket is in place install factory Phillip's head screws on to position #1,2,4,5,6 as shown above *DO NOT INSTALL* Phillip's head screw on #3 position. Tighten down using #2 Phillip's head



Step 3

Install supplied hood latch bracket onto #3 position as shown. Install factory Phillip's head screw onto #3 position. Tighten down using #2 Phillip's head screw driver.

INSTALLING NEW GRILLE



Step 1

Place supplied grill (A) on to vehicle hood. Grill has 7 plastic clips that will be mounted on factory hood as shown above.



Step 2

Open vehicles hood. From behind the grille insert the 6 factory hex bolts (removed in page 1 step 1) onto all six positions. Use 10mm socket to tighten down bolts.



Step 3

Install factory bolts on each side of the grille circled above. Using a 10mm socket tighten down all hardware. Reinstall factory cable latch hook on to vehicle hood latch as shown above.

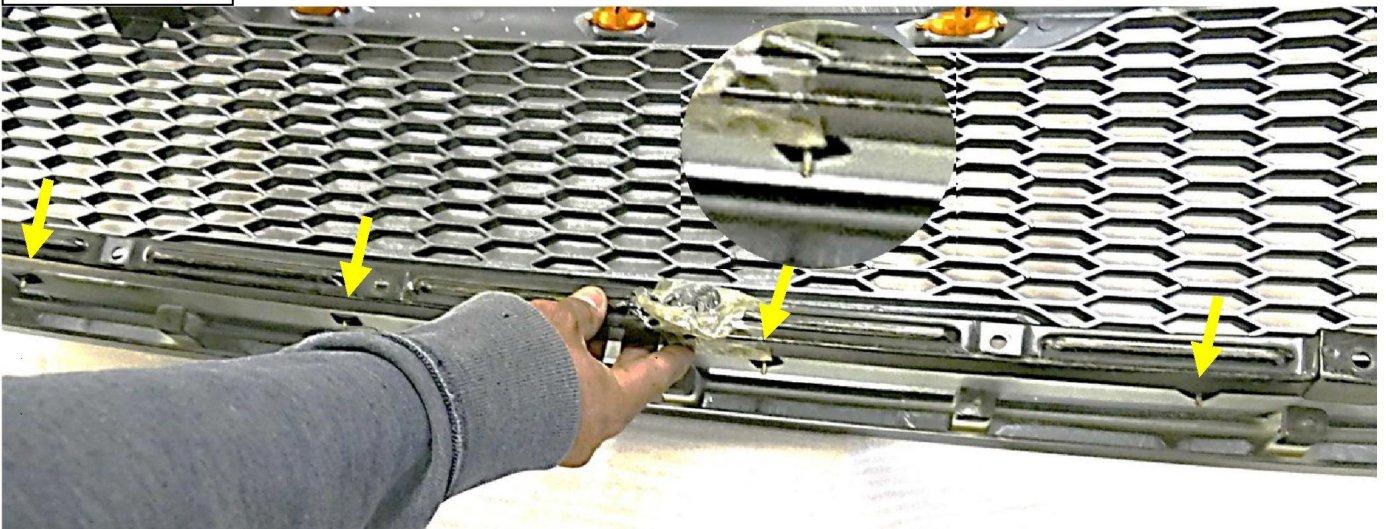


This completes the installation.

Step 4

When closing the vehicles hood, close the hood slowly and make sure the hood latch is not hitting against the bumper. If the hood latch is hitting against the bumper then simply bend the hood latch inwards towards the truck. Check clearance and repeat until satisfied.

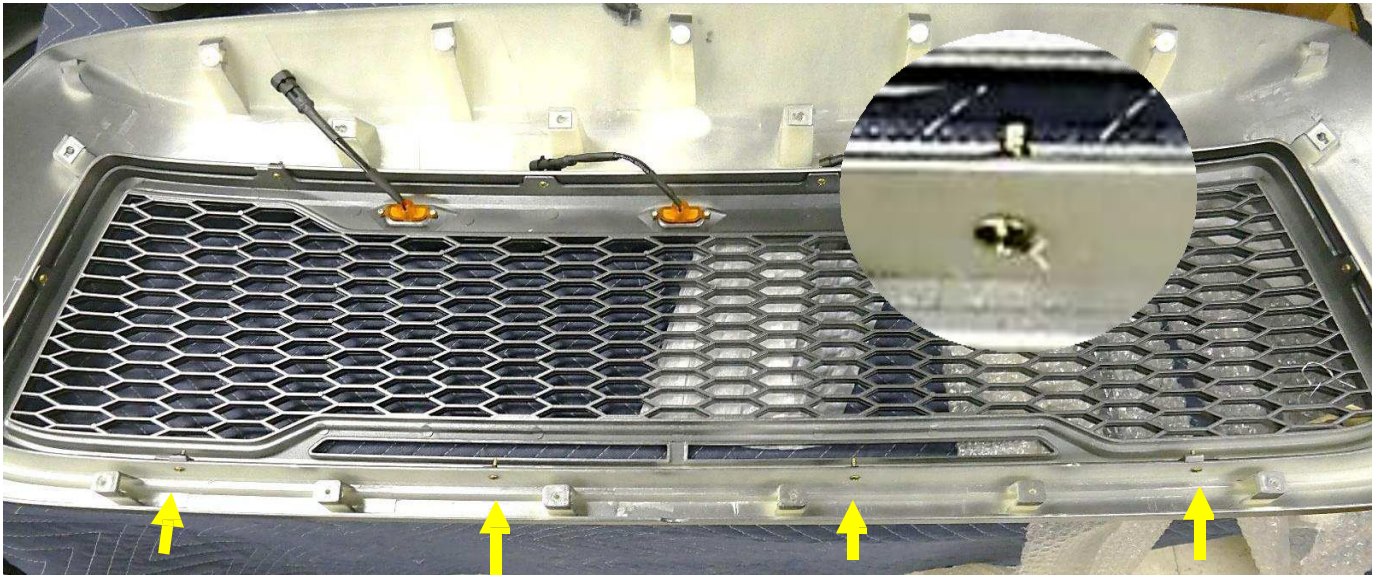
ADDENDUM



Step 1

If your particular year retaining bracket hits the grill screws shown above simply switch the screws to face the opposite direction.

ADDENDUM continued



Step 2
Switch the 4 screws shown above towards the inside of the honeycomb to avoid the interference using a #2 Phillip's head screw driver.



This completes the installation.

ELECTRICAL INSTALLATION (LED GRILLE ONLY)

Proceed to make electrical connections for the LED lights. If you are not qualified to make the proper connections, we highly recommend that you contact an installation expert to complete the connections.

