



---

# CATALYTIC CONVERTER ANTI-THEFT DEVICE AND SKID PLATE

(2007-2021 TUNDRA)

---

## INSTALLATION INSTRUCTIONS

### CONTENTS

---

- (1) Front Skid Plate Panel
- (1) Center Skid Plate Panel
- (1) Rear Skid Plate Panel
- (2) Mounting Brackets
- (8) M10x1.50 x 40mm Bolts
- (8) M10x1.50 x 20mm Bolts
- (16) M10 Lock Washers
- (16) M10 Flat Washers
- (8) M10 Nut Plates
- (6) Spacers
- (1) Security T-45 Driver Bit

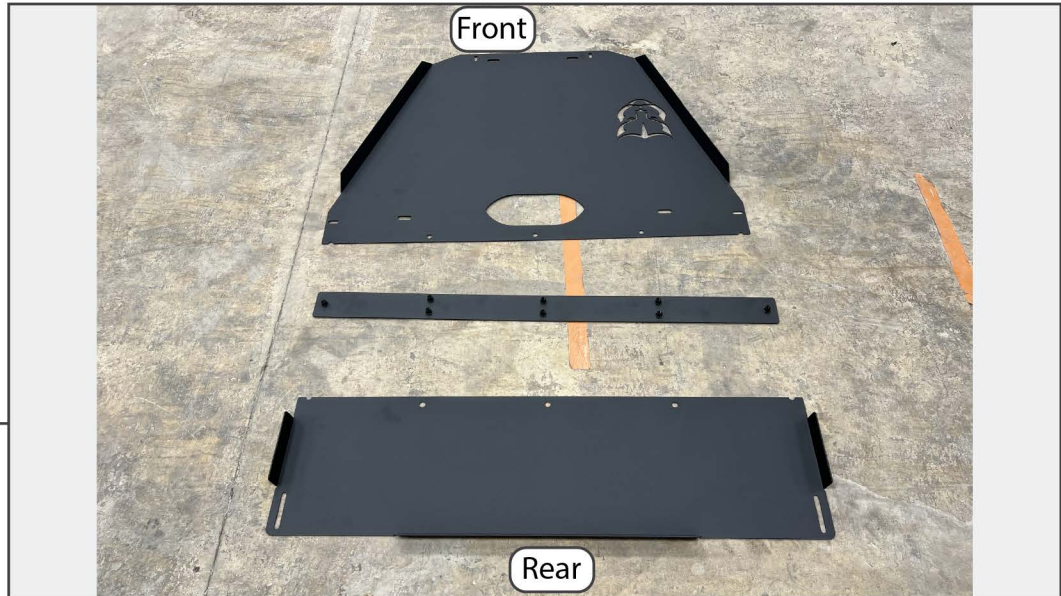
### TOOLS REQUIRED

---

- Security T-45 Driver Bit  
(Included)
- Floor Jack
- Jack Stands

SKU # TU22236

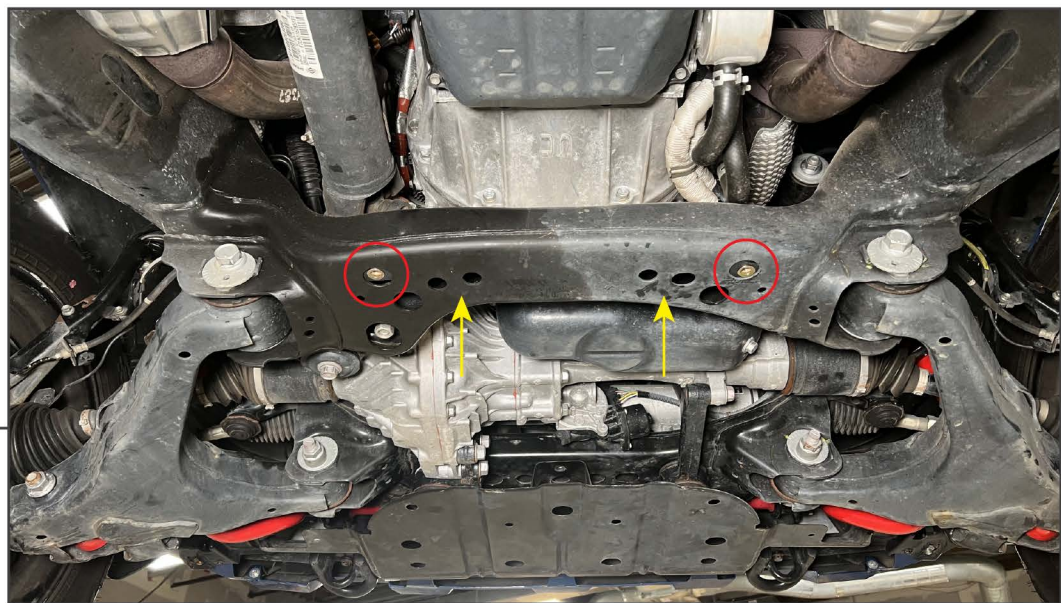
**STEP 1**



Lift and support the front of the vehicle using a floor jack and jack stands.

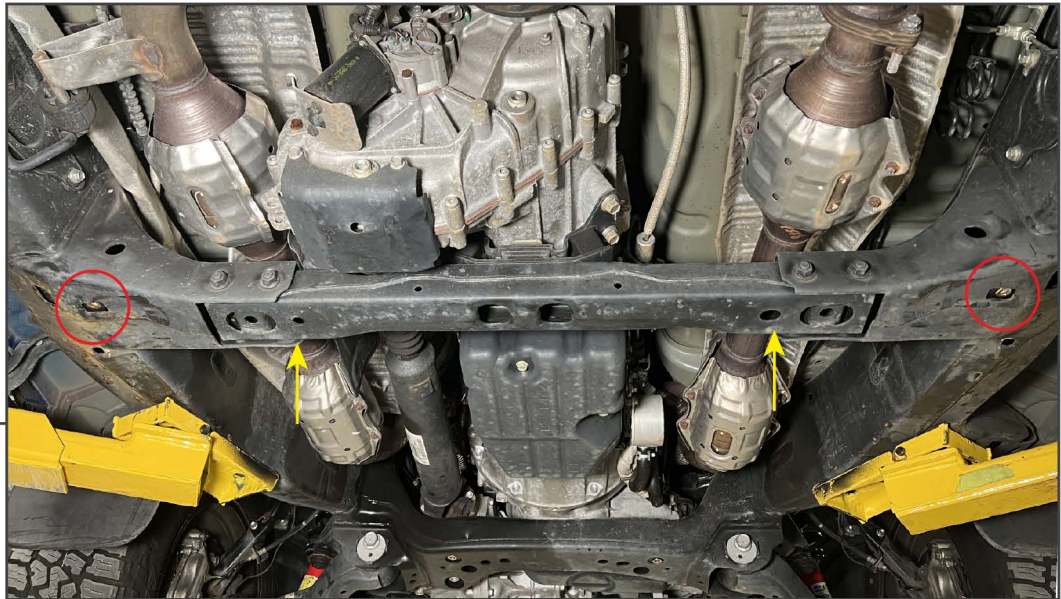
Identify the front and rear of the skid plate assembly.

**STEP 2**



From under the vehicle, insert (2) M10 nut plates into the front of the vehicle frame under the front of the transmission.

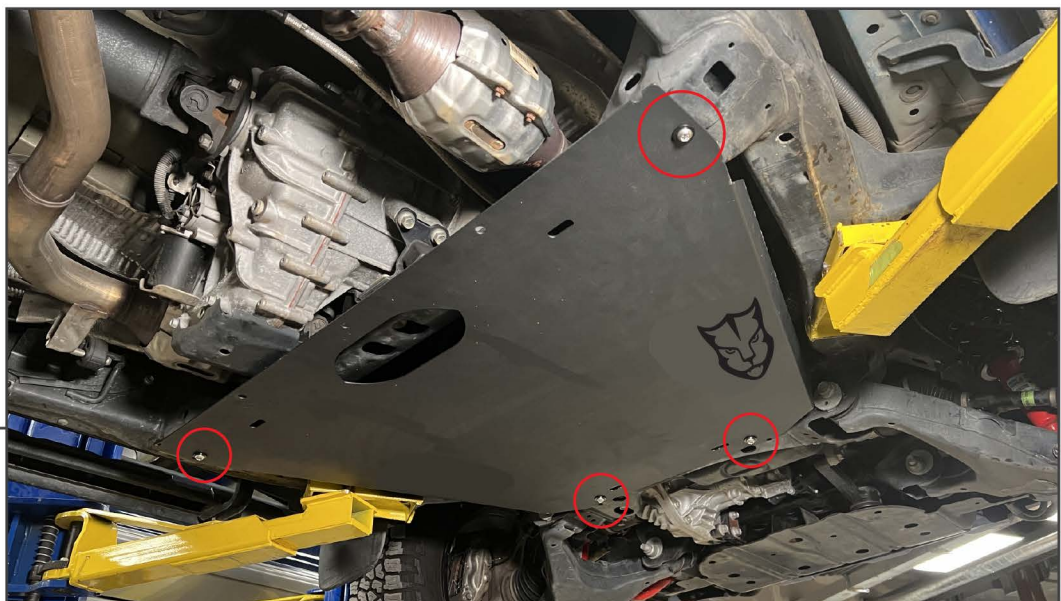
Note: Depending on the vehicle year, the nut plates may fit into different frame holes. Reference the front plate bolt hole locations comparatively to the vehicle frame.



**STEP 3**

From under the vehicle, insert (2) M10 nut plates into the rear of the vehicle frame under the rear of the transmission.

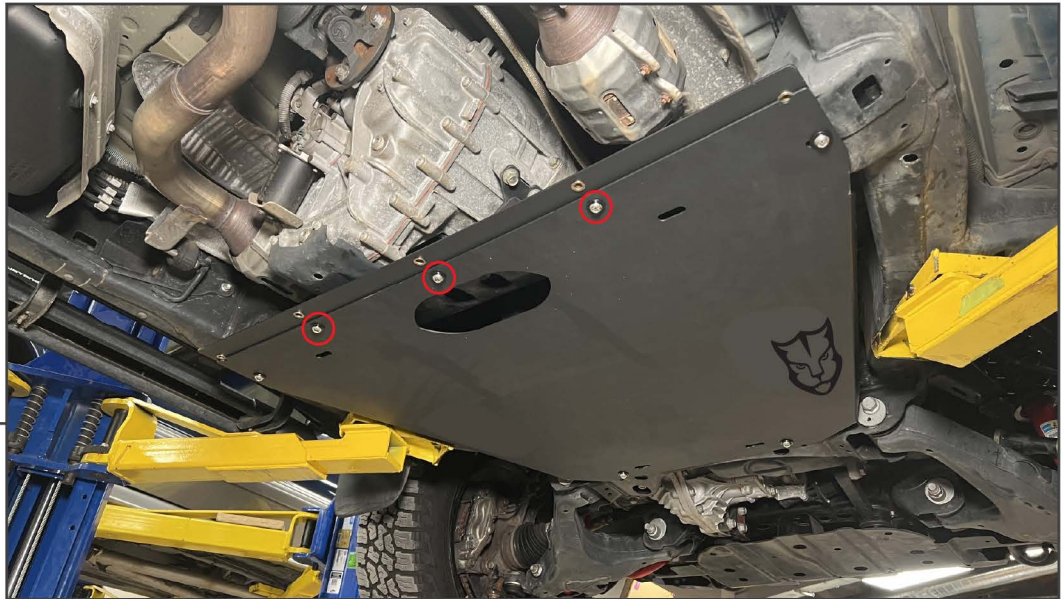
Note: Depending on the vehicle year, the nut plates may fit into different frame holes. Reference the front plate bolt hole locations comparatively to the vehicle frame.



**STEP 4**

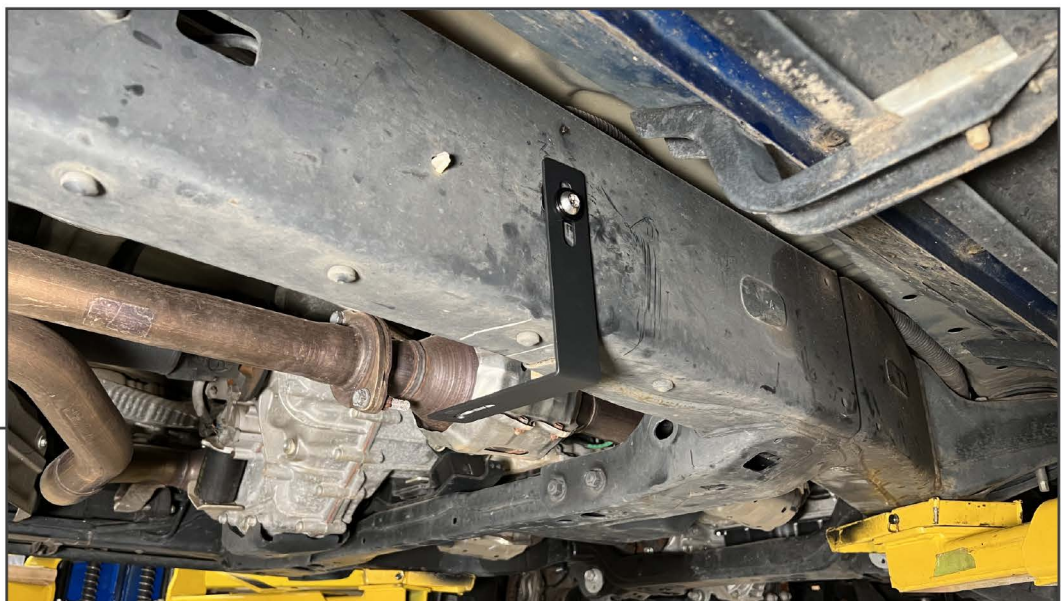
Loosely secure the front skid plate panel to the previously fitted nut plates using (4) M10 bolts, (4) M10 lock washers, (4) M10 flat washers, and (4) spacers. Ensure (1) spacer is fitted between the vehicle frame and the skid plate at each mounting point.

**STEP 5**



Secure the center skid plate panel to the front skid plate panel using (3) M10 x 20mm bolts, (3) M10 lock washers, and (3) M10 flat washers.

**STEP 6**



Fit the (2) mounting brackets to each outer rectangular hole in the vehicle frame on each side. Take note to install the shorter side of the bracket to the frame. Loosely secure the bracket using (1) M10 x 40mm bolt, (1) M10 lock washer, (1) M10 flat washer, and (1) M10 nut plate per side.

Note: Ensure the nut plate does not interfere with any plastic shield/brake line along the inside of the frame during installation.

**STEP 7**

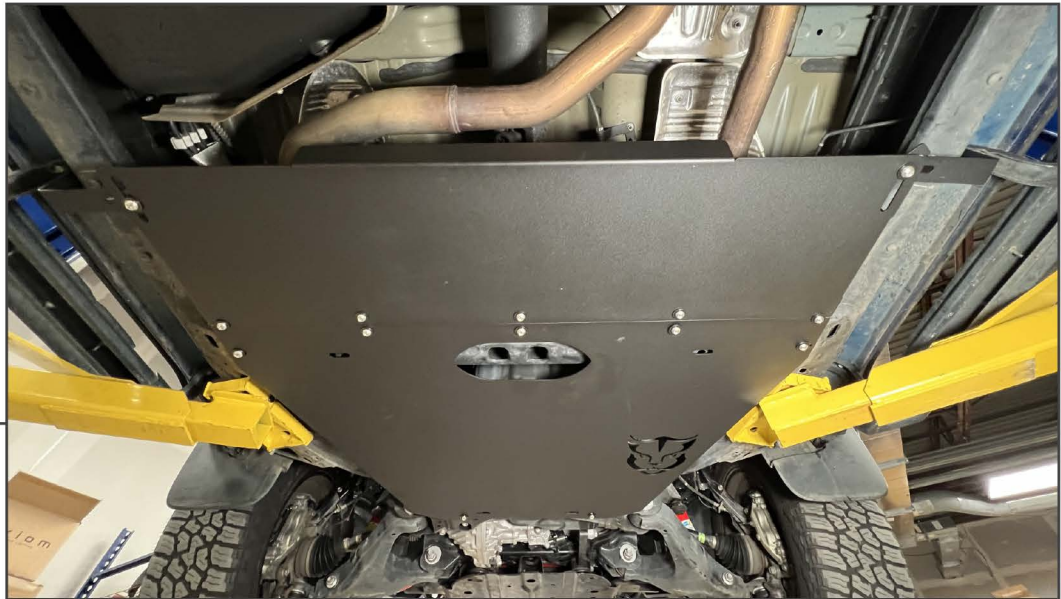


Loosely secure the rear skid plate panel to the center skid plate panel using (5) M10 x 20mm bolts, (5) M10 lock washers, and (5) M10 flat washers into the center skid plate panel threaded inserts.

**STEP 8**



Loosely secure the rear skid plate panel to the previously fitted brackets using (2) M10 x 40mm bolts, (2) M10 lock washers, (2) M10 flat washers, (2) spacers, and (2) M10 nut plates.



**STEP 9**

Adjust the skid plate panels for best fit, then tighten all skid plate mounting hardware until secure.

Installation is now complete.