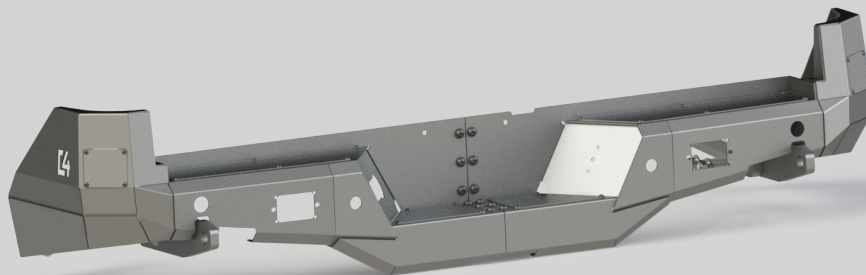




## Installation Instructions

# 2024+ Tacoma Overland Rear Bumper



# Step 1

Install the recover points using the 1/2" hardware (Figure 1). The 3/4" plate spacer goes between the recovery point and the frame. Repeat on other side.

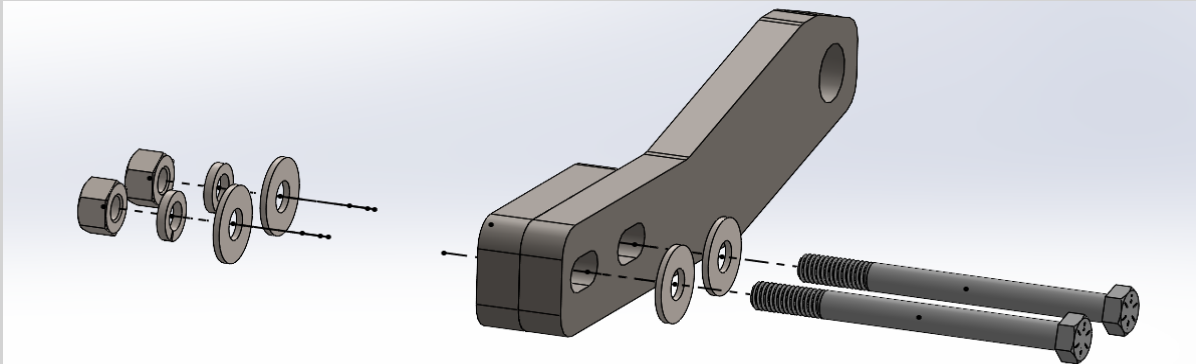


Figure 1: Recovery point with spacer and 1/2" hardware. Note, the frame is located left of the spacer in the photo.

# Step 2

Assemble the center section using the 3/8" black stainless hardware and the backing L-bracket (Figure 2). Place the backing plate on the back side of the bumper and insert the hardware as shown below. You may want to leave this hardware loose until the next step. Be sure to use washers on bot sides as shown.

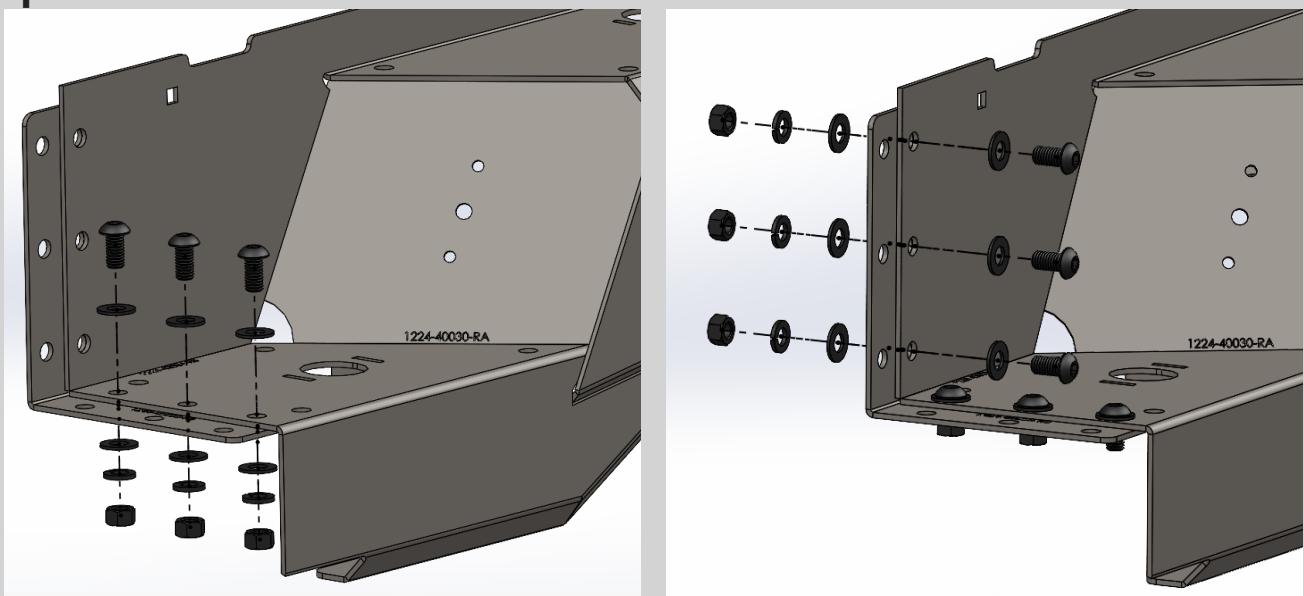


Figure 2: 3/8" black stainless hardware used to attach each side of the bumper.

## Step 3

Align the two sides of the bumper and tighten the 3/8" hardware (Figure 3). Make sure the gap between the two sides is even before tightening the hardware.

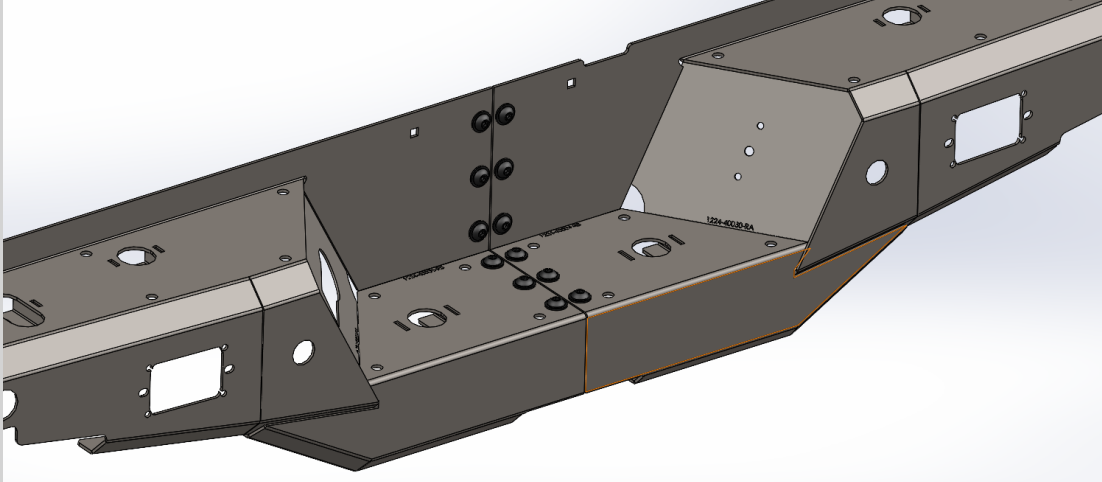


Figure 3: 3/8" hardware attaching each side with the backing L-bracket.

## Step 4

Install the plastic blind spot monitor covers using the black 10-24 screws (Figure 4).

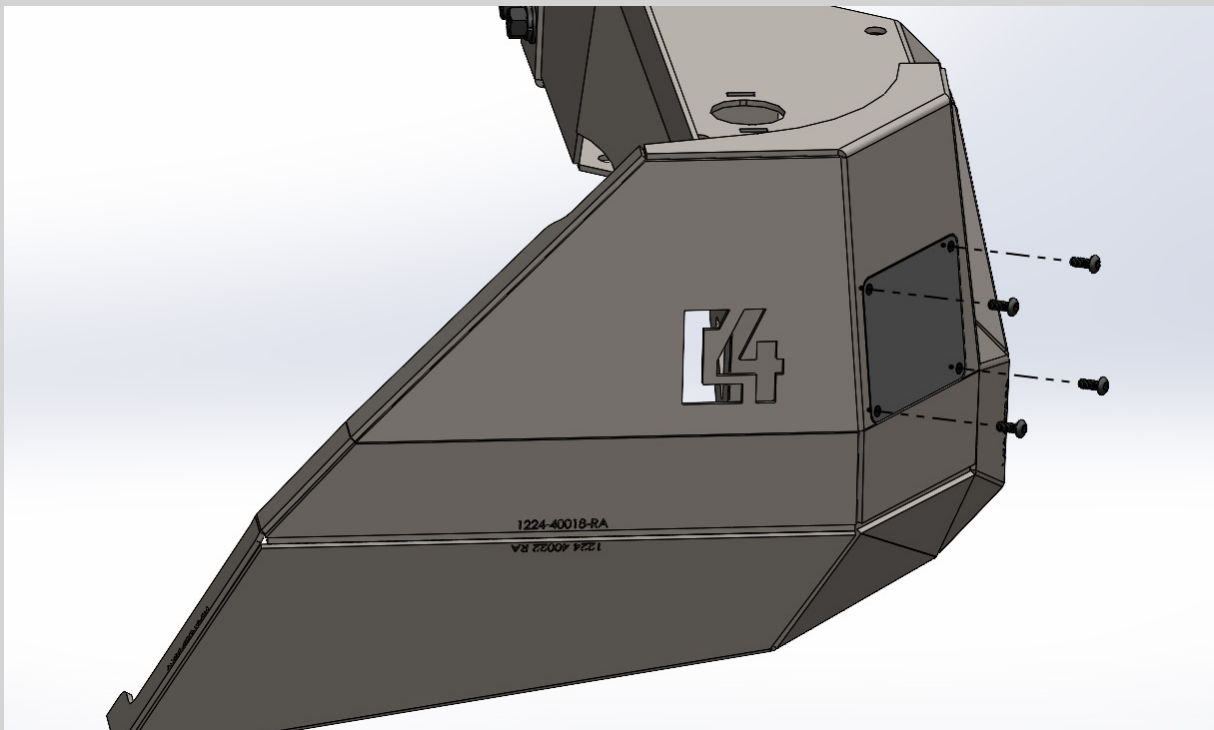


Figure 4: BSM cover installation using black 10-24 screws.

## Step 5

Install the bumper assembly onto the truck and secure it in place using the factory M8 flange nuts and supplied 1/4" flat washers (Figure 5).

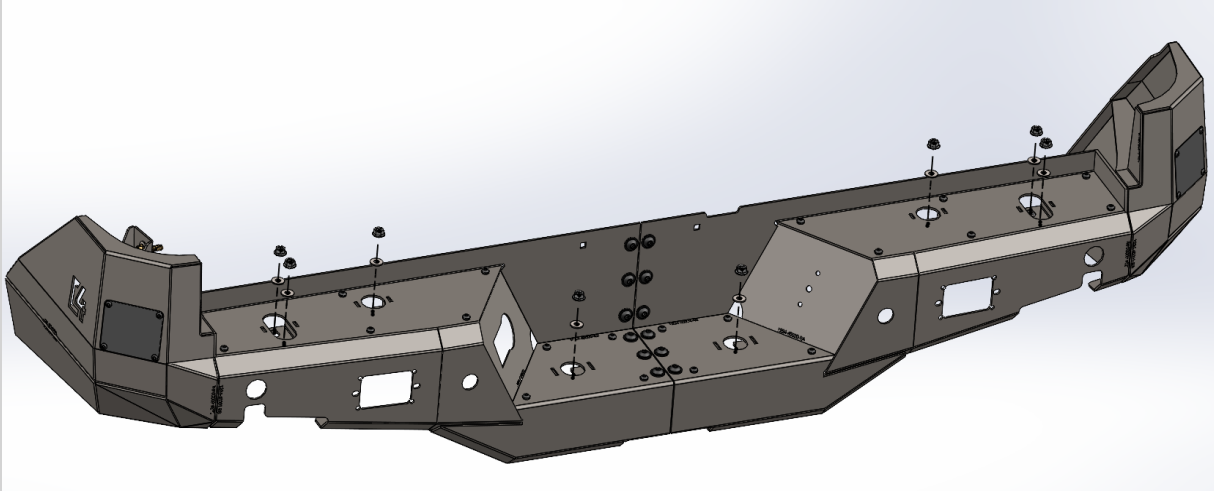


Figure 5: Use the factory nuts and 1/4" washers to secure the bumper to the frame.

## Step 6

Once the M8 nuts are tight, install the top covers using the black 1/4" button head bolts (Figure 6).

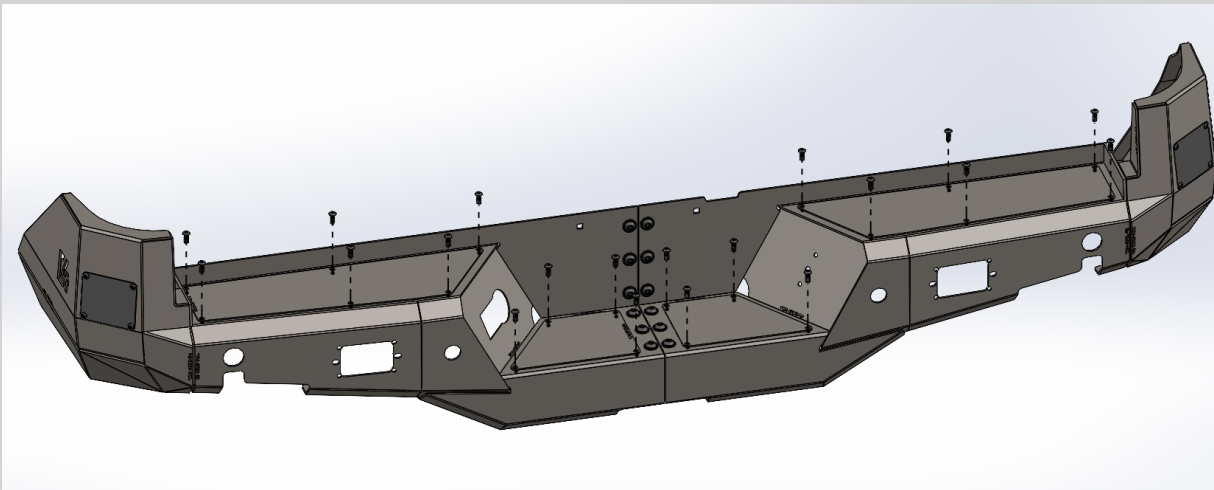


Figure 6: 1/4" black stainless button head bolts securing top covers.

## Step 7

Install the front support brackets in the bumper using the 3/8" carriage bolt, washer, and flange nut (Figure 7). The bracket will align with a hole in the frame where the factory bumper attached. The bracket will have a slight angle forward to align with the hole.

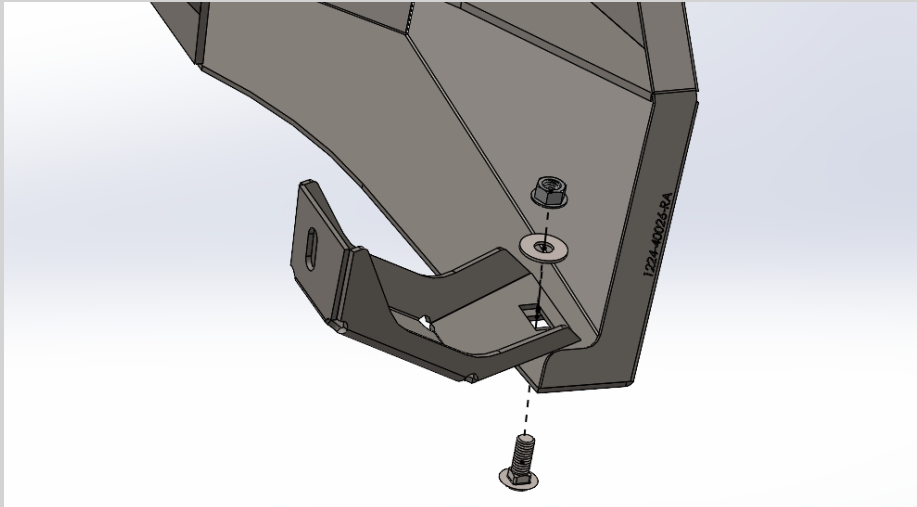


Figure 7: Front support bracket installed with 3/8" carriage bolt, washer, and flange nut.

## Step 8

Bolt the front support bracket to the frame using the factory M8 bolt and supplied 3/8" flat washer (Figure 8).

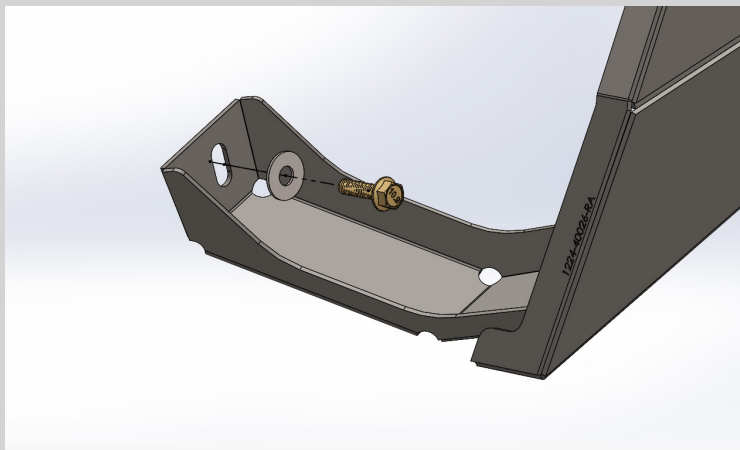


Figure 8: Factory M8 bolt and 3/8" washer securing front support bracket to frame.

**PROVEN ARMOR  
FOR EVERY ADVENTURE**



***FABRICATION***