

# INSTALLATION MANUAL

# RIVAL

UP-TO-DATE  
MANUAL

PRODUCT: ENGINE SKID PLATE

APPLICATION: TOYOTA TACOMA (2024-PRESENT)  
TOYOTA LC250 (2024-PRESENT)  
TOYOTA 4RUNNER (2025-PRESENT)

PART NO: 2333.9571.2.6



## CAUTION!

To reduce the risk of serious injury or damage to property: before you start installing and using this product, read the full instructions, pay special attention to the conditions of safe use and recommendations for installation! When installing or maintaining this product, it is necessary to use protective goggles. Check the integrity of the installed components and torque all hardware every 250 miles (400 kms). Discontinue use if there is any damage to the structure or fasteners!

## NOTICE

Skid plates are supplemental protection. We cannot guarantee protection against all possible damage from impacts. When driving, be careful of objects and terrain that may damage sensitive parts of the vehicle.

# ENGINE SKID PLATE



Part number: 2333.9571.2.6

Suited to vehicle: Toyota Tacoma 2.4, 2.4 Hybrid; AT; 4WD, RWD  
(2024-PRESENT)  
Toyota LC 250 2.4, 2.4 Hybrid, 2.7, 2.8D; AT; 4WD  
(2024-PRESENT)  
Toyota 4Runner 2.4, 2.4 Hybrid; AT; 4WD  
(2025-PRESENT)

Material: Aluminum



## SAFETY NOTICE

- The RIVAL skid plate is designed to complement the use and design of the specified vehicle under conditions underlined by the vehicle manufacturer.
- While driving the vehicle at any speed, collision with another vehicle, animal or object must always be avoided.
- Following any collision with another vehicle, animal or object, the RIVAL skid plate and the vehicle must be inspected by a specialized or suitably qualified vehicle technician for possible damage to the components and assemblies in order to confirm suitability for further use of the vehicle.
- It is strongly recommended that you do not operate a vehicle with a damaged skid plate or its components. In the case of damage, please contact the nearest RIVAL dealer. A damaged vehicle or skid plate is extremely dangerous and should be avoided at all cost.
- If applicable, we recommend using a funnel when changing the oil to prevent spills and ensure a clean process.

## INSTALLATION NOTICE

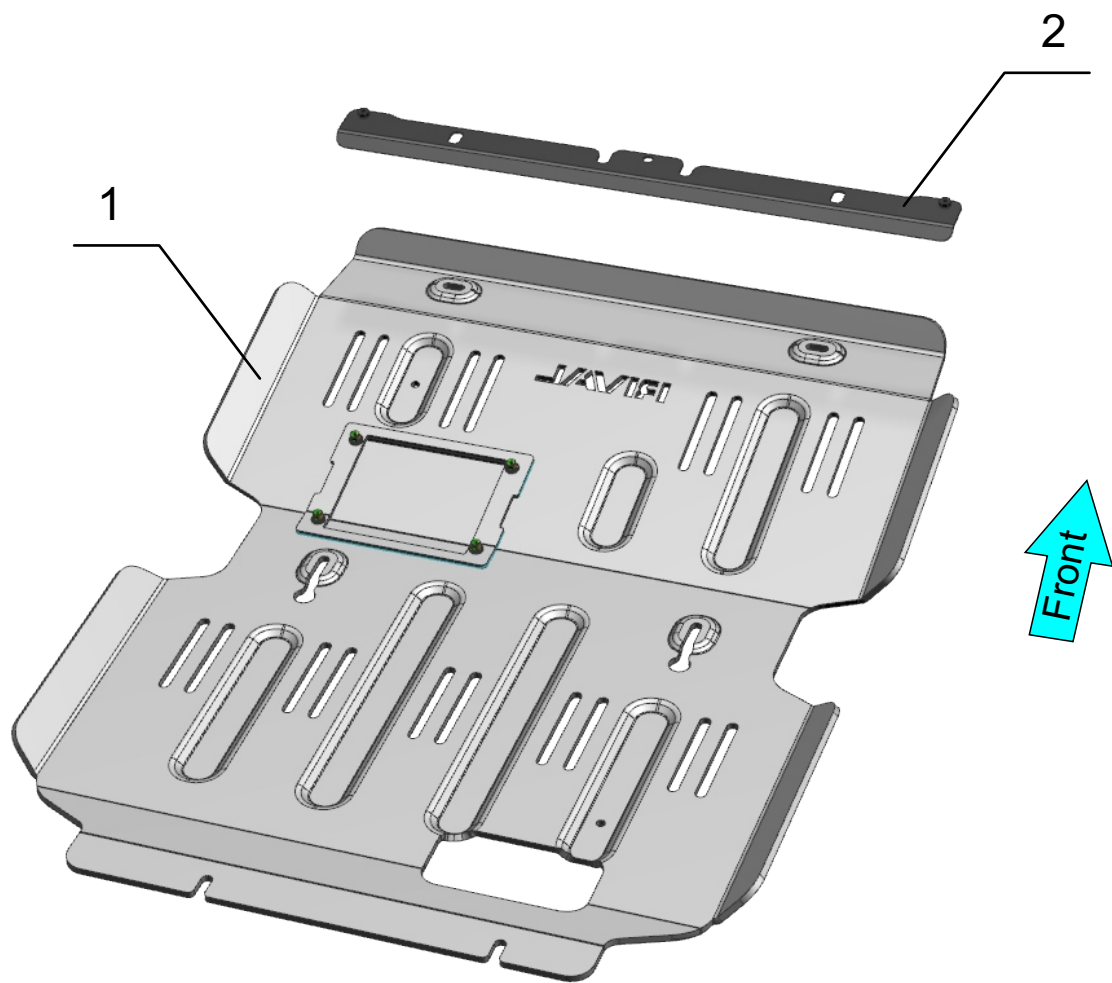
- The RIVAL skid plate must be mounted to the vehicle according to this installation manual.
- Personal safety during the installation process must be adhered to at all times.
- Do not install this skid plate on vehicle models other than those listed in this manual.
- We recommend using blue threadlocker on all hardware.
- Estimated time for installation: 1 hour.

## REQUIRED TOOLS

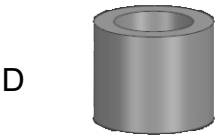
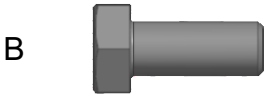
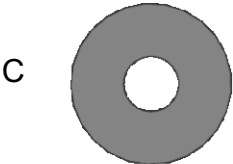
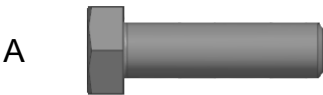
- \* Basic tool kit
- \* Torque wrench

## TORQUE SETTING

- \* M8 - 24 N·m (17.7 lb/ft)

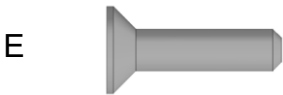


- 1. Engine skid plate.....Qty 1
- 2. Mounting bracket for LC250.....Qty 1



A. Bolt M8x1.25x40.....	Qty 2
B. Bolt M8x1.25x25.....	Qty 4
C. Washer M8.....	Qty 6
D. Spacer 15 mm.....	Qty 2

SPARE PARTS



E. Countersunk bolt M6x1x20.....	Qty 4
----------------------------------	-------



# INSTALLATION PROCEDURE

# RIVAL

\*If equipped, remove factory or any aftermarket skid plates that might interfere with installation.

\*\*Skip to page 6 for installation on Toyota Tacoma and Toyota 4Runner.

## Toyota LC250 (steps 1-10).

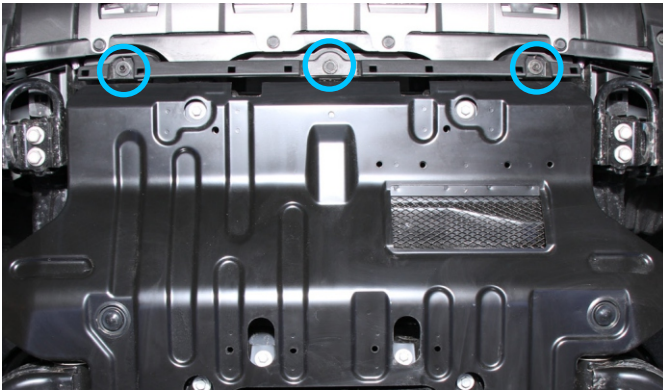


Fig. 1

1. Remove factory plastic cover as shown in Fig.1.

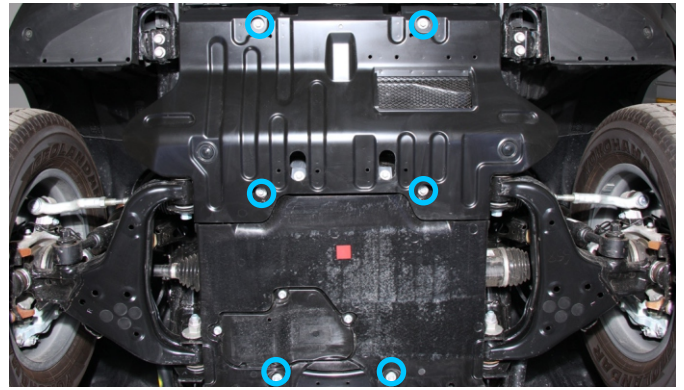


Fig. 2

2. Remove factory skid plates as shown in Fig.2.

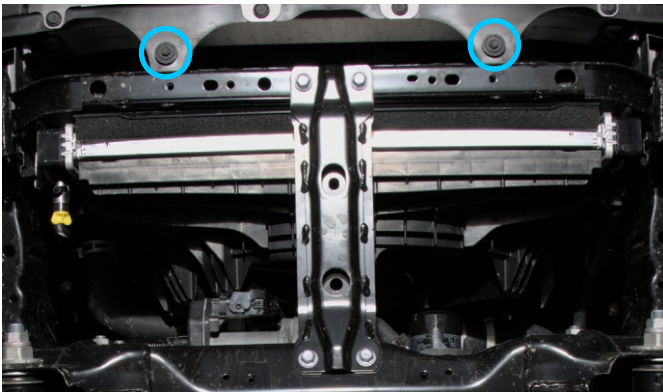


Fig. 3

3. Remove factory bolts as shown in Fig.3.

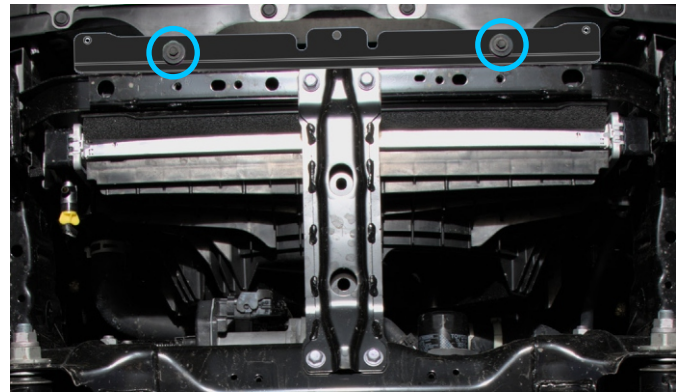


Fig. 4

4. Install supplied mounting bracket (item 2) as close as possible to the factory bumper and secure it using factory bolts from step 3 as shown in Fig.4.

**\*Torque hardware.**

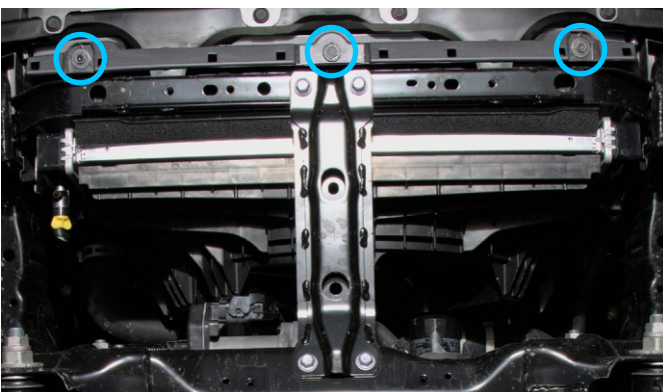


Fig. 5

5. Secure factory plastic cover to previously installed mounting bracket (item 2) using factory bolts from step 1 as shown in Fig.5.

**\*Torque hardware.**

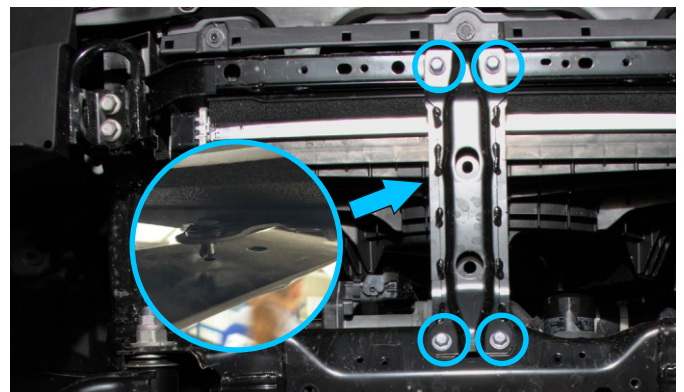


Fig. 6

6. Remove factory cross brace as shown in Fig.6.

# INSTALLATION PROCEDURE

**RIVAL**

\*If your Tacoma doesn't have the factory front crossmember, purchase and installation of part # 2333.9571.RK is required.

## Toyota Tacoma / LC250 / 4Runner (steps 7-10).

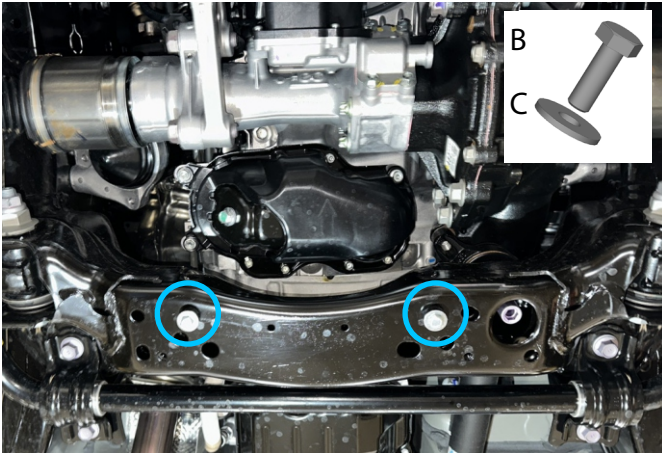


Fig. 7

7. Loosely install supplied M8x25 bolts with M8 washers (items B,C) into factory threaded holes as shown in Fig. 7.

**\*Do not tighten yet.**

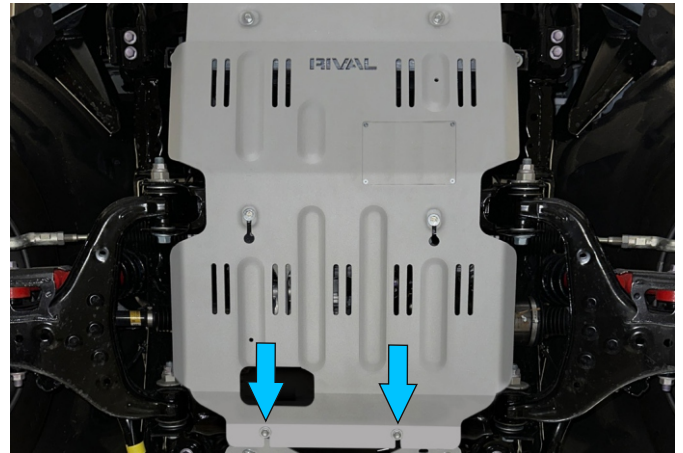


Fig. 8

8. Slide the rear of the skid plate over the previously installed M8 hardware as shown in Fig.8.

**\*Do not tighten yet.**

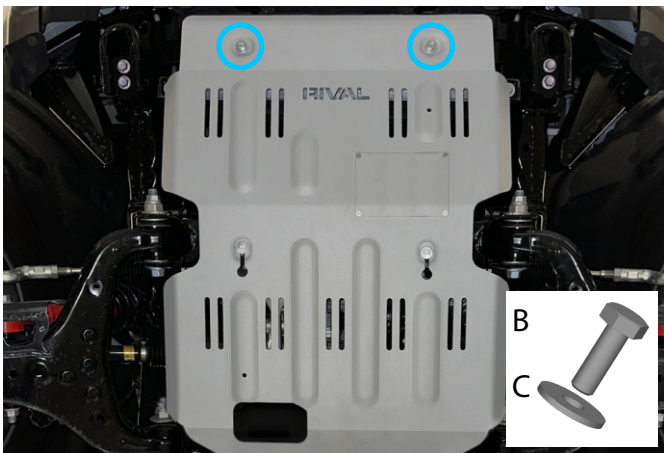


Fig. 9

9. Secure the front of the skid plate using M8x25 bolts and M8 washers (items B, C) as shown in Fig. 9.

**\*Do not tighten yet.**

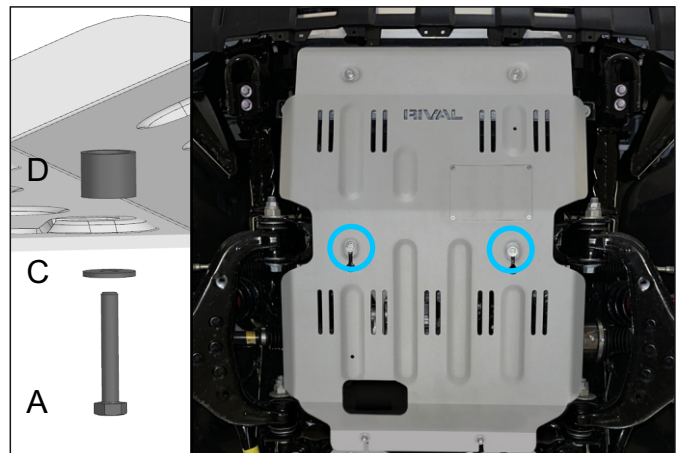


Fig. 10

10. Secure the middle of the skid plate using M8x40 bolts, M8 washers and 15mm spacers (items A, C, D) as shown in Fig. 10.

**\*Once all bolts are installed, check skid plate alignment and torque all installed hardware.**



**Before operating a vehicle fitted with RIVAL skid plates:**

- **Make sure all fittings are properly torqued.**
- **Ensure the integrity of the structure and its components.**

