



www.torq-engineering.com

INSTALLATION INSTRUCTION

Part # HWM-001

Notice to Dealer / Consumer

Important! Read all instructions before attempting any work on the vehicle.

Disclaimer Notice: Installing this suspension system on any vehicle implies that you are in agreement with the following term and conditions with respect to that vehicle, the vehicle owner, and any or all occupants of said vehicle at any time:

- Torq Engineering is not responsible, and cannot be held responsible for any conditions of said vehicle including, but not limited to the following: 1) Any and all adverse behavior, premature failure, or breakage caused by oversized tires and wheels, improper installation, failure to follow instructions, or any general negligence caused by installer or owner of said vehicle. 2) Any breakage or premature failure caused by racing or driver negligence. 3) Any incident determined to be caused by an increase height in said vehicle's center of gravity. 4) Any incident determined to be caused by improper installation. 5) Any incident determined to be caused by a failure of materials.
- Torq Engineering is to be held harmless by the installer of this suspension component, owner of said vehicle, and any parties related directly or indirectly to said vehicle or owner of said vehicle. Torq Engineering is to be held harmless by all parties mentioned during the course of any and all circumstances or incidence resulting from the installation of this suspension component.
- It is not the intention of Torq Engineering that said vehicle be modified for use on public highways sanctioned by the Department of Transportation, or any state or local governing body. Vehicle owner accepts sole responsibility for ensuring that said vehicle is not in violation of local, state, or federal laws or vehicle code. Please check local vehicle laws and regulations before modifying your vehicle.

By installing this kit or having this kit installed on your vehicle, you are implying that you agree to the above terms and conditions. Please do not install this system if you do not agree.

WARNING:

Vehicle modified for Off-road use may handle differently and vehicle may roll-over.

Vehicles modified for off-road are generally not designed to improve cornering or maneuverability on the highway, therefore it is imperative to familiarize yourself and all operators of the vehicle of the special driving characteristics of the vehicle. Failure to operate vehicle in a safe and conservative manner may cause you, your passengers and third parties to suffer serious injury or even death if control is lost and vehicle overturns.

Always wear your seatbelt and shoulder harness. Seatbelts not only help to protect occupants from injury but also keep the driver behind the wheel and in control when operating in rough terrain. Always remain on trails and observe conservation techniques while operating your vehicle.

2016+ TOYOTA TACOMA 3RD GEN ALL MODELS

Bill of Materials

Part #	Qty	Description
HWM-001A	1	Hidden Winch Mount
HWM-001B	2	Power Steering Cooler Relocation Brackets
HWM-001C	1	Front Valance Support

Hardware Pack

4	M8 x 35 bolts
4	M8 Nuts

Grade 8 nut torque specifications

Standard		Metric	
5/16" nuts	20 ft. lbs.	M6	9 ft. lbs.
3/8" nuts	35 ft. lbs.	M8	23 ft. lbs.
7/16" nuts	60 ft. lbs.	M10	45 ft. lbs.
1/2" nuts	90 ft. lbs.	M12	75 ft. lbs.
9/16" nuts	160 ft. lbs.	M14	120 ft. lbs.
5/8" nuts	175 ft. lbs.	M16	165 ft. lbs.

INSTALLATION NOTES:

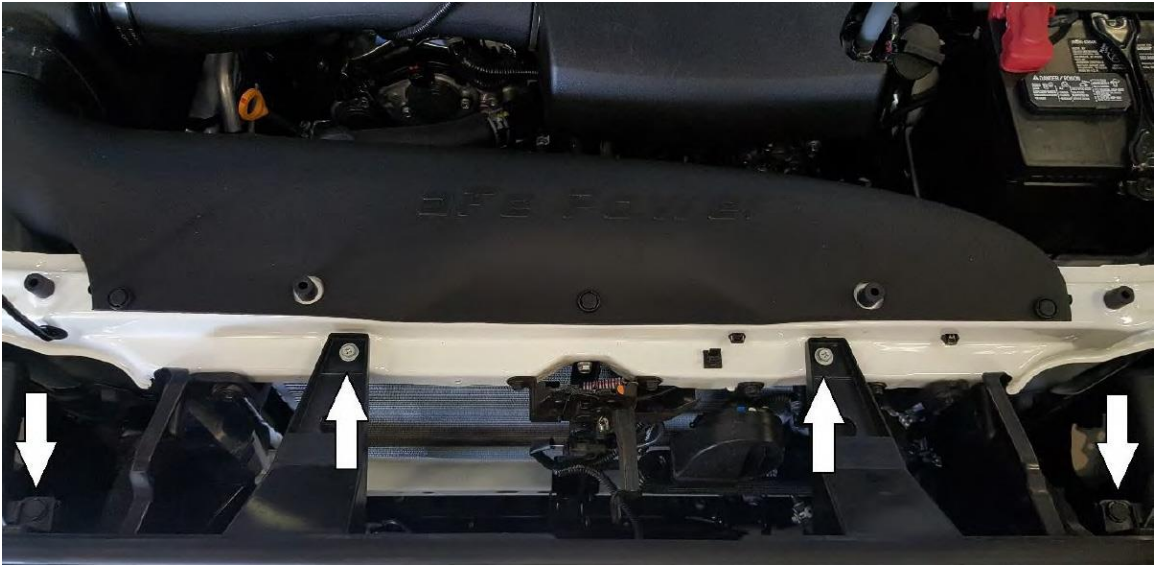
- Inspect the contents of the kit and read the entire instructions before proceeding.
- We recommend this installation be performed by a qualified technician
- Torque all hardware to factory specifications
- We recommend using red Loctite on all bolts
- When removing wheels, support vehicle with jack stands

IMPORTANT NOTE:

- Replaces factory aluminum bumper mount.

Installation Instructions

1. Remove the factory grill by removing the 2 screw and 2 clips on top. Once these are removed, gently pull the grille forward from the bottom where it is clipped in.



2. Removing the factory front bumper. Partially remove the front part of the inner fender well so you can get to the clips holding the outside of the bumper on. This is held in place by (2) 10mm screw on the bottom, and 2 clip and (1) 10mm screw on the inside. Once the inner fender is pulled back, you can get to the 4 clips that hold the end of the fender flair, and the 1 clip holding the bumper skin that need to be released that is in the middle of the other 4 clips.

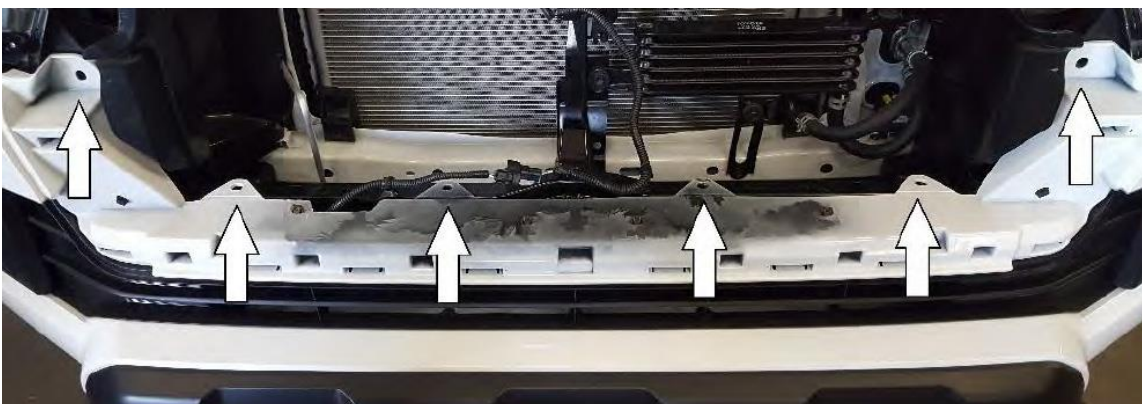




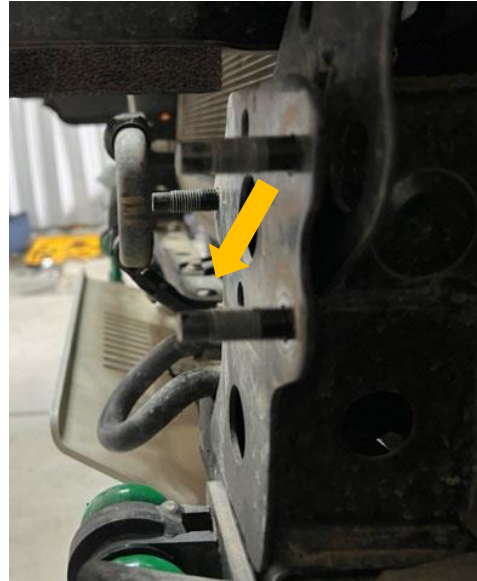
3. Remove the bumper skin from the bumper mount by removing the 6 remaining clips located under the grille, and the 2 10mm screws on the bottom. Unplug the fog light harness and unclip it from the sheet metal.



4. Remove the (6) 14 mm nuts holding the factory aluminum bumper support on.



5. The power steering cooler may need to be slightly moved back to clear the new winch. Use the supplied brackets to move the cooler back towards the radiator but does not contact.



6. Lift the winch mount in place and secure using the factory bolts. Make sure to connect the motor ground and control box ground to the winch before bolting the winch down because it is difficult to read once bolted down. Use the rear 2 winch bolts to install the lower valance bracket.





7. Loosely place the black factory outer plastic, with the Hawse cut out, onto the factory bumper skin. Adjust the Hawse so that it is lined up with your cut out. Tighten the Hawse.
8. Plug your fog lights in. Reinstall the grille by clipping the bottom back in and reinstalling the upper (2) screws and (2) clips.

Final Check.

- Check all bolts
- Re-Torque all bolts after 100 miles

