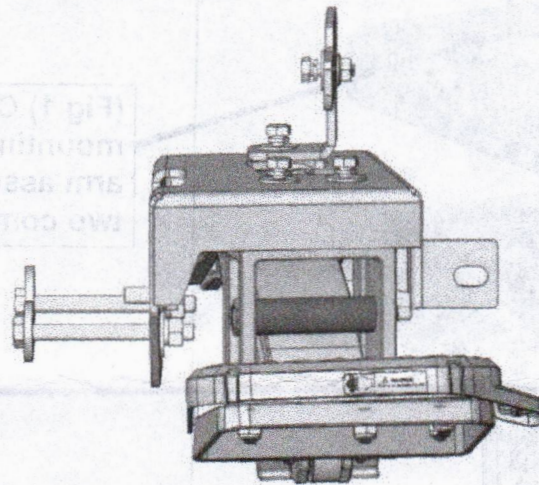




## INSTALLATION INSTRUCTIONS

### PARTS LIST: TT67182

Qty	Item Description	Qty	Item Description
1	Corner Step Base Component	4	8mm x 24mm x 2mm Flat Washers
1	Step Pad (New design)	4	8mm Nylon Lock Nuts
1	Support Bracket	4	8-1.25mm x 25mm Combo Bolts
1	Frame Mounting Bracket	2	10mm Hex Nuts
1	Bumper Support Bracket	4	8-1.25mm x 20mm T-bolts
1	10mm Double Bolt Plate	1	8mm Flange Nuts
2	10mm x 30mm x 2.5 Flat Washers	1	10mm x 25mm fine pitch thread Hex bolt
3	10mm Lock Washers	1	10mm x 20mm x2mm flat washer



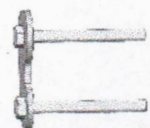
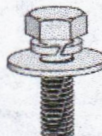
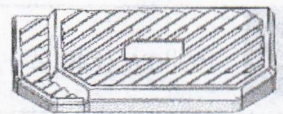
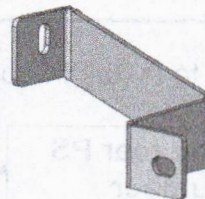
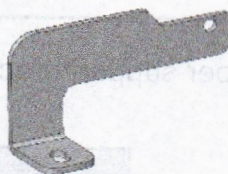
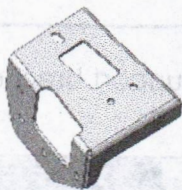
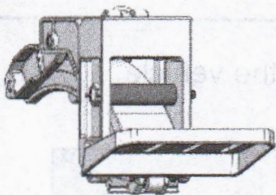
Linkage arm  
assembly

Frame mounting  
bracket

Support bracket

Bumper support  
bracket

Step Pad



Lock  
washer

Flat  
washer

Hex Bolt

Combo Bolt

Lock Nut

T-Bolt

Double bolt  
plate



### TOOLS REQUIRED



Ratchet



13mm Socket



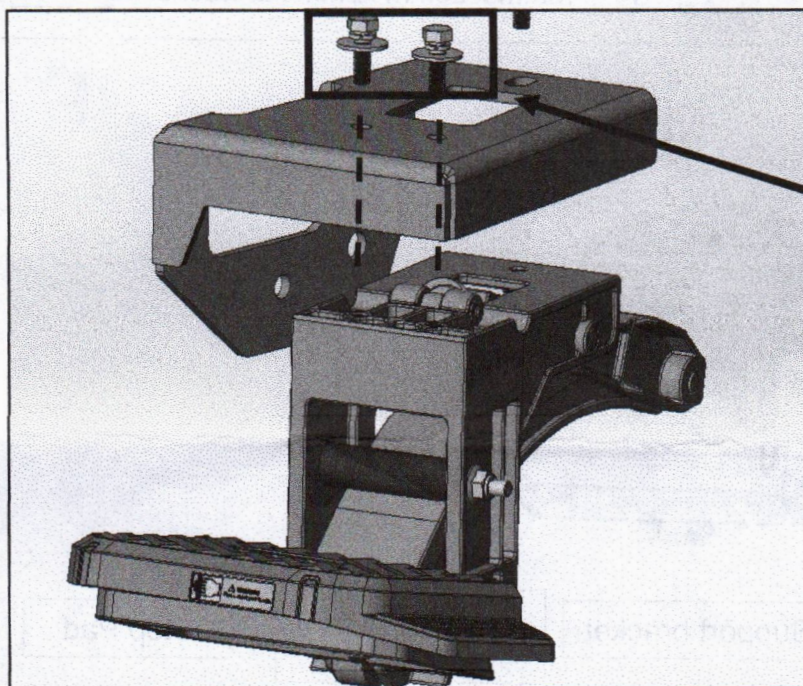
Extensions



Wrench

1

Follow (Fig 1) to combine the frame mounting bracket to the linkage arm assembly. **Do not fully tighten hardware at this time.**



(Fig 1) Combine the frame mounting bracket to the linkage arm assembly using only the front two combo bolts

2

Follow (Fig 2 – 6) to install the bumper support bracket & support bracket to the vehicle.

(Fig 2) Starting at the rear PS remove the OEM bumper support bracket

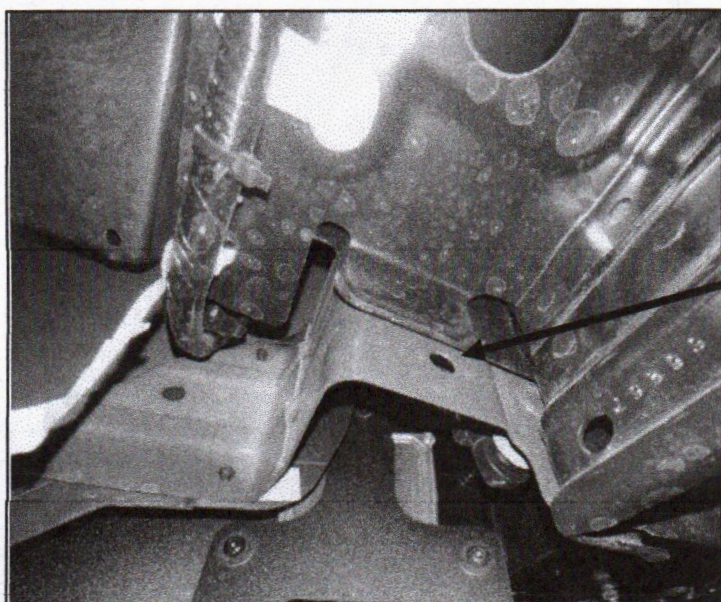
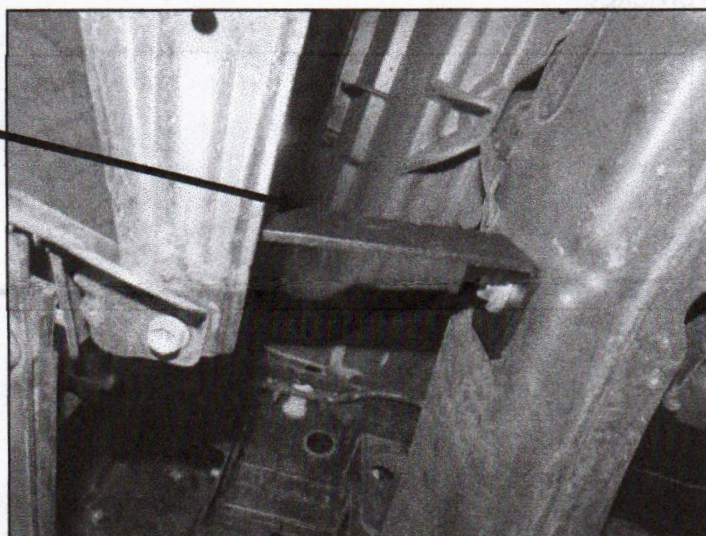






**(Fig 3) OEM bumper support bracket removed**

**(Fig 4) Install the supplied bumper support bracket using the OEM HW**

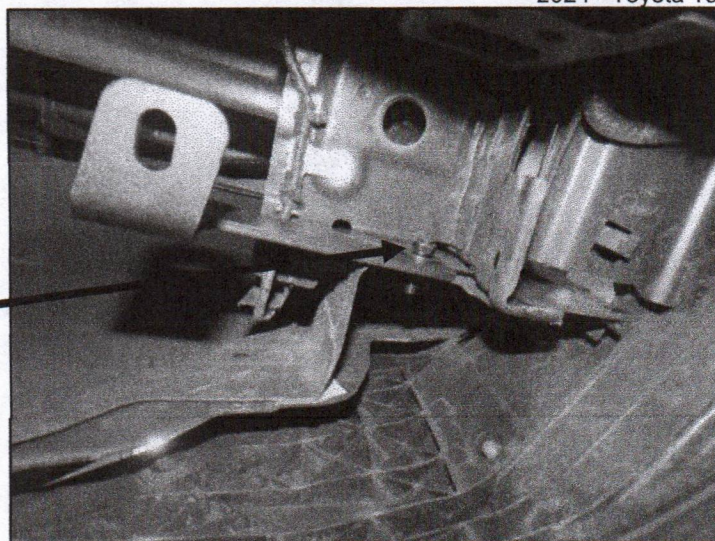


**(Fig 5) Install the support bracket using this mount hole**



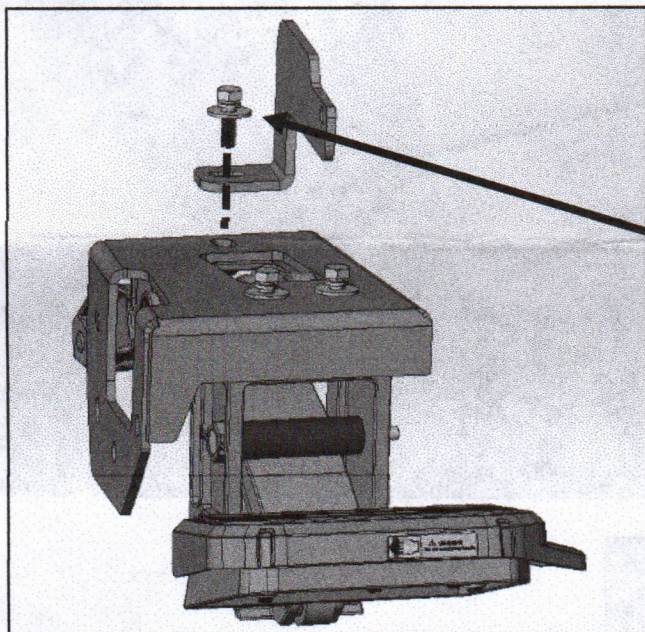
**(Fig 6) Support bracket installed**

- (1) 8mm Combo Bolts**
- (1) 8mm Flanged Nut**



**3**

Follow (Fig 7-11) to install the frame mounting bracket + linkage arm assembly to the support bracket.

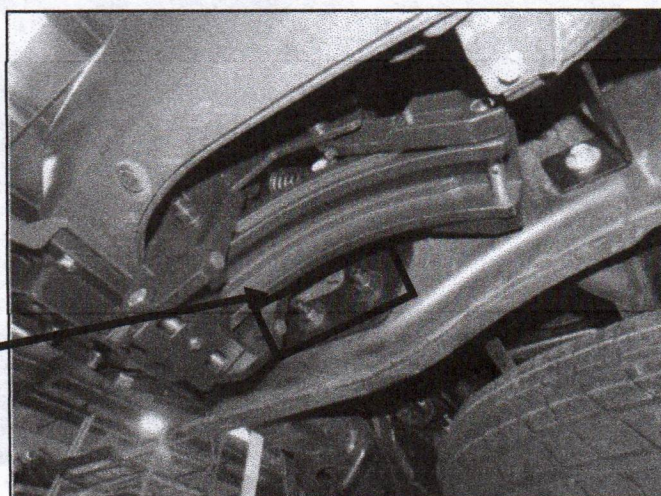


**(Fig 7) Using the rear third combo bolt, mount the support bracket to the frame mounting bracket + linkage arm assembly**

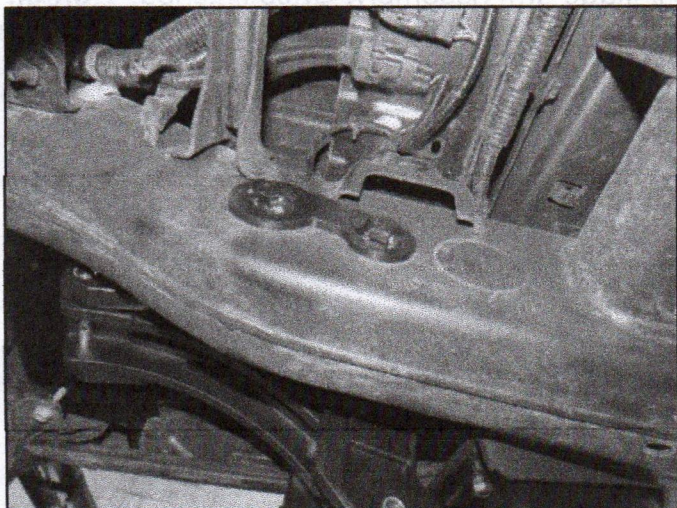
- (1) 8mm Combo Bolts**

**(Fig 8) Using the double bolt plate mount the bottom portion of the frame mounting bracket to the frame of the vehicle**

- (1) 10mm Double Bolt Plate**
- (2) 10mm Hex Nuts**
- (2) 10mm Lock Washers**
- (2) 10mm x 30mm x 2.5mm Flat Washers**

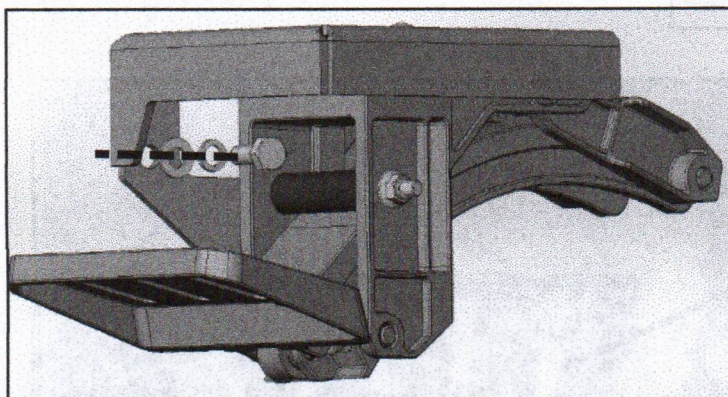
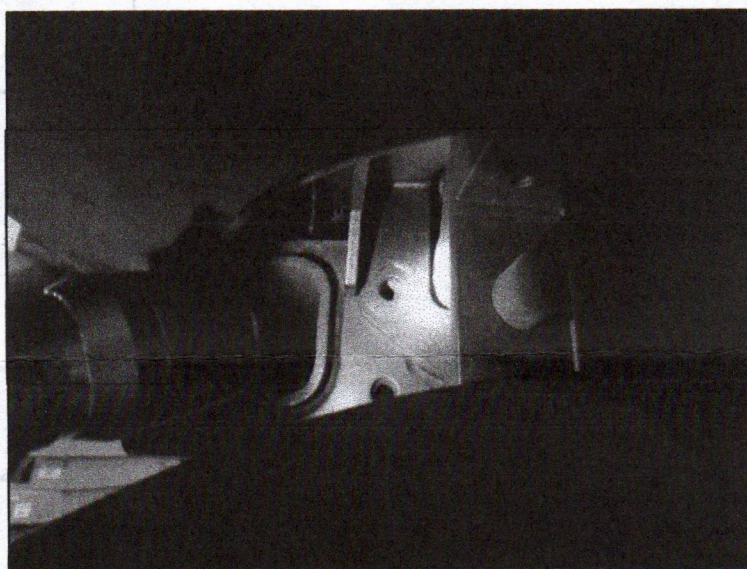






**(Fig 9) Double bolt plate (inner view)**

**(Fig 10) Install 10mm fine thread hex bolt in the final mount hole on the frame mounting bracket**



**(Fig 11) Install using following HW**

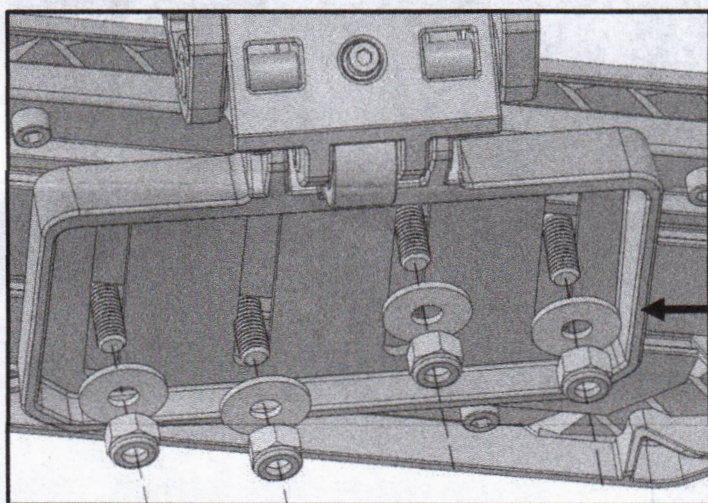
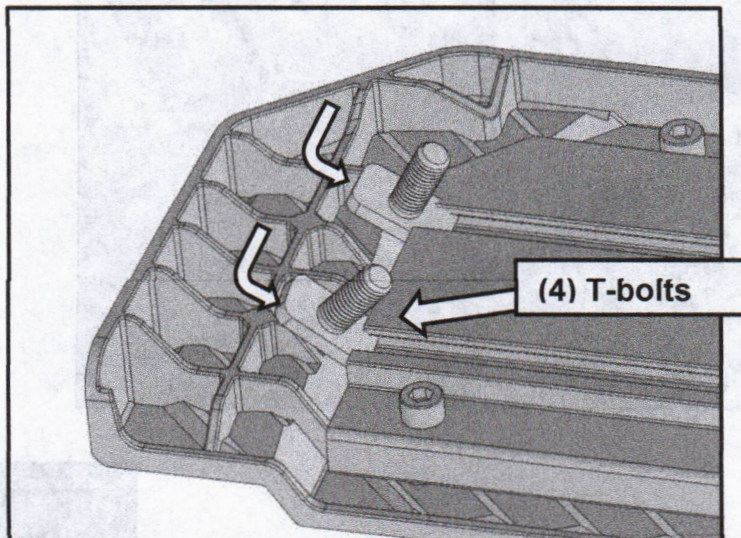
- (1) 10mm Fine Pitch Thread Hex bolt**
- (1) 10mm Lock Washers**
- (1) 10mm x 20mm x2mm Flat Washers**



4

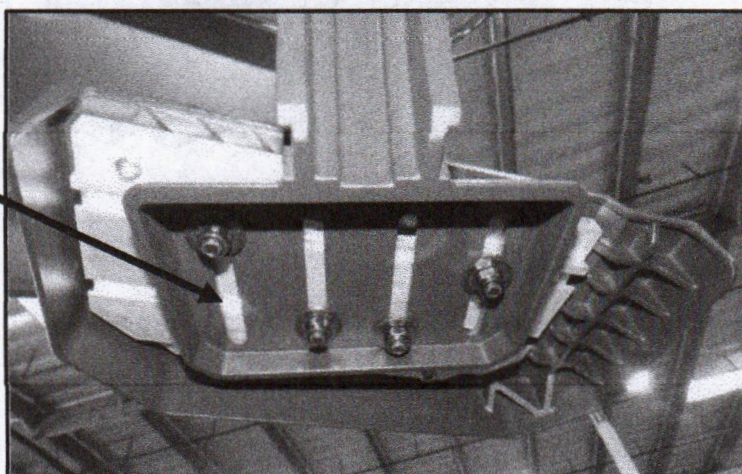
Follow (Fig 11-14) to install the step pad to the linkage arm assembly. Once finished, **Tighten all hardware at this time to the preferred position.** Do periodic inspections to the installation to make sure that all hardware is secure and tight.

(Fig 12) Slide in T-bolts through open ends of the channels underside of Step Pad (two T-bolts per channel)



(Fig 13) Attach Step Pad to Corner Step Base

(Fig 14) The step pad can be adjusted to the user







Complete Installation

**Note:** Excess dirt & debris may prevent from functioning properly. Simply clean the dirt off with after periodically to maintain optimal condition of corner step.