

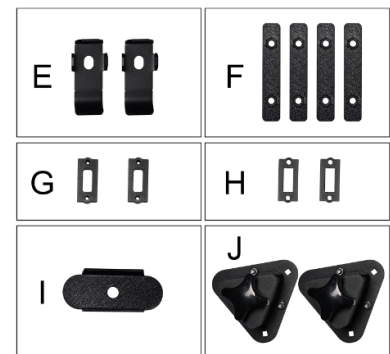
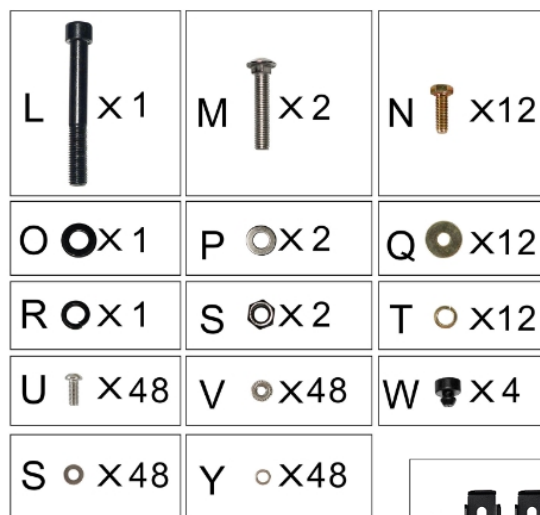
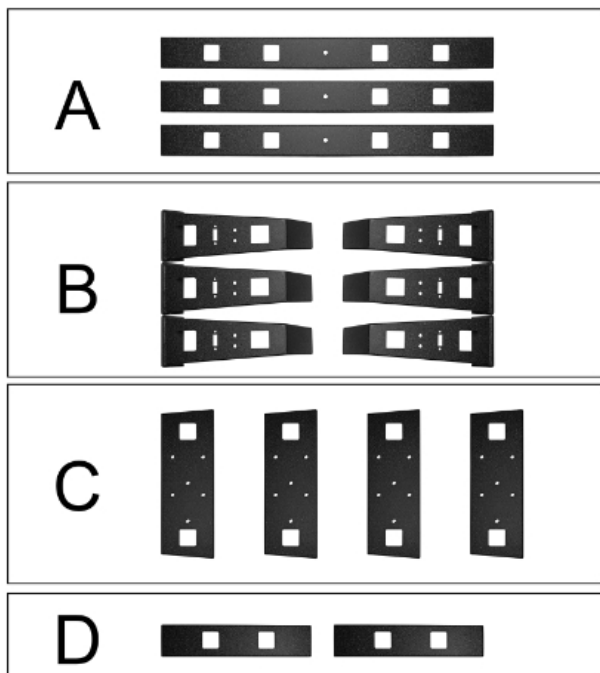
# REDROCK



## Tacoma Bed Rack

### TT6616

### (1) Contents:



### (2) Tools Required:

- A. 12mm Wrench;
- B. 5mm Hex Socket Wrench;
- C. 19mm Socket Wrench;



### **(3)Installation time:**

About 1.5 hours, 2-3 people may be needed. Installation time may differ according to your mechanical skill level.

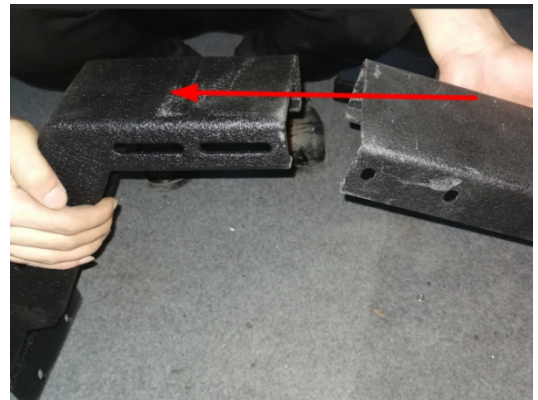
(PLEASE VERIFY ALL PARTS ARE PRESENT AND READ INSTRUCTIONS CAREFULLY BEFORE STARTING INSTALLATION!)

#### **(4)Installation instruction:**

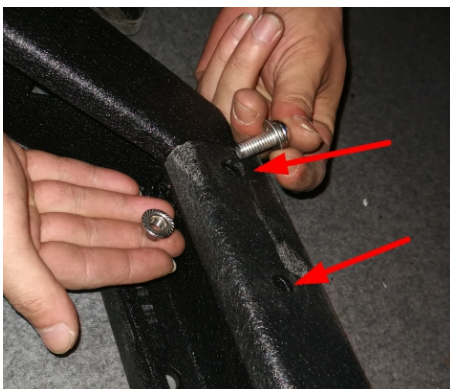
Step 1:

Install the PART"A" & PART"B" with PART"I",PART"J",PART"Q", PART"L".As shown below.

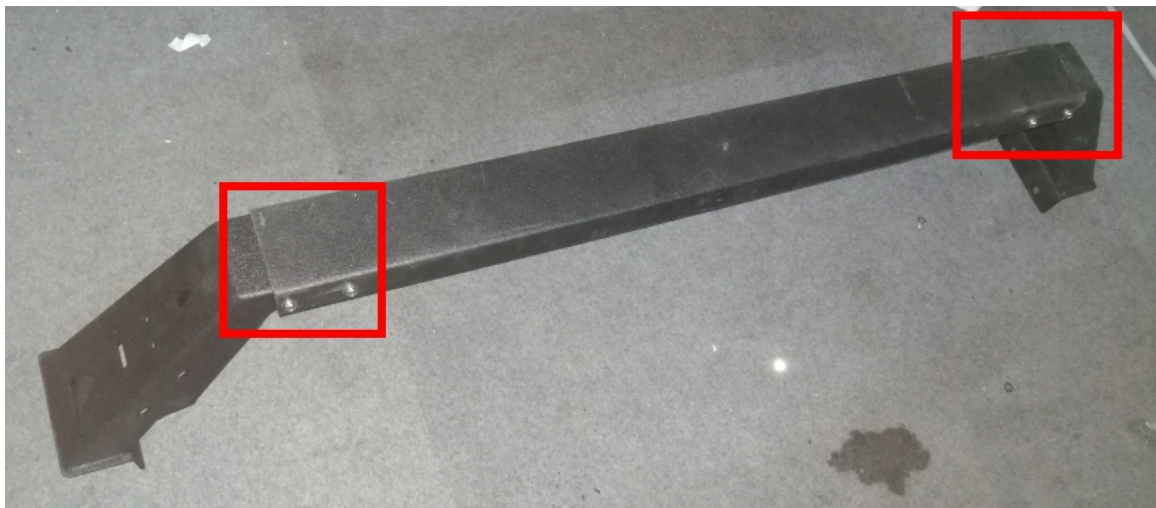
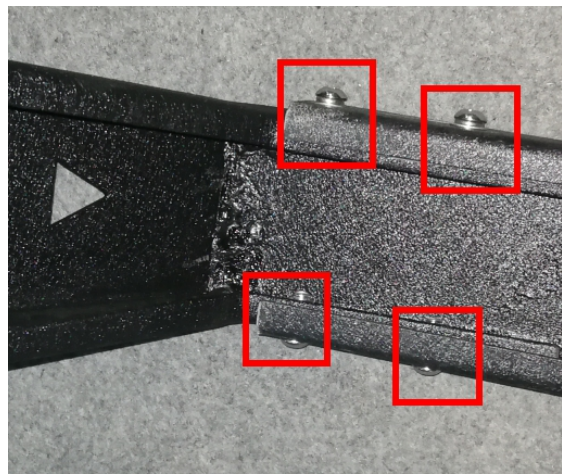
(1)Install the PART"A" & PART"B".



(2)Tighten it with PART"I",PART"J",PART"Q", PART"L".







Step 2:

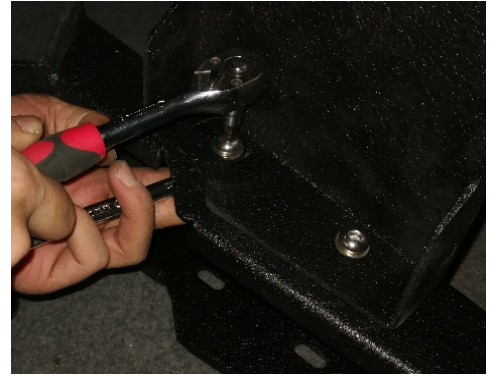
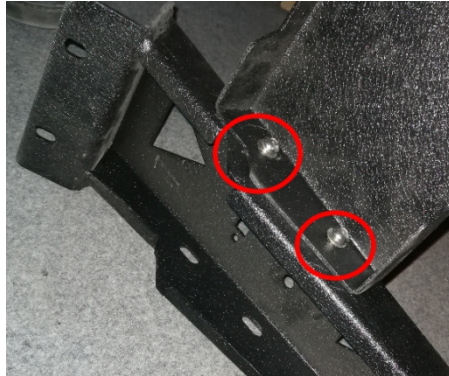
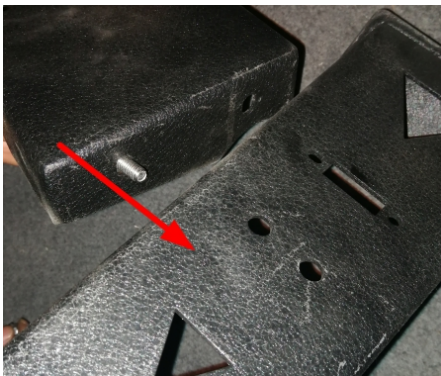
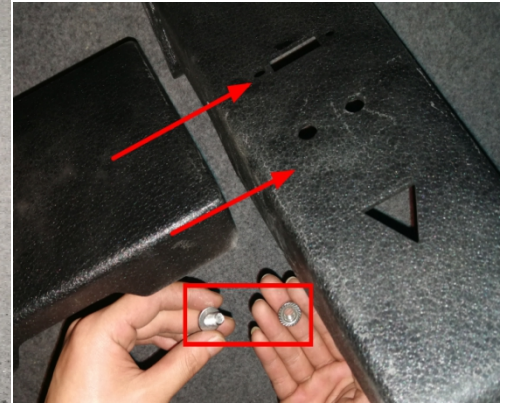
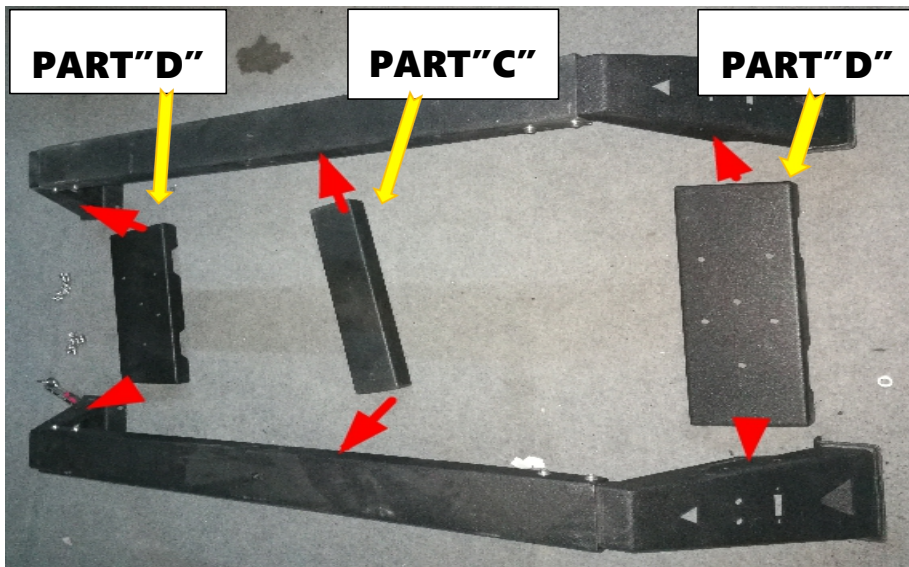
Install the PART"A" & PART"B" again. Then we got 3 of PART"A" & PART"B".



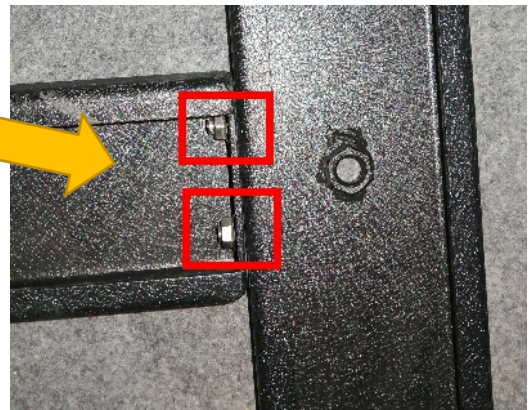
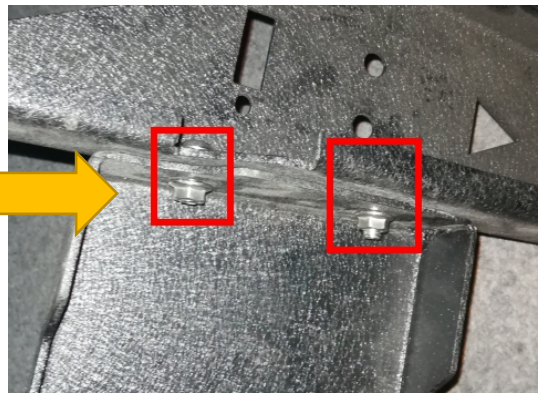
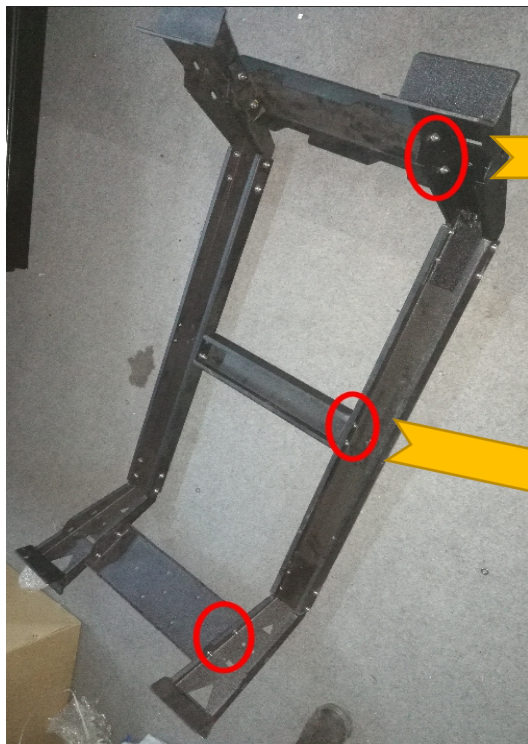


Step 3:

Install the PART"C" & PART"D" on the PART"A" & PART"B" with PART"I", PART"J",PART"Q", PART"L". And tighten it by the wrench.







Step 4:

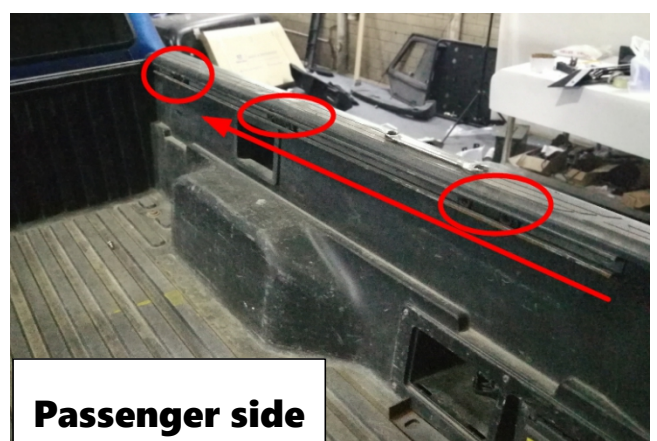
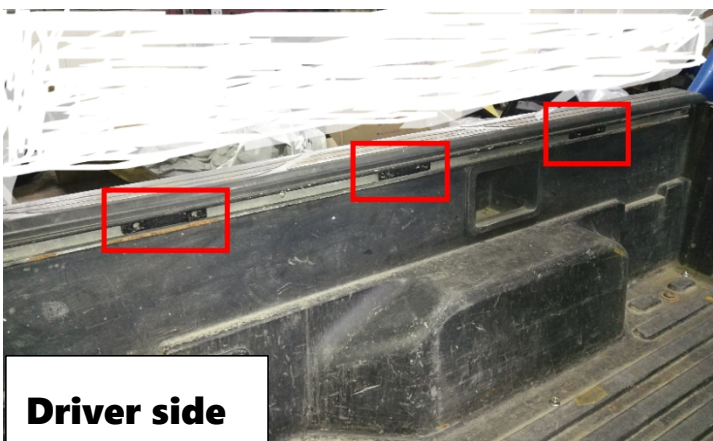
Repeat "Step 3" to install the another PART"C" & PART"D" on the PART"A" & PART"B".As shown below.





## Step 5:

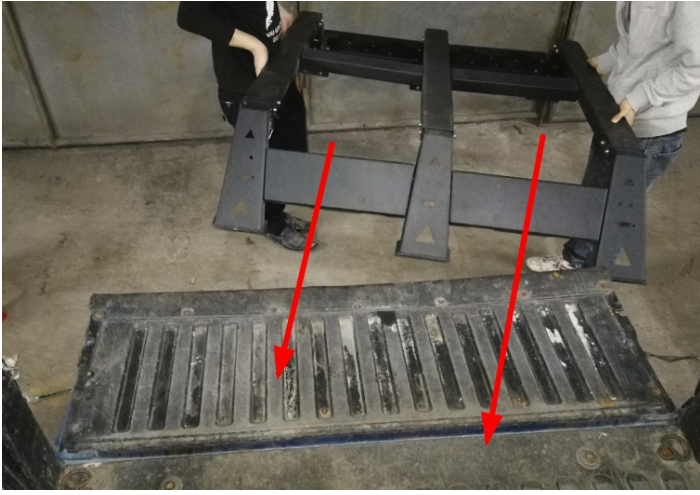
Install the PART "E" on the vehicle. Both side is the same. As shown below.



## Step 6:

After "Step 5", then install the Bed Rack on the vehicle.





## **Attention 1:**

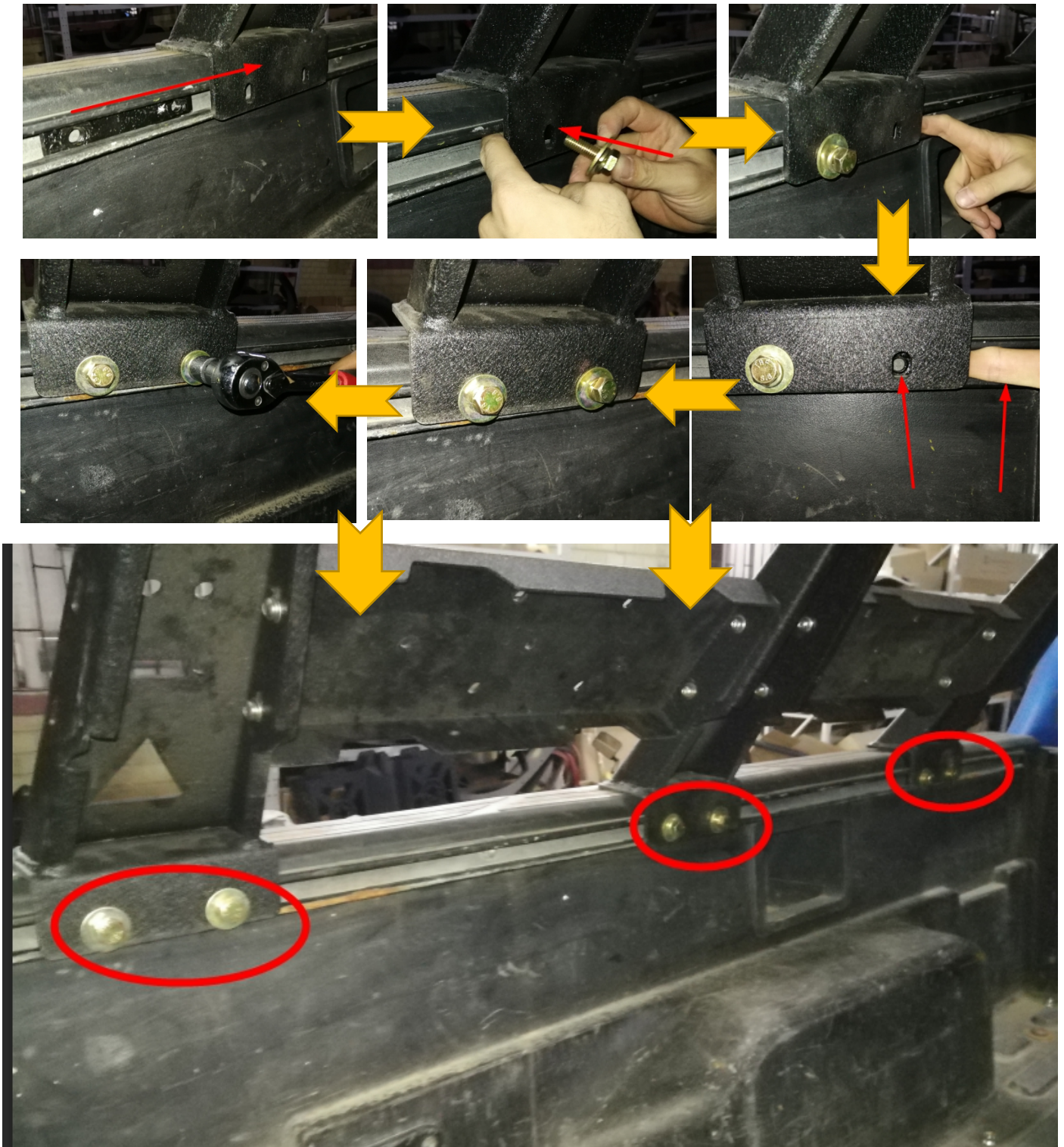
**Install the Bed Rack  
on the vehicle more  
back or more front is  
up to you.**





### Step 7:

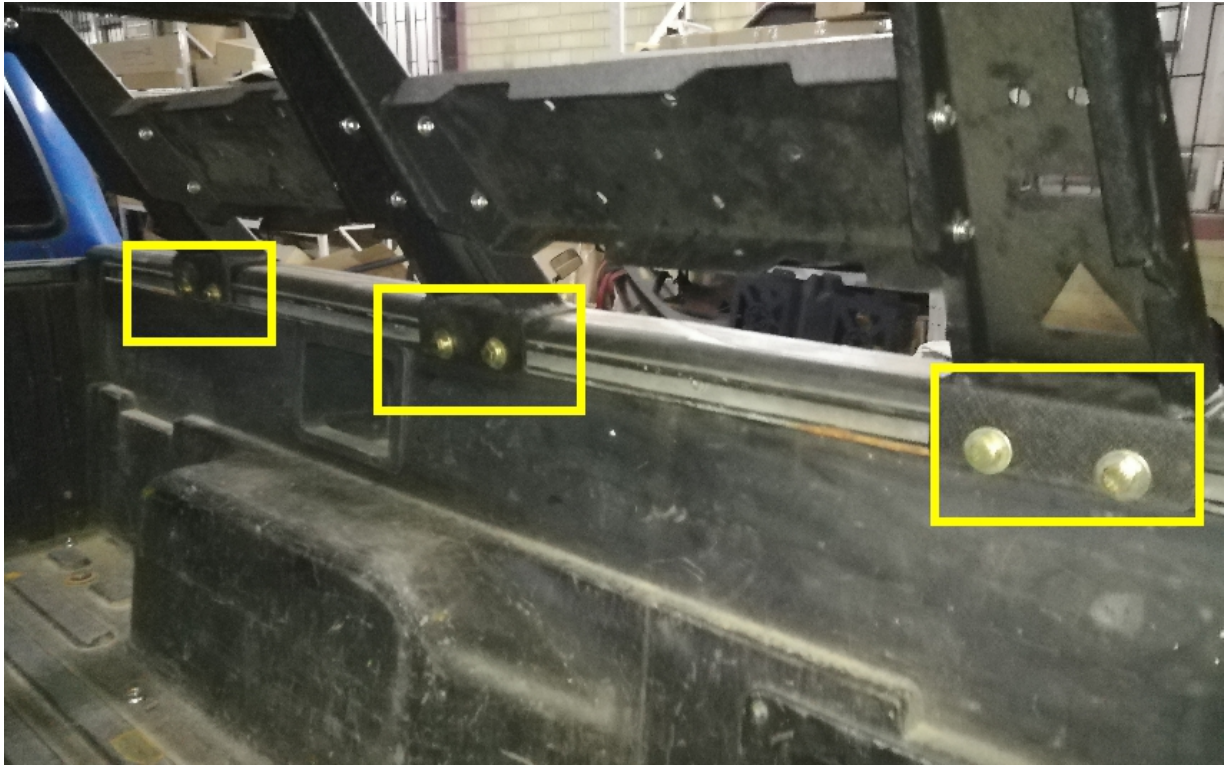
Install the PART"H" with PART"Q" & PART"R" to tighten the Bed Rack.



### Step 8:

Install the passenger side in the same method.





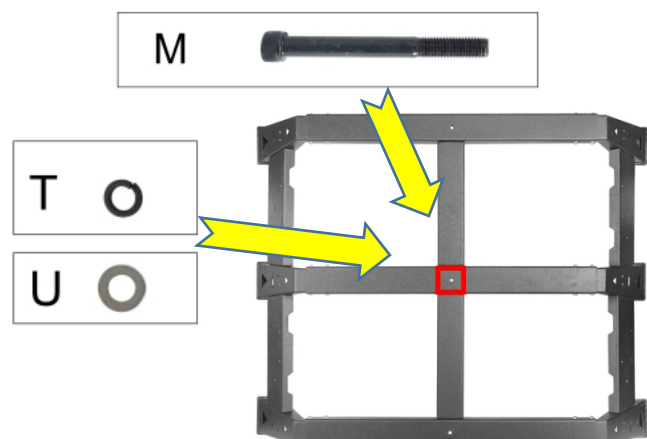
Step 9:

Installation completed.

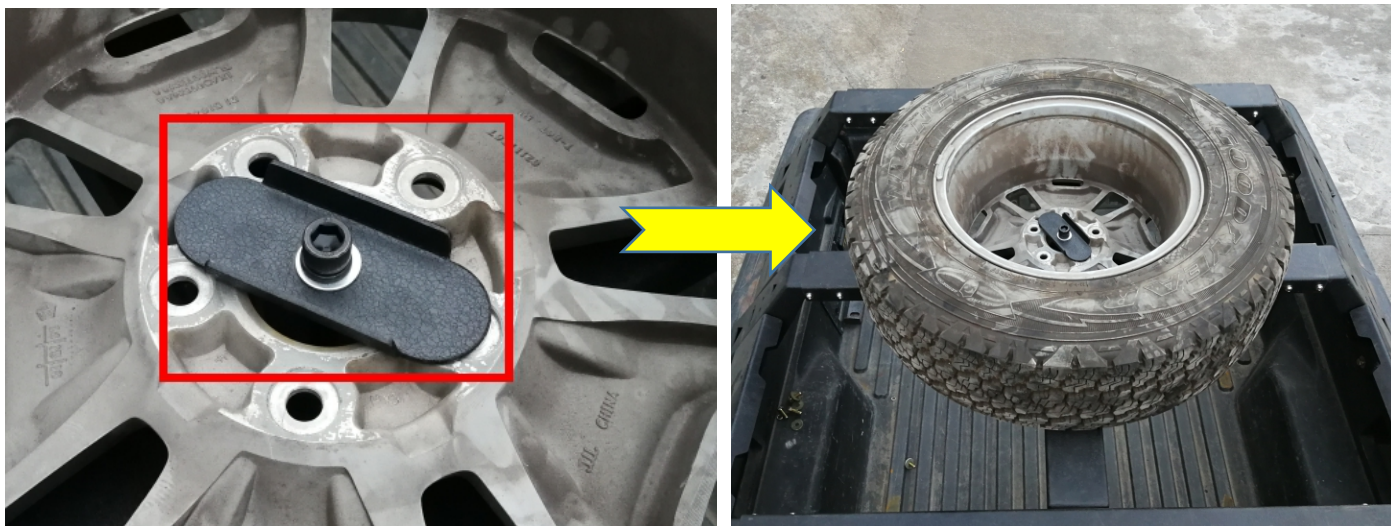


## **Attention 2:**

**The PART "M", PART "T",  
PART "U" are use for install  
the spare tire.**

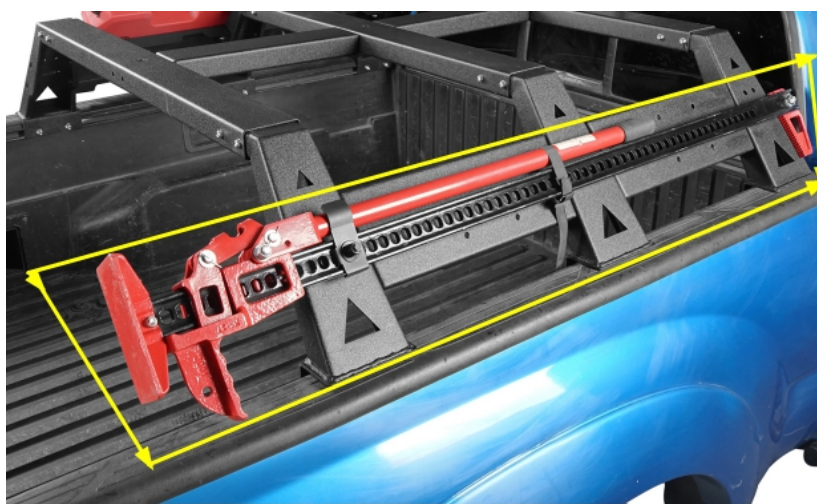
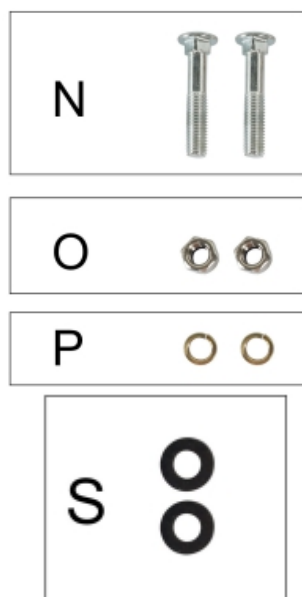






### **Attention 3:**

**The PART"N",PART"O", PART"P" & PART"S" are use for install the JACK. As shown below.And if no need to install the JACK.Then just forget it or keep it in somewhere.**



## **Attention 4:**

**1.The product parts in this instruction may differ slightly from the actual product contents but generally does not affect the installation of the product.**

**2.Please feel free to contact your distributor if you have any kind of question about your purchase.**