



CHROME WINDOW TRIM

(2024-2025+ TACOMA - DOUBLE CAB)

INSTALLATION INSTRUCTIONS

CONTENTS

- (1) LH Upper Rear Door Trim
- (1) RH Upper Rear Door Trim
- (1) LH Lower Rear Door Trim
- (1) RH Rear Lower Door Trim
- (1) LH Front Lower Door Trim
- (1) RH Front Lower Door Trim
- (6) Alcohol Prep Pads
- (6) Adhesion Promoter Prep Pads

TOOLS REQUIRED

N/A

STEP 1



Lay out the included window trim components. Test fit each window trim panel to the vehicle to familiarize location and fitment.

STEP 2



Beginning at the rear of the door window trim, clean the vertical panel using (1) alcohol prep pad and allow to fully dry. Then, clean the vertical panel using (1) adhesion promoter prep pad and allow to fully dry.

Peel the red tape backing from the trim panel. Align, press the trim panel to the window trim to the vehicle. Apply firm, even pressure to ensure proper adhesion.

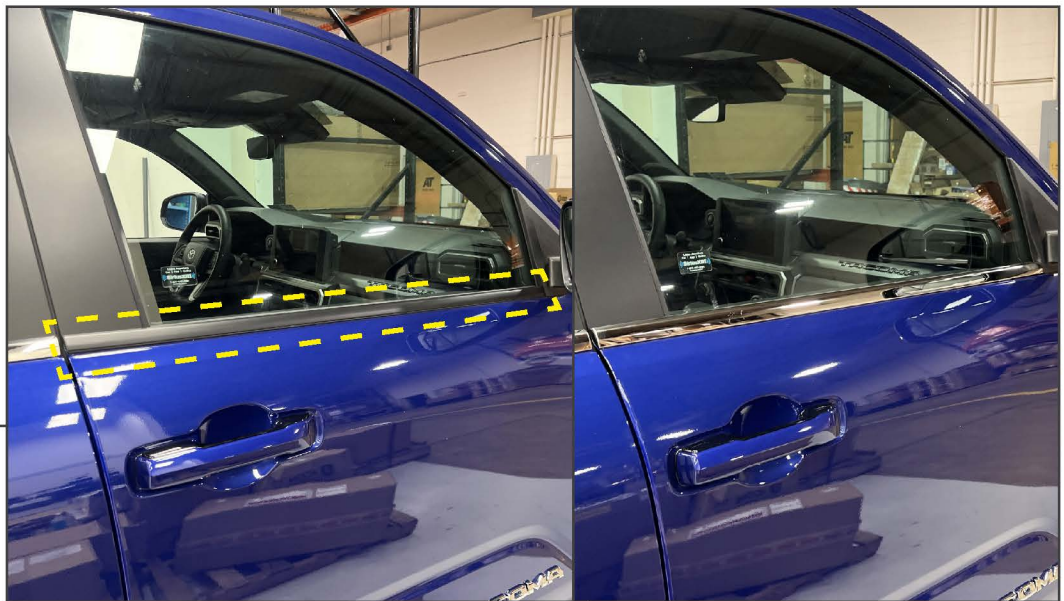
STEP 3



Clean the lower rear window trim using (1) alcohol prep pad and allow to fully dry. Then, clean the window trim using (1) adhesion promoter prep pad and allow to fully dry.

Peel the red tape backing from the trim panel. Align, press the trim panel to the window trim to the vehicle. Apply firm, even pressure to ensure proper adhesion.

STEP 4



Clean the lower front window trim using (1) alcohol prep pad and allow to fully dry. Then, clean the window trim using (1) adhesion promoter prep pad and allow to fully dry.

Peel the red tape backing from the trim panel. Align, press the trim panel to the window trim to the vehicle. Apply firm, even pressure to ensure proper adhesion.

STEP 5



Repeat Steps 1-4 for the opposite side of the vehicle.

Installation is now complete.