

PROVEN GROUND



LOCKING ROLL-UP TONNEAU COVER

INSTALLATION INSTRUCTIONS

CONTENTS

- (2) Red Rail Channels
- (1) Locking Roll-Up Tonneau Cover
- (6) Rail Clamps

TOOLS REQUIRED

- 4, 5mm Allen Wrench
- Phillips Head Screwdriver

STEP 1



Place the rails on either side of the bed. Note the orientation of the locking portion of the rail shown.

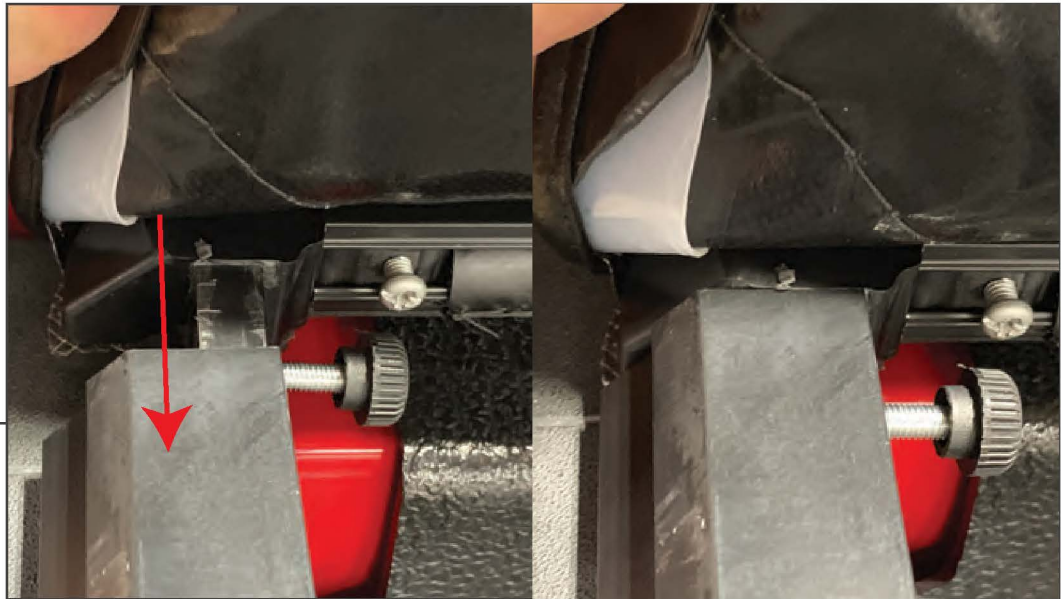
STEP 2



Space the rail clamps evenly over the distance of the bed rail. Tighten the clamps enough so that they are secure but leave them loose enough that you can move the rail forward/backward.

**For vehicles with utility rails, see the last page of the install guide.

STEP 3

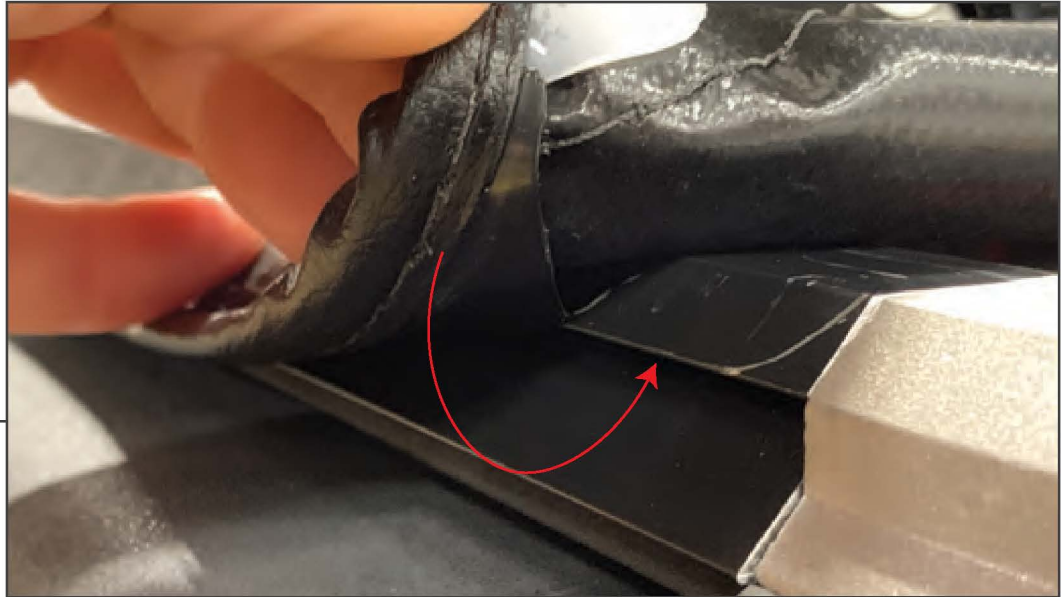


Slide the tonneau cover into the rails at the front of the bed. The plastic portion slides into the bed rails on both sides of the vehicle. Use the thumb screw to secure the tonneau cover to the rails.

STEP 4



Position the bracing into the notches on the side rails. They are marked (F) Front, (M) Middle, and (R) for the Rear.



STEP 5

Fold the tonneau cover out towards the rear of the vehicle. The black plastic portion of the tonneau cover clips into the outer edge of the rail. Hook the cover into the rails. Work from the front to the back on both sides.



STEP 6

Clip the end of the tonneau cover into the locking portion of the rail. This may require you to move the rails side-to-side and front-to-back. Once the rails are square and the cover locks into place, carefully pull the release cable located at the center of the tonneau cover to release it from the locks. Fold back the cover and tighten all clamps.



STEP 7

When the tonneau cover is not in use, fold back the tonneau cover. Remove the center support bars and use the nylon straps to lock the cover in position.



**Factory Utility
Rails**

For vehicles with factory bed rails, remove the rail end caps and install the supplied utility rail clamps. There are several styles of clamps (2) are shown above. Follow the Steps 3-7 once the clamps are installed.