



ALUMINUM ROOF RACK

(2024+ TACOMA - DOUBLE CAB)

INSTALLATION INSTRUCTIONS

CONTENTS

(1) LH Side Rail
(1) RH Side Rail
(4) Mounting Brackets [L1, L2, R1, R2]
(6) T-Slot Bars
(1) Front Panel
(4) 7mm Spacers
(8) M6x1.00 x 30mm Hex Bolts
(4) M6x1.00 x 20mm Button Allen Bolts
(8) M6 Lock Washers
(16) M6 Flat Washers
(4) M6 Lock Nuts
(8) M6 Rubber Flat Washers
(10) M8x1.25 x 14mm Eyelets
(36) M8x1.25 x 16mm Button Allen Bolts
(12) M8x1.25 x 25mm Button Allen Bolts
(86) M8 Flat Washers
(52) M8 Lock Washers
(12) M8 Lock Nuts
(18) M8 T-Slot Nuts
(1) Front Panel Weatherstripping

TOOLS REQUIRED

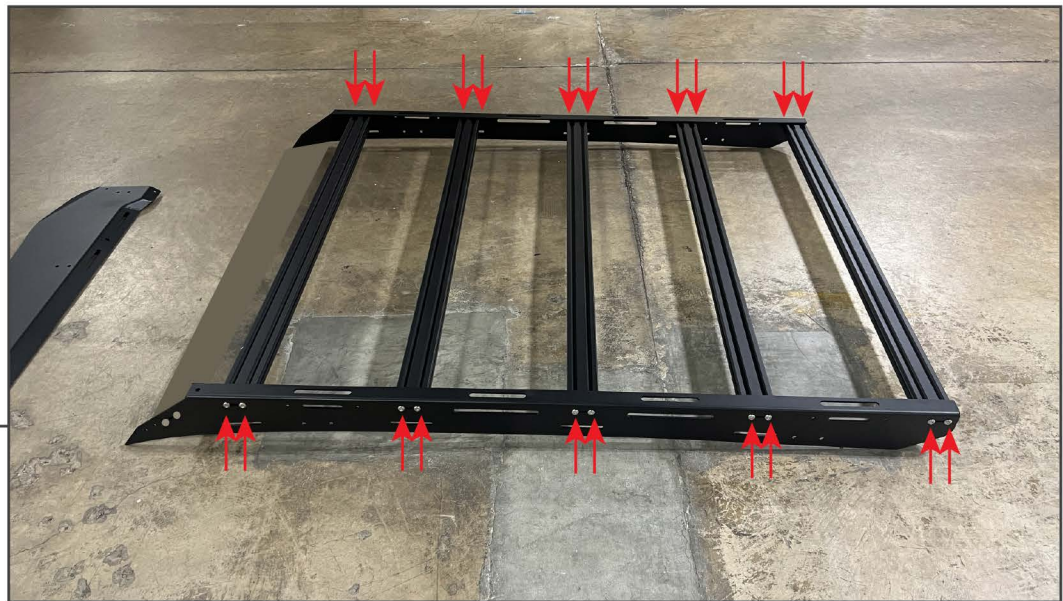
10mm Socket/Wrench
4mm, 5mm Allen Keys/Sockets
Ratchet
Plastic Pry Tool
Razor Knife

STEP 1



Lay out and identify all roof rack components.

STEP 2



Fit the (5) cross bars between the LH and RH side rails. Then, secure the cross bars to both side rails using (20) M8 x Allen 16mm bolts, (20) M8 lock washers, and (20) M8 flat washers. Tighten evenly until secure.

Note: Ensure the T-Slot opening is facing upwards on the cross bars to allow for T-Slot nuts to be installed/removed.

STEP 3



With the remaining (1) T-Slot bar, place the bar on a workable surface with the rectangular T-Slot opening facing down. Then, slide the included (8) T-Slot nuts into the end of the T-Slot bar and route each T-Slot nut to the (8) bolt holes in the front panel. Secure the T-Slot bar to the front panel using (8) M8 x 16mm Allen bolts, (8) M8 lock washers, and (8) M8 flat washers.

Note: It is recommended to roughly place the T-Slot nuts at the approximately location of the front panel bolt holes. Use a small pick to aid alignment if necessary.

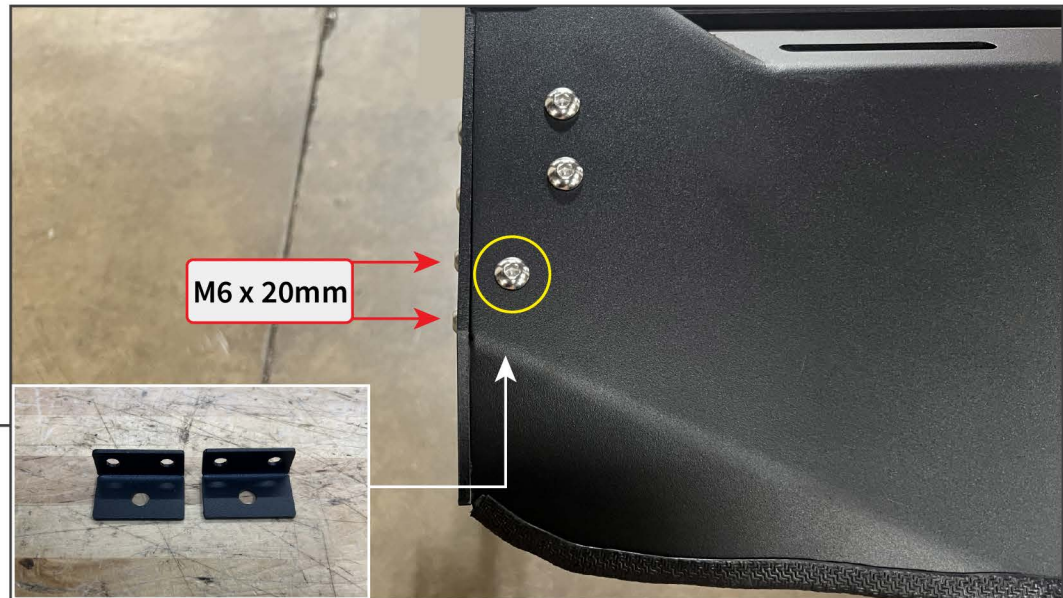
STEP 4



Fit the front panel to the roof rack using (8) M8 x 16mm Allen bolts, (8) M8 lock washers, and (8) M8 flat washers.

Secure the top of the front panel to the top of the side rails using (2) M8 x 25mm Allen bolts, (4) M8 flat washers, and (2) M8 lock nuts.

STEP 5



Fit (1) “L” bracket behind the front panel, and secure using (2) M6 x 20mm Allen bolts, (4) M6 flat washers, and (2) M6 lock nuts to the side rail. Then, secure the “L” bracket to the front panel using (1) M8 x 25mm Allen bolt, (2) M8 flat washers, and (1) M8 lock nut.

STEP 6

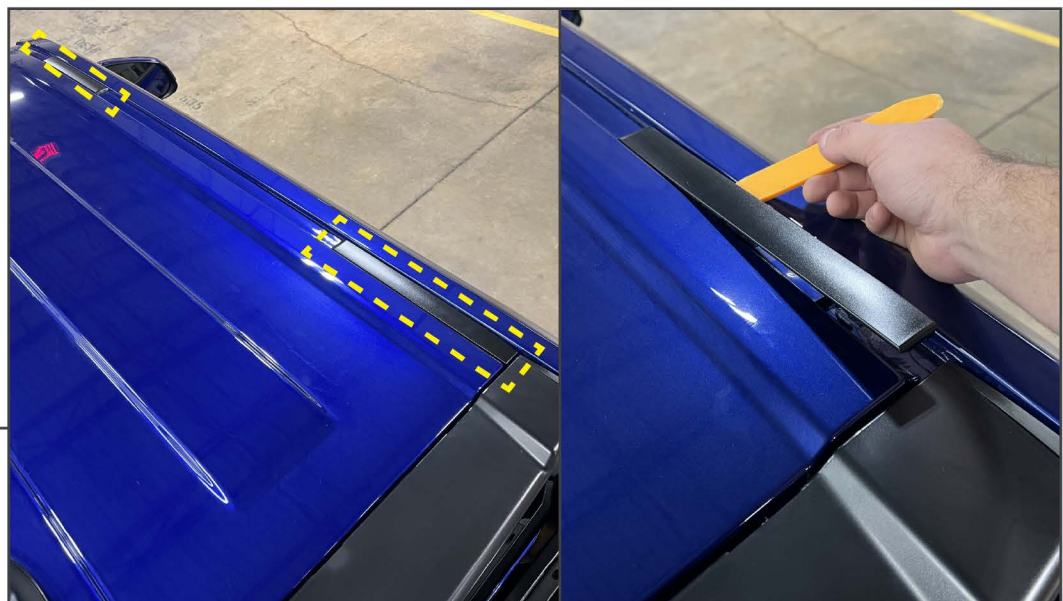


Fit the included weatherstripping to the bottom of the front edge. Trim the excess material using side cutters, if necessary.



STEP 7

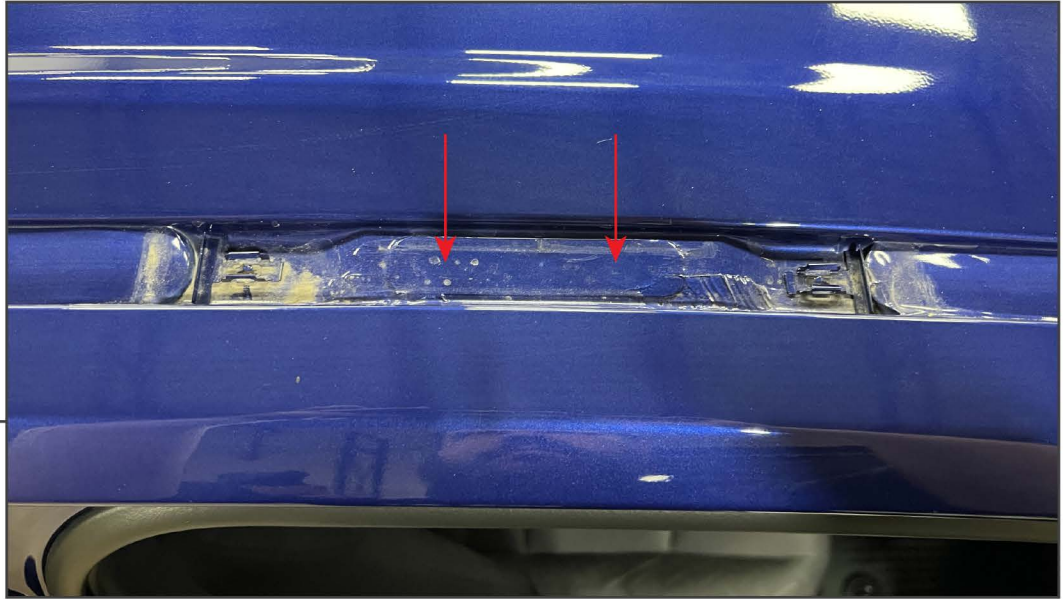
Identify the included mounting brackets using the diagram above. Mount the appropriate mounting bracket to the inside of the side rails using (2) M8 x 25mm Allen bolts, (4) M8 flat washers, and (2) M8 lock nuts per bracket. The brackets will face inwards on the roof rack.



STEP 8

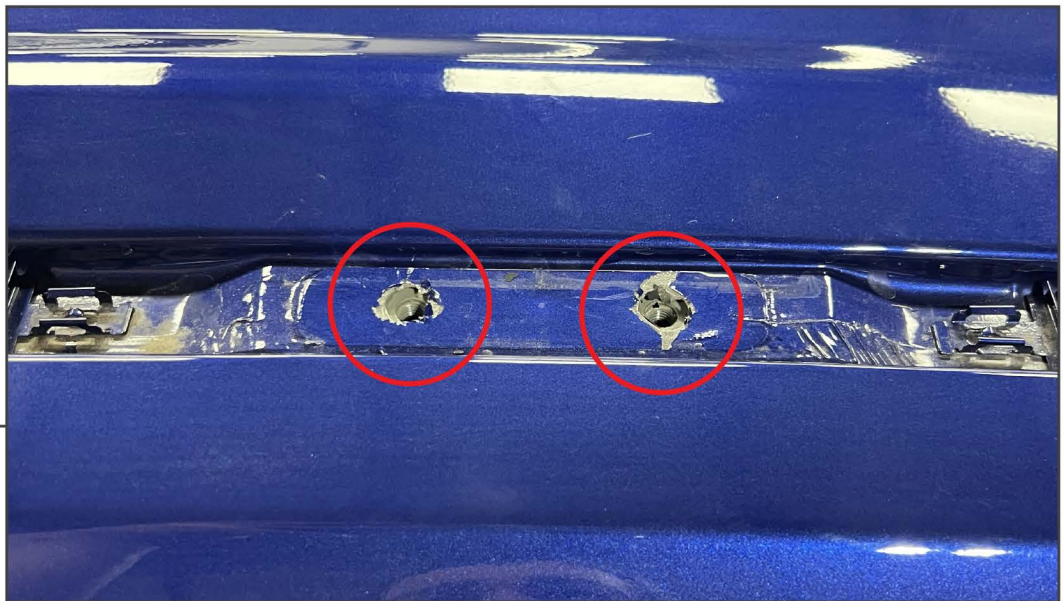
Above the vehicle doors along on the roof, locate the (2) plastic covers per side. Using a plastic panel removal tool, lift the covers away from the vehicle.

STEP 9



Under the plastic cover is painted double sided tape. Press the tape downwards to locate the bolt holes under the tape.

STEP 10



Using a razor knife, carefully cut a circle to reveal the threaded holes in the vehicle roof.

With the threaded holes accessible, place (1) roof rack spacer above the bolt holes. Ensure the bolt holes in the spacer align with the vehicle bolt holes.

STEP 11

Place (1) rubber flat washer around each vehicle roof bolt hole. Then, place (1) 7mm spacer on top of the rubber flat washers.

STEP 12

With a helper, lift the roof rack onto the roof of the vehicle. Adjust and secure the roof rack into place using (8) M6 x 30mm Hex bolts, (8) M6 lock washers, and (8) M6 flat washers.



STEP 13

If desired, use the included (10) M8 Eyelets, (10) M8 lock washers, (20) M8 flat washers, and (10) M8 T-Slot nuts to allow the roof rack to secure items. The eyelets require (2) flat washers per eyelet for adequate spacing.

Ensure all hardware is tight and secure.

Installation is now complete.