

BARRICADE

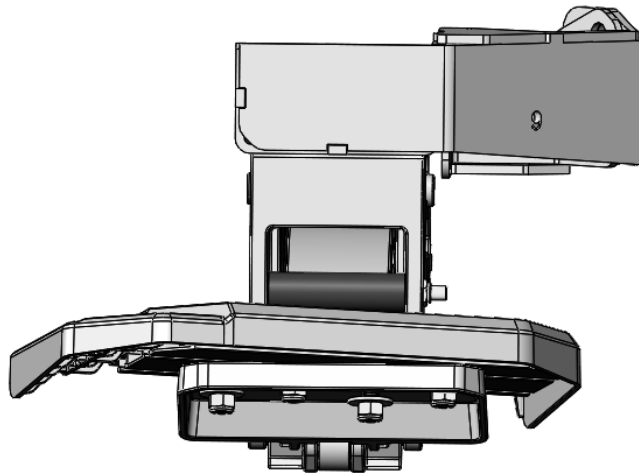
INSTALLATION INSTRUCTIONS

**Manual Corner Step / 16-23 Tacoma
SKU # TT62072**

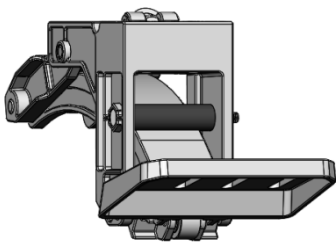
INSTALLATION INSTRUCTIONS

PARTS LIST:

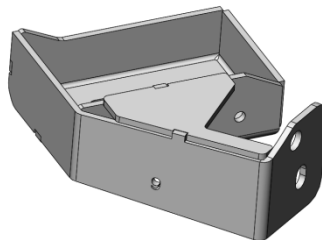
Name	QTY
Corner step linkage arm base component	1
Step pad (Newest)	1
Frame mounting bracket	1
Support bracket	1
8-1.25mm x 25mm Combo bolts	4
8mm Lock washer	1
8-1.25mm x 20mm Hex Bolt	1
8mm Nylon Lock Nuts	4
8mm x 24mm x 2mm Flat washers	5
8-1.25mm x 20mm T-Bolt	4



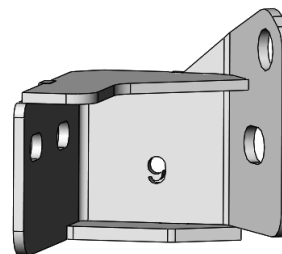
Linkage Arm Assembly



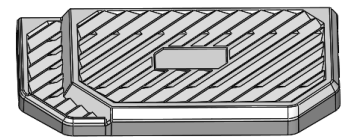
Frame mounting bracket



Support Bracket



Step Pad



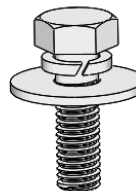
Lock Washer



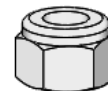
Flat Washer



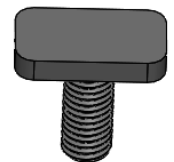
Hex Bolt



Combo Bolt



Lock Nut



T-Bolt

TOOLS REQUIRED



Ratchet

13mm Socket
17mm Socket

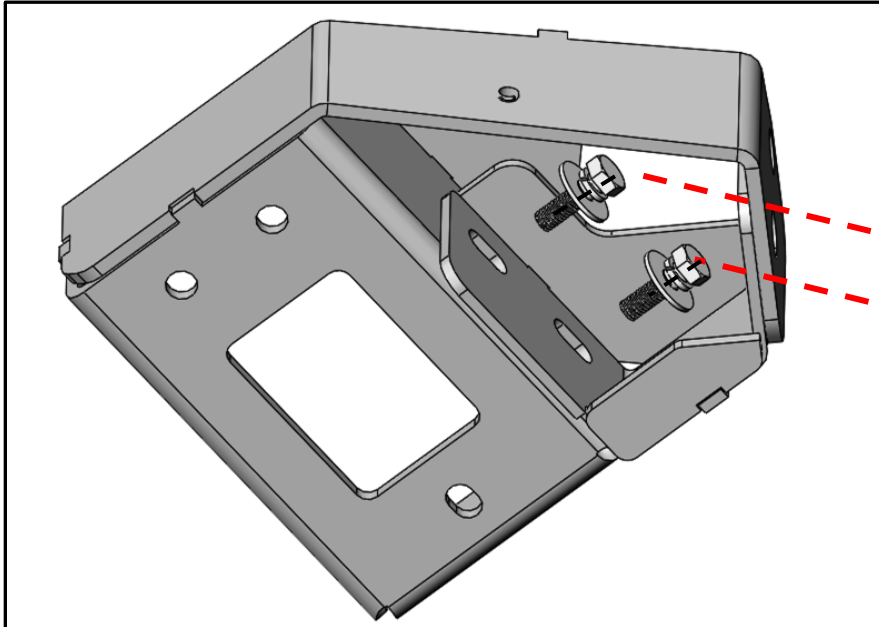
Extensions



Wrench

1

Follow (Fig 1) to combine the mounting bracket to the support bracket. **Do not fully tighten hardware at this time.**

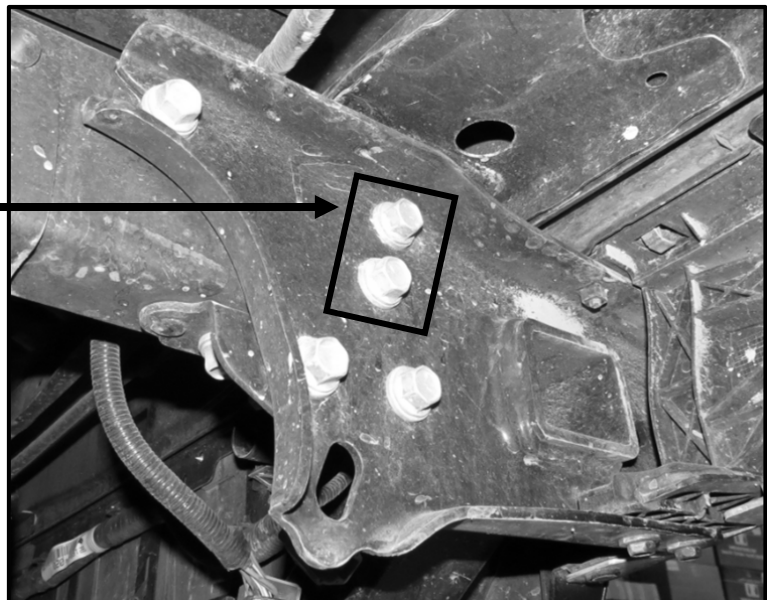


(Fig 1) Combine the support bracket to the frame mounting bracket

2

Follow (Fig 2 – 3) to install the mounting bracket & support bracket to the frame of the vehicle.

(Fig 2) Starting at the rear DS remove the (2) OEM 17mm hex nuts

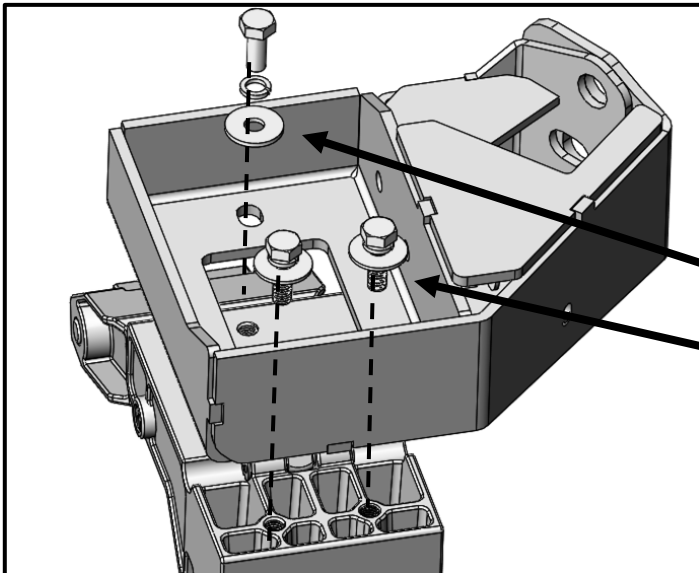




(Fig 3) Mount the combined brackets to the vehicle reusing the 17mm OEM bolts

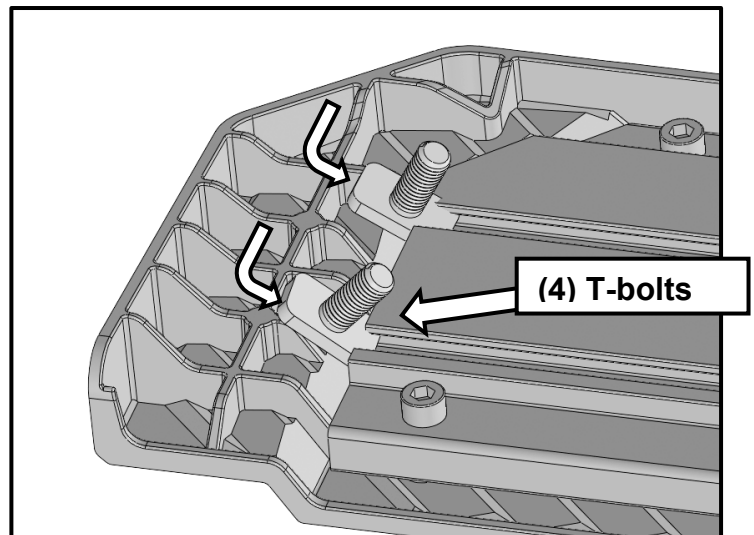
3

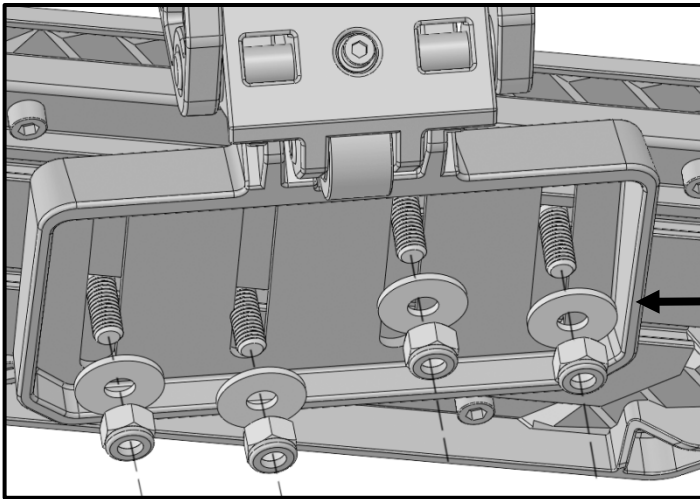
Follow (Fig 4-7) to install the rest of the linkage arm assembly to the mounting bracket. Once finished, **Tighten all hardware at this time to the preferred position.** Do periodic inspections to the installation to make sure that all hardware is secure and tight.



(Fig 4) Mount the frame & support bracket to the linkage arm assembly

(Fig 5) Slide in T-bolts through open ends of the channels underside of Step Pad (two T-bolts per channel)





(Fig 6) Attach Step Pad to Corner Step Base

(4) 8mm Flat Washers
(4) 8mm Nylon Lock Nuts

(Fig 7) The step pad can be adjusted to the user liking



Complete Installation

Note: Excess dirt & debris may prevent from functioning properly. Simply clean the dirt off with after periodically to maintain optimal condition of corner step.