

FRONT BUMPER MOUNTED 30-INCH LED LIGHT BAR AND BRACKET

(2005-2015 TACOMA)

INSTALLATION INSTRUCTIONS

CONTENTS

- (1) 30" LED Light Bar
- (1) Wiring Harness
- (1) LH Mounting Bracket
- (1) RH Mounting Bracket
- (2) M8x1.25 x 20mm Allen Bolts
- (2) M8x1.25 x 20mm Hex Bolts
- (2) M8 Lock Washers
- (4) M8 Flat Washers
- (2) M8 Spacers
- (1) 6mm Allen Key

TOOLS REQUIRED

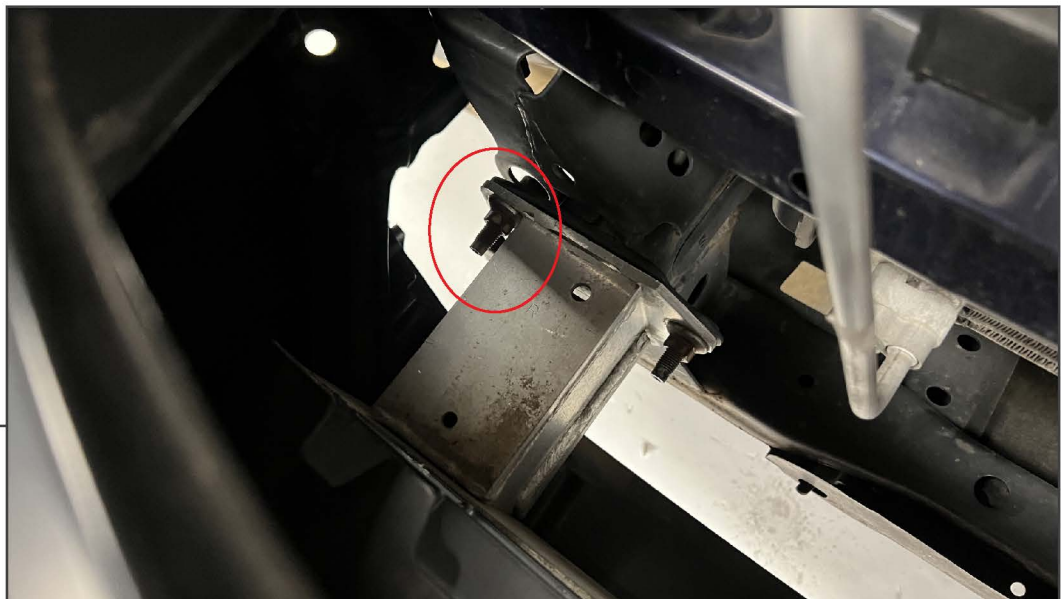
- 10, 13, 14mm Socket/Wrench
- Ratchet
- 6mm Allen Key
- Small Pry Tool
- Side Cutters
- Rotary Tool

SKU # TT62071



STEP 1

Remove (2) 10mm screws and (2) plastic push clips from the top of the grille. Lift the center tabs, and remove the grille from the vehicle.

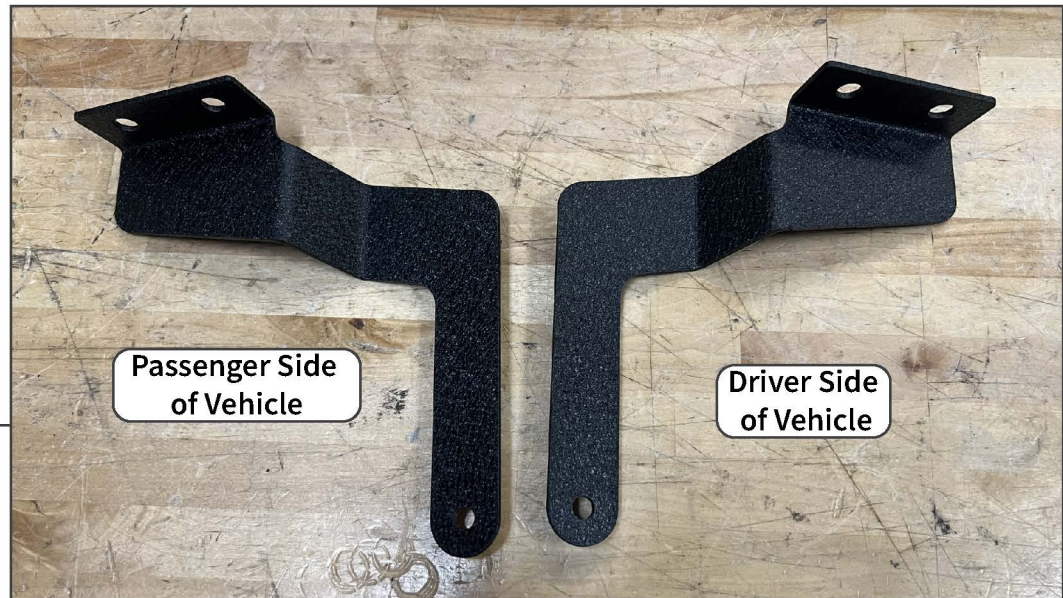


STEP 2

Locate the aluminum bumper attached to the frame. Remove the (2) outer 14mm nuts from the aluminum bumper.

Repeat this step for the opposite side of the vehicle.

STEP 3



Identify the LH and RH mounting brackets using the diagram above.

STEP 4



Secure the appropriate light bar mounting brackets to the vehicle bumper mounting point, and secure into place using the original (2) 14mm nuts.

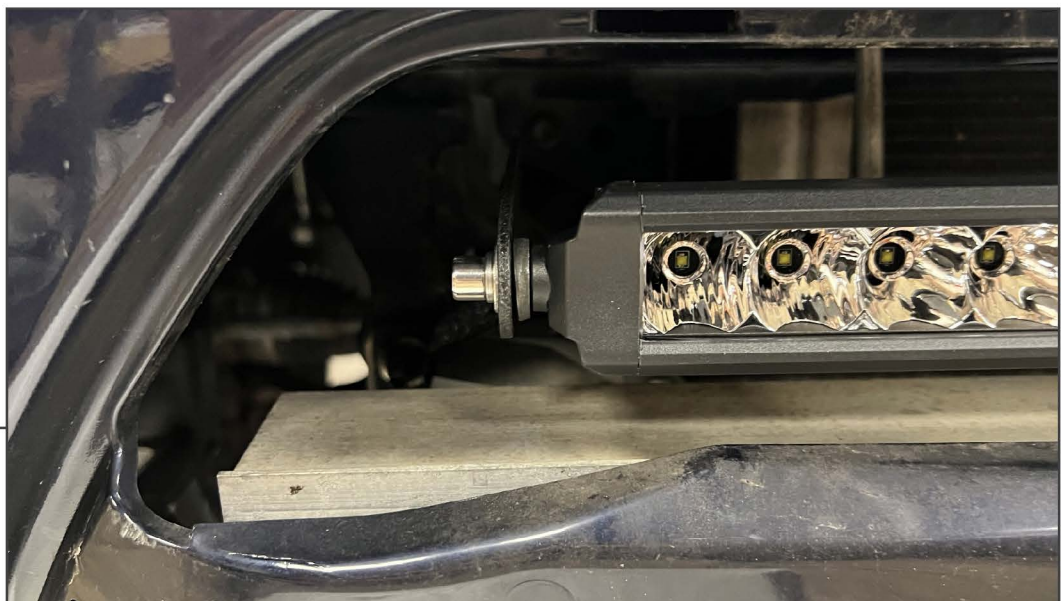
Note: If necessary, loosen the inner bumper mounting nuts to allow the bumper to adjust to best fit the brackets.



STEP 5

2005-2011 vehicles: Trim the grille section of the lower trim panel to allow light bar clearance.

2012-2015 vehicles: Trim the grille section of the lower trim panel initially, and check light bar clearance. If the light bar/brackets interfere with the lower trim panel, trim the panel as necessary to fit the light bar/brackets.



STEP 6

Fit the light bar to the brackets, ensuring the wire lead is on the driver side of the vehicle.

Use the included (2) M8 Allen bolts, (2) M8 lock washers, (2) M8 flat washers, and (2) M8 spacers to loosely secure the light bar to the bracket. The spacers will fit between the light bar and the bracket.

Note: If necessary, use the included M8 Hex bolts in place of the Allen bolts.

STEP 7



Carefully route the wiring harness across the vehicle.

- Plug the light bar into the harness connector.
- Route switch into vehicle through suitable firewall grommet. Secure switch to dashboard.
- Connect Red ring terminal to battery +.
- Connect Black ring terminal to battery -.
- Mount relay to a secure location.

STEP 8



Test the light bar, and adjust the light bar for best lighting output. Tighten the light bar adjusting hardware once properly adjusted.

Re-install the vehicle grille reusing the original hardware.

Installation is now complete.