



3-INCH SINGLE TURN DOWN EXIT STAINLESS STEEL CATBACK EXHAUST SYSTEM

(2004-2015 TACOMA)

INSTALLATION INSTRUCTIONS

CONTENTS

- (1) Front Pipe
- (1) Intermediate Pipe
- (1) Muffler w/ Turn Down
- (1) 3" Exhaust Clamp
- (1) 3" Hanger Clamp

TOOLS REQUIRED

- 14mm, 15mm Sockets
- Ratchet
- Pry Bar
- Spray Lubricant
- Floor Jack
- Jack Stands

SKU # TT49900



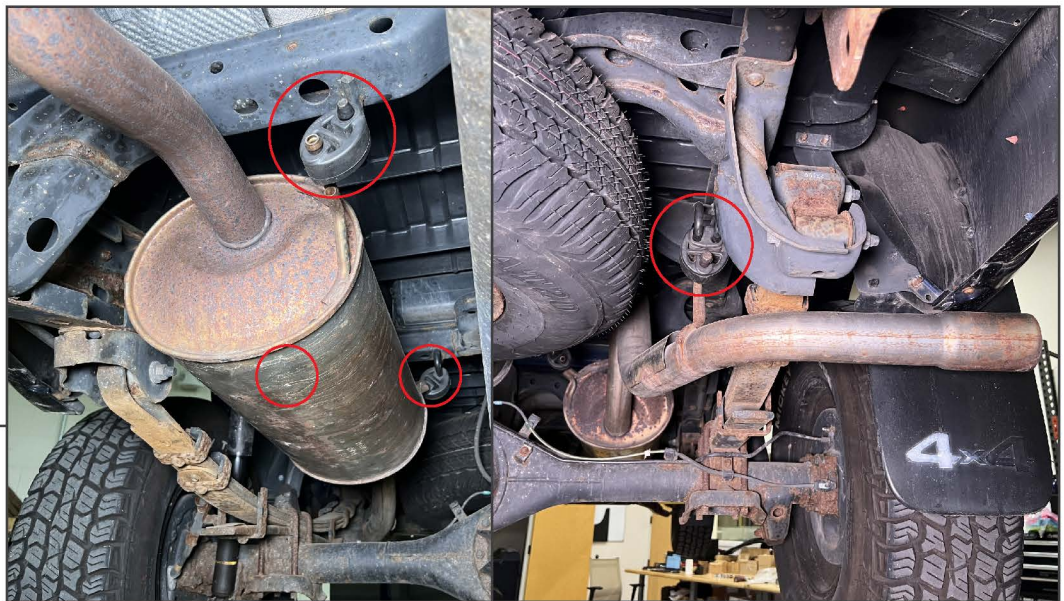
STEP 1



Safely lift and support the vehicle off the ground using a floor jack and jack stands. Locate the vehicle exhaust flange towards the front of the vehicle. Remove (2) 14mm spring bolts from the exhaust flange.

Note: OEM hardware and gasket will be reused.

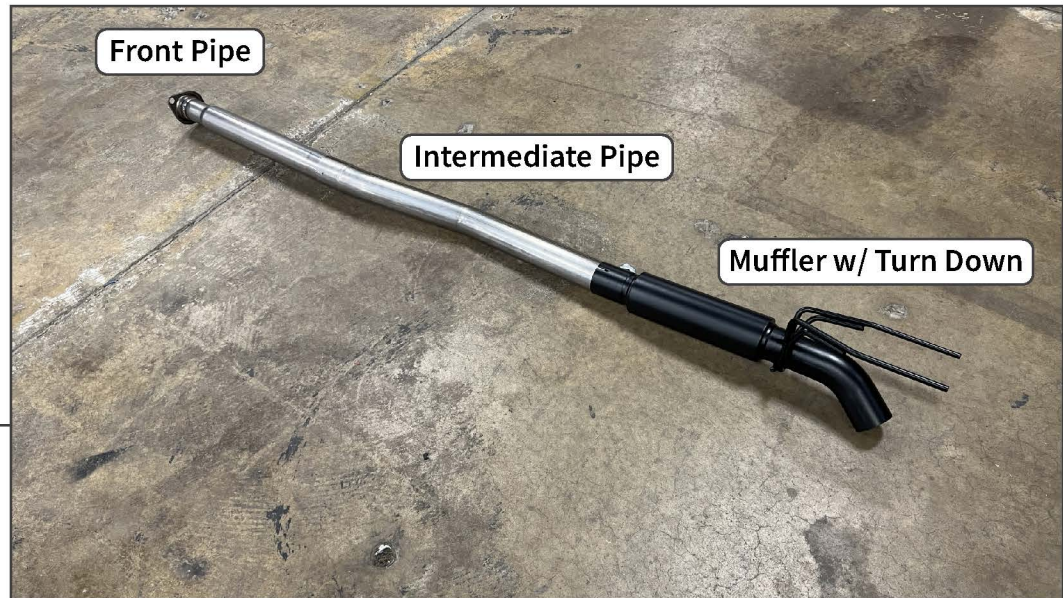
STEP 2



Remove the vehicle exhaust system from the (4) rubber hangers, and remove the exhaust system from the vehicle.



STEP 3



Lay out and identify all exhaust components.

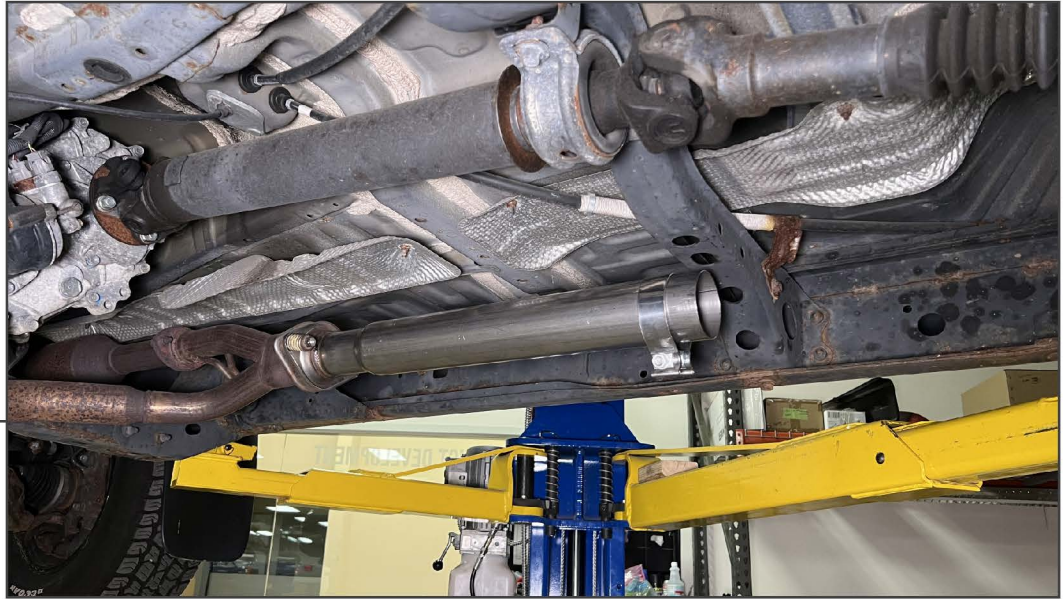
STEP 4



For Double Cab Short Bed OR Access Cab Vehicles [128in Wheelbase]: Cut 13" from the outlet side of the intermediate pipe.



STEP 5



Ensure the exhaust gasket is in place on the vehicle exhaust pipe. Fit the front pipe to the vehicle exhaust pipe, and loosely secure using the OEM (2) 14mm spring bolts.

Fit (1) 3" exhaust clamp onto the end of the front pipe to prepare for the intermediate pipe.

STEP 6



Fit the intermediate pipe to the front pipe, and loosely secure together using the previously placed (1) 3" exhaust clamp.

Loosely fit the (1) 3" hanger clamp onto the end of the intermediate pipe and through the OEM vehicle rubber hanger.



STEP 7

Fit the muffler w/ turn down onto the intermediate pipe, and loosely secure using the previously placed 3" hanger clamp. Secure the muffler assembly to the (2) OEM vehicle rubber hangers.

Adjust the exhaust for best fit, and tighten each exhaust clamp to 45 ft. lbs.

Installation is now complete.