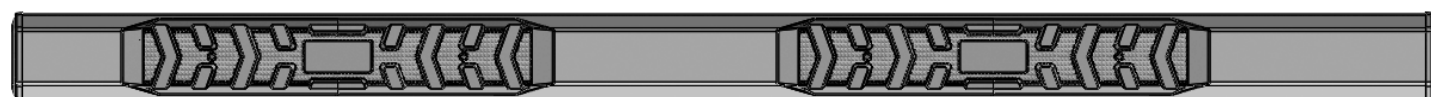
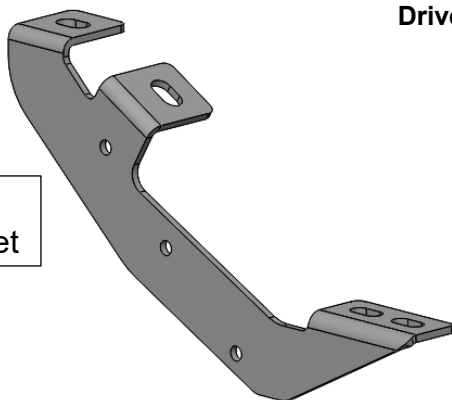
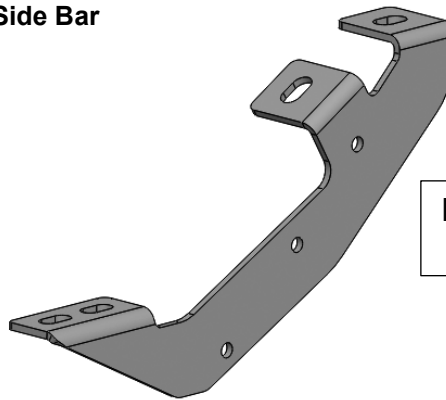
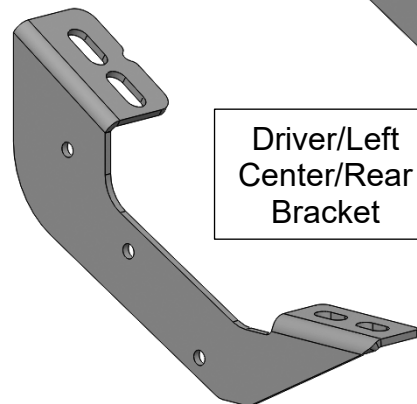
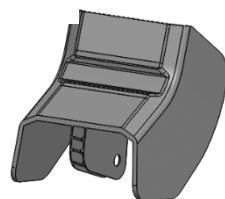
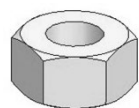
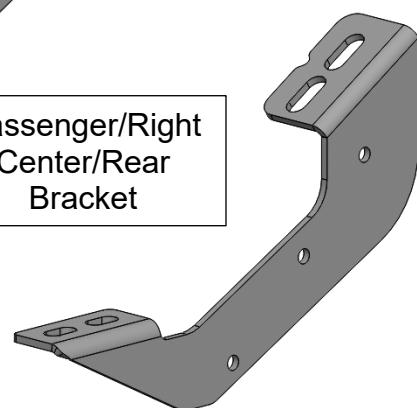


## INSTALLATION INSTRUCTIONS

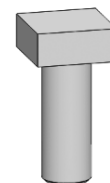
**PARTS LIST:**

Qty	Item Description	Qty	Item Description
1	Driver/Left SE5 Side Bar (76in)	12	Cover Retaining Pins
1	Passenger/Right SE5 Side Bar (76in)	12	8-1.25mm x 20mm T-bolts
1	Driver/Left Front Mounting Bracket	12	8-1.25mm x 30mm Hex Bolts
1	Passenger/Right Front Mounting Bracket	24	8mm Lock Washers
2	Driver/Left Center/Rear Mounting Brackets	24	8mm x 24mm OD x 2mm Flat Washers
2	Passenger/Right Center/Rear Mounting Brackets	12	8mm Hex Nuts
6	Plastic Covers		


**Front**  
**Passenger/Right Side Bar**

**Driver/Left Side Bar**
**Driver/Left  
Front Bracket**

**Passenger/Right  
Front Bracket**

**Driver/Left  
Center/Rear  
Bracket**

**Passenger/Right  
Center/Rear  
Bracket**

**Plastic Cover**

**Hex Nut**

**Lock  
Washer**

**Flat  
Washer**

**Hex Bolt**

**T-Bolt**

## TOOLS REQUIRED



Ratchet



13mm Socket



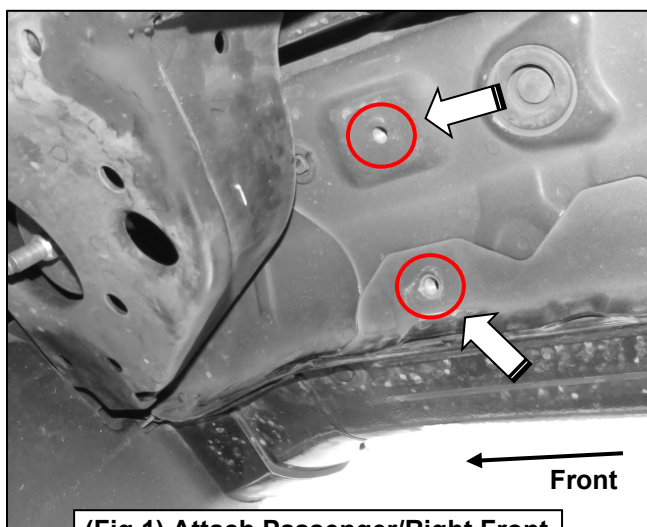
Extensions



Wrench

1

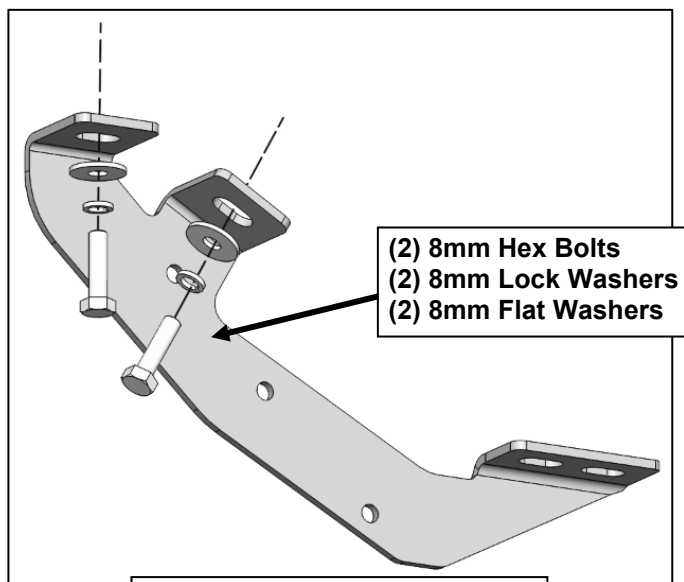
Follow (Fig 1 – 9) to attach the brackets to the Passenger Side. Repeat the following steps on the Driver Side. Ensure fasteners are only hand tight at this point.



(Fig 1) Attach Passenger/Right Front Mounting Bracket to Front threaded inserts until hand tight

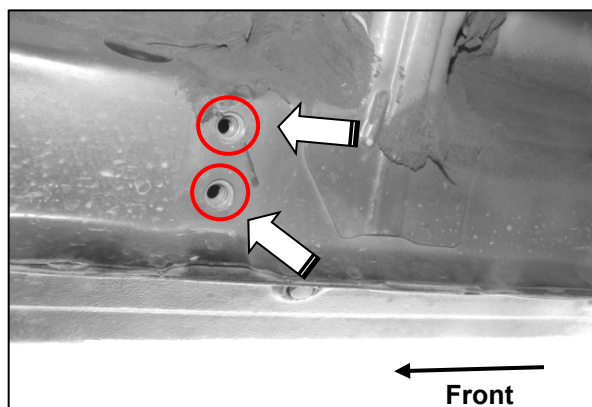


(Fig 3) Attached Passenger/Right Front Mounting Bracket at Front Mounting Location

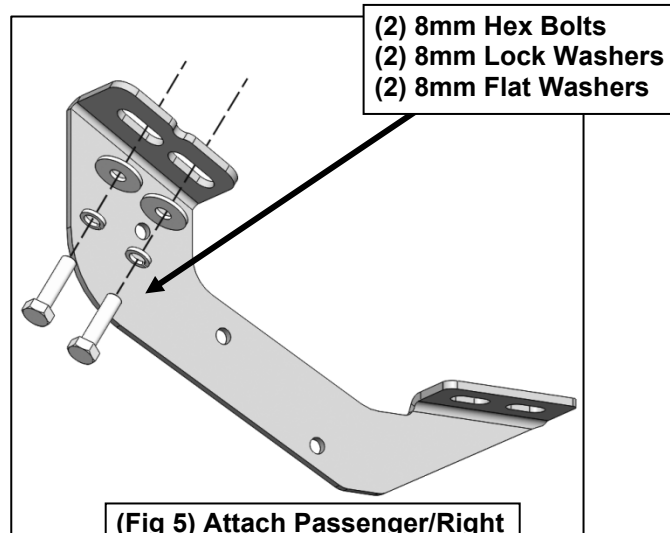


- (2) 8mm Hex Bolts
- (2) 8mm Lock Washers
- (2) 8mm Flat Washers

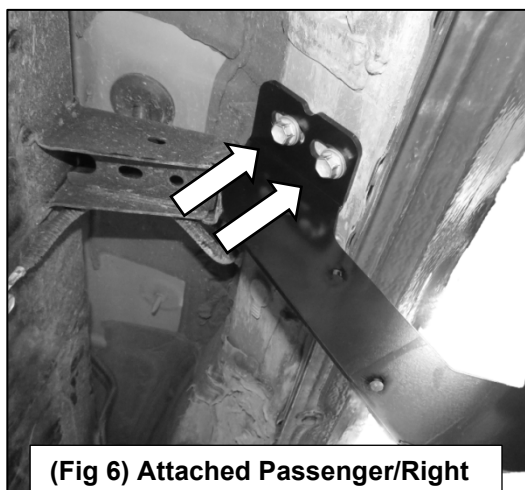
(Fig 2) Attach Passenger/Right Front Mounting Bracket



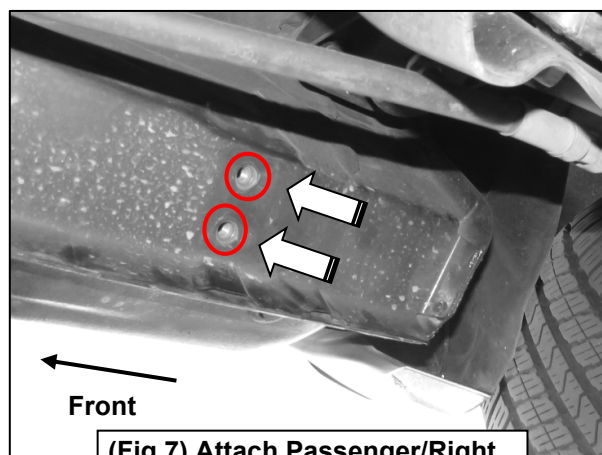
**(Fig 4) Attach Passenger/Right Center/Rear Mounting Bracket to Center threaded inserts until hand tight**



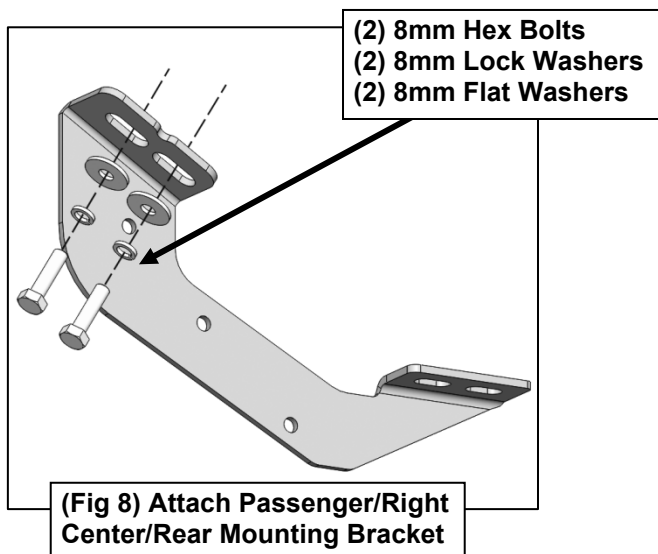
**(Fig 5) Attach Passenger/Right Center/Rear Mounting Bracket**



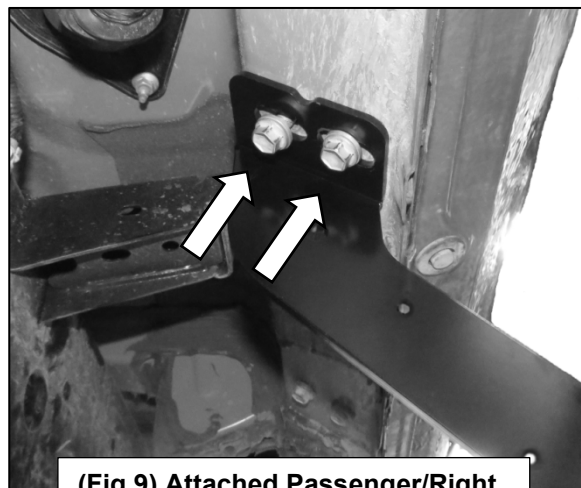
**(Fig 6) Attached Passenger/Right Center/Rear Mounting Bracket at Center Mounting Location**



**(Fig 7) Attach Passenger/Right Rear Mounting Bracket to Rear threaded inserts until hand tight**



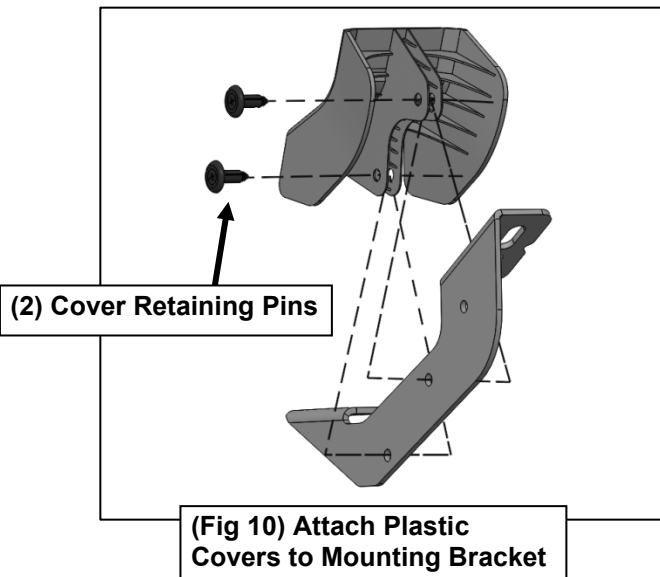
**(Fig 8) Attach Passenger/Right Center/Rear Mounting Bracket**



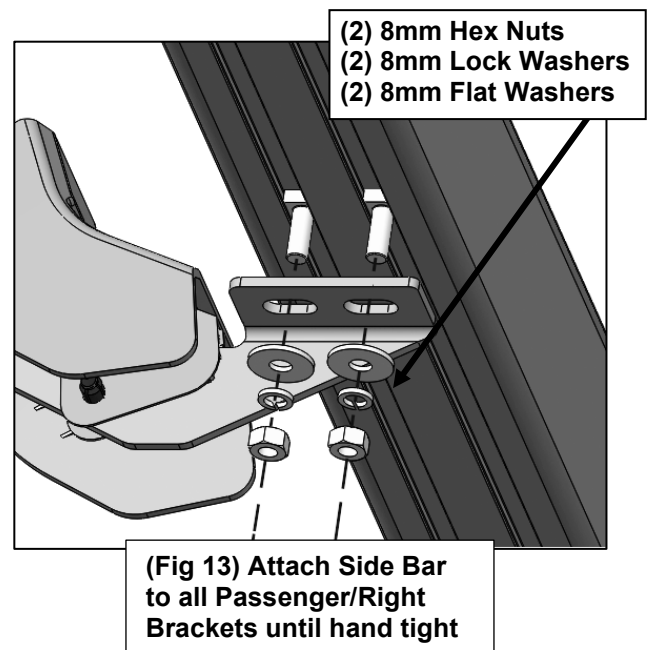
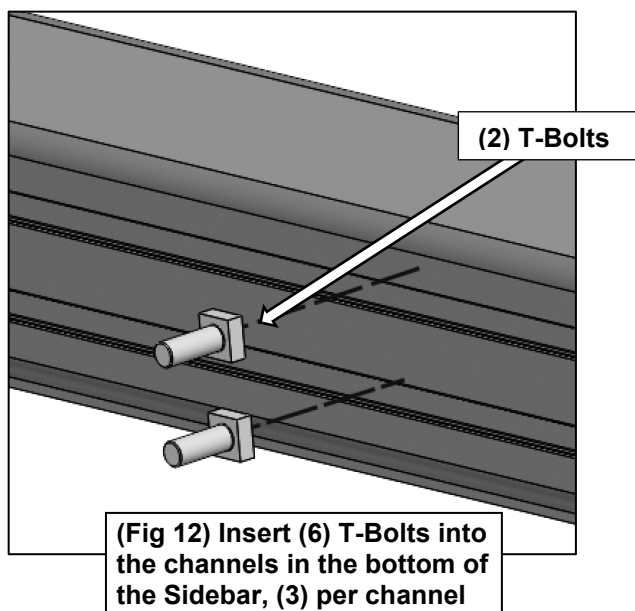
**(Fig 9) Attached Passenger/Right Center/Rear Mounting Bracket at Rear Mounting Location**

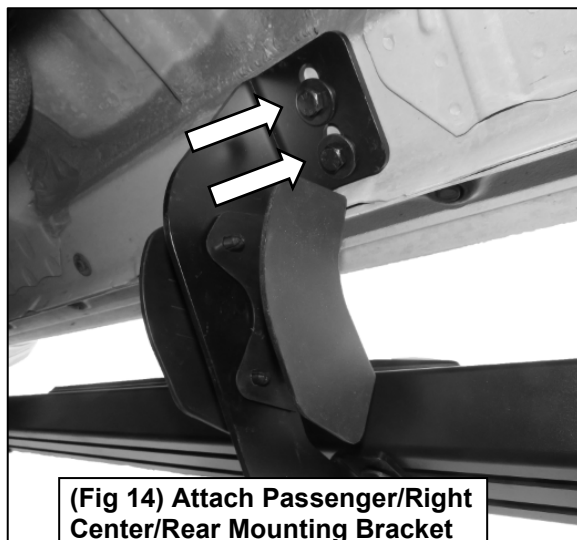
**2**

Follow (Fig 10-11) to attach the Side Bar to the Passenger Side Brackets. Repeat the following steps on the Driver Side. Ensure fasteners are only hand tight at this point.


**3**

Follow (Fig 12 – 14) to attach the Side Bar to the Passenger Side Brackets. Repeat the following steps on the Driver Side. Ensure fasteners are only hand tight at this point.

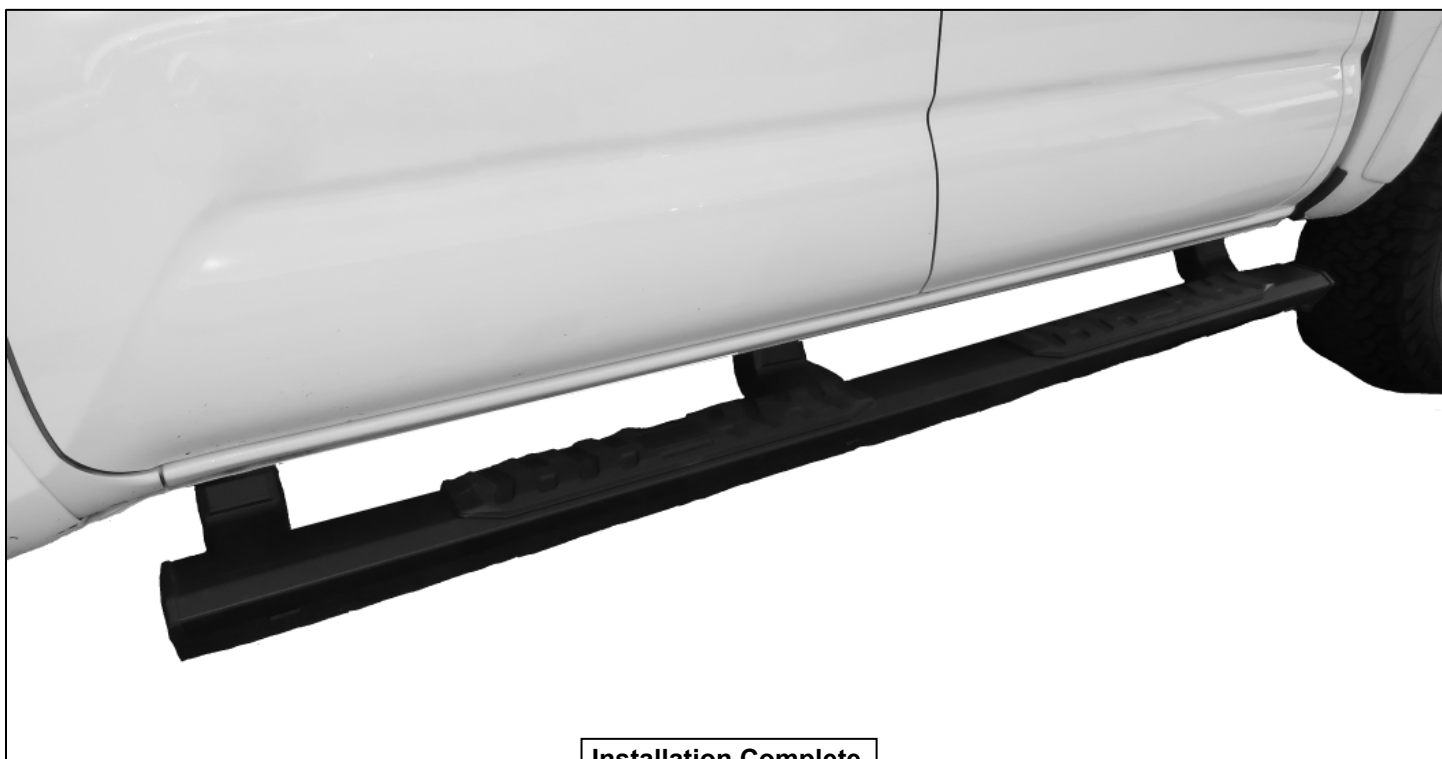




**(Fig 14) Attach Passenger/Right  
Center/Rear Mounting Bracket**

**4**

Level and straighten Side Bar, then tighten all fasteners. At this point, installation is complete. Do periodic inspections of the installation to make sure that all hardware is secure and tight.



**Installation Complete**