

INSTALLATION INSTRUCTIONS

PARTS LIST:

Qty	Item Description	Qty	Item Description
1	Driver/Left SE5 Side Bar (76in)	12	Cover Retaining Pins
1	Passenger/Right SE5 Side Bar (76in)	12	8-1.25mm x 20mm T-bolts
1	Driver/Left Front Mounting Bracket	12	8-1.25mm x 30mm Hex Bolts
1	Passenger/Right Front Mounting Bracket	24	8mm Lock Washers
2	Driver/Left Center/Rear Mounting Brackets	24	8mm x 24mm OD x 2mm Flat Washers
2	Passenger/Right Center/Rear Mounting Brackets	12	8mm Hex Nuts
6	Plastic Covers		



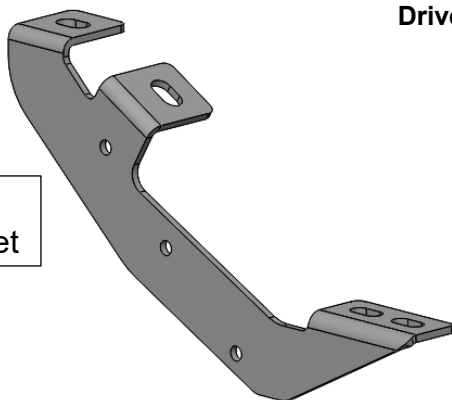
Front
←

Passenger/Right Side Bar

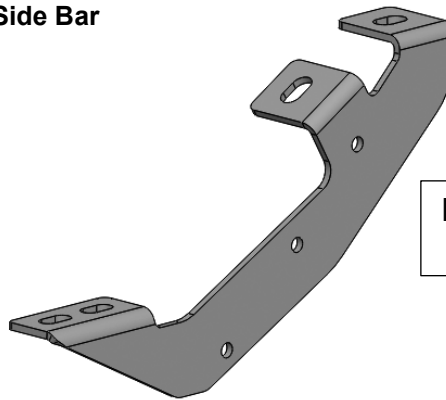


Driver/Left Side Bar

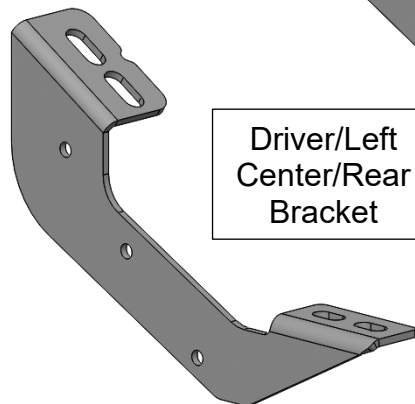
**Driver/Left
Front Bracket**



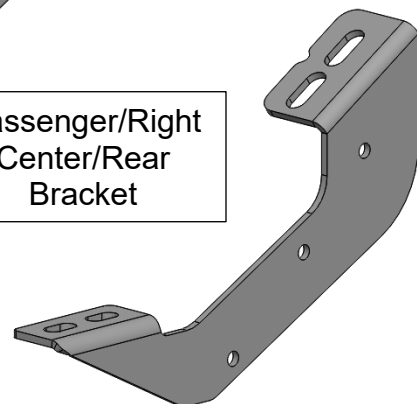
**Passenger/Right
Front Bracket**



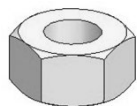
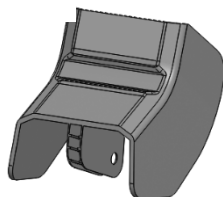
**Driver/Left
Center/Rear
Bracket**



**Passenger/Right
Center/Rear
Bracket**



Plastic Cover



Hex Nut



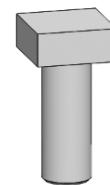
**Lock
Washer**



**Flat
Washer**



Hex Bolt



T-Bolt

TOOLS REQUIRED



Ratchet



13mm Socket



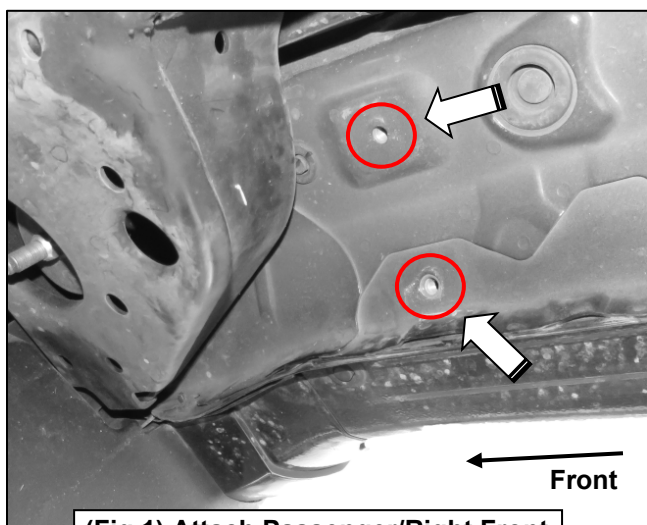
Extensions



Wrench

1

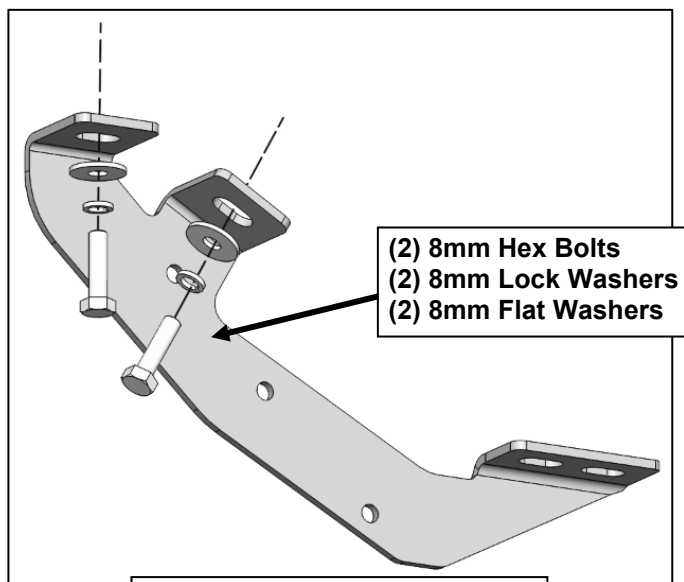
Follow (Fig 1 – 9) to attach the brackets to the Passenger Side. Repeat the following steps on the Driver Side. Ensure fasteners are only hand tight at this point.



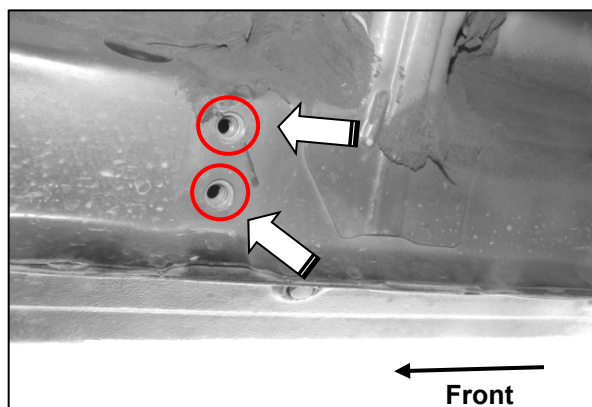
(Fig 1) Attach Passenger/Right Front Mounting Bracket to Front threaded inserts until hand tight



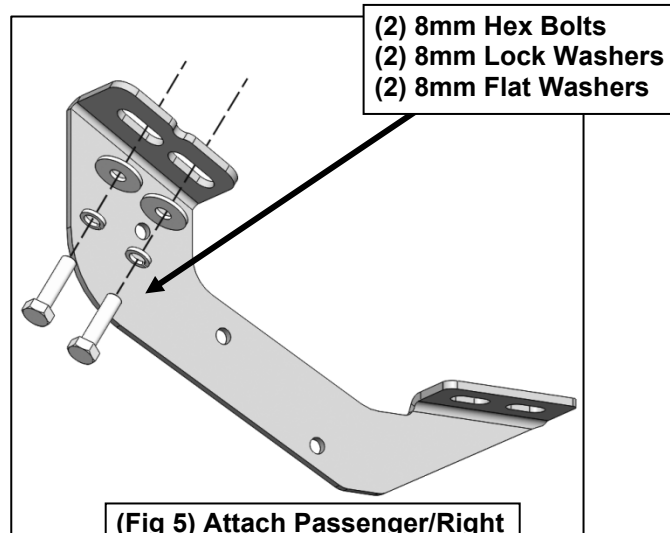
(Fig 3) Attached Passenger/Right Front Mounting Bracket at Front Mounting Location



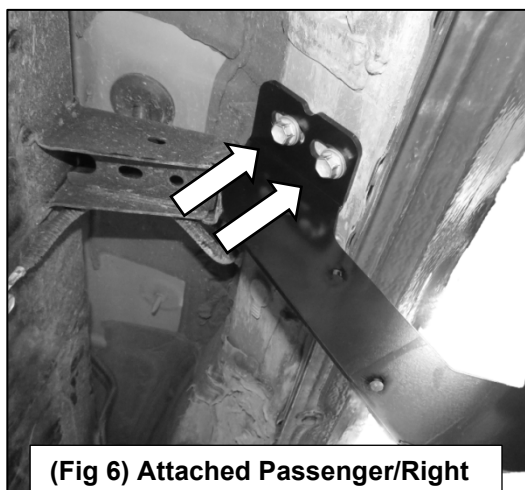
(Fig 2) Attach Passenger/Right Front Mounting Bracket



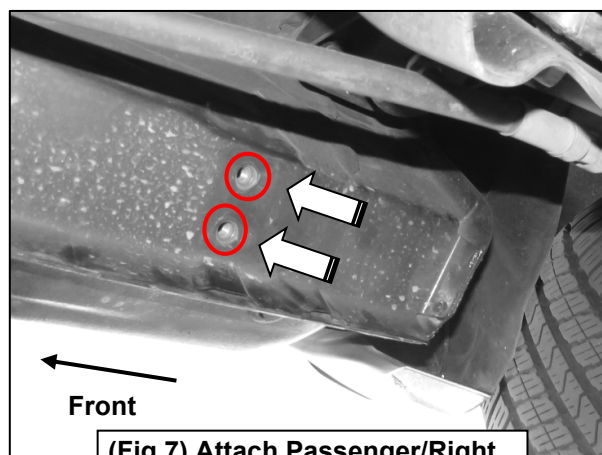
(Fig 4) Attach Passenger/Right Center/Rear Mounting Bracket to Center threaded inserts until hand tight



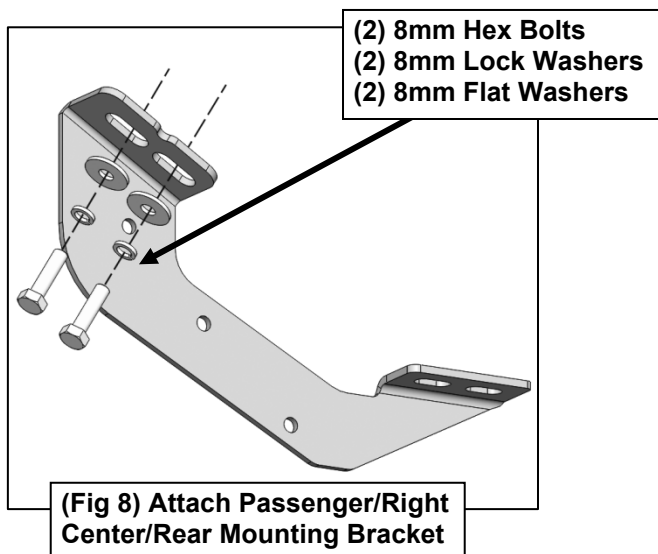
(Fig 5) Attach Passenger/Right Center/Rear Mounting Bracket



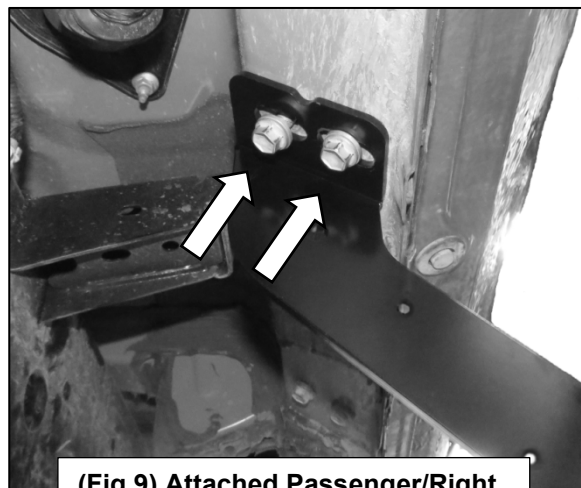
(Fig 6) Attached Passenger/Right Center/Rear Mounting Bracket at Center Mounting Location



(Fig 7) Attach Passenger/Right Rear Mounting Bracket to Rear threaded inserts until hand tight



(Fig 8) Attach Passenger/Right Center/Rear Mounting Bracket



(Fig 9) Attached Passenger/Right Center/Rear Mounting Bracket at Rear Mounting Location

2

Follow (Fig 10-11) to attach the Side Bar to the Passenger Side Brackets. Repeat the following steps on the Driver Side. Ensure fasteners are only hand tight at this point.

(2) Cover Retaining Pins

(Fig 10) Attach Plastic Covers to Mounting Bracket



(Fig 11) Attached Plastic Cover

3

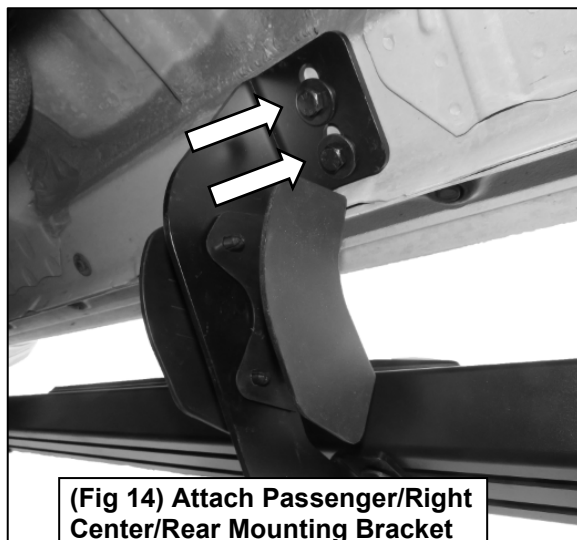
Follow (Fig 12 – 14) to attach the Side Bar to the Passenger Side Brackets. Repeat the following steps on the Driver Side. Ensure fasteners are only hand tight at this point.

(2) T-Bolts

(Fig 12) Insert (6) T-Bolts into the channels in the bottom of the Sidebar, (3) per channel

(2) 8mm Hex Nuts
(2) 8mm Lock Washers
(2) 8mm Flat Washers

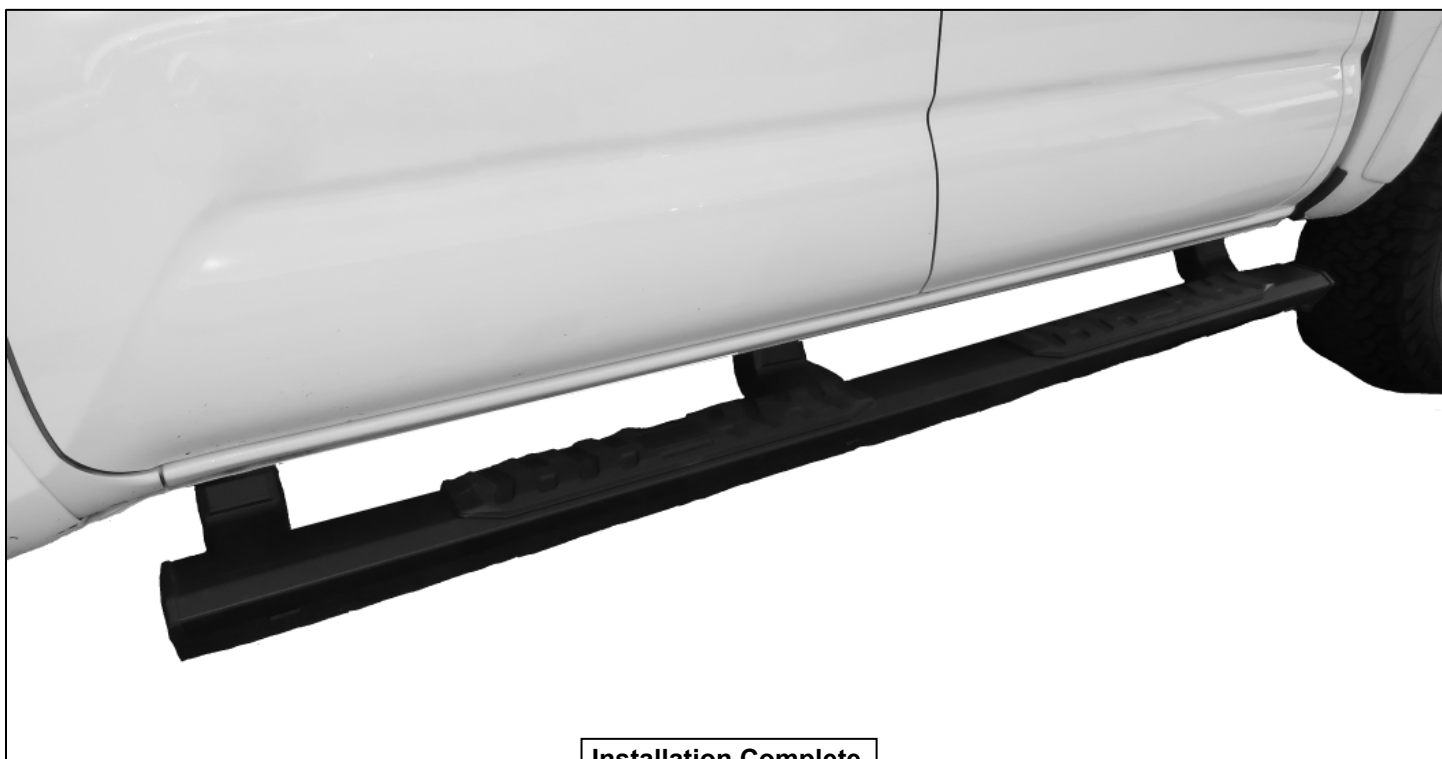
(Fig 13) Attach Side Bar to all Passenger/Right Brackets until hand tight



(Fig 14) Attach Passenger/Right
Center/Rear Mounting Bracket

4

Level and straighten Side Bar, then tighten all fasteners. At this point, installation is complete. Do periodic inspections of the installation to make sure that all hardware is secure and tight.



Installation Complete