

## INSTALLATION INSTRUCTIONS

## PARTS LIST:

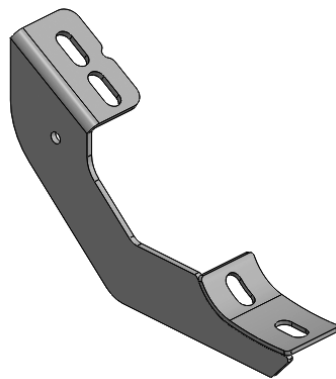
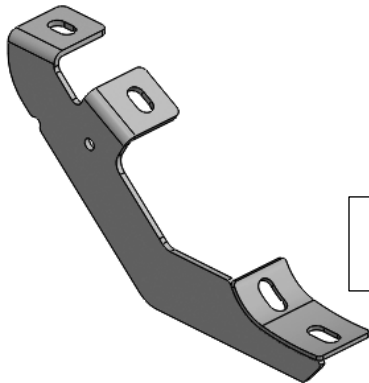
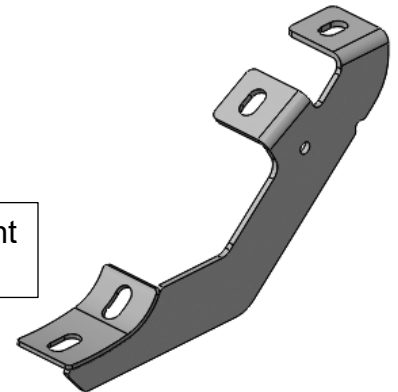
| Qty | Item Description                         | Qty | Item Description                             |
|-----|--|-----|--|
| 1   | Driver Side Bar                          | 2   | Passenger/Right Center/Rear Mounting Bracket |
| 1   | Passenger Side Bar                       | 12  | 8-1.25mm x 25mm Combo Bolts                  |
| 1   | Driver/Left Front Mounting Bracket       | 12  | 8mm Lock Washers                             |
| 1   | Passenger/Right Front Mounting Bracket   | 12  | 8mm x 24mm OD x 2mm Flat Washers             |
| 2   | Driver/Left Center/Rear Mounting Bracket | 12  | 8-1.25mm x 30mm Hex Bolts                    |

Front  
←

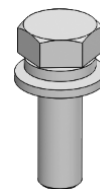
Passenger/Right Side Bar



Driver/Left Side Bar

Driver/Left  
Center/Rear  
BracketPassenger/Right  
Center/Rear  
BracketDriver/Left  
Front BracketPassenger/Right  
Front BracketLock  
WasherFlat  
Washer

Hex Bolt



Combo Bolt

## TOOLS REQUIRED



Ratchet



13mm Socket



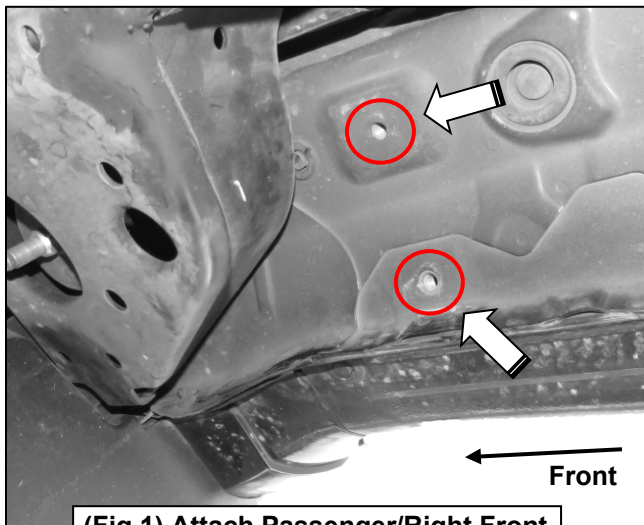
Extensions



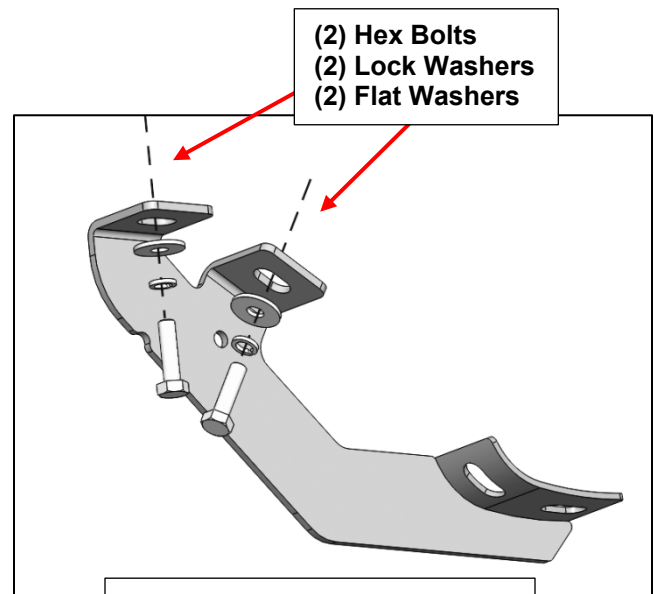
Wrench

**1**

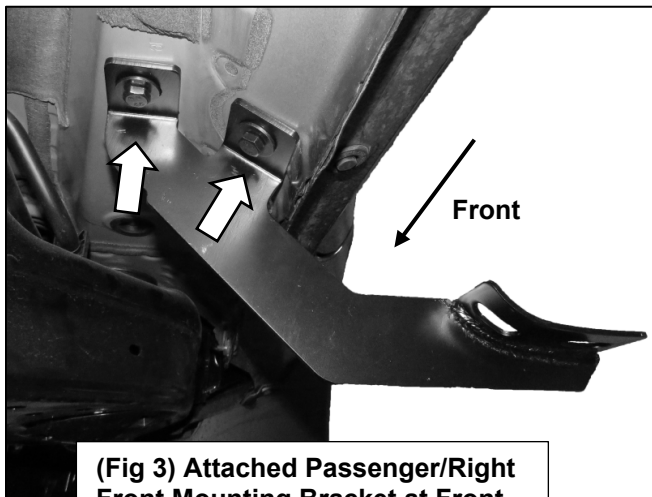
Follow (Fig 1 – 9) to attach the brackets to the Passenger Side. Repeat the following steps on the Driver Side. Ensure fasteners are only hand tight at this point.



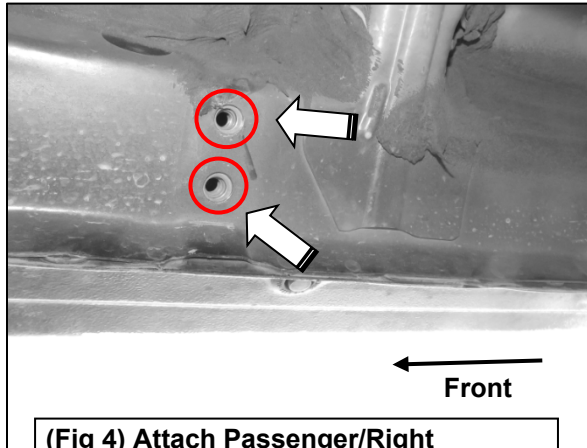
(Fig 1) Attach Passenger/Right Front Mounting Bracket to Front threaded inserts until hand tight



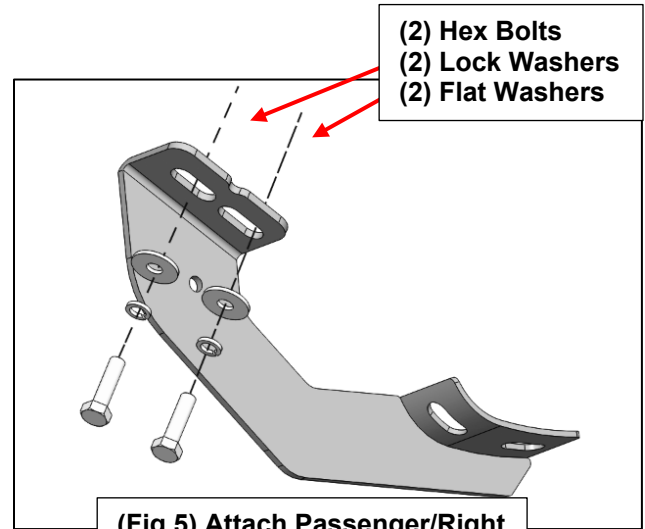
(Fig 2) Attach Passenger/Right Front Mounting Bracket



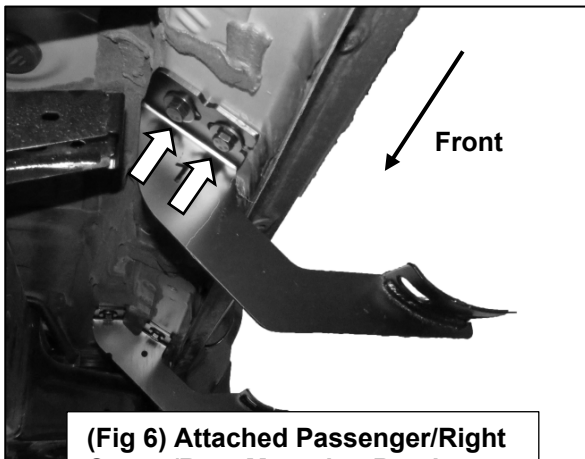
(Fig 3) Attached Passenger/Right Front Mounting Bracket at Front Mounting Location



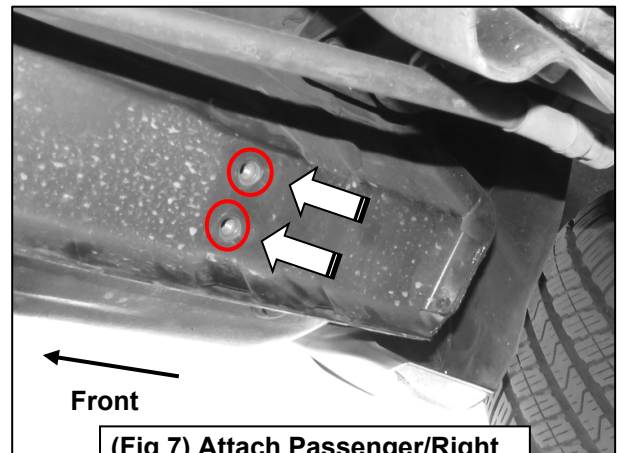
(Fig 4) Attach Passenger/Right Center/Rear Mounting Bracket to Center threaded inserts until hand tight



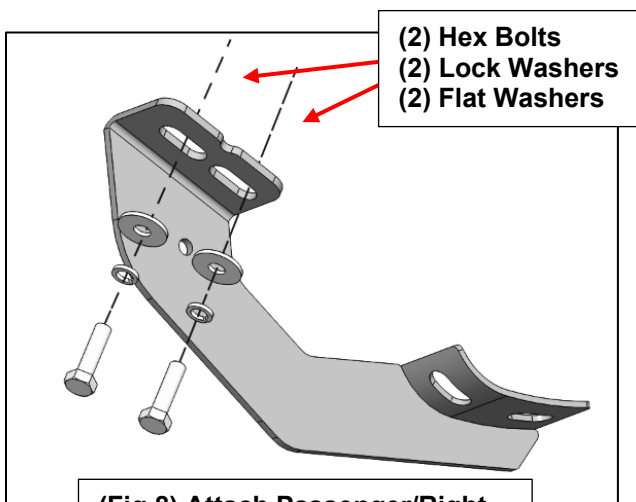
(Fig 5) Attach Passenger/Right Center/Rear Mounting Bracket



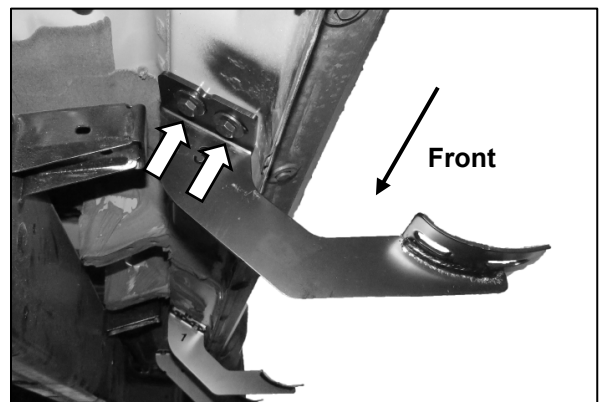
(Fig 6) Attached Passenger/Right Center/Rear Mounting Bracket at Center Mounting Location



(Fig 7) Attach Passenger/Right Rear Mounting Bracket to Rear threaded inserts until hand tight



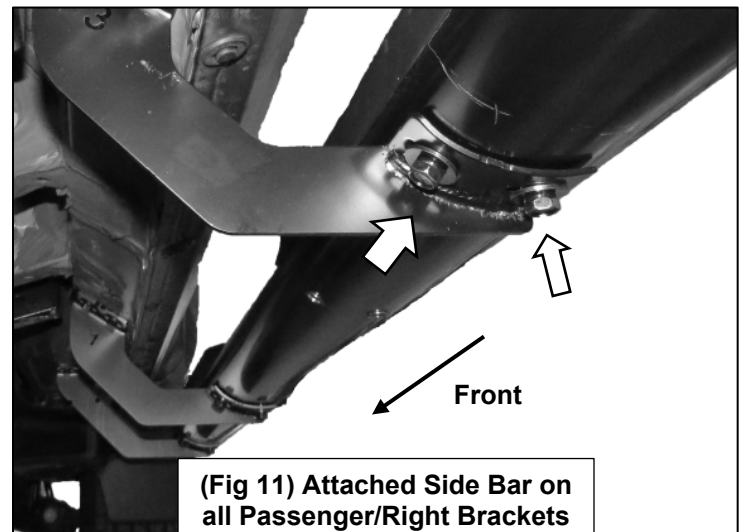
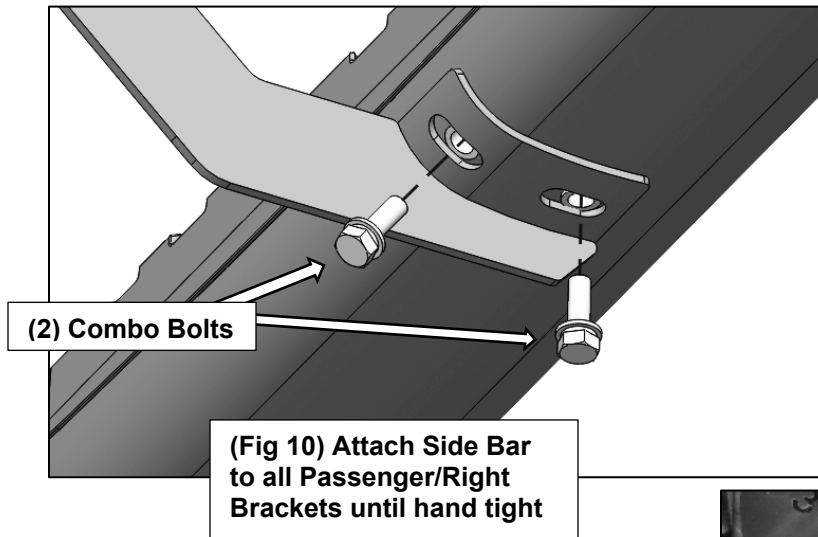
(Fig 8) Attach Passenger/Right Center/Rear Mounting Brackets



(Fig 9) Attached Passenger/Right Center/Rear Mounting Bracket at Rear Mounting Location

**2**

Follow (Fig 10-11) to attach the Side Bar to the Passenger Side Brackets. Repeat the following steps on the Driver Side. Ensure fasteners are only hand tight at this point.

**3**

Level and straighten Side Bar, then tighten all fasteners. At this point, installation is complete. Do periodic inspections of the installation to make sure that all hardware is secure and tight.

