



TUBULAR FRONT UPPER CONTROL ARM FOR 2-4” LIFT

(2005-2023 TACOMA)

INSTALLATION INSTRUCTIONS

CONTENTS

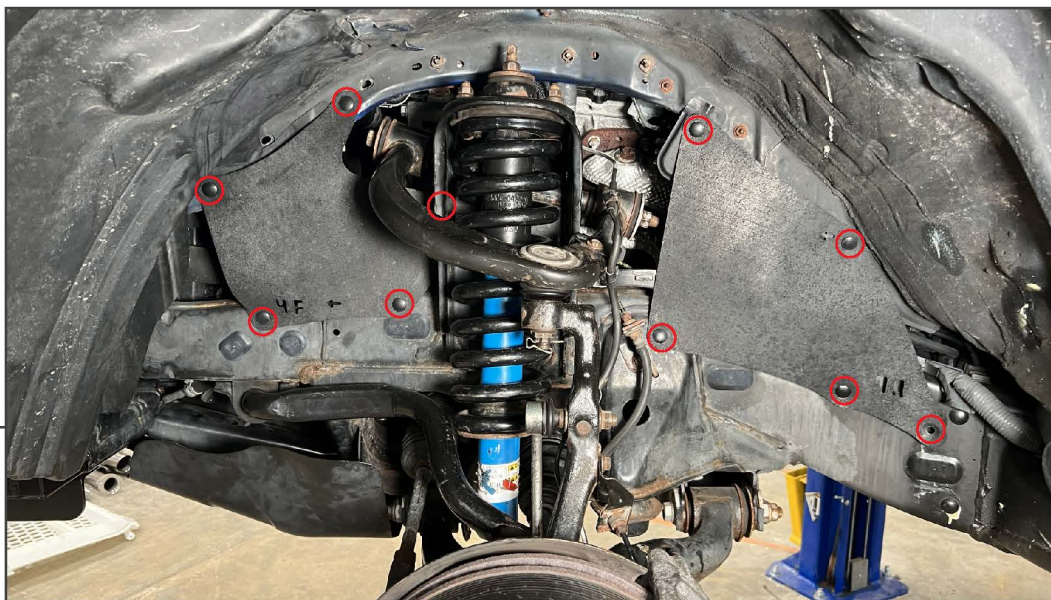
- (1) LH Upper Control Arm
- (1) RH Upper Control Arm
- (2) M12 Nuts (Ball Joint)
- (2) M6 Lock Nuts (ABS Line)

TOOLS REQUIRED

- 10mm, 17mm, 19mm
Socket/Wrench
- Ratchet
- Floor Jack
- Jack Stands
- Spray Lubricant

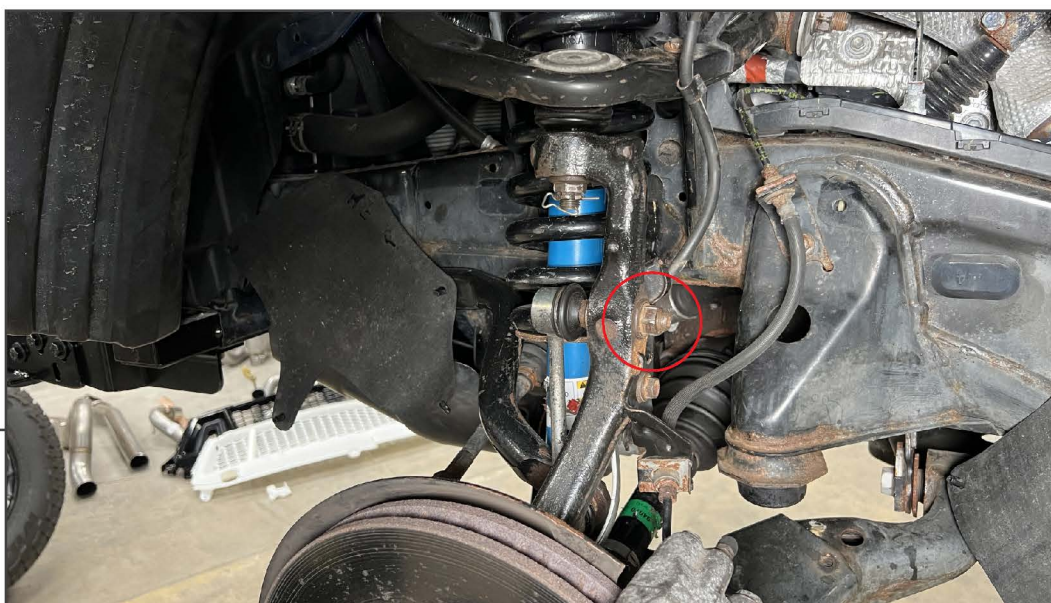
SKU # TT48486

STEP 1



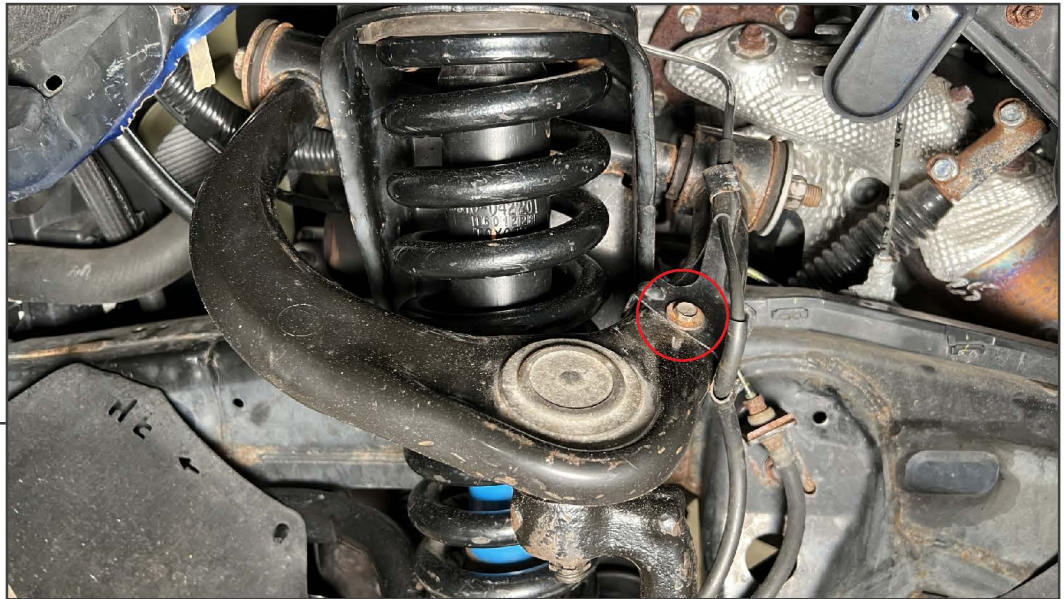
Lift and support the vehicle using a floor jack and jack stands. Remove the wheel from the vehicle. Using a panel removal tool, remove the splash shields on each side of the vehicle strut.

STEP 2



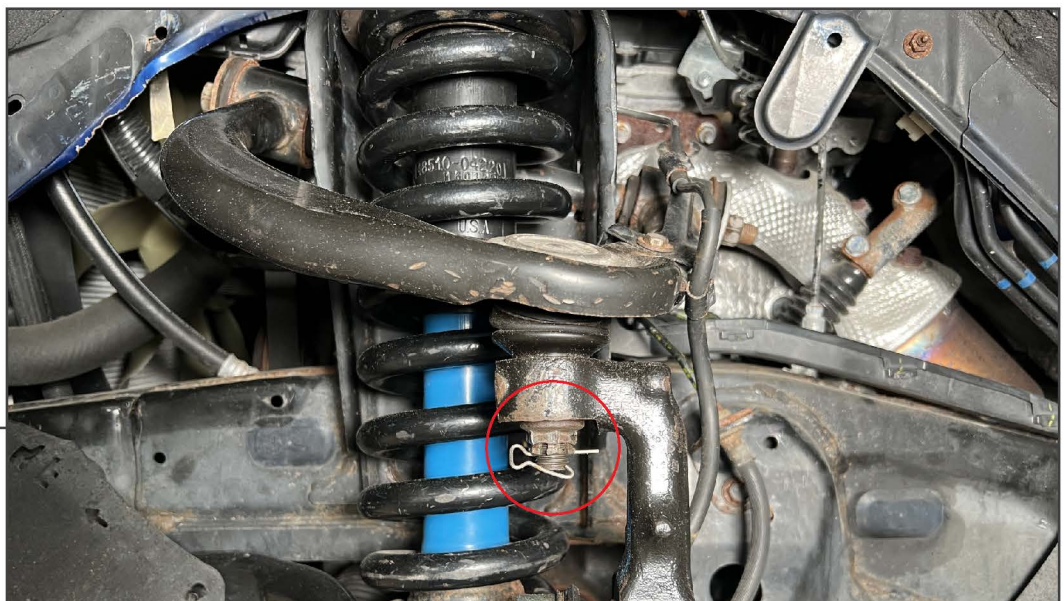
Remove (1) 17mm nut from the sway bar link. Remove the sway bar link from the steering knuckle.

STEP 3



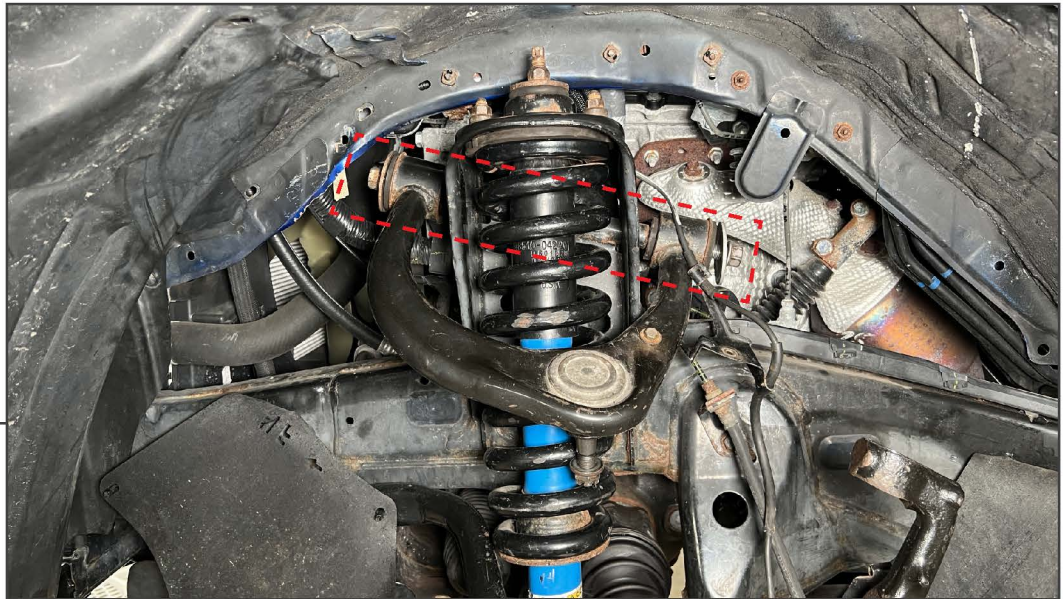
Remove (1) 10mm bolt from the ABS line retainer. Remove the line retainer from the control arm.

STEP 4



Remove the upper ball joint cotter pin. Then loosen, but do not remove, the (1) 19mm ball joint nut.

With the nut loose, strike the steering knuckle with a hammer to dislodge the ball joint from the knuckle. With the ball joint dislodged, use a pry bar to pry downwards on the control arm to remove the nut, then lower the steering knuckle away.



STEP 5

The vehicle uses (1) through-bolt through the vehicle frame to secure both ends of the control arm.

Using a 19mm socket and wrench, remove the nut from the control arm through bolt. Then, remove the head of the bolt towards the front of the vehicle.

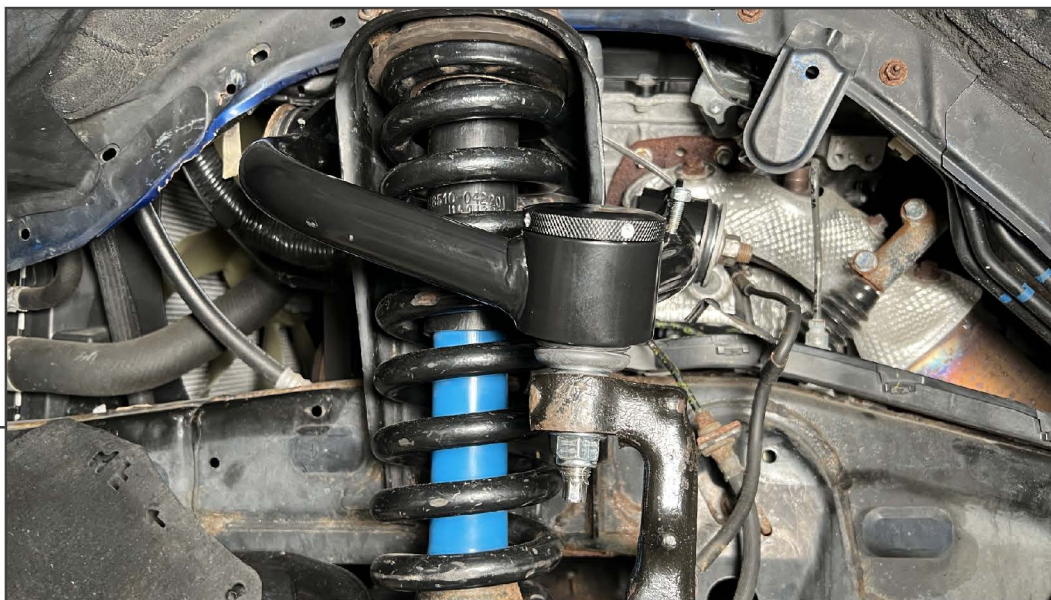
Note: Gently massaging engine bay components may be necessary for additional clearance. Ensure to identify the direction of the bolt washers during removal.



STEP 6

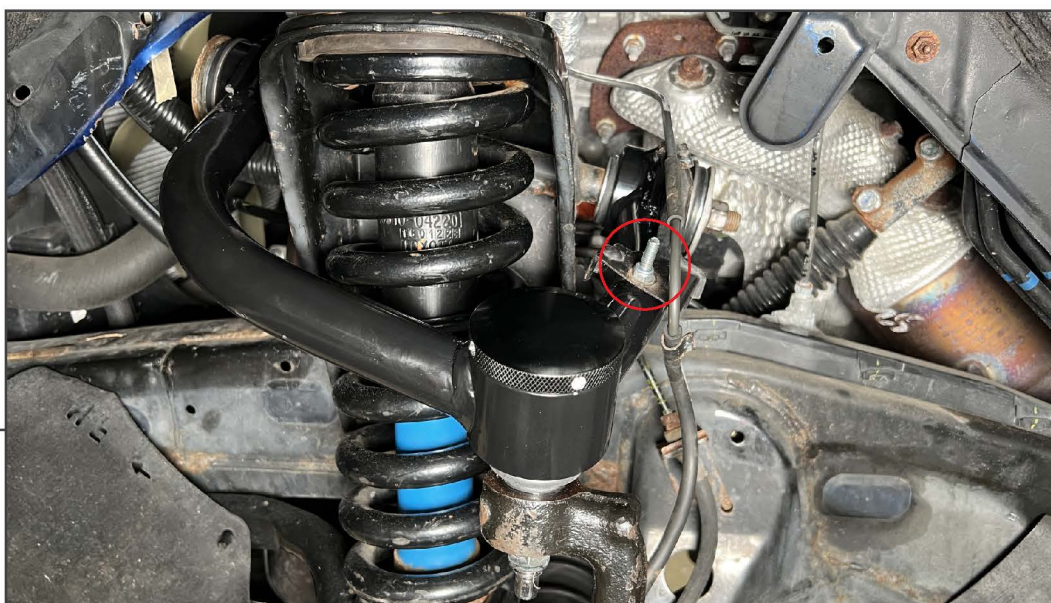
Install the new control arm to the vehicle re-using the original 19mm bolt. Do not fully tighten the bolt at this time. The control arm mounting bolt will be tightened with the vehicle on the ground with the suspension loaded.

STEP 7



Secure the control arm ball joint to the vehicle steering knuckle using the (1) 19mm lock nut.

STEP 8



Secure the ABS line bracket to the new control arm stud using the included (1) 10mm lock nut.

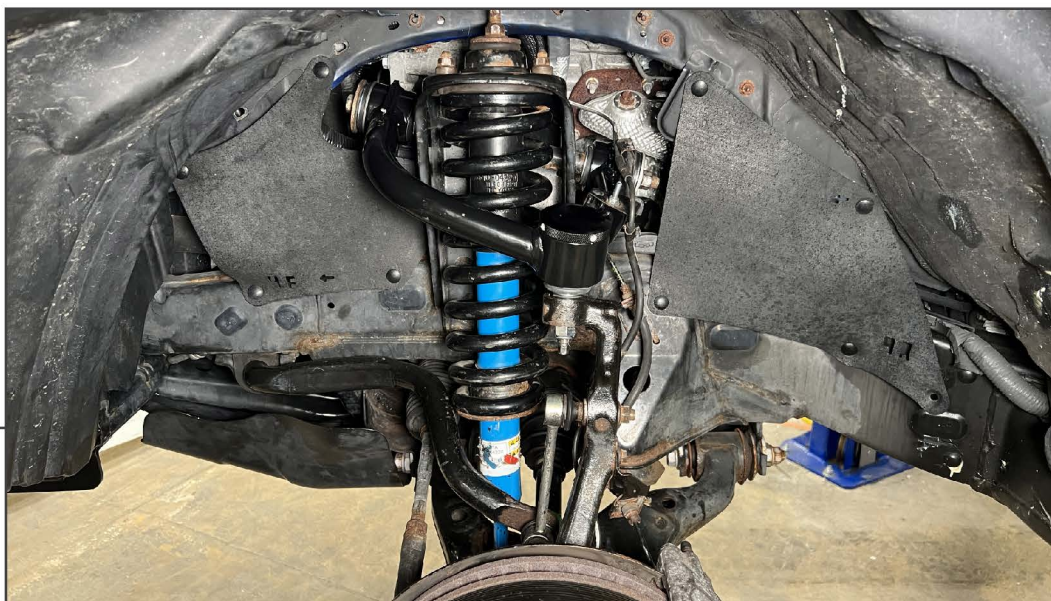
STEP 9



Turn the ball joint cap counter-clockwise to remove the ball joint cap to reveal the grease fitting. Fill the ball joint with synthetic grease until full, do not overfill.

With the ball joint greased, re-install the cap.

STEP 10



With the vehicle suspension loaded, torque the upper control arm 19mm bolt to 85 ft. lbs.

Re-install the sway bar link to the steering knuckle. Re-install the splash shields using the original push clips.

Installation is now complete.