



EXTREME HD MODULAR GRILLE GUARD

(2016-2023 TACOMA)

INSTALLATION INSTRUCTIONS

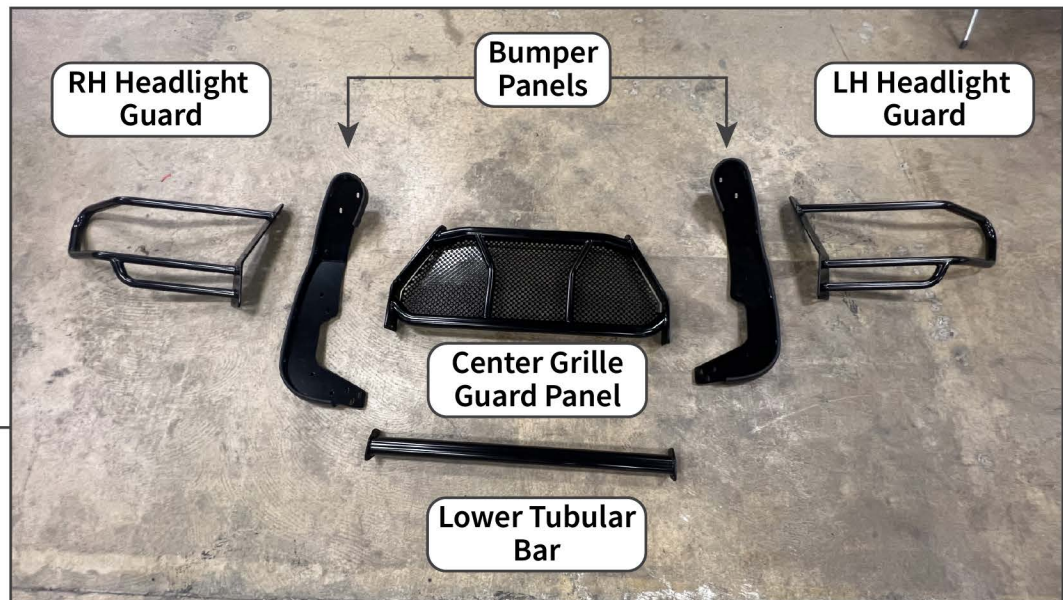
CONTENTS

(1) LH Headlight Guard Panel
(1) RH Headlight Guard Panel
(1) LH Bumper Panel
(1) RH Bumper Panel
(1) Center Grille Guard Panel
(1) Lower Tubular Bar
(1) LH Lower Mounting Bracket
(1) RH Lower Mounting Bracket
(1) LH Upper Mounting Bracket
(1) RH Upper Mounting Bracket
(2) M10 x 1.50 x 30mm Stud Plates
(2) M10 x 1.50 x 40mm Stud Plates
(12) M10 x 1.50 x 35mm Bolts
(16) M10 Lock Washers
(28) M10 Flat Washers
(16) M10 Nuts
(8) M8 x 1.25 x 40mm Bolts
(16) M8 Flat Washers
(8) M8 Lock Nuts

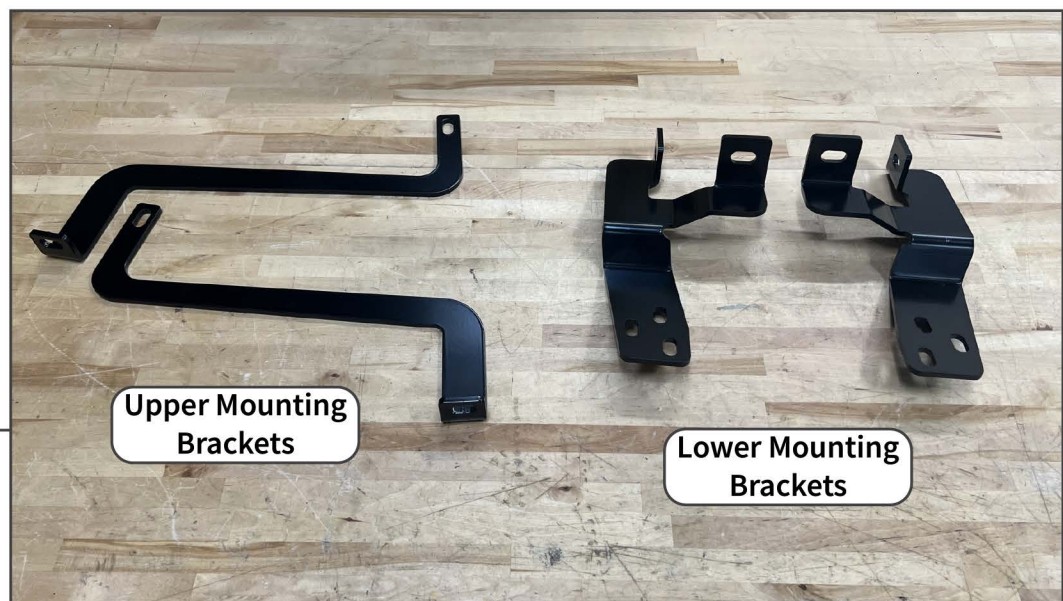
TOOLS REQUIRED

10mm, 16mm, 17mm
Sockets/Wrenches
Ratchet
Panel Removal Tool

SKU # TT48483

STEP 1

Lay out and identify all grille guard components on a soft workable surface.

STEP 2

Lay out and identify all grille guard mounting brackets and hardware on a workable surface.

STEP 3

Fit the center grille guard panel in between the LH and RH bumper panels. Then, align each headlight guard to the center grille guard panel and the bumper panels. Once aligned, loosely secure the panels together using (8) M8 x 40mm bolts, (16) M8 flat washers, and (8) M8 lock nuts.

STEP 4

Loosely secure the center support tube to the LH and RH bumper panels using (4) M10 x 35mm bolts, (8) M8 flat washers, and (4) M8 lock nuts.

Tighten all grille guard hardware assembly hardware.

**STEP 5**

Open the vehicle hood. Remove (2) 10mm screws and (2) plastic push clips from the top of the grille. Then, pull the grille away from the vehicle to remove the grille from the vehicle.

**STEP 6**

Locate the holes along the lower radiator support cross bar. Insert (2) M10 x 30mm stud plates into the cross bar to allow the stud to fit into the cross bar hole.

STEP 7

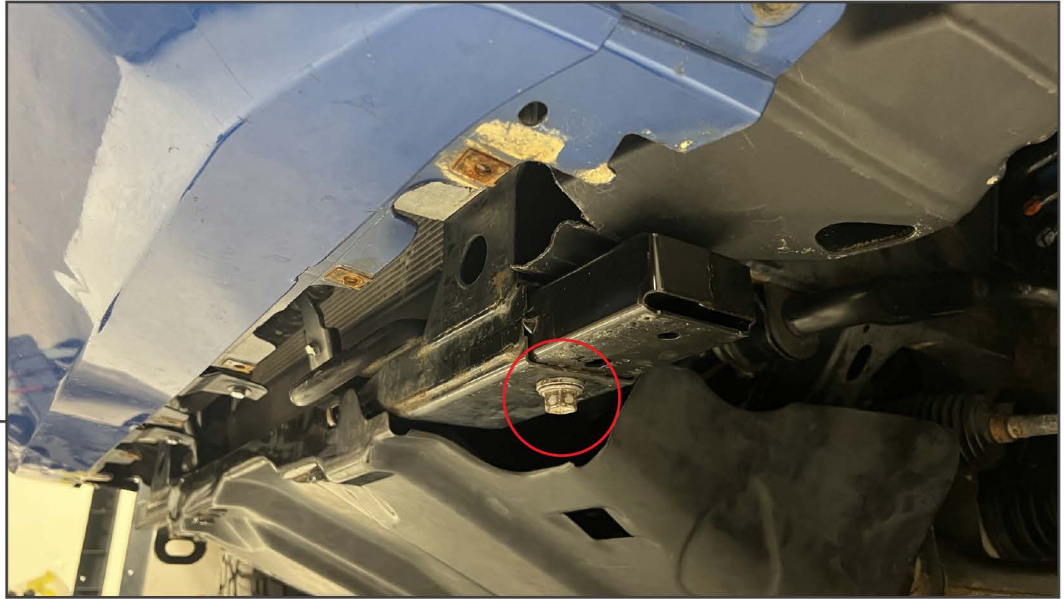
Route the flat side of the upper mounting brackets through the bottom outer-most slot in the vehicle bumper on each side. Secure each mounting bracket to the previously mounted stud plates using (1) M10 flat washer, (1) M10 lock washer, and (1) M10 nut per bracket. Ensure the stud plate is not touching the radiator fins while tightening the bracket into place.

Note: The flag side of the mounting bracket must point downwards.

Re-install the vehicle grille reusing the original hardware.

STEP 8

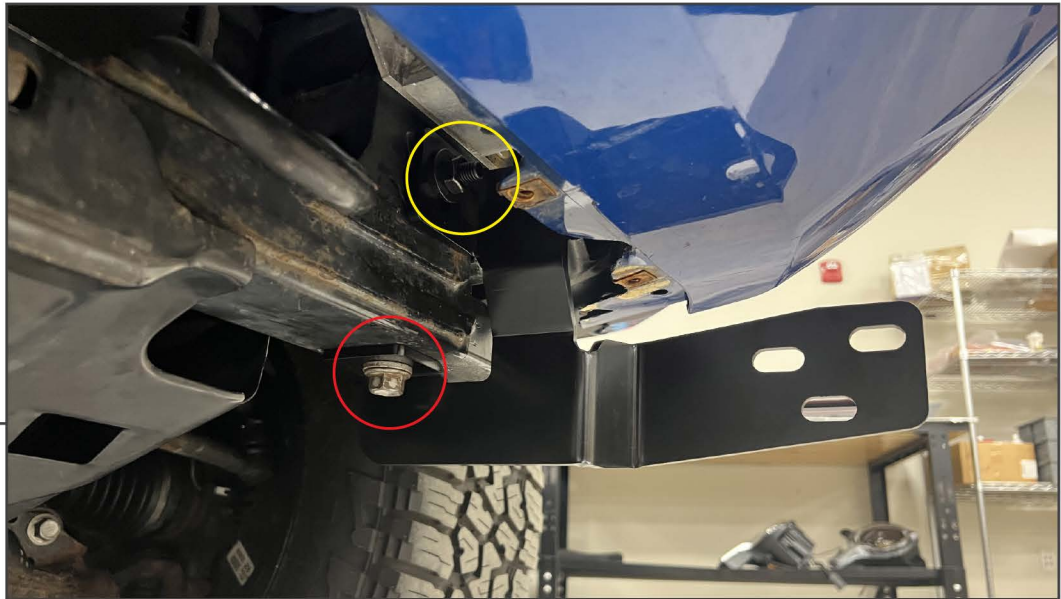
Remove the lower splash shield from the vehicle bumper by removing (12) 10mm screws.

STEP 9

Remove (1) 17mm bolt from the frame rail extension panel.

STEP 10

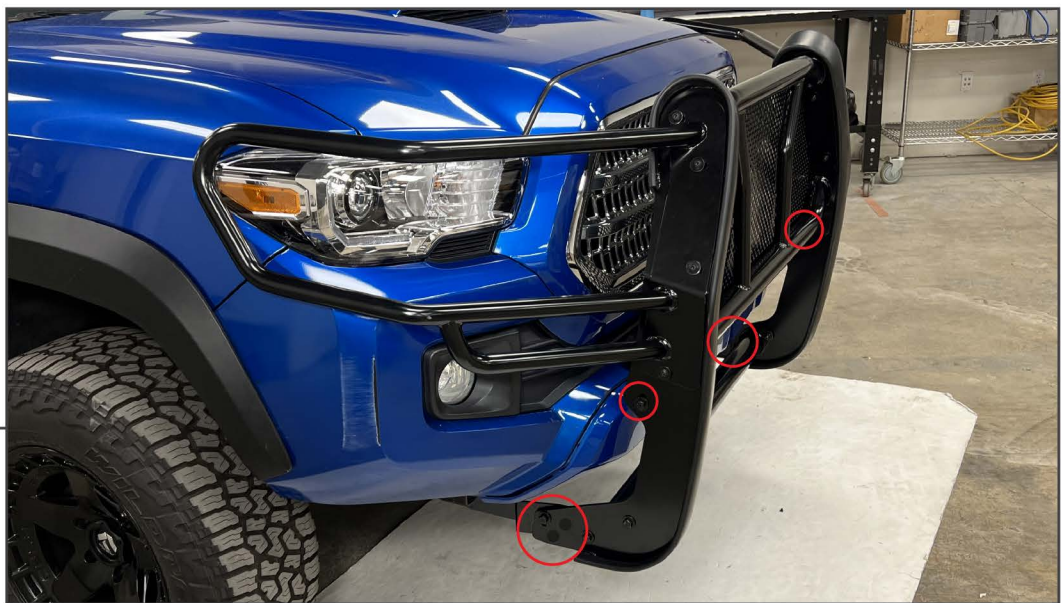
Fit (1) M10 x 35mm stud plate into the hole in the frame, use the included plastic stud holder to hold the stud into place.

STEP 11

Fit the lower mounting bracket to the previously mounted stud plate. Then, loosely secure to the stud plate using (1) M10 flat washer, (1) M10 lock washer, and (1) M10 nut.

Secure the bottom of the bracket to the frame reusing the original 17mm bolt. Tighten the hardware evenly.

Repeat this step for the remaining mounting bracket.

STEP 12

With assistance, fit the grille guard to the previously installed mounting brackets. Secure the bottom of the grille guard to the lower and upper mounting brackets using (8) M10 x 35mm bolts, (8) M10 lock washers, (16) M10 flat washers, and (8) M10 nuts.



STEP 13

Adjust the grille guard to best fit the vehicle. Once properly adjusted, tighten all hardware evenly until secure.

Installation is now complete.