

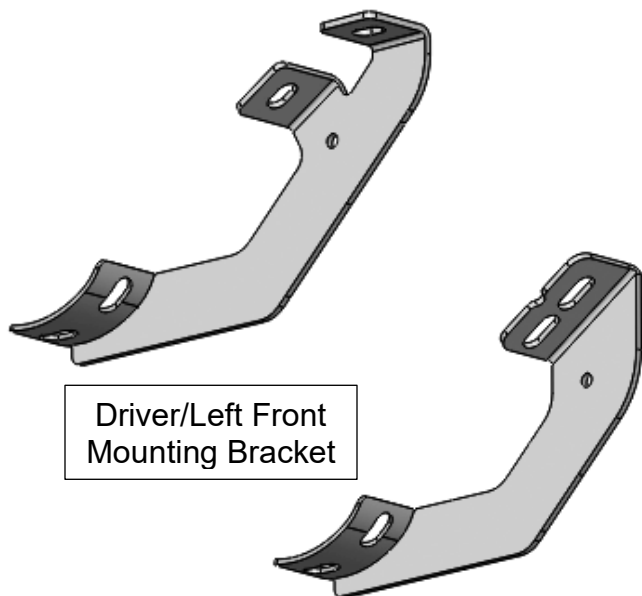
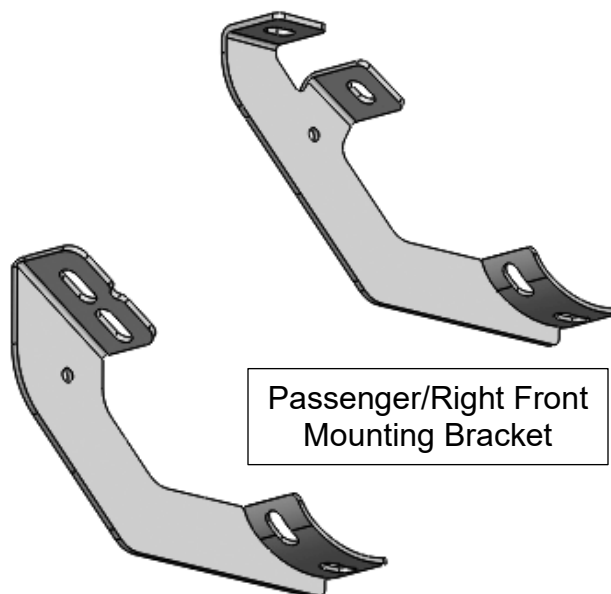
## INSTALLATION INSTRUCTIONS

## PARTS LIST:

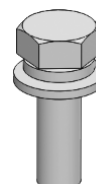
Qty	Item Description	Qty	Item Description
1	Driver/Left Side Bar	2	Passenger/Right Center & Rear Mounting Brackets
1	Passenger/right Side Bar	12	8mm Lock Washers
1	Driver/Left Front Mounting Bracket	12	8mm x 24mm OD x 2mm Flat Washers
2	Driver/Left Center & Rear Mounting Brackets	12	8-1.25mm x 30mm Hex Bolts
1	Passenger/Right Front Mounting Bracket	12	8-1.25mm x 25mm Combo Bolts



Front

Driver/Left Front  
Mounting BracketDriver/Left Center &  
Rear Mounting BracketsPassenger/Right Front  
Mounting BracketPassenger/Right Center &  
Rear Mounting BracketsLock  
WasherFlat  
Washer

Hex Bolt



Combo Bolt

## TOOLS REQUIRED



Ratchet



13mm Socket



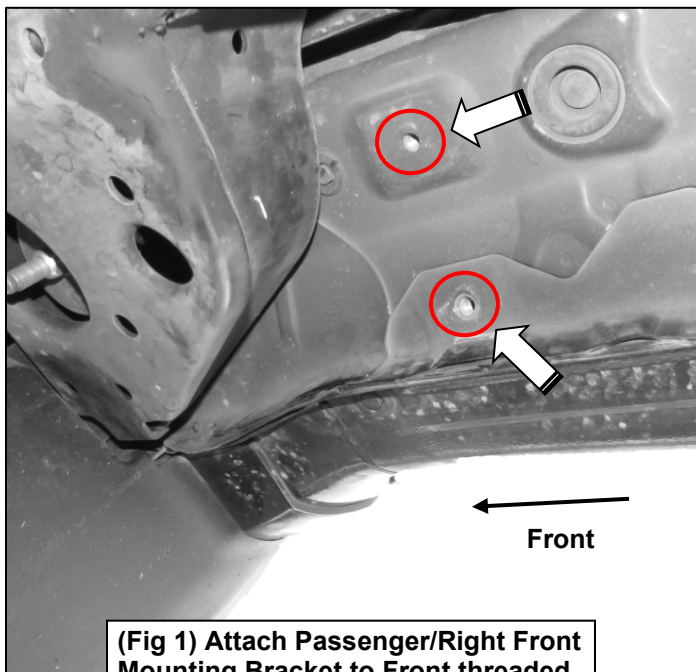
Extensions



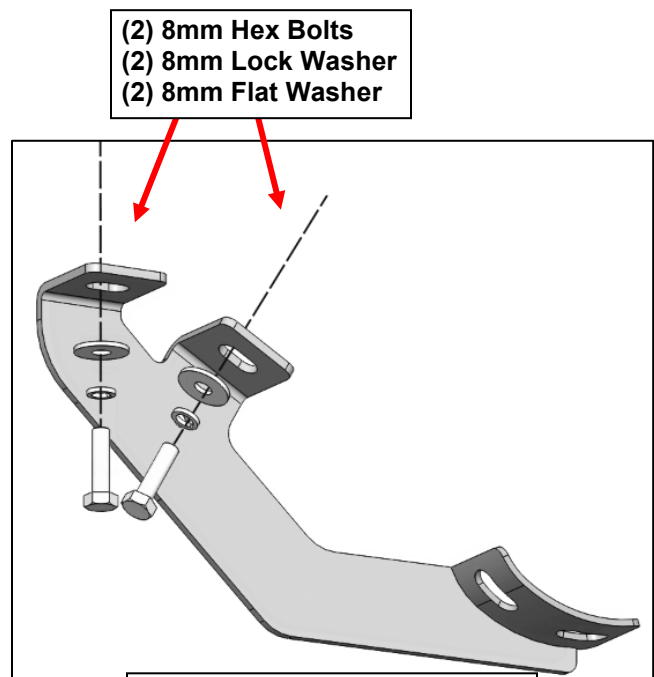
Wrench

1

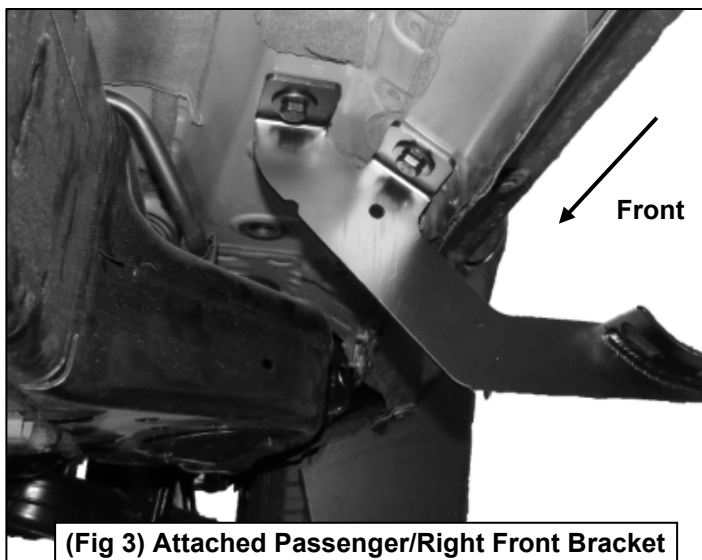
Follow (Fig 1 – 9) to attach the brackets to the Passenger Side. Repeat the following steps on the Driver Side. Ensure fasteners are only hand tight at this point.



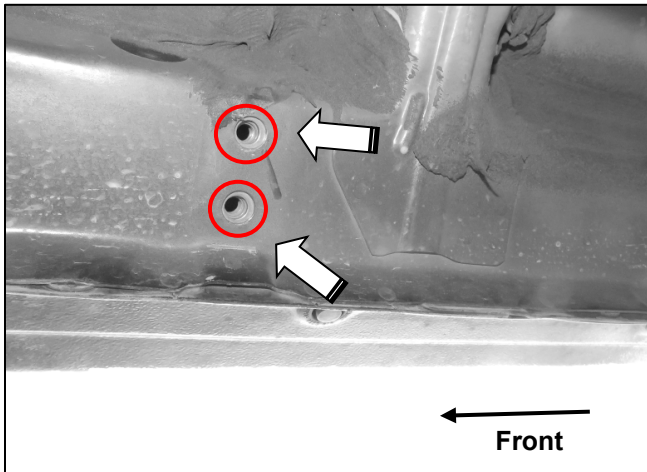
(Fig 1) Attach Passenger/Right Front Mounting Bracket to Front threaded inserts until hand tight



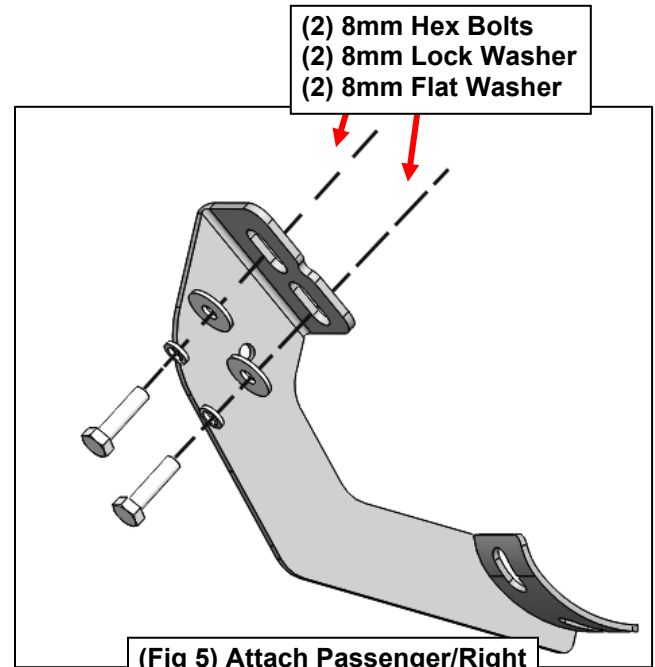
(Fig 2) Attach Passenger/Right Front Bracket



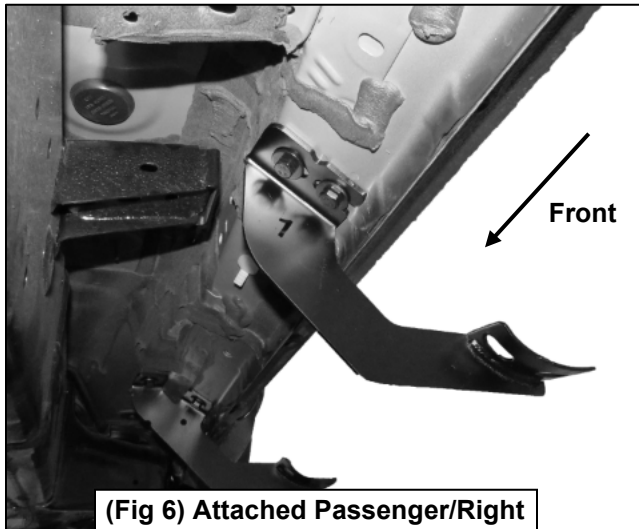
(Fig 3) Attached Passenger/Right Front Bracket



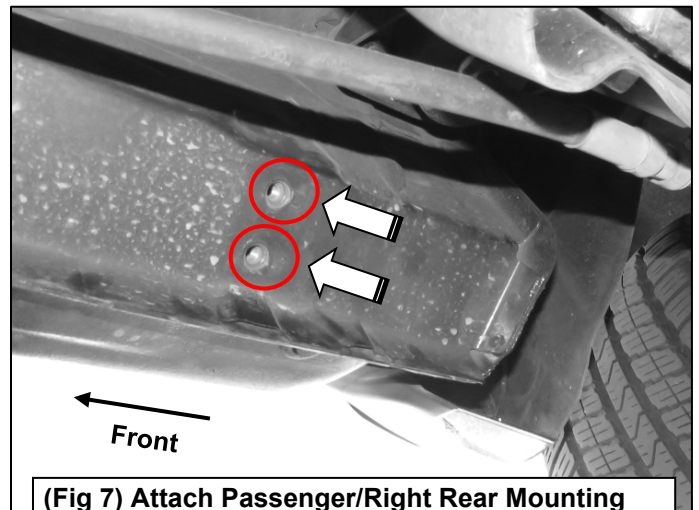
(Fig 4) Attach Passenger/Right Center Mounting Bracket to Center threaded inserts until hand tight



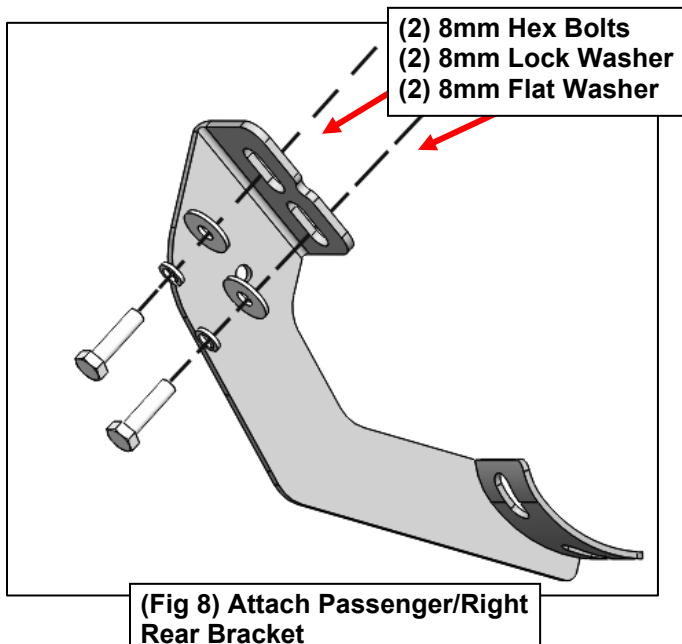
(Fig 5) Attach Passenger/Right Center Bracket



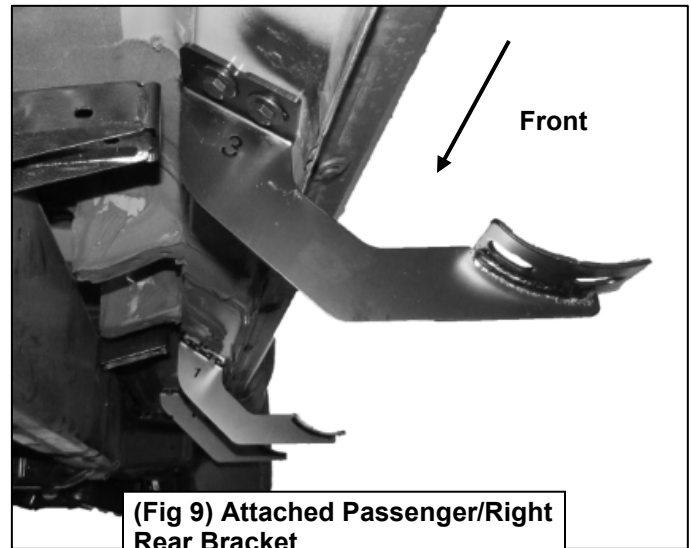
(Fig 6) Attached Passenger/Right Center Bracket



(Fig 7) Attach Passenger/Right Rear Mounting Bracket to Rear threaded inserts until hand tight



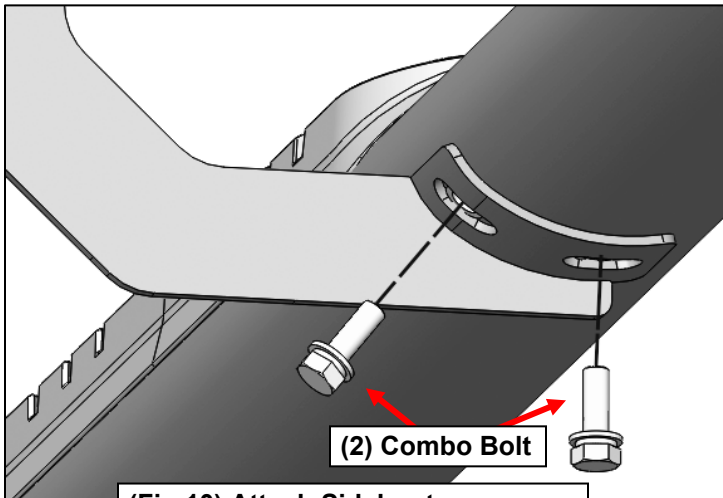
(Fig 8) Attach Passenger/Right Rear Bracket



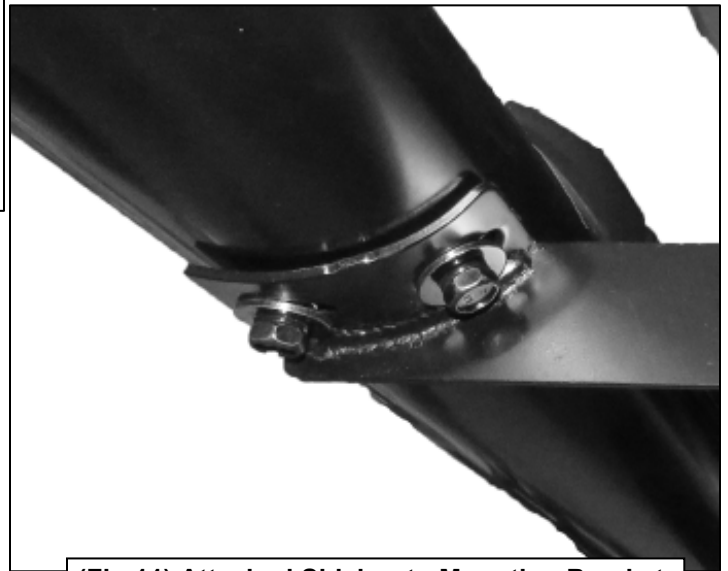
(Fig 9) Attached Passenger/Right Rear Bracket

**2**

Follow (Fig 10 – 11) to install the running board. Repeat the following steps on the Driver Side. Ensure fasteners are only hand tight at this point.



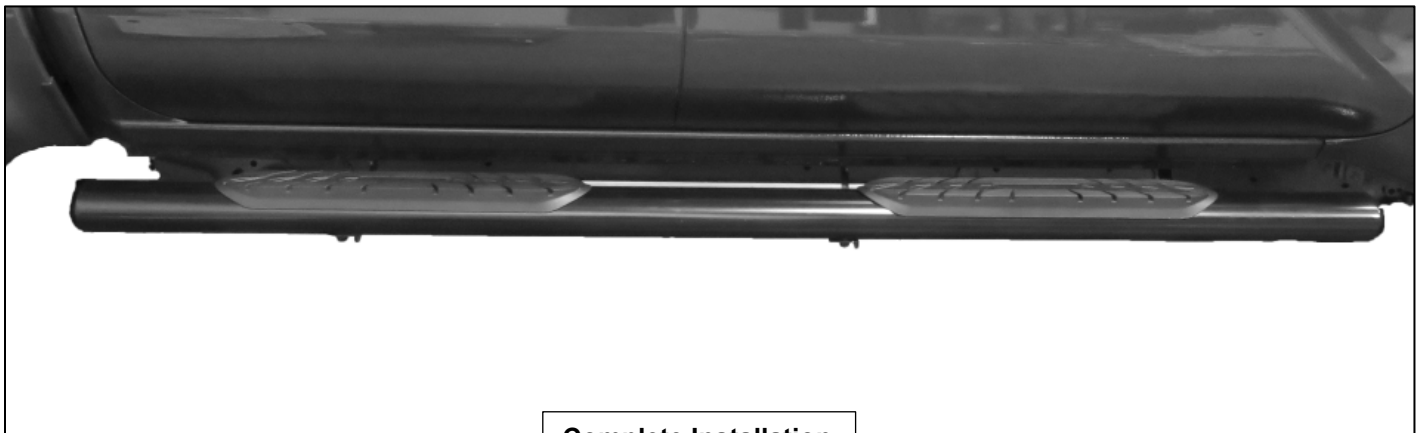
(Fig 10) Attach Sidebar to Mounting Brackets until hand tight



(Fig 11) Attached Sidebar to Mounting Bracket

**3**

At this point, ensure that Sidebar is level, then tighten all fasteners. Installation is complete. Do periodic inspections to the installation to make sure that all hardware is secure and tight.



Complete Installation