



CATBACK EXHAUST SYSTEM

(2016-2023 TACOMA - 3.5L)

INSTALLATION INSTRUCTIONS

CONTENTS

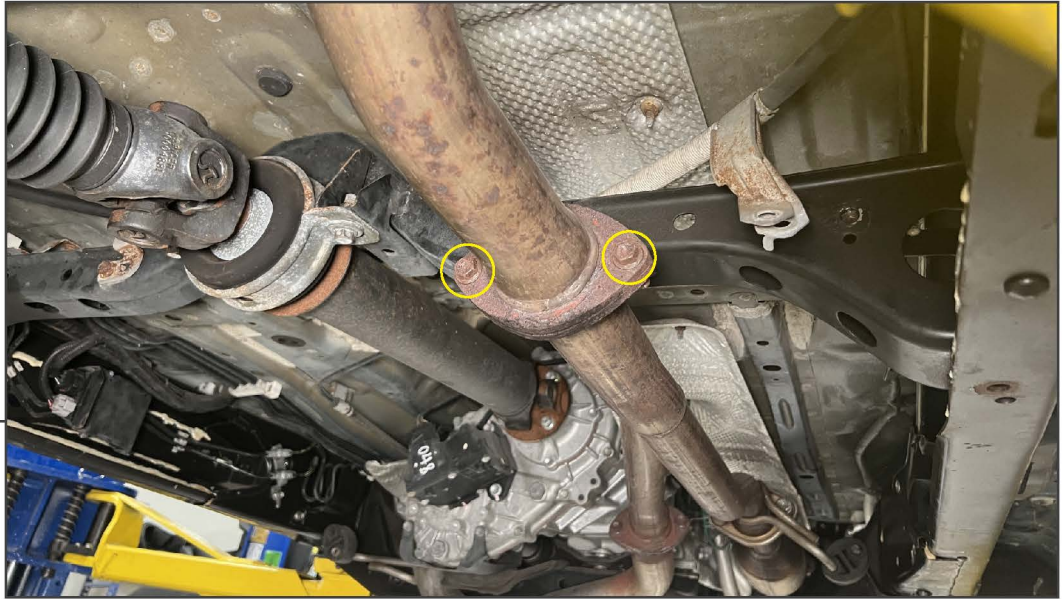
- (1) Front Pipe
- (1) Intermediate Pipe
- (1) Muffler
- (1) LH Over Axle Pipe
- (1) LH Tail Pipe
- (1) RH Over Axle Pipe
- (2) Exhaust Tips
- (1) Hanger Clamp
- (6) 2.5" Exhaust Clamps
- (1) Hanger Bracket
- (1) Rubber Hanger
- (1) M8 Bolt
- (1) M8 Lock Washer
- (1) M8 Nut
- (2) Star Washers

TOOLS REQUIRED

- 14mm, 15mm, 16mm Sockets
- Ratchet
- Spray Lubricant
- Pry Bar
- Floor Jack & Jack Stands

SKU # TT48240

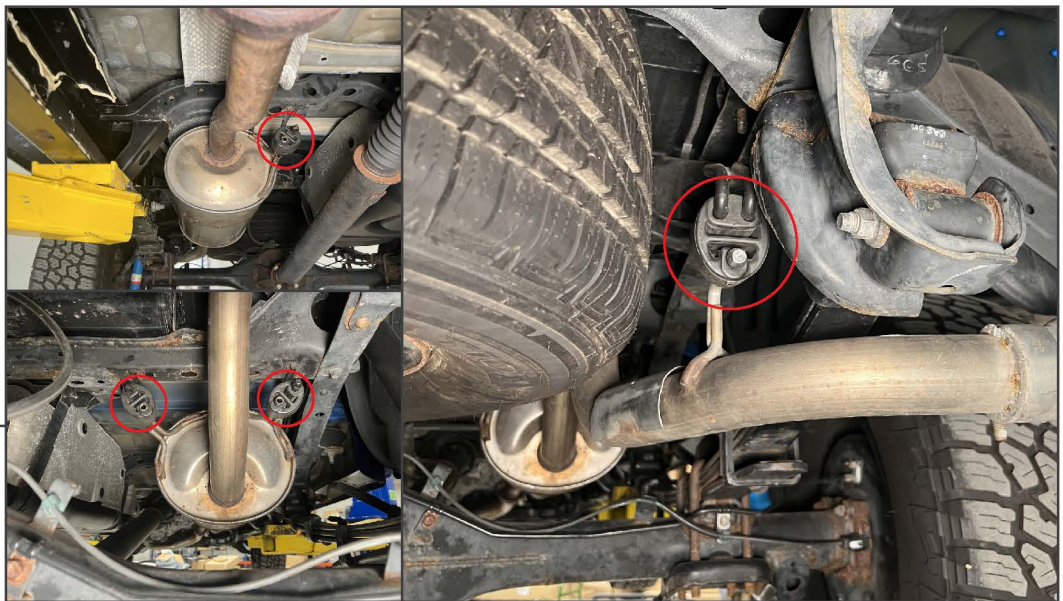
STEP 1



Safely lift and support the vehicle from the ground using a floor jack and jack stands.

Remove (2) 14mm bolts from the exhaust flange in front of the muffler. The bolts will be reused.

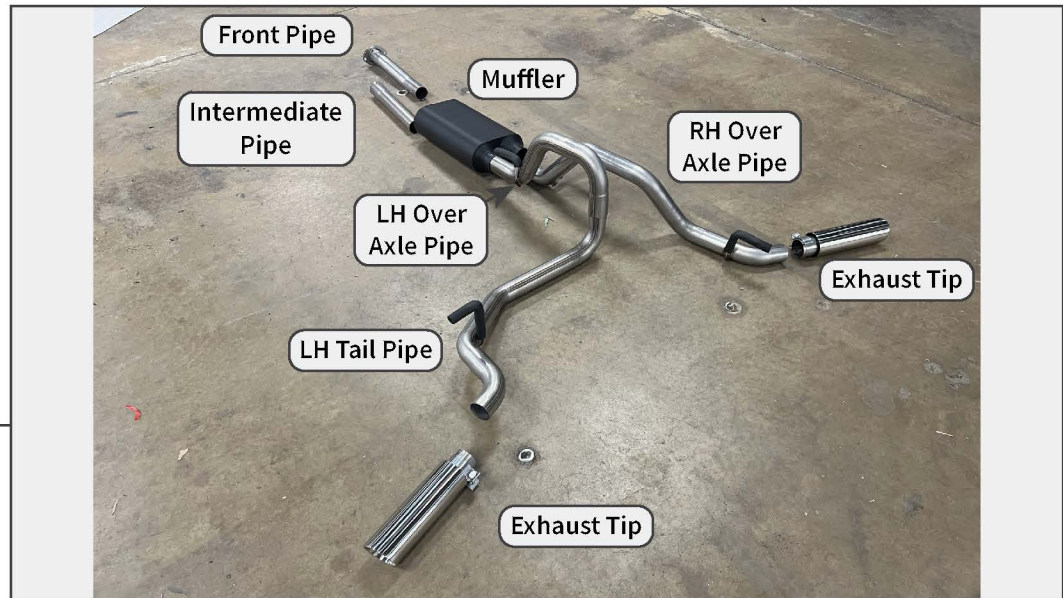
STEP 2



Remove the exhaust system from the (4) rubber hangers. With a helper, remove the exhaust system from the vehicle.

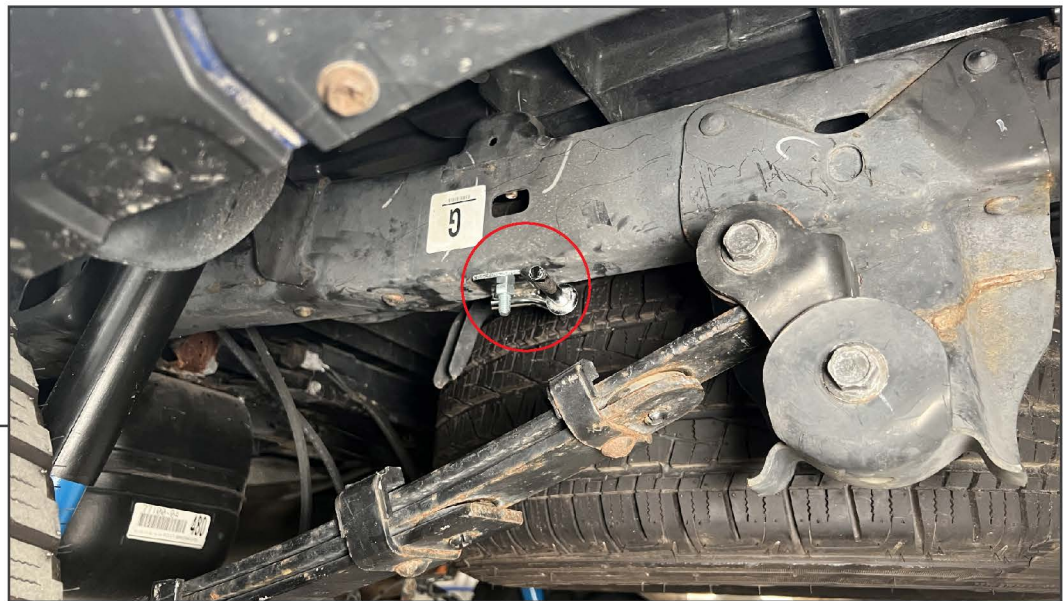


STEP 3



Lay out and identify all exhaust components.

STEP 4



Using the included M8 bolt, lock washer, and nut, loosely secure the hanger bracket to the vehicle frame through the pre-drilled hole. Allow the hanger to move to allow for exhaust adjustments later.



STEP 5



Fit the front pipe to the vehicle exhaust system using the original (2) 14mm bolts. Ensure the pipe bend is angled upwards. Then, fit (1) clamp hanger onto the end of the front pipe. Insert the hanger clamp through the rubber hanger from the rear towards the front of the vehicle.

STEP 6



For 140" wheel base (Double Cab w/ 6ft Bed): Install the intermediate pipe to the front pipe, and secure using the hanger clamp previously installed. Then, fit (1) 2.5" exhaust clamp onto the end of the intermediate pipe to prepare for the muffler.

Note: For best fit, trimming the intermediate pipe may be required.



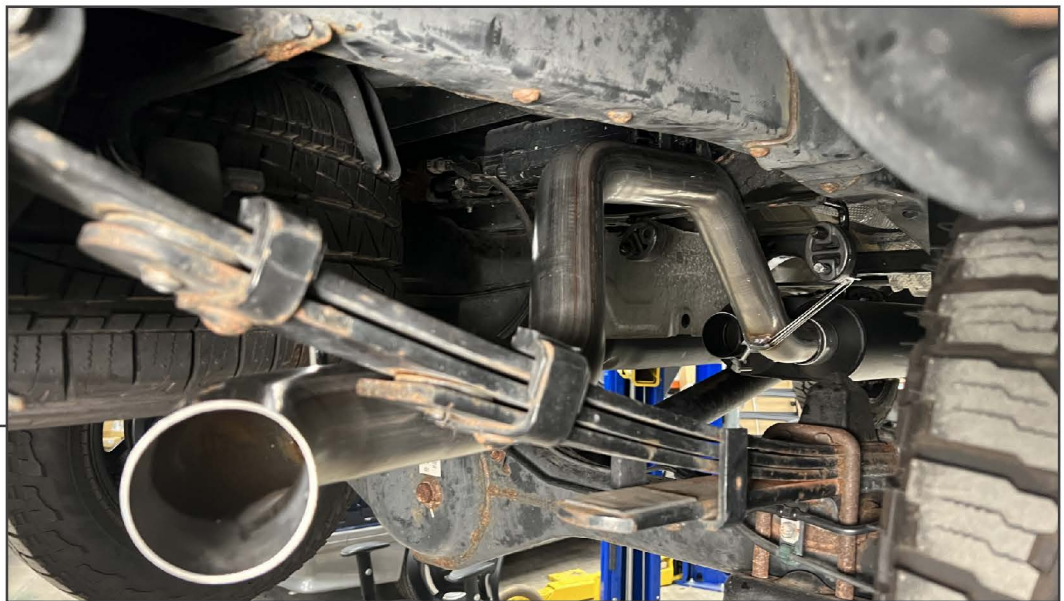
STEP 7



Fit the muffler onto the previously installed front pipe(s). Then, loosely secure the muffler using the hanger clamp.

Fit (2) 2.5" exhaust clamps onto the outlet side of the muffler to prepare for the over-axle pipes.

STEP 8



Fit the RH over axle pipe into the muffler, and fit each pipe hanger into the vehicle rubber hangers. Loosely secure the over axle pipe to the muffler using the previously placed 2.5" exhaust clamp.

Fit (1) 2.5" exhaust clamp onto the end of the over axle pipe to prepare for the exhaust tip.

Note: With the suspension at full droop, the exhaust pipes will have limited leaf spring clearance. With the vehicle on the ground/suspension loaded, adequate clearance is provided. Final exhaust adjustments will be made with the vehicle on the ground.



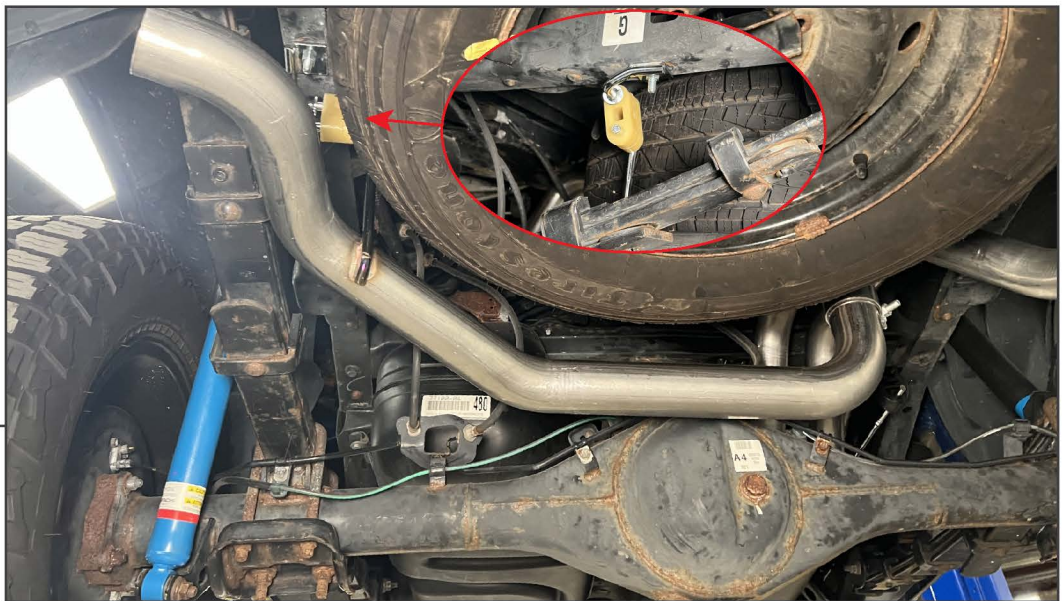
STEP 9



Fit the LH over axle pipe into the muffler, and fit the pipe hanger into the vehicle rubber hanger. Loosely secure the over axle pipe to the muffler using the previously placed 2.5" exhaust clamp.

Fit (1) 2.5" exhaust clamp onto the end of the over axle pipe to prepare for the tail pipe.

STEP 10



Fit the LH tail pipe onto the LH over axle pipe, and fit the pipe hanger into the previously installed frame hanger bracket using the included rubber hanger. Loosely secure the tail pipe to the over axle pipe using the previously placed 2.5" exhaust clamp. Then, tighten the frame hanger bracket.

Fit (1) 2.5" exhaust clamp onto the end of the over axle pipe to prepare for the exhaust tip.

Note: With the suspension at full droop, the exhaust pipes will have limited leaf spring clearance. With the vehicle on the ground/suspension loaded, adequate clearance is provided. Final exhaust adjustments will be made with the vehicle on the ground.



STEP 11

Lower the vehicle to the ground to apply weight to the vehicle suspension. Fit the (2) exhaust tips to the exhaust system.

Adjust the exhaust on the vehicle for best fit. Tighten all exhaust clamps to 45 ft. lbs.

Installation is now complete.