



# TUBULAR DROP SIDE STEPS

(2024+ TACOMA - DOUBLE CAB)

## INSTALLATION INSTRUCTIONS

### CONTENTS

- (1) LH Side Step
- (1) RH Side Step
- (1) LH Front Bracket [DF]
- (1) LH Center Bracket [DC]
- (1) LH Rear Bracket [DR]
- (1) RH Front Bracket [PF]
- (1) RF Center Bracket [PC]
- (1) RF Rear Bracket [PR]
- (12) M8x1.25 x 25mm Combo Bolts
- (12) M8x1.25 x 30mm Bolts
- (12) M8 Lock Washers
- (12) M8 Flat Washers

### TOOLS REQUIRED

12mm, 13mm Socket  
Ratchet

SKU # TT47871

**STEP 1**

Lay out and identify all mounting brackets.

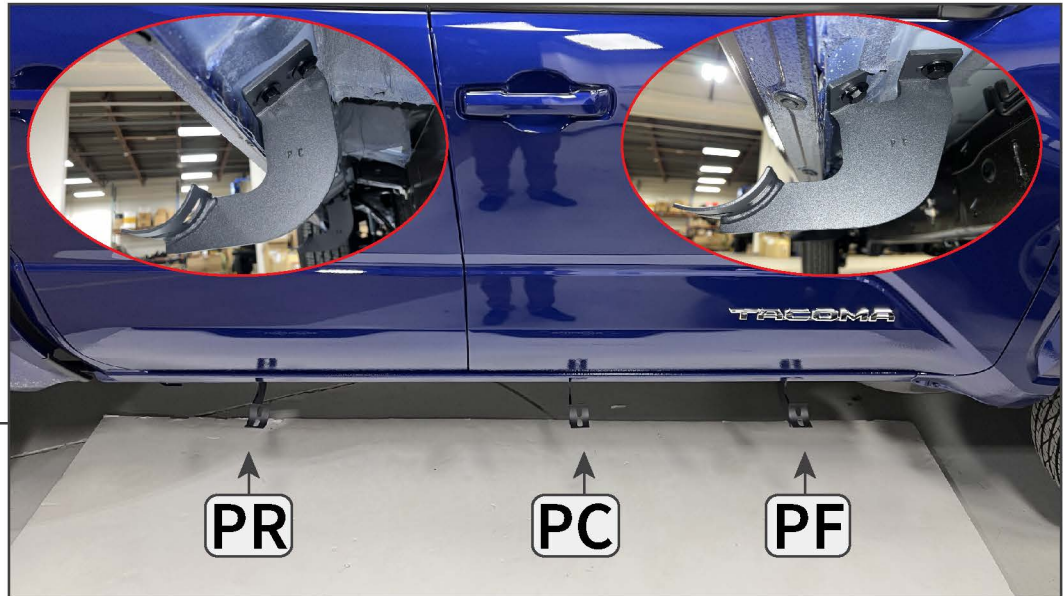
Passenger Rear = PR  
Passenger Center = PC  
Passenger Front = PF

Driver Rear = DR  
Driver Center = DC  
Driver Frpnt = DF

**STEP 2**

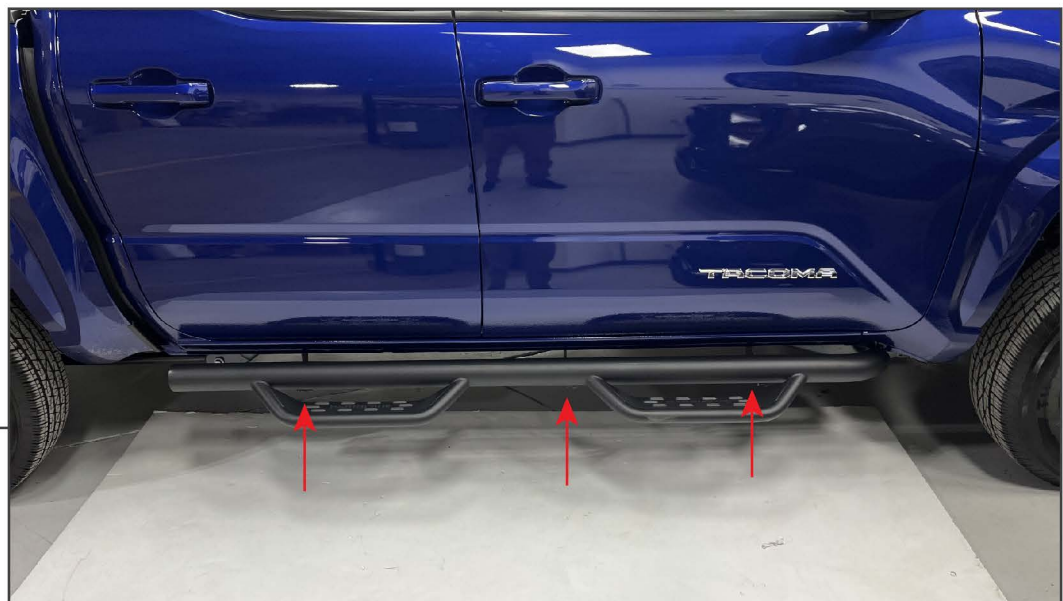
From under the vehicle, locate the threaded bolt holes in the vehicle chassis.

Note: Some vehicles will be equipped with 12mm bolts pre-installed in the threaded inserts.  
Remove the (6) 12mm bolts, if necessary.

**STEP 3**

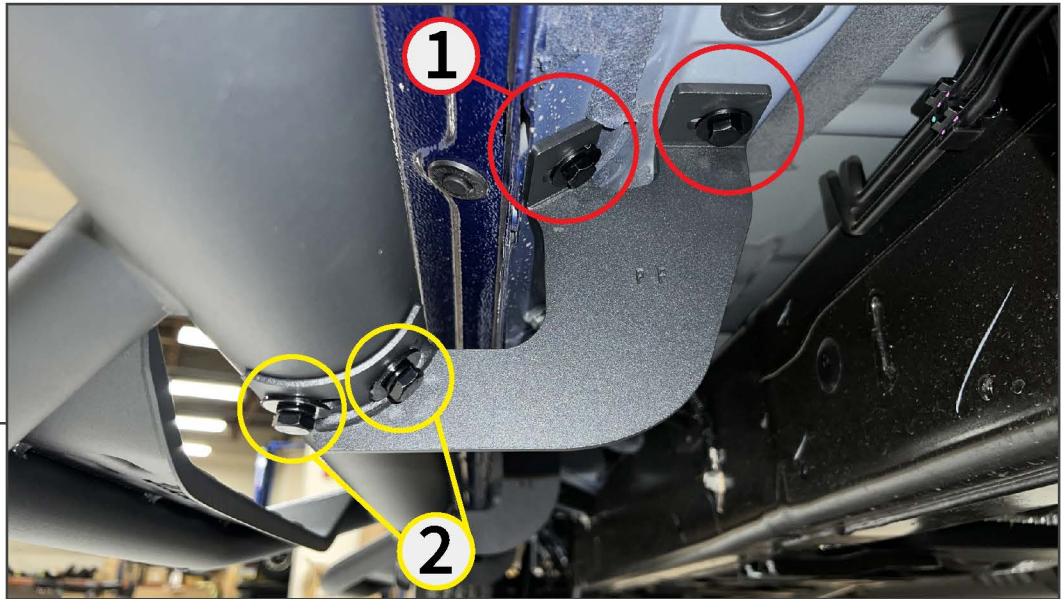
Loosely install the included mounting brackets to the vehicle chassis threaded holes using the included (6) M8 x 30mm bolts, (6) M8 lock washers, and (6) M8 flat washers.

Do not tighten the hardware at this time to allow for later adjustments.

**STEP 4**

Fit the side step to the previously mounted brackets. Loosely secure the side step to the brackets using (6) M8 x 25mm combo bolts.



**STEP 5**

Adjust the side steps & bracket as necessary for best fit, then tighten the mounting hardware to secure into place using the diagram above.

**STEP 6**

Repeat steps 1-5 for the remaining side step.

Installation is now complete.