



MODULAR ROOF RACK

(2024+ TACOMA - DOUBLE CAB)

INSTALLATION INSTRUCTIONS

CONTENTS

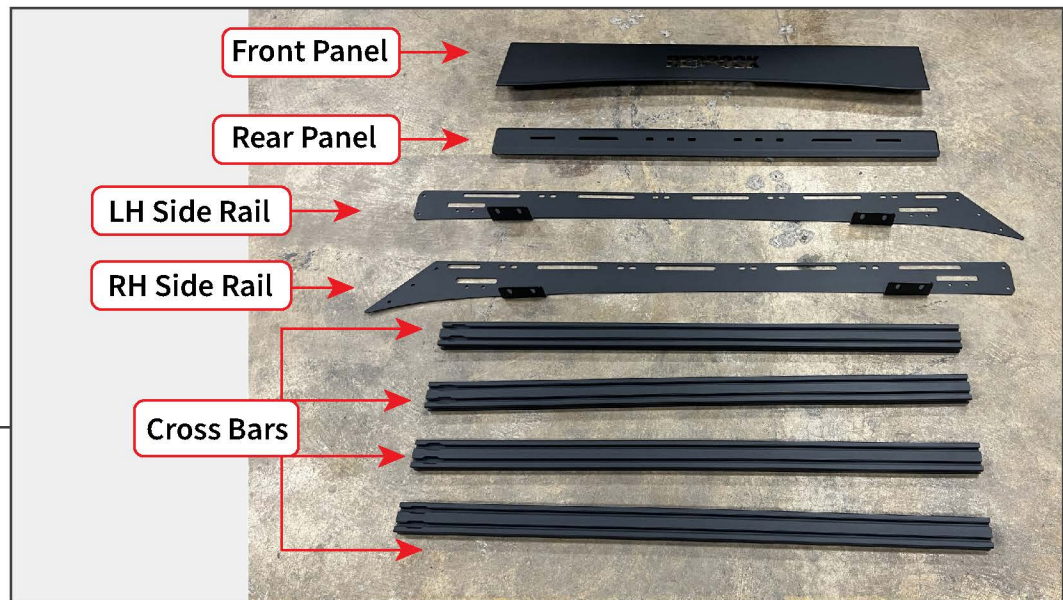
- (1) Front Panel
- (1) LH Side Rail
- (1) RH Side Rail
- (1) Rear Panel
- (4) Cross Bars
- (2) 10mm Thickness Spacer Blocks
- (2) 14mm Thickness Spacer Blocks
- (8) M6x1.00 x 30mm Allen Bolts
- (8) M6 Lock Washers
- (8) M6 Flat Washers
- (34) M8x1.25 x 25mm Allen Bolts
- (34) M8 Lock Washers
- (44) M8 Flat Washers
- (10) M8 Nuts
- (8) M8x1.25 x 15mm Eyelets
- (8) M8 'T' Slot Threaded Inserts
- (1) 4mm Allen Key
- (1) 5mm Allen Key

TOOLS REQUIRED

- 13mm Socket/Wrench
- 4mm, 5mm Allen Keys/Sockets
- Ratchet
- Plastic Pry Tool
- Razor Knife

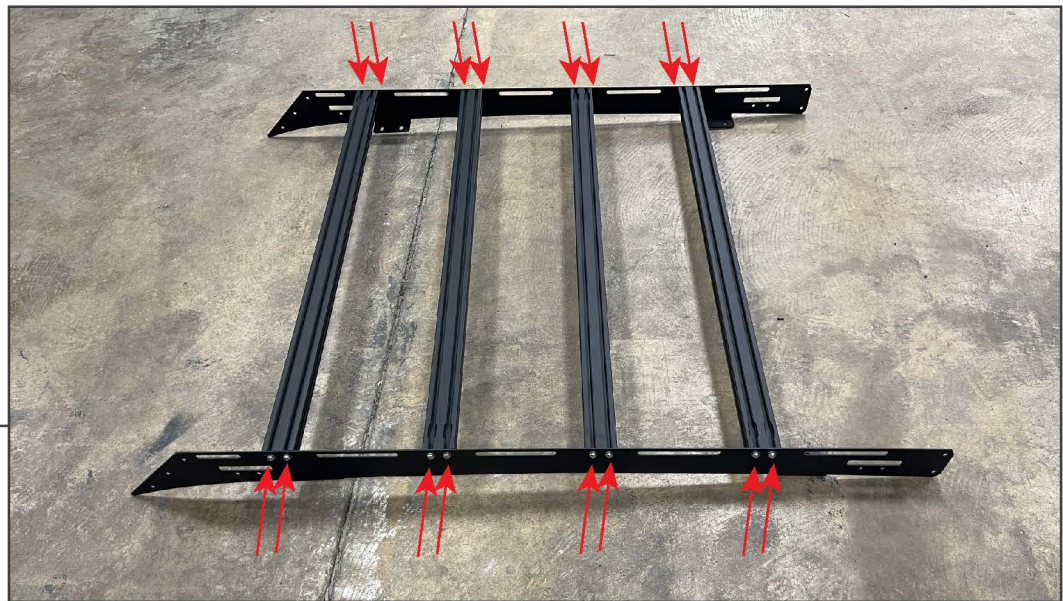
SKU # TT47220
Edited: 02/22/2024

STEP 1



Lay out and identify all roof rack components.

STEP 2



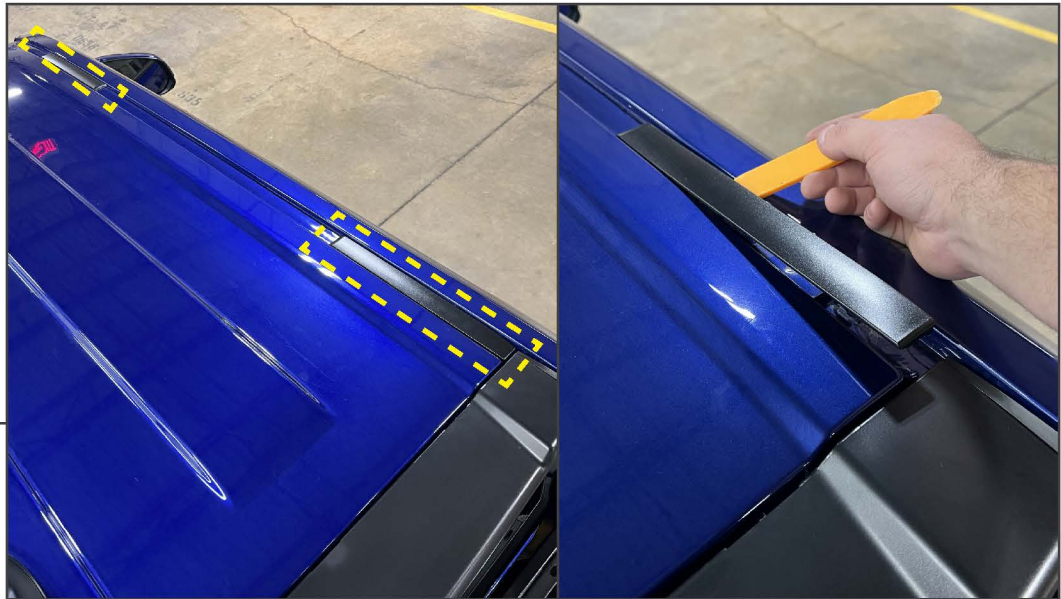
Fit the (4) cross bars between the LH and RH side rails. Then, secure the cross bars to both side rails using (16) M8 x 25mm bolts, (16) M8 lock washers, (16) M8 flat washers. Tighten evenly until secure.

STEP 3

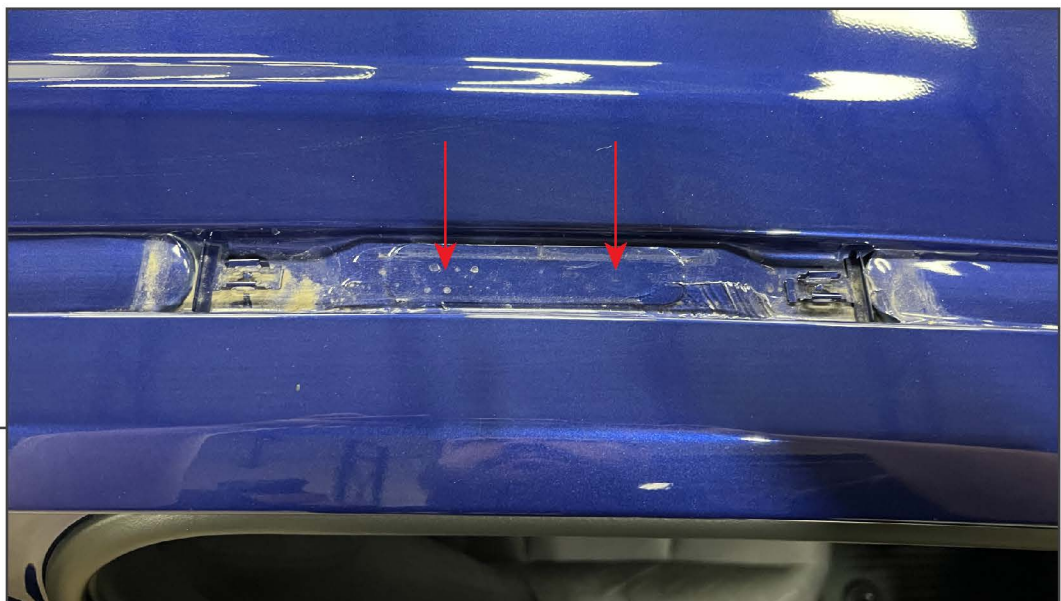
Fit the (1) front panel between the front of the side rails. Then, secure the front panel to the side rails using (6) M8 x 25mm bolts, (6) M8 lock washers, (12) M8 flat washers, and (6) M8 nuts. Tighten evenly until secure.

STEP 4

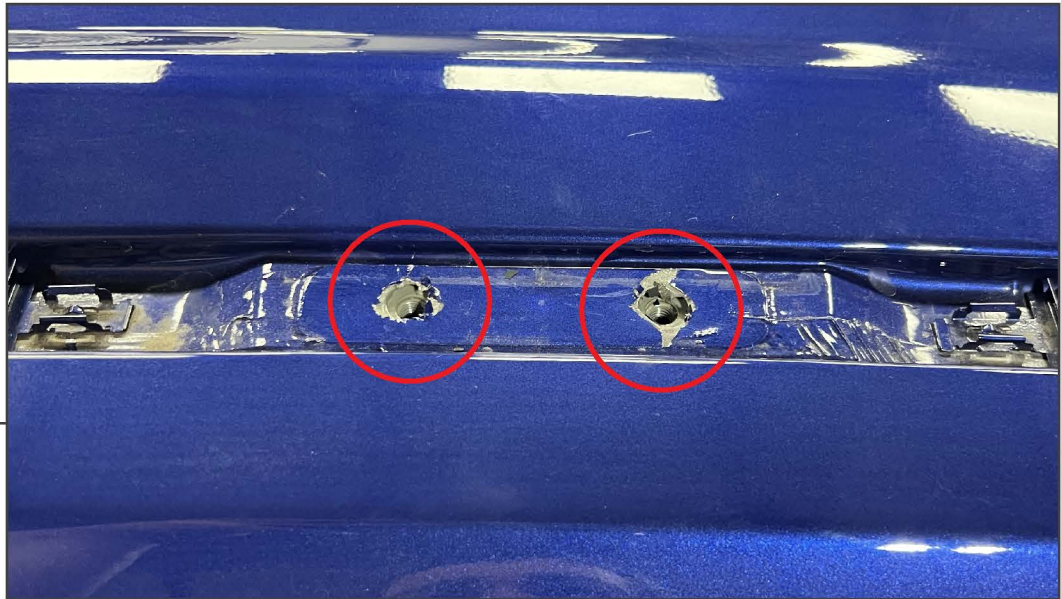
Fit the (1) rear panel between the rear of the side rails. Then, secure the rear panel to the side rails using (4) M8 x 25mm bolts, (4) M8 lock washers, (8) M8 flat washers, and (4) M8 nuts. Tighten evenly until secure.

STEP 5

Above the vehicle doors along on the roof, locate the (2) plastic covers per side. Using a plastic panel removal tool, lift the covers away from the vehicle.

STEP 6

Under the plastic cover is painted double sided tape. Press the tape downwards to locate the bolt holes under the tape.



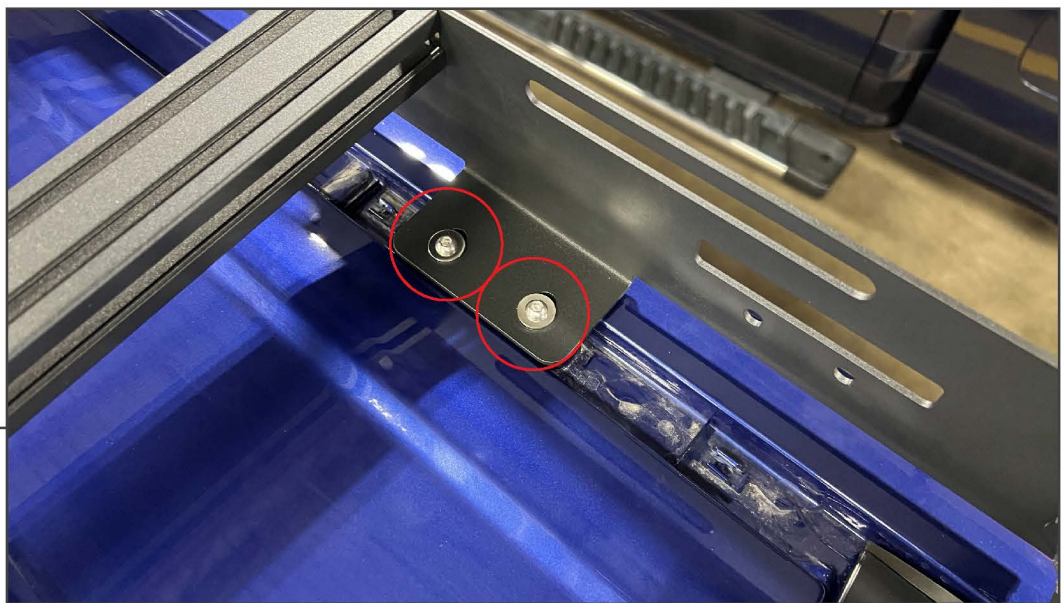
STEP 7

Using a razor knife, carefully cut a circle to reveal the threaded holes in the vehicle roof.

With the threaded holes accessible, place (1) roof rack spacer above the bolt holes. Ensure the bolt holes in the spacer align with the vehicle bolt holes.

The 10mm thick spacers fit to the front of the vehicle.

The 14mm thick spacers fit to the rear of the vehicle.



STEP 8

With a helper, lift the roof rack assembly onto the vehicle roof. Secure the roof rack to the vehicle utilizing the roof threaded holes using (8) M6 x 30mm bolts, (8) M6 lock washers, and (8) M6 flat washers. Tighten the hardware evenly until the roof rack is secure.



STEP 9

Utilize the remaining M8 eyelets and threaded inserts to add tie down points to the cross bar T-Slot system. Ensure all hardware is fully tightened.

Installation is now complete.