



Installation Instructions

FITS: 16-20 Toyota Tacoma

Front Bumper
Part #: TT35931

TOOLS NEEDED

Ratchet 14mm Socket	17 Mm Socket	14 Mm Socket	Plastic Clip Removal
3/16 Hex Head Screwdriver	10 Mm Socket	10 Mm Open End Wrench	13 Mm Socket
Plastic Cutting Shears	White Marker	Masking Tape	

COMPONENTS & HARDWARE

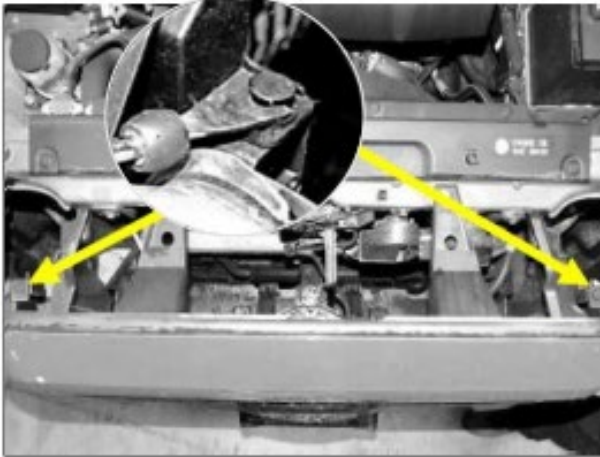
Hardware #	Desc.	QTY	IMAGE
	Passenger Side Wing	1	
	Center Bumper	1	
	Driver Side Wing	1	
	Skid Plate	1	
	Cube Light Bracket	2	
	Light Bar Bracket	2	

E40-10-0077	M8x25mm Hex Head Bolt	10		E40-13-0029	M6x16mm Button Head Bolt	2	
E40-12-0053	M8 Larger Washer	10		E40-10-0043	M6x16mm Hex Head Bolt	4	
E40-12-0018	M8 Split Washer	10		E40-11-0006	M6 Lock Nut	6	
				E40-12-0025	M6 Flat Washer	6	

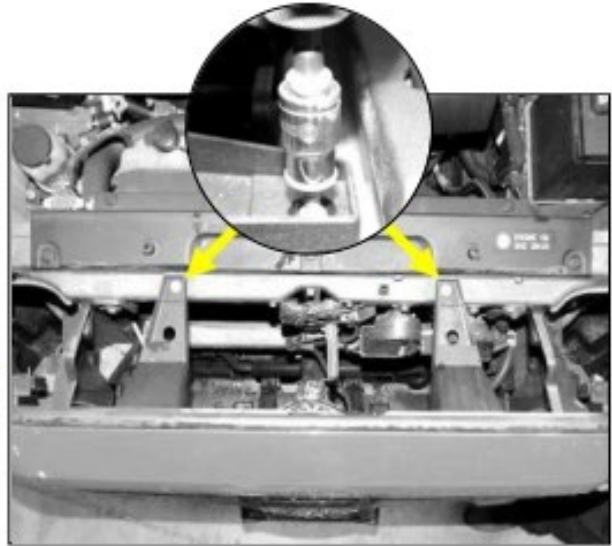
California Proposition 65 Warning!

This product may contain one or more chemicals known to the State of California to cause cancer and birth defects or other reproductive harm. For more information go to www.P65Warnings.ca.gov.

Removing Factory Grille



Step 1.
Open vehicle hood. Using a plastic clip removal tool or similar tool locate and remove 2 factory clips indicated above. Set factory clips aside for later use.



Step 2.
Using a 10mm socket locate and remove 2 factory bolts securing the factory grille onto the vehicle. Set factory hardware aside for later use.

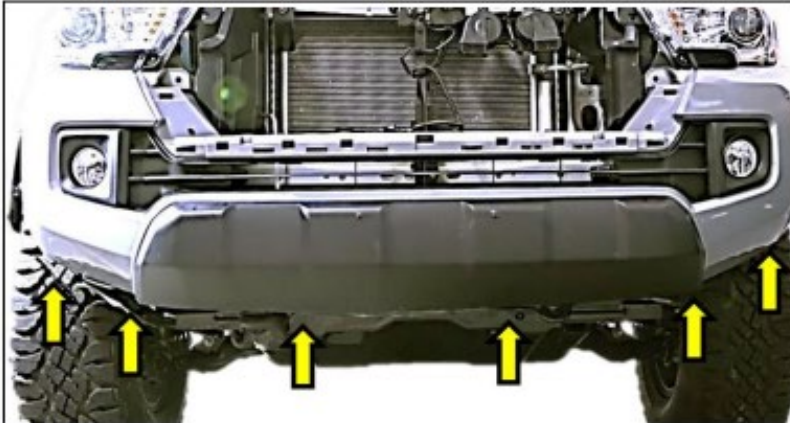


Step 3
If vehicle is equipped with front sensor, camera, unplug wiring harness and push down on retaining rivets to release wiring harness.



Step 4
With all bolts and rivets removed, firmly grab and pull factory grille to release the grill from factory clips along lower edge of grille. Set grill aside in safe location for later use.

Removing Factory Bumper Continued



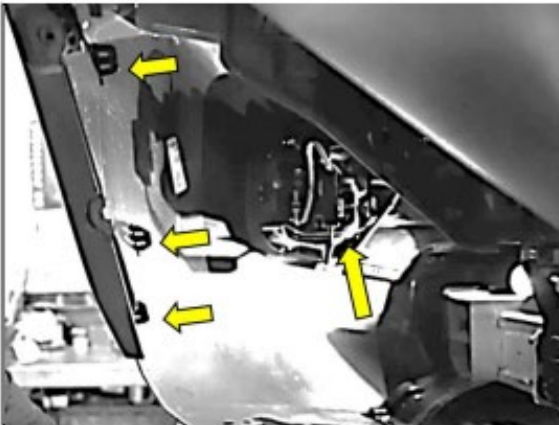
Step 5

Working under the vehicle, using a 10mm socket locate and remove 6 factory bolts located along the bottom edge of the bumper cover. Set hardware aside for reuse



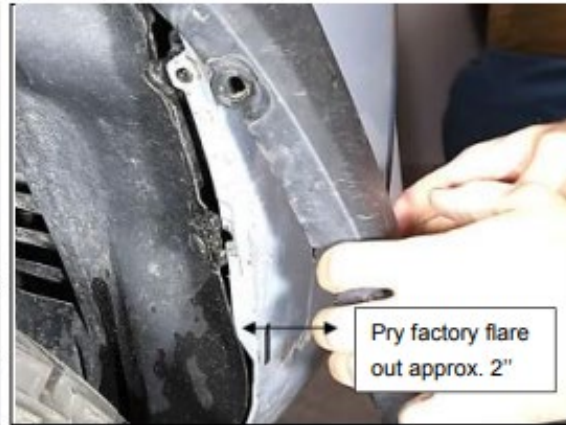
Step 6

Proceed to the fender well. Using a 10mm socket remove 1 factory bolt. Remove one plastic twist lock clip using a flat head screwdriver. Save all hardware.



Step 7

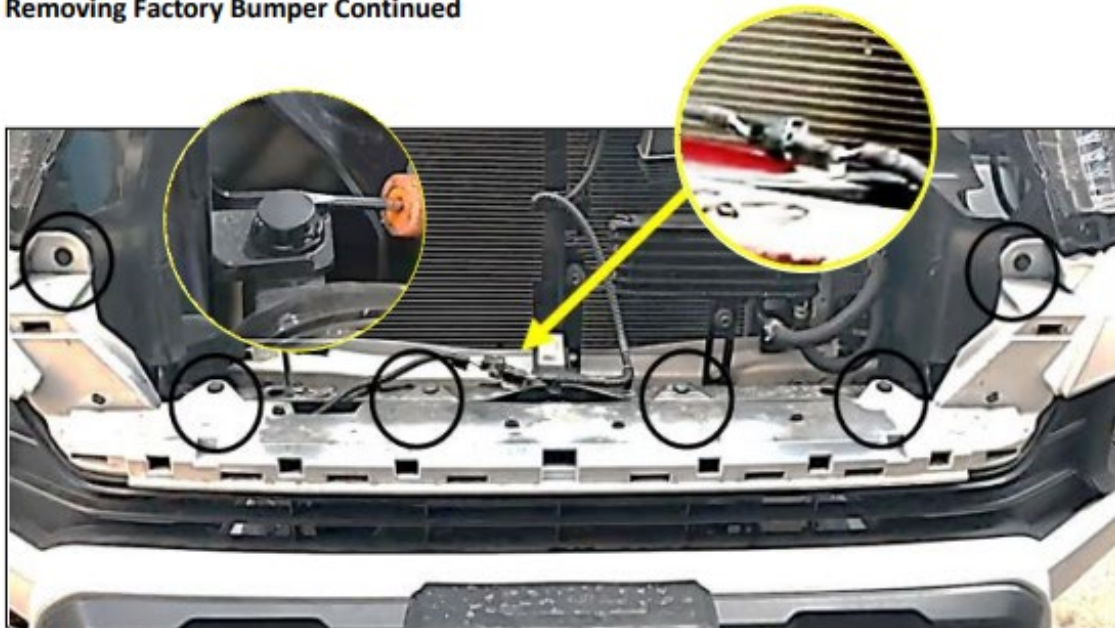
Pry back the fender liner to access the fog light plug and fender flare tabs. Reach in unplug the fog light and unclip the 3 fender flare tabs.



Step 8.

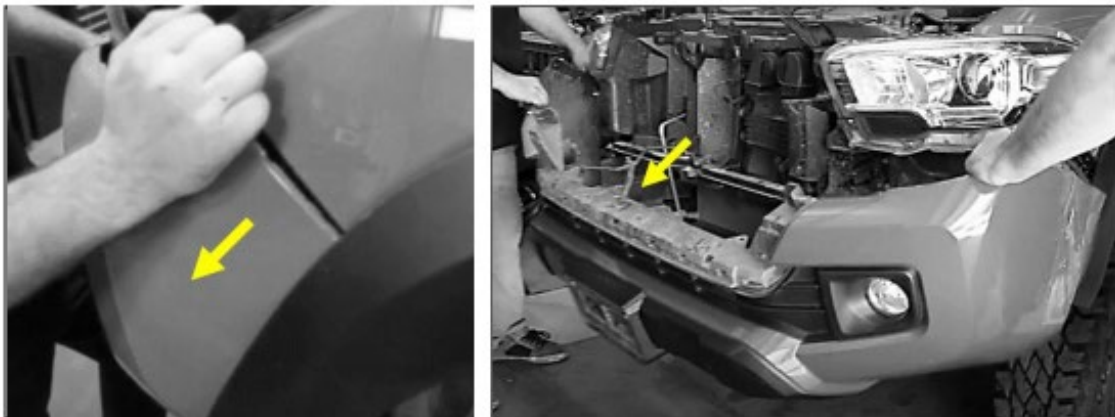
Firmly grip the fender flare and pry it away from the bumper cover. Repeat step 6 and 7 for the other side of the vehicle

Removing Factory Bumper Continued



Step 9

Using rivet tool remove 6 factory plastic rivets as shown. Disconnect the wiring harness. Set rivets aside for later use.



Step 10

Proceed to the driver and passenger side wheel well. Pull the bumper cover away from the fender. With the help of an assistant firmly grab hold of the bumper cover and pull it away from the truck body. Set bumper cover on a padded work bench to prepare for bumper cover modification.

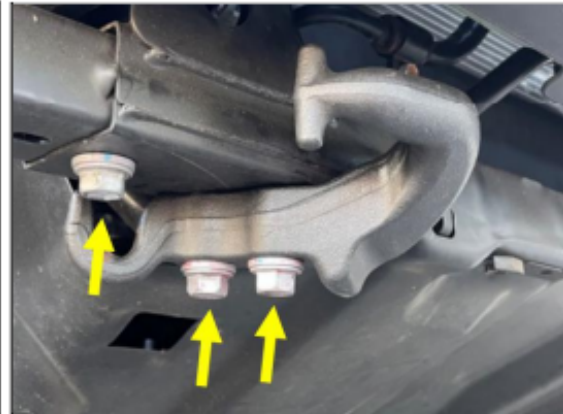
Removing Factory Bumper Continued



Step 11

Using a 14mm socket remove 6 flange nuts (3 on each side of the frame horns) Remove and discard the aluminum crash bar. Retain factory hardware for re-use.

NOTE: Removing the black plastic impact shield in front of the crash bar is not necessary

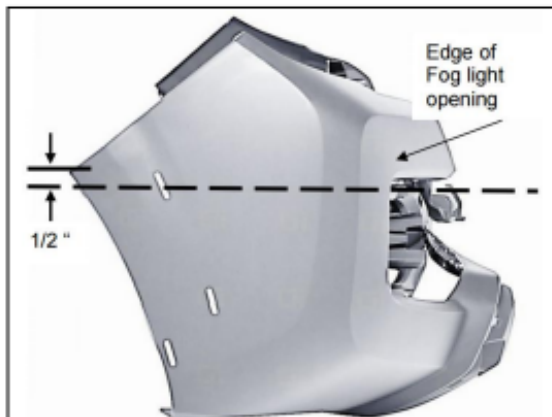


Step 12

If your truck is equipped with a factory tow hook on the passenger side it needs to be removed. Using a 17mm socket remove 3bolts securing the factory tow hook. Discard the tow hook and hardware.

Mark Factory Bumper Cover for Trimming

IMPORTANT NOTICE: There is no way to remedy the situation if you cut too much plastic and there is a unsightly gap once the bumper is installed. Therefore, if you are not experienced in trimming plastic, add an extra 1/4" to all the dimensions shown below. This will allow for a final adjustment using a grinder to achieve a perfect fit



Step 1

Measure 1/2" down from the corner of the bumper cover. Draw a line from the corner of the bumper cover to the edge of the fog light opening.



Step 2

Stick masking tape below the line drawn in step xx and continue the masking tape along the front face of the bumper cover

Mark Factory Bumper Cover for Trimming Continued



Step 3

Continue sticking masking tape along the front face of the bumper cover just under the lower edge of the lip where the vehicle Grill lands and snaps onto the bumper cover. Repeat steps x and x for the other side of the cover. When this step is complete your bumper cover should look like the image shown below.

The dotted line indicates the path you will follow to trim the bumper cover.

Trimming Factory Bumper Cover and Fender Flares (if equipped)



Step 1

Once the bumper is marked and taped it's time to trim the part., Take your time and proceed carefully Start at one end of the bumper cover. Using an electric grinder with a metal cutting disk trim the plastic using the top edge of the masking tape as your guide. When trimming is complete your part should look like the picture shown below. Discard the bottom half of the bumper cover including the factory fog lights.



Trimming Factory Bumper Cover and Fender Flares (if equipped) continued



Step 2

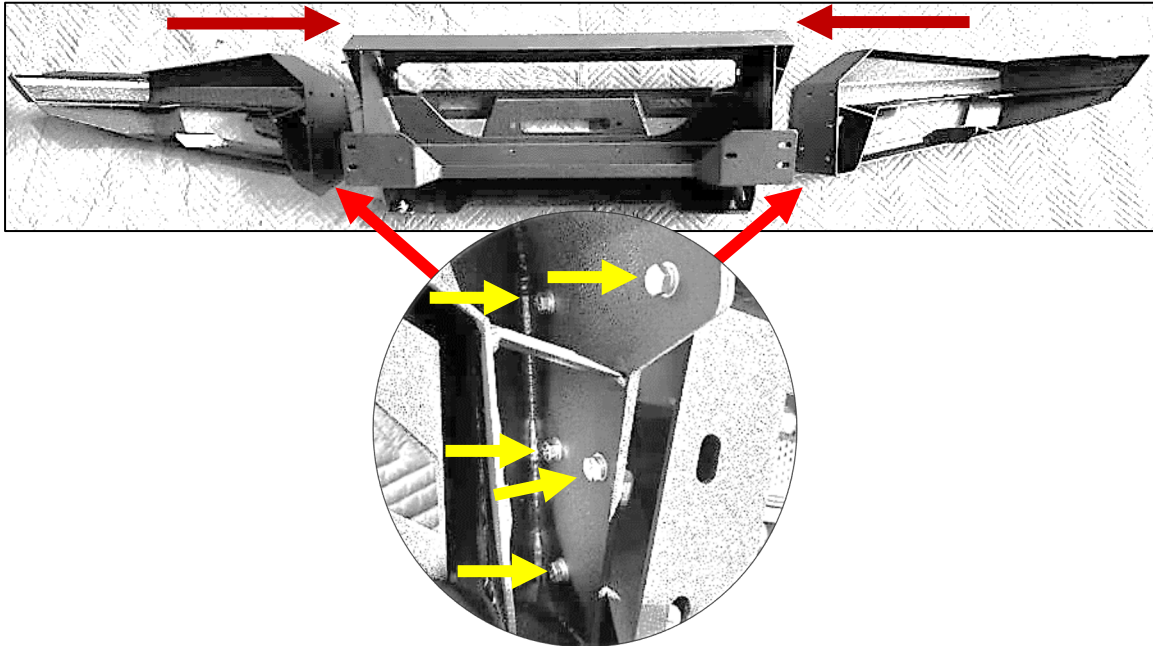
Install the trimmed bumper cover back onto the vehicle by reversing steps 9 and 10 on page 4. Reinstall all factory hardware to secure bumper cover and reconnect electrical plug.



Step 3

Trim Factory flares if equipped. Using the bumper cover as your guide mark factory fender flares. Using electric grinder trim flares to match the lower edge of trimmed bumper cover.

Front Bumper Assembly and Installation



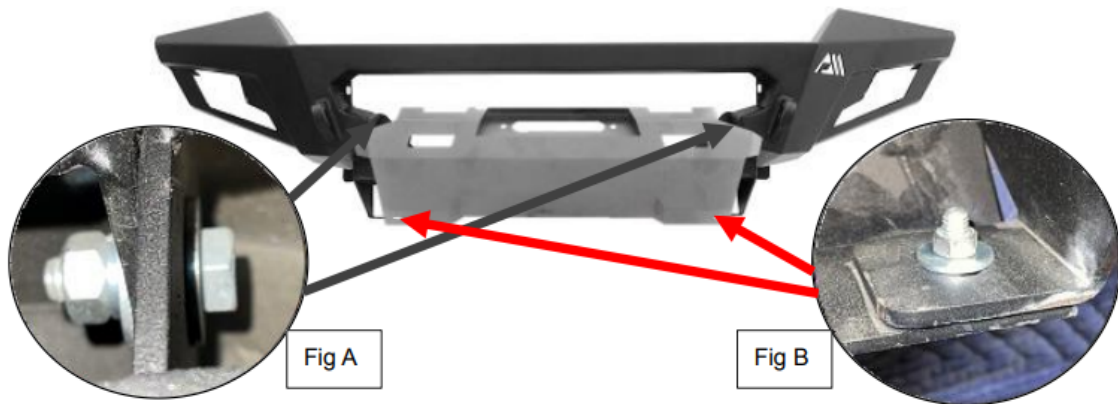
Step 1

Place your new bumper on a padded work bench to protect the finish. Locate the supplied bumper side wings. Place the side wings onto the bumper. Line up the holes in the bumper wings with the bumper side bolts. Hold in place. Locate ten M8x.1.25 hex head bolt, install bolts through the side wing onto the center bumper.

Step 2

Tighten down hardware using a 13mm wrench. Repeat step 1 & 2 for remaining bumper wing. At this time install the winch onto the bumper.

Front Bumper Assembly and Installation continued



Step 3

Place your new bumper on a padded work bench to protect the finish. Locate the supplied skid plate. Place the skid plate into the bumper. Line up the top holes in the skid plate with the holes in the bumper. Line up the bottom holes in the skid plate with the tabs at the lower corners of the bumper.

Step 4

Locate 4 M8 x 25mm bolts. Slide the supplied M8 fender washer onto the bolts.

Step 5

Working on the inside of the bumper push one of the M8 bolts and washer through the top corner hole in the bumper and through the hole in the skid plate. Slide an M8 fender washer and split washer onto the bolt. Start an M8 nut on the bolt. Repeat for the other side. Fig A

Step 6

Push one of the M8 bolts up through the bottom corner hole in the bumper and through the hole in the skid plate. Slide an M8 fender washer and split washer onto the bolt. Start an M8-1.25 nut on the bolt. Repeat for the other side. Fig B



Step 7

Locate supplied U bracket. Install 2 M6x25mm hex head bolts through the holes in the bracket.



Step 8

Locate cube light (NOT supplied). Push the U bracket through the slots in the cube light. Using a 3/16 Allen head screwdriver secure the U bracket to the cube light with 2 supplied M6x20mm hex head bolts with supplied flat washer and spring washer Repeat step 1 and 2 for other light.

Front Bumper Assembly and Installation continued



Step 9.
Proceed to the bumper on your padded work bench. Position cube light onto mounting bumper mounting plate. Push the two mounting bolts through the holes in the plate.



Step 10.
Slide an M6 flat washer onto the bolt Start a supplied M6 lock nut onto the bolt. Tighten using a 10mm socket on one side and open-ended wrench the other.



IMPORTANT NOTICE:

If you intend to install a Winch or Light bar or both you must do so at this point in the installation process. Please follow manufacturer's instructions included with the winch and light bar you purchased.



Step 11
With the help of an assistant lift and place the bumper onto the factory studs on the frame horns.



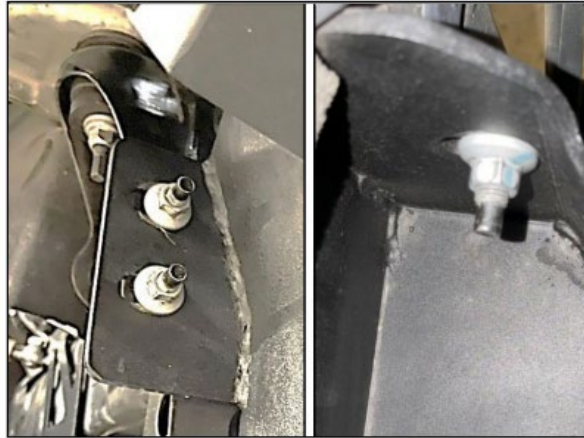
Step 12
Start a factory nut onto the mounting studs on both sides of the bumper. Hand tighten only.

Front Bumper Assembly and Installation continued



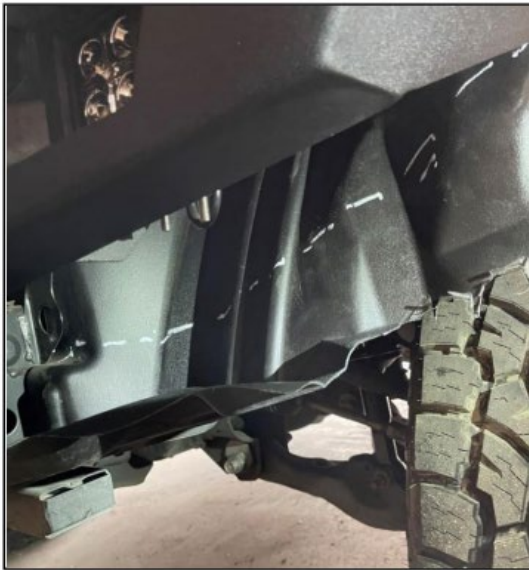
Step 13

Check the fitment between the bumper cover and the bumper and flare (if equipped). Mark areas that need to be trimmed further. Remove the bumper and trim the plastic parts as needed.



Step 14

Reinstall bumper following steps 5 and 6 and recheck plastic parts. Once satisfied with the fit crawl under the vehicle, install 2 factory nuts on the outside of the frame horn and one on the inside. Repeat for the other side of the truck. Tighten using 14mm socket.



Step 15

Mark the factory fender liners with a white marker or grease pencil.



Step 16

Trim fender liner along the marked lines using plastic cutting shears.

Front Bumper Assembly and Installation continued



OPTIONAL STEP

For a clean finished look Remove the extension plate on the cross member. Using a 17mm socket remove one mounting bolt. Slide the plate out. Discard the hardware and the plate. Repeat for the other side of the vehicle.

Step 17

Reinstall the factory Grill by reversing steps 1-4 on page 2.

Step 18

Power the light cubes with the wiring harness.



Congratulations the installation is complete.