

Installation Instruction  
Packaged Grille  
PART NUMBER: TT29372  
FITS Toyota Tacoma  
2012- 2015

## KEY TO COMPONENTS

- A. 1 ea. Grille
- B. 2 ea. Center brackets
- C. 8 ea. Phillip's head screw
- D. 1ea. Wiring harness

## TOOLS NEEDED

Ratchet  
10mm socket  
Plastic rivet removal  
tool or similar tool

A



B



C



D



## ELECTRICAL INSTALLATION



This grill comes complete with a LED light which need to be connected to a power source. Failure to properly make these connections could result in damage to the LED lights and/or your vehicle and may result in personal injury. If you are not qualified to make the proper connections, we highly recommend that you contact an installation expert to complete the connections.



Please take a few minutes to read and thoroughly familiarize yourself with the installation procedures outlined in this manual. Following the steps as outlined will save you time and help reduce mistakes. Once the instructions are reviewed, if you feel that you are not capable of safely installing the parts seek the help of a qualified installation expert to help you complete the job. The manufacture is in no way responsible for any personal injury or vehicle damage that may occur during the installation.

## NOTES ON INSTALLATION

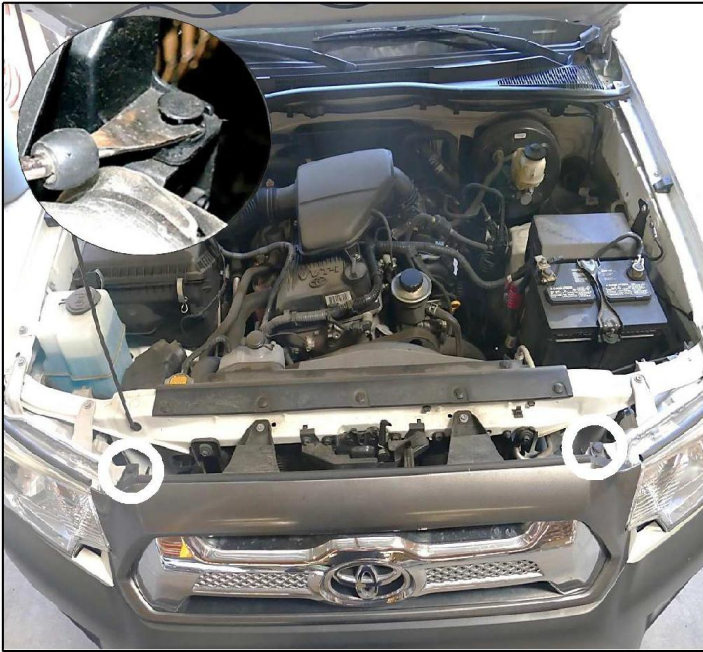
Please read and understand all instructions prior to beginning the installation process.

Pre-fit all panels as you proceed with the installation before attempting to bolt into position. This will enable you to understand exactly how the part is intended to fit onto vehicle.

Do NOT over-tighten screw.

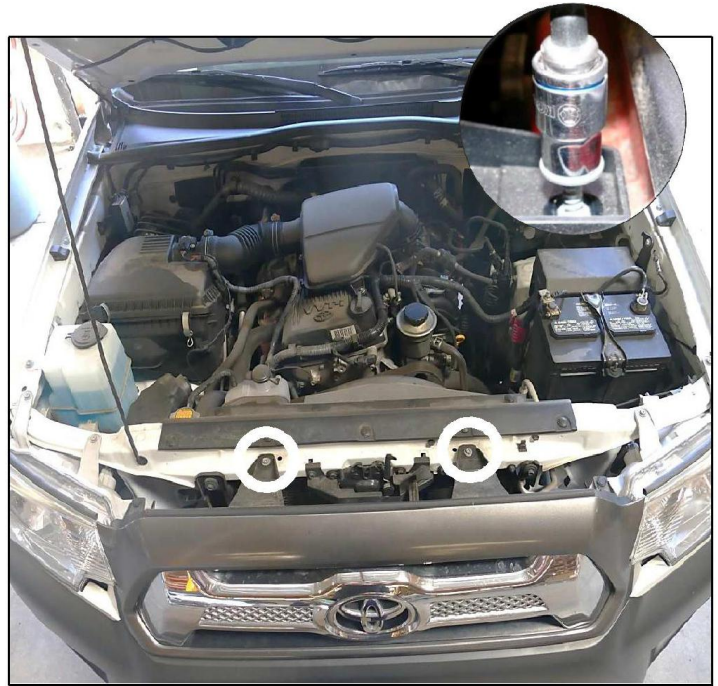
If the instructions call for you to save and re-install parts set them aside in a protected area so as not to damage them.

## FACTORY GRILLE REMOVAL



### Step 1

Open vehicle's hood. Using a plastic removal tool or similar tool locate and remove 2 factory clips circled above holding the factory grille onto vehicle. Save hardware for reinstallation.



### Step 2

Using a 10mm socket locate and remove 2 factory bolts securing the factory grille onto vehicle. Save hardware for reinstallation.

## INSTALLING NEW GRILLE

Product shown below just for reference



### Step 3

Firmly grab and pull factory grille off of vehicle. Discard factory grille.

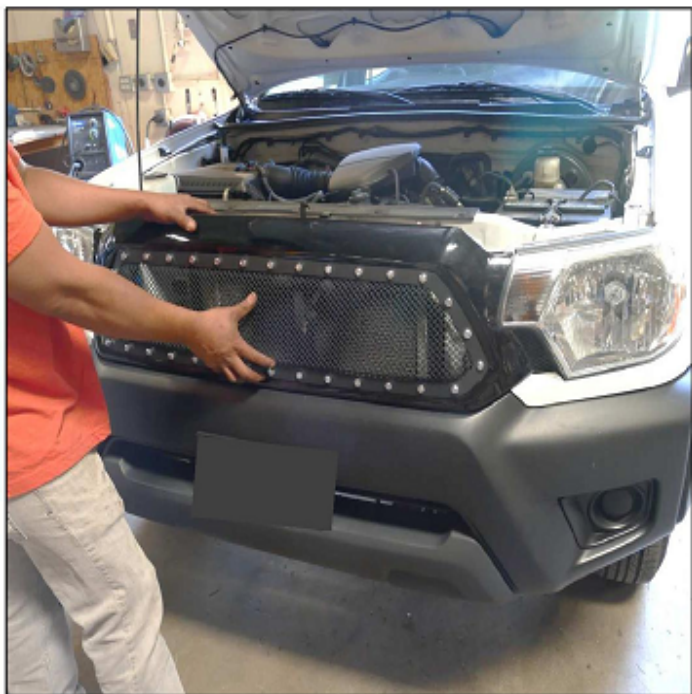


### Step 1

Working on work bench place supplied center mounting bracket (B) onto grille as shown. Line up the holes in the mounting bracket with the holes in the grille. Place a supplied philip's head bolts (C) through the hole in the mounting bracket and onto grille. Repeat step for remaining bolts. Tighten down using a #2 philip's head bolt. Repeat step for other center mounting bracket.



## INSTALLING NEW GRILLE CONTINUED



### Step 2

Place supplied grille (A) onto vehicle as shown. Install grille onto vehicle by reversing steps 1-2 in the removal process.

This completes the installation.