



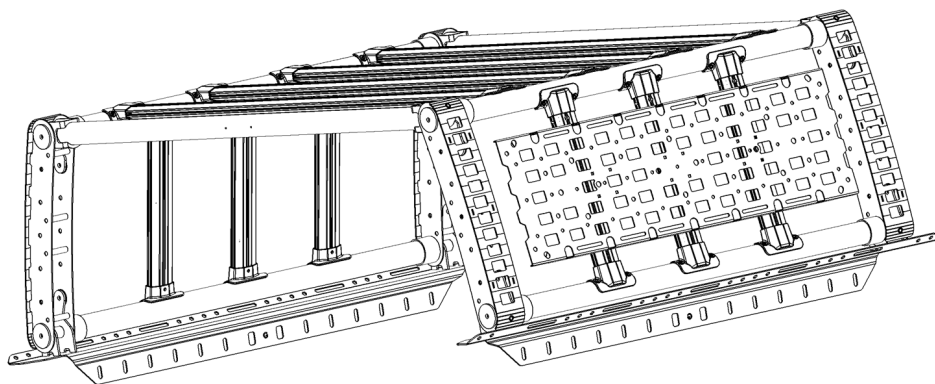
## INSTALLATION INSTRUCTIONS

### PART NO.

- 5950000T
- 5910050T
- 5951000T
- 5952000T

### PRODUCT DESCRIPTION:

- XRS Overland Truck Bed Rack



**IT IS HIGHLY RECOMMENDED TO ASSEMBLE THE RACK AWAY FROM THE VEHICLE, BEFORE DRY-FIT TO BEGIN SECURING THE RACK TO THE VEHICLE**

### PRODUCT SAFETY & LEGAL DISCLAIMER

- **IMPORTANT READ ALL INSTRUCTIONS CAREFULLY BEFORE INSTALLING, FAILURE TO DO SO MAY CAUSE PERSONAL INJURY OR DAMAGE TO PRODUCT AND/OR PROPERTY.**
- **Review the product package and contents prior to beginning the installation.** Take care when opening the packaging and removing items. If a return is needed you will want to return the product in its original packaging if possible.
- This instruction guide is provided as a GENERAL installation guide, some vehicles vary dimensionally and may require additional steps.
- Test fit the product on the vehicle prior to any third party modifications and or finishing. The manufacturer and/or distributors do not accept responsibility for third party charges, labor and or third part replacement modifications. Some modifications may void the factory warranty.
- Exercise due-diligence when installing this product. The manufacturer and distributors of this product do not accept any responsibility for vehicle damage or personal injury resulting from the installation of this product. Careless installation and operation can result in serious injury or equipment damage.
- This product is for general off-road use. All liability for installation and use rests with the owner/operator.
- **INSTALLER:** Once installation is complete, please return this guide along with other documentation included in this product back to the consumer for future reference. The manufacturer/distributors of this product do not guarantee this particular version will be available at a later date.

© 2016 Go Rhino Products. All rights reserved

[www.gorhino.com](http://www.gorhino.com)

589 W. Apollo St., Brea, CA 92821

P: 888 427 4466



# INSTALLATION INSTRUCTIONS

## INJURY HAZARD

Please complete a shop and tool inspection prior to beginning the installation.

- Always make sure you have a clean, dry and well lit work area.
- Always remove jewelry, loose fitting clothing and wear protective gloves and eye protection.
- Always use extreme caution when jacking or raising a vehicle for work. Set the emergency brake and use tire/wheel blocks and jack stands. Refer to the vehicle manufacturer hand book. Utilize the vehicle manufacturers designated lifting points.
- Always use appropriate and adequate care in lifting parts during disassembly and installation. Seek help in lifting heavy or large items into place. Utilize jacks and or lifting devices when available.
- Always insure products are secure during disassembly and installation.
- Always wear eye protection and take steps to protect any exposed skin during the installations. Drilling, cutting and grinding plastic and metal may create flying particles that can cause injury.
- Always use extreme caution when drilling, cutting and or grinding on a vehicle. Thoroughly inspect the area to be drilled, on both sides of material, prior to modification and relocate any objects that may become damaged.
- Always assemble and tighten all fasteners per the installation instructions.
- Always route electrical cables carefully. Avoid moving parts, parts that may become hot and rough or sharp edges.
- Always insulate and protect all exposed wiring and electrical connections.

## MAINTENANCE AND CARE

- Always perform regular inspections and maintenance on mounts and related fasteners.
- Periodically check and tighten all fasteners.
- Stripped, fractured, or bent fasteners must be replaced.
- After washing the vehicle make sure to fully dry all surfaces.
- In areas with cold temperatures make sure to wash the product often to remove harmful materials used on road ways.
- Never use abrasive cleaners or polish compounds. Clean with a gentle soap and water. If you use wax use a non-abrasive automotive wax such as pure carnauba wax.

## WARNING

Some products have been designed to work together with factory rear sensor systems, factory forward facing sensor systems and factory air bags.

- Installation of some of these products may alter the factory sensor system performance.
- Factory sensors may read shackles or hooks protruding from the fairlead and or tow hooks.
- All sensor testing is completed by Go Rhino Products and or third party testing labs on modified vehicles.
- Sensor sensitivity, factory sensor housing, orientation, and operating conditions are all variables that will influence functionality of the sensors.
- Installation of some product may effect the factory air bag systems.
- Some products allow the use of third party products such as winches, shackles, hooks, etc. Follow the respective manufacturers operating instructions for use with our products.
- Make sure to fully understand the product, it's intended use and operation prior to use.
- Above all... be safe!

## WEIGHT LIMITS

Each vehicle will have a maximum dynamic weight limit determined by the manufacturer. Determining and adhering to the maximum dynamic weight limit of your vehicle as specified by the manufacturer is crucial for safe operation. This limit includes both the weight of any rack system installed on your vehicle and the weight of the load being carried. Exceeding this limit can compromise the vehicle's stability, handling, and overall safety. It's important for the installer or end user to carefully review the manufacturer's guidelines and specifications to ensure that they do not exceed these operational limits, thereby maintaining safety for themselves and others on the road.

- Dynamic weight rated to support up to 300 lbs., evenly distributed
- Static weight rated to support up to 600 lbs., evenly distributed.

# GO RHINO®

## INSTALLATION INSTRUCTIONS

IT IS HIGHLY RECOMMENDED TO ASSEMBLE THE RACK AWAY FROM THE VEHICLE, BEFORE DRY-FIT TO BEGIN SECURING THE RACK TO THE VEHICLE

### PARTS INCLUDED IN THIS LIST:

ITEM	QTY	DESCRIPTION
1	2	Upper Connecting Tubes (w/ logo)
2	2	Top Connecting Tubes (single weep hole)
3	2	Bottom Connecting Tubes ( two weep holes)
4	4	Vertical Upright
5	4	Upper Multi-Core Cross bars (long)
6	6	Side Multi-Core Cross bars (short)
7	8	Threaded Anchor Plates
8	1	Molle Accessory Plate
9	1	Bed Rail Feet (Pair)
10	12	Bed Track Mounting Plates
11	6	Bed Rail Clamp
12	8	Spacer Plate

### HARDWARE INCLUDED IN THIS LIST:

ITEM	QTY	UNIT	DESCRIPTION	TORQUE
1	6	PCS	HEX BOLT 1/4 X 3/4"	12 ft. lbs
2	6	PCS	HEX NUT 1/4"	
3	8	PCS	HEX BOLT 3/8"X4"	42 ft. lbs
4	8	PCS	BUTTON SCREW 1/4"X3/4"	12 ft. lbs
5	14	PCS	FLAT WASHER 1/4"	
6	14	PCS	LOCK WASHER 1/4"	
7	16	PCS	HEX BOLT 3/8"X1"	42 ft. lbs
8	40	PCS	FLAT WASHER 3/8"	
9	24	PCS	LOCK WAHSE 3/8"	
10	16	PCS	HEX NUT 3/8"	
11	12	PCS	CARRIAGE BOLT 5/16"X1 1/2"	25 ft. lbs
12	12	PCS	FLAT WASHER 5/16"	
13	12	PCS	LOCK WASHER 5/16"	
14	12	PCS	HEX NUT 5/16"	
15	16	PCS	ABS WASHER 1/16" 2 1/4"	
16	16	PCS	ABS WASHER 1/16" 1 1/2"	
17	2	SETS	OUTER FOAM GASKETS	
18	6	PCS	CENTER FOAM GASKETS	
19	40	PCS	BUTTON HEAD SEMS BOLT 1/4"	

Go Rhino recommends you, the installer, read this installation instruction manual from front to back before installing the product. You may also [click here](#) to view an installation video or visit <http://www.gorhino.com/Installation-Videos>.

### TOOLS NEEDED FOR INSTALLATION:

- ½ Wrench or Sockets
- 4MM Allen Key
- 9/16 Wrench or Sockets

### ESTIMATED TIME FOR INSTALLATION:

3-4 Hours

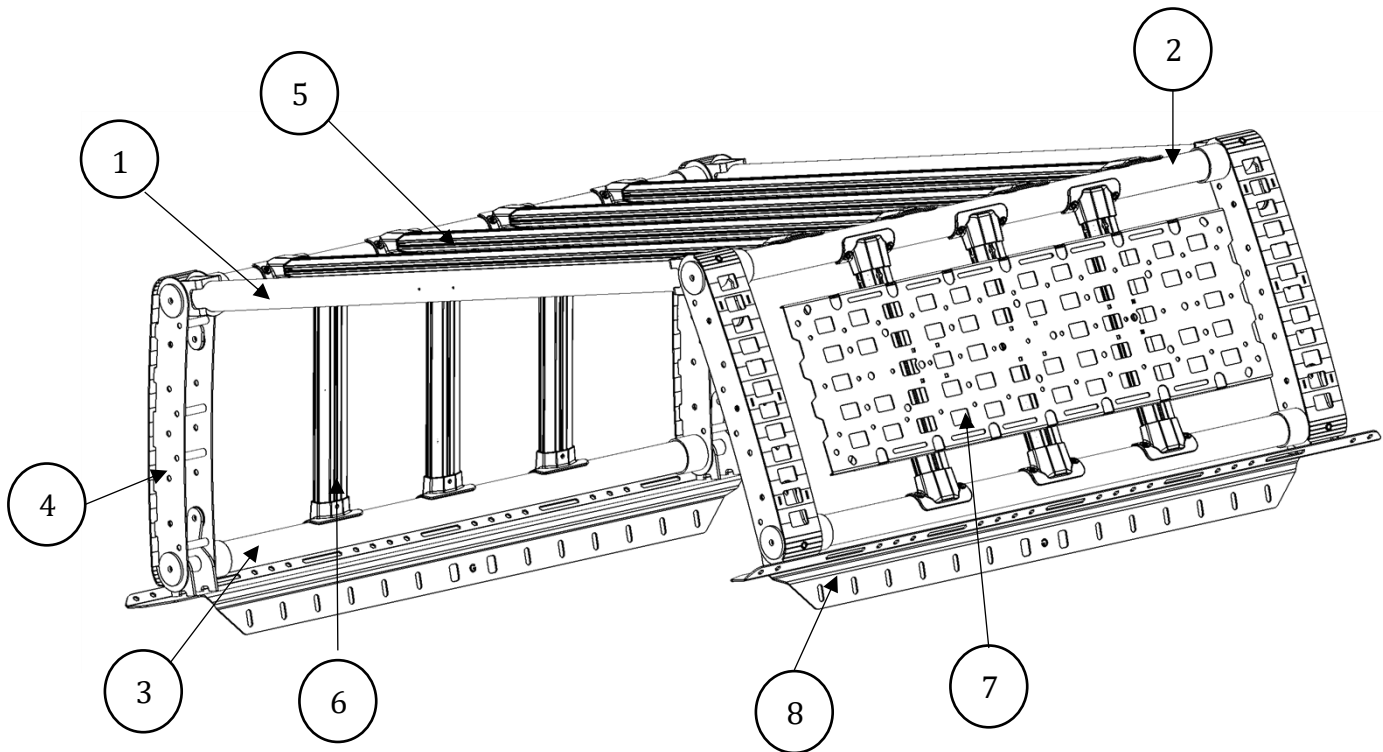
If you need installation service for your new product, call the authorized distributor from whom you purchased the product or an authorized installation service company which can be found by calling toll free 1-888-427-4466

- On-Road Dynamic Weight Capacity | 300
- Parked Static Weight Capacity | 600



## INSTALLATION INSTRUCTIONS

IT IS HIGHLY RECOMMENDED TO ASSEMBLE THE RACK AWAY FROM THE VEHICLE, BEFORE DRY-FIT TO BEGIN SECURING THE RACK TO THE VEHICLE

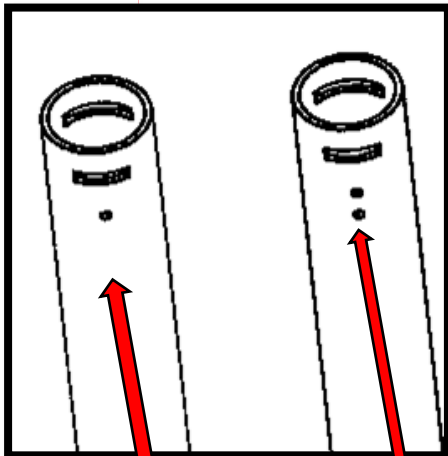
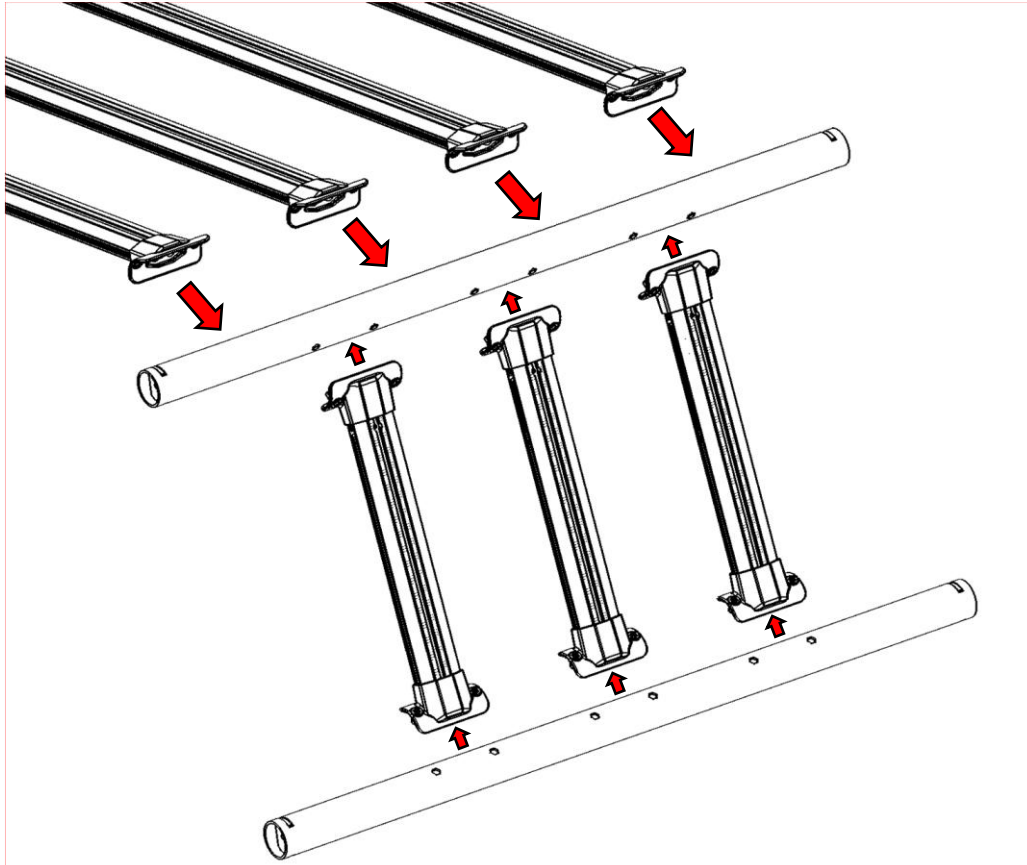


ITEM	QTY	DESCRIPTION
1	2	Upper Connecting Tubes (w/ logo)
2	2	Upper Connecting Side Tubes (single weep hole)
3	2	Lower Connecting Side Tubes (two weep holes)
4	4	Vertical Upright
5	4	Upper Multi-Core Cross bars (long)
6	6	Side Multi-Core Cross bars (short)
7	1	Molle Accessory Plate
8	1	Rack Mounting Feet Rails (Pair)



## INSTALLATION INSTRUCTIONS

### Step 1



Attach the Upper Multi-Core Cross Bars (long) to the top connecting tube (with a single weep hole) using  $\frac{1}{4}$ " x  $\frac{3}{4}$ "-20 SEMS Button Head Bolts.

Attach the Side Multi-Core Cross Bars (short) to both the top connecting tube (single weep hole) and the bottom connecting tube (two weep holes) using the same  $\frac{1}{4}$ " x  $\frac{3}{4}$ "-20 SEMS Button Head Bolts.

Repeat this process for both sides of the assembly.

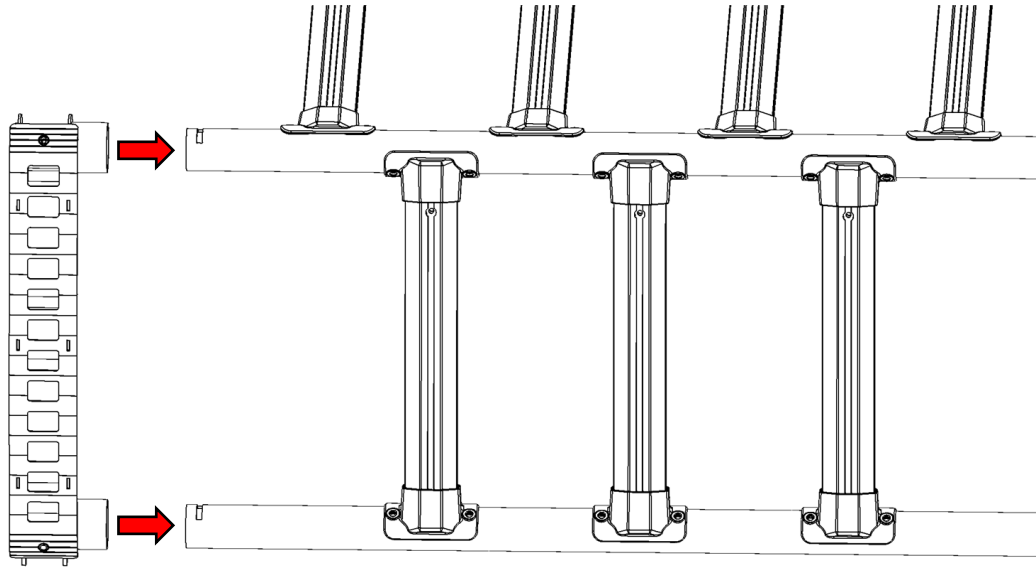
Single weep hole= top  
connecting tube

two weep holes= bottom  
connecting tube

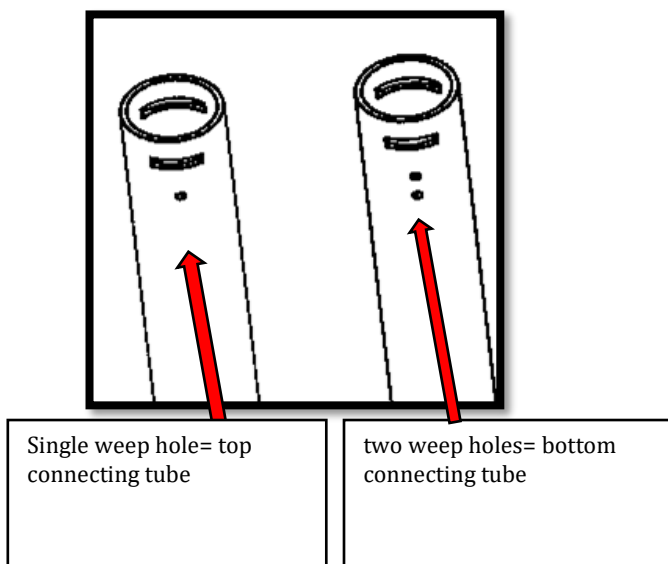


## INSTALLATION INSTRUCTIONS

### Step 2



Attach the vertical uprights to the upper and lower connecting tubes. Ensure the top tube (with one weep hole) and the bottom tube (with two weep holes) are correctly positioned.







## INSTALLATION INSTRUCTIONS

### Step 3

- Align and Insert:

Position the vertical uprights so the logos face outward. Insert the U-section of the upper connecting tube into the upright.

- Bolt Installation:

Slide a 3/8" x 4" hex head bolt through the following components in order:

- 3/8" lock washer
- 3/8" spacer plate
- Upright tube
- Two (2) 2 1/4" vinyl washers (one on each side of the connecting tube)

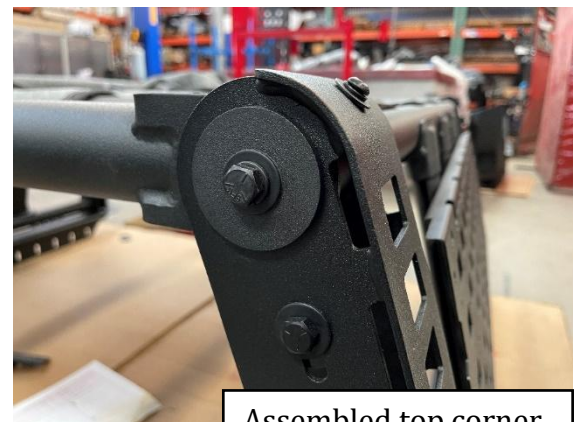
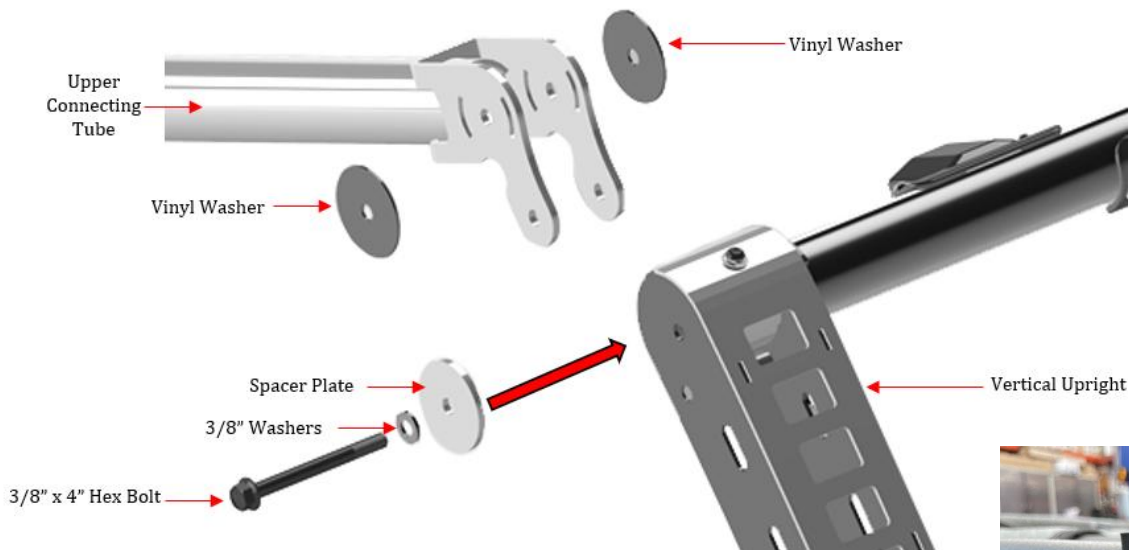
**1.Repeat:**

Repeat this process for all four corners.

**2.Installation Tip:**

Use painter's tape to temporarily hold the vinyl washers in place during assembly.

**Note:** Depending on fit tolerance, you may use one (1) vinyl washer instead of two when attaching the upright to the logo crossbar.



Assembled top corner



## INSTALLATION INSTRUCTIONS

### Step 4

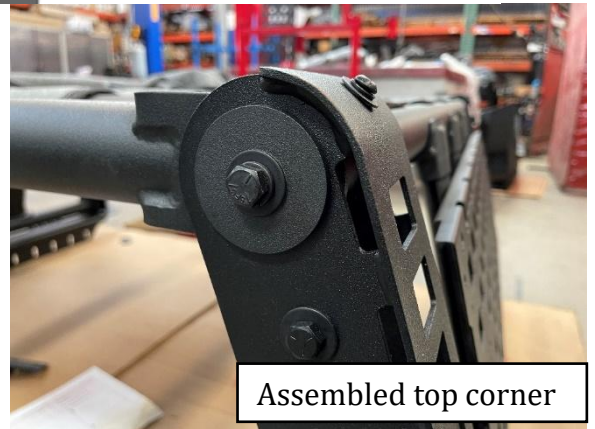
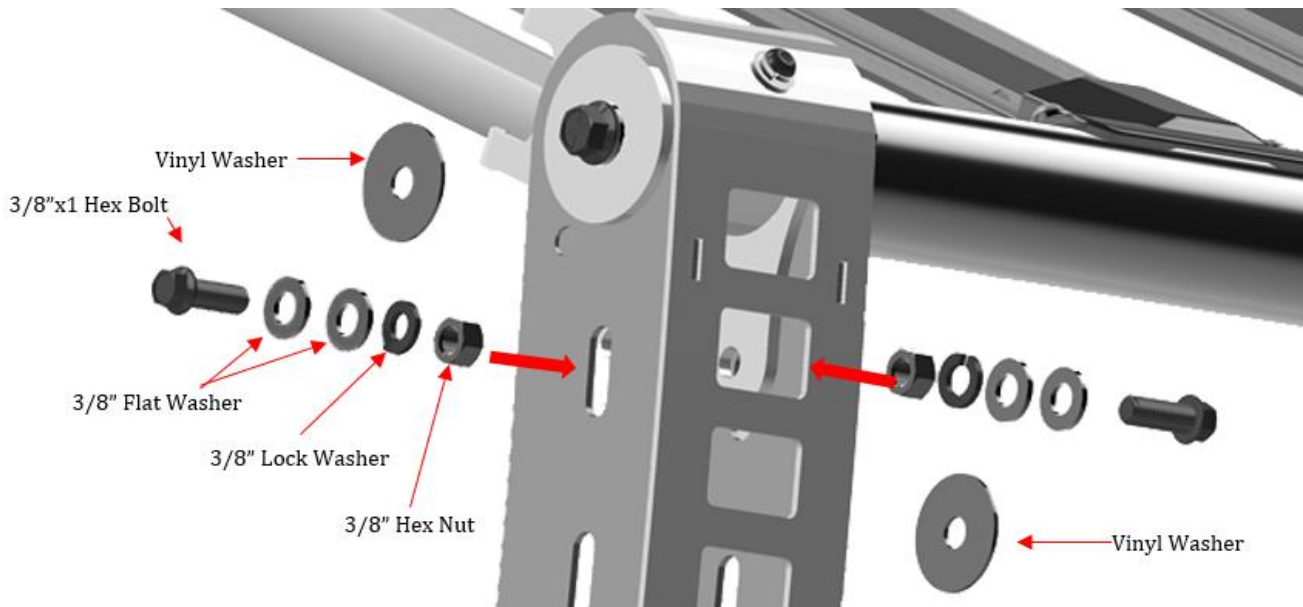
For each upright, use the following hardware:

- 2 pcs 3/8" x 1" hex bolts
- 4 pcs 3/8" flat washers
- 2 pcs 3/8" lock washers
- 2 pcs 3/8" hex nuts
- 2 pcs 1½" vinyl spacers

Step-by-Step Instructions:

1. Insert the hex bolt from the outside of the upright, placing one flat washer under the bolt head.
2. On the inside of the upright, slide on a 1½" vinyl spacer, followed by one flat washer, one lock washer, and one hex nut.
3. Leave all fasteners finger-tight for now.
4. Repeat this process for the remaining three corners.

Note: Due to manufacturing tolerances, you may use one (1) vinyl washer in place of a spacer when assembling the upright and logo crossbar.







## INSTALLATION INSTRUCTIONS

### Step 5

#### 1. Bottom Hole Installation:

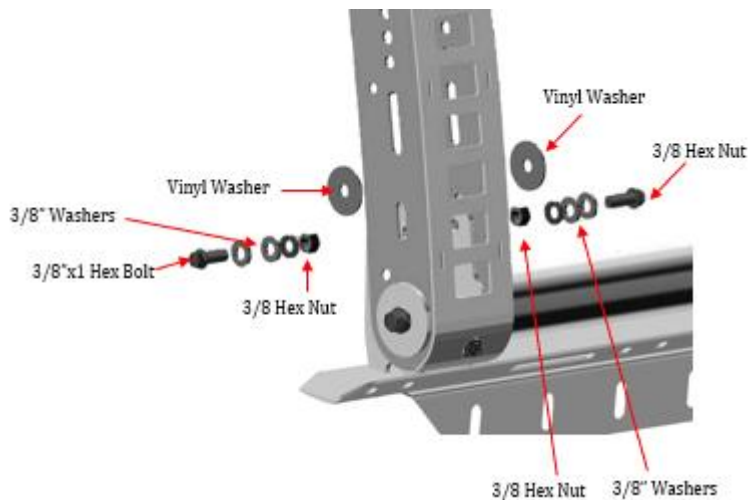
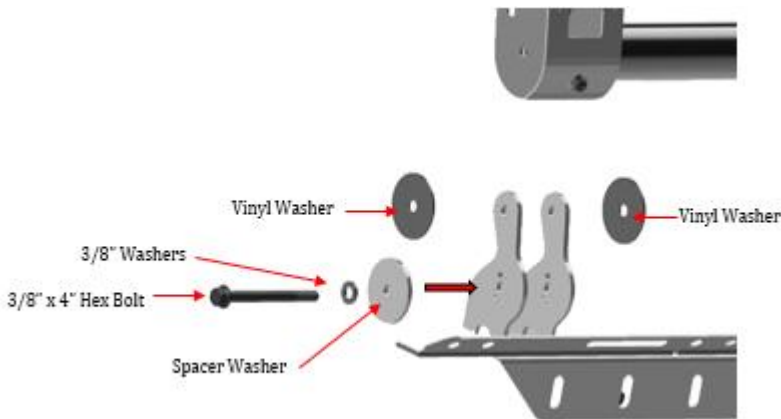
- Insert a 3/8" x 4" hex head bolt through the bottom hole of the upright.
- Assembly order (from bolt head to inside):  
3/8" lock washer, 3/8" flat washer, Spacer Plate.
- Before inserting the bolt completely, place two (2) 2 1/4" vinyl washers between the upright and the connecting surface (one on each side).
- Tip: Use painter's tape to temporarily hold the vinyl washers in place during assembly.

#### 2. Upper Hole Installation:

- Insert a 3/8" x 1" hex head bolt with a 3/8" flat washer through the upper hole of the upright.
- Before the bolt passes through fully, insert two (2) 1 1/2" vinyl washers, one on each side, between the upright and the connecting surface.
- On the opposite side, complete the assembly with:  
3/8" flat washer, 3/8" lock washer, and 3/8" hex nut.

#### 3. Repeat the above steps for each bottom upright corner.

Note: Due to manufacturing tolerances, you may use one (1) vinyl washer in place of a spacer when assembling the upright and logo crossbar.





## INSTALLATION INSTRUCTIONS

### Step 6

#### Accessory Moly Plate Installation.

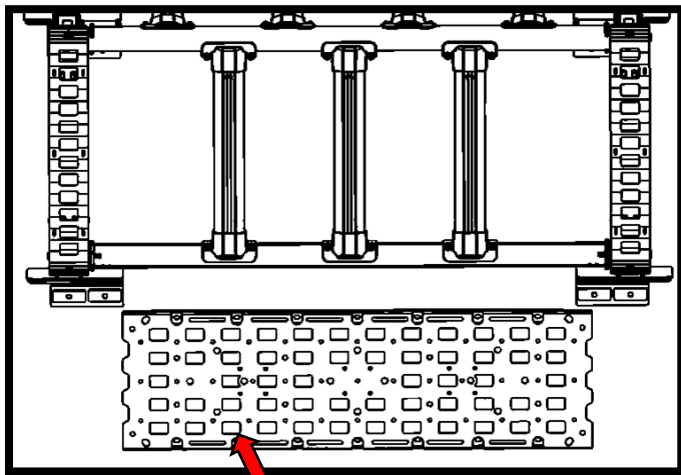
The Accessory Molle Plate is optional and can be installed on either side of the Overland rack, thanks to the symmetrical design of the Xtreme Rack.

Each side's crossbar will require:

- 2 hex bolts
- 2 washers
- 2 hex nuts

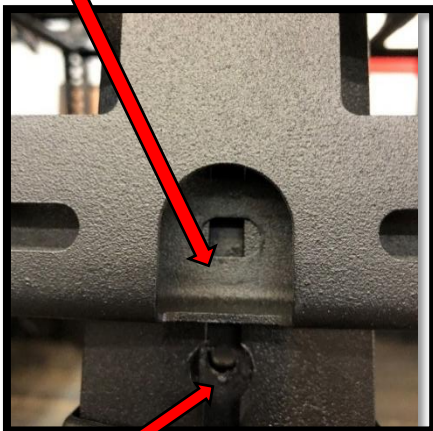
Installation Steps:

1. Insert a hex bolt through the existing hole in the crossbar.
2. Repeat for all six hex bolts (three per side).
3. Align the Molle Plate with the installed bolts.
4. Secure the plate using flat washers and hex nuts.
5. Tighten all fasteners to ensure the plate is firmly attached.



HARDWARE NEEDED	
QTY	ITEM
6	1/4 HEX HEAD BOLT
6	1/4 FLAT WASHER
6	1/4 HEX NUT

**Installation Tip:** Use painter's tape to hold the bolt in place and prevent it from sliding downward during installation.



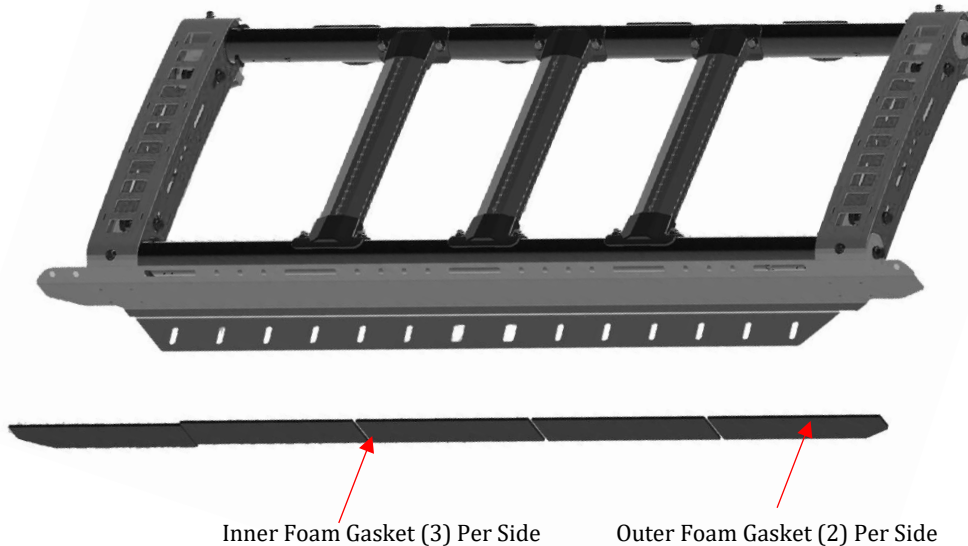
Introduce hex bolt through here.





## INSTALLATION INSTRUCTIONS

### Step 7 Preparing to install

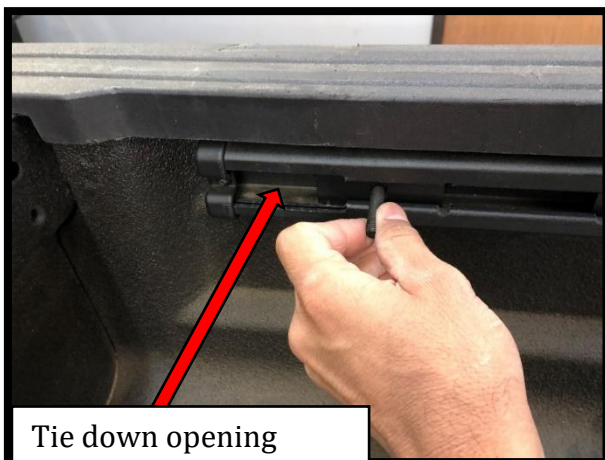


Before mounting the XRS to the truck bed, attach the provided foam gaskets to the underside of each rack foot. Use two outer foam gaskets and three inner foam gaskets per side

### Installation on vehicles equipped with Bed Track System

Before installing the threaded bolt plates onto the Track System, make sure to remove any adjustable tie-down cleats that are already installed.

Please refer to your owner's manual for instructions on how to remove the cleats properly.



With the tie-down cleats removed, install the Bed Track Mounting Plate onto the bed track system using the 5/16" carriage bolt plates. The mounting plate should align with the openings located at the front or rear of the bed. Use six (6) bolt plates and six (6) 5/16" carriage bolts per side.

HARDWARE NEEDED	
QTY	ITEM
12	Bed Track Mounting Plates
12	5/16 x 1 1/2" Carriage Bolts



## INSTALLATION INSTRUCTIONS

### Step 8

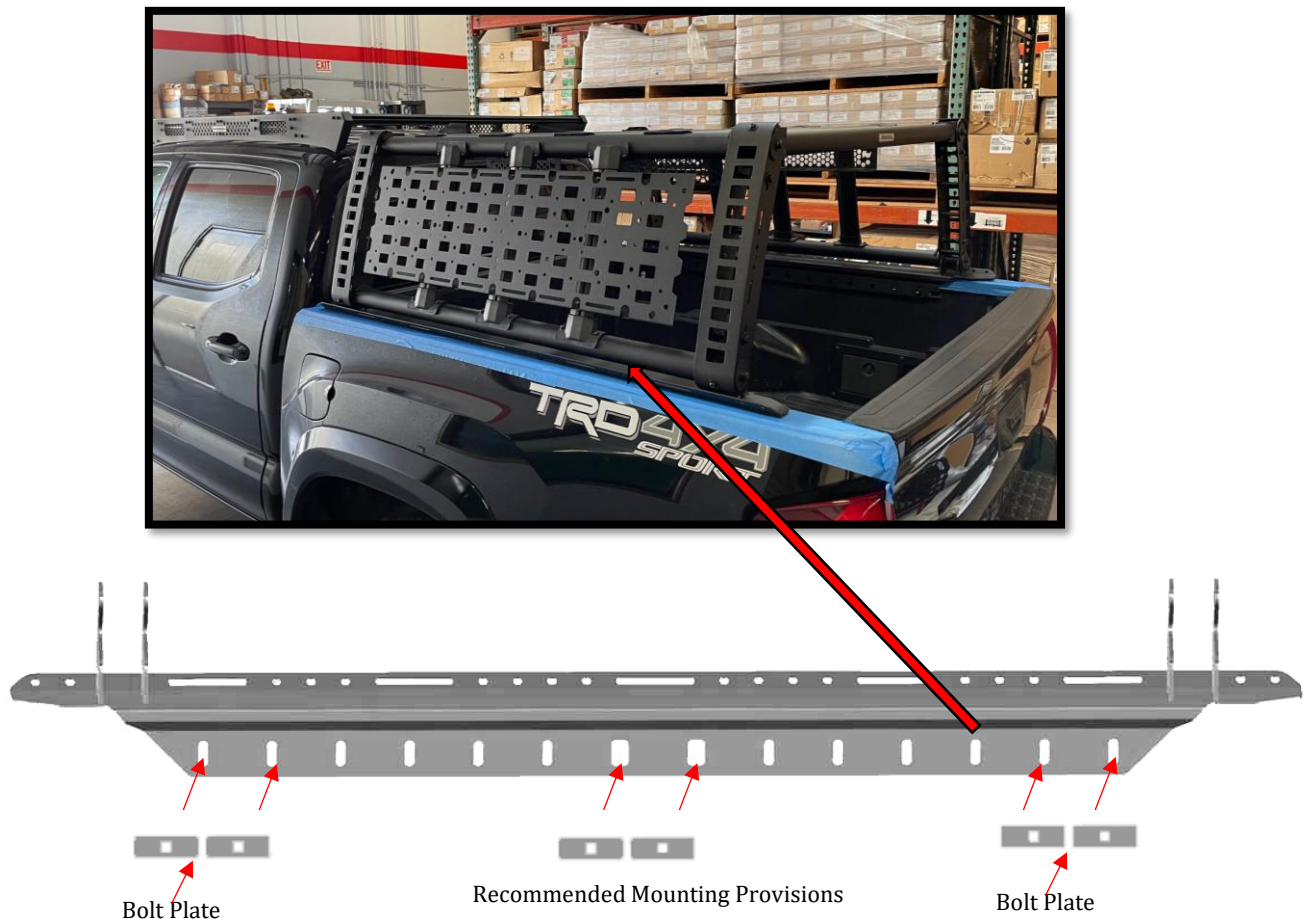
#### Installation on vehicles equipped with Bed Track Systems

With assistance, place the rack system onto the bed rails. Align each rack mount with the bolt plates inside the track system—these should appear as exposed studs. Secure each foot using the following hardware:

- (6) 5/16" Flat Washers
- (6) 5/16" Lock Washers
- (6) 5/16" Hex Nuts

Repeat this process for both sides of the vehicle.

**Note:** If your vehicle has OEM rails and tie-down cleats, they cannot be reinstalled when using the XRS rack.



The XRS rack feet feature multiple mounting holes for flexible installation. For optimal clamping force distribution, it is recommended to mount the plates on the outer sides of the feet as well as the center.



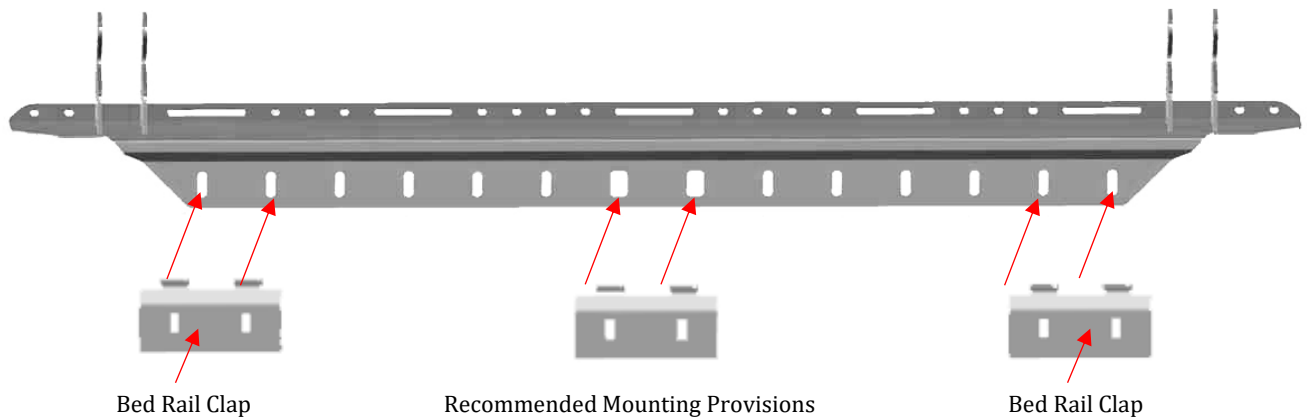


## INSTALLATION INSTRUCTIONS

### Step 9

#### Installation on vehicles equipped without Bed Track System

Using the provided bed rail clamp, insert a 5/16" carriage bolt through the backside so that the clamp's teeth rest underneath the bed rail. Once the bolt threads are exposed on the front side, slide on a 5/16" flat washer, followed by a 5/16" lock washer, and then thread on a 5/16" hex nut. Tighten to secure the clamp in place. Repeat this process for each clamp and bolt.



The XRS rack feet feature multiple mounting holes for flexible installation. For optimal clamping force distribution, it is recommended to install the mounting plates on both the outer sides and the center of the feet.



## INSTALLATION INSTRUCTIONS

### Step 10

After securing the feet to the rail, adjust the rack to ensure it is square with the cab. Once aligned, tighten all remaining loose hardware securely. Periodically inspect all hardware and retighten as necessary to maintain a secure fit.



It is strongly recommended to assemble the rack away from the vehicle first. Once assembled, perform a dry fit before beginning the final installation onto the vehicle.





# INSTALLATION INSTRUCTIONS

## LIMITED WARRANTY

Go Rhino warrants to Buyer that for a period of five (5) years from the date of shipment of the product(s) ("Warranty Period") for black finishes and chrome finishes, that such products will materially conform to the specifications set forth in Go Rhino's specifications in effect as of the date of shipment(s) and will be free from material defects in material workmanship.

Go Rhino warrants to Buyer that for the life of the product(s) from the date of shipment of the product(s) ("Warranty Period") for polished stainless steel finished products purchased after April 2004, that such products will materially conform to the specifications set forth in Go Rhino's specifications in effect as of the date of shipments and will be free from material defects in material workmanship.

Warranty claims must be accompanied with the original invoice and photos of the product. It is the customer's responsibility to clean regularly and protect finish with regular applications of a nonabrasive polish that is compatible with the product's finish.

This warranty covers the cost of the product only and does not include the cost of removal, installation, third party modifications or shipping of the product. In no event shall Go Rhino be liable to buyer or any third party for any damage or harm caused by the product or use thereof, regardless of weather such damages were foreseeable and whether or not Go Rhino has been advised of the possibility of such damages, not withstanding the failure of any agreed or other remedy of its essential purpose. This warranty is void if the product shows signs of alteration, misuse, mishandling, improper care, neglect, improper application and/or damage due to improper installation.

With respect to any such product(s) during the limited warranty period, Go Rhino shall, in its sole discretion, either: (i) provide a one-time repair or replacement of such products (or the defective part) or (ii) credit or refund the price of such products at the pro rata contract rate provided that, if Go Rhino so requests, Buyer shall, at Go Rhino's expense, return such product(s) to Go Rhino. The remedies shall be the Buyer's sole and exclusive remedy and Go Rhino's entire liability for any breach of the limited warrant(ies).

Go Rhino disclaims all other warranties except to the extent that any such warranty cannot be validly disclaimed under applicable law.

### **Finish Limited Warranty:**

Limited lifetime on stainless steel products (after April 2004)

5 year warranty on black powder coat products

5 year warranty on chrome products

This warranty does not cover exposed welds

Finish warranty covers peeling, flaking, or cracking. Washing all finishes regularly with car wash soap and rinsing well with water is the best method for maintaining the finish on your products. You must also protect the finish with nonabrasive automotive wax on a regular basis. The use of any compound which contains abrasives becomes a self-defeating exercise as the compound scratches the finish and opens it to corrosion. The use of harsh chemicals used to remove bugs and tar may also cause the finish to fail and should be avoided.

If you are unsatisfied with your purchase please contact the establishment you purchased the product from.

If you need to place a warranty claim or need assistance, the Go Rhino customer service team will answer any questions you may have. Please contact the Go Rhino customer service team at 1-888-427-4466 during normal business hours Monday thru Friday 7 am to 5 pm PST. You may also email [warranty@gorhino.com](mailto:warranty@gorhino.com). In order to better serve you please provide a copy of the original invoice / receipt, a photo of the issue you are experiencing and a photo of the vehicle the product is installed on.

All warranty returns must have an approved RGA number. The RGA number must be clearly marked on the exterior of the return package. All approved warranty returns must be shipped to Go Rhino Products, 1002 Carriers Drive, Laredo, Texas 78045.

## PRODUCT REGISTRATION

Please remember to register your new purchase. You may register your product at [www.gorhino.com](http://www.gorhino.com). Registering your product may help speed any future warranty or customer service inquiries.

**Thank you again for purchasing from Go Rhino Products**

Please take a few minutes to view additional products for your vehicle and more at [GORHINO.com](http://GORHINO.com)  
These installation instructions are available on the Go Rhino web site along with installation videos for many of our products.

[www.gorhino.com](http://www.gorhino.com)

[www.bigcountryauto.com](http://www.bigcountryauto.com)

[www.gorhinopd.com](http://www.gorhinopd.com)