



SKEERDY CAT

CATALYTIC CONVERTER ANTI-THEFT DEVICE & SKID PLATE

(2005-2023 TACOMA)
(2003-2024 4RUNNER)

INSTALLATION INSTRUCTIONS

CONTENTS

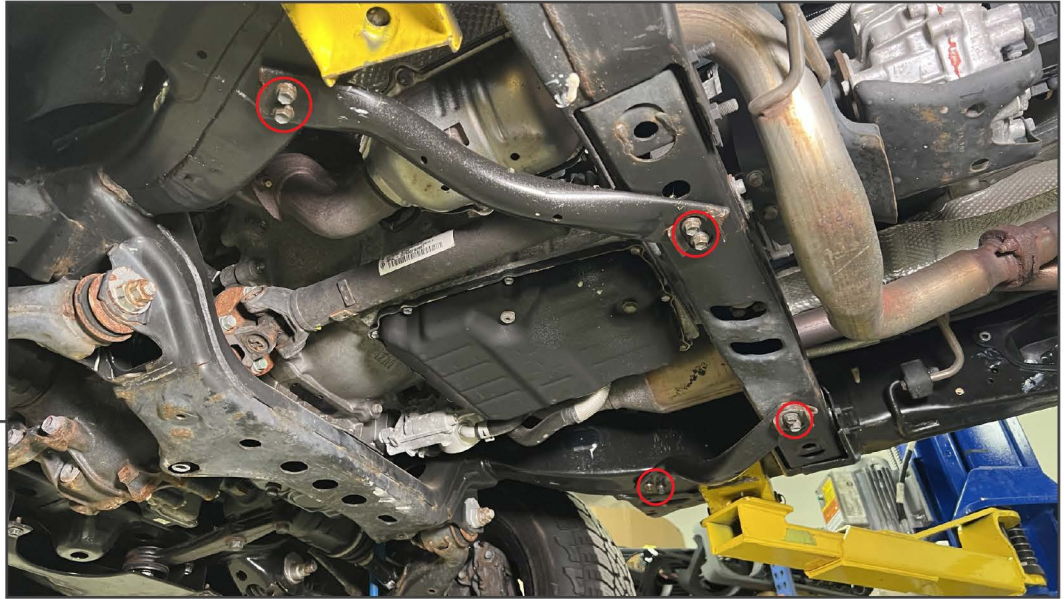
- (1) Skid Plate
- (2) M10x1.50 x 40mm Security Torx Bolts
- (2) M10 Lock Washers
- (2) M10 Flat Washers
- (2) M10 Nut Plates
- (4) M8x1.25 x 35mm Security Torx Bolts
- (4) M8 Lock Washers
- (4) M8 Flat Washers
- (2) M8x1.25 x 40mm Flange Head Bolts
- (2) 25mm Spacers
- (1) T-45 Security Torx Bit
- (1) T-40 Security Torx Bit

TOOLS REQUIRED

- T-40 & T45 Security Torx Bits
(Provided)
- 12mm Socket
- Ratchet
- Floor Jack
- Jack Stands

SKU # TT26681

STEP 1

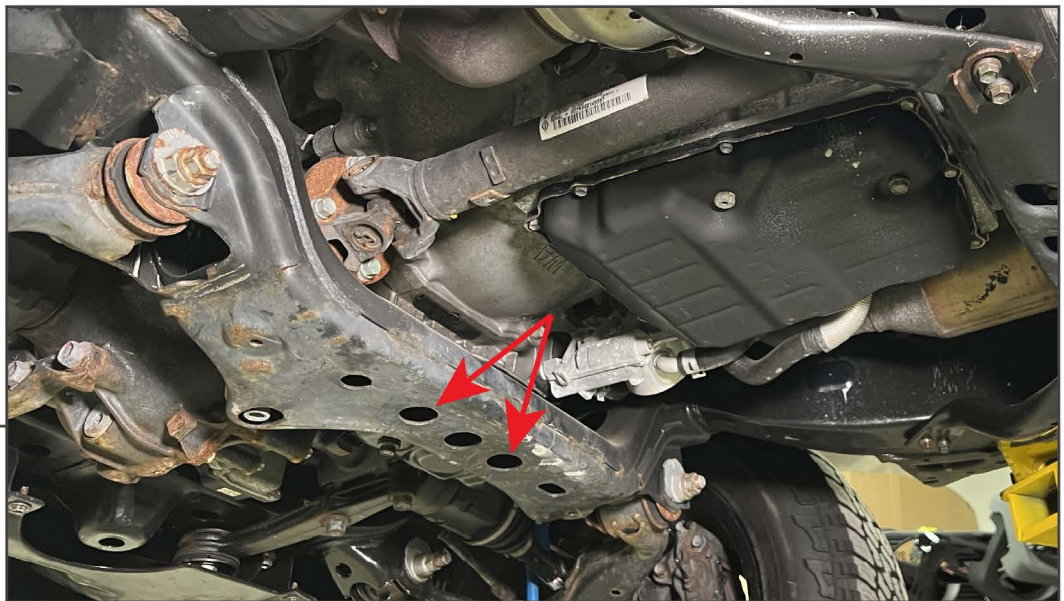


Safely lift and support the front of the vehicle.

Remove the OEM catalytic converter guard bars by removing (4) 12mm bolts per side.

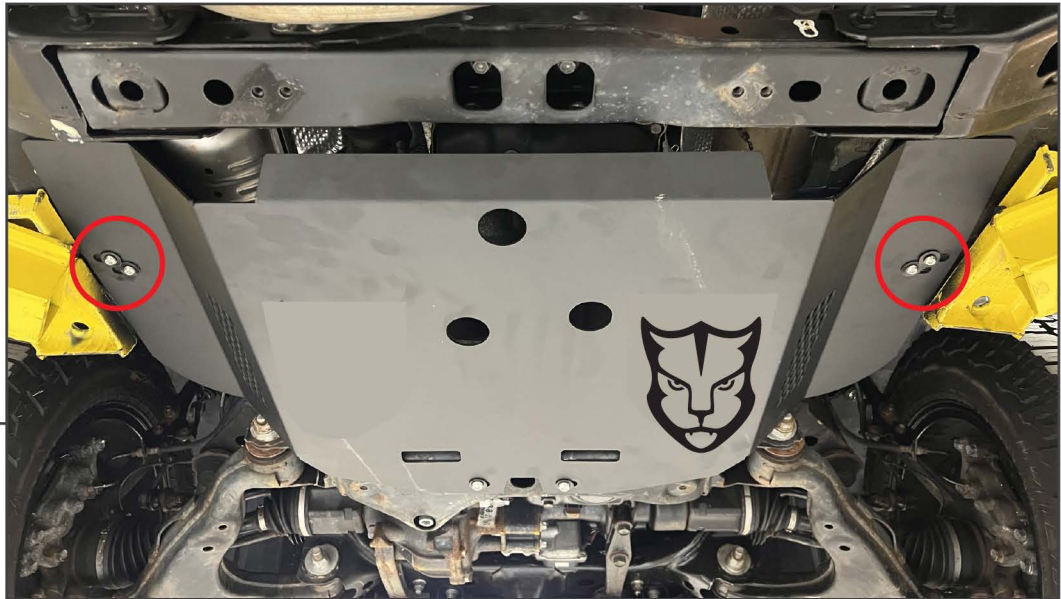
Note: If the vehicle is equipped with the OEM front skid plate, remove the (4) 12mm bolts to lower the skid plate from the vehicle.

STEP 2



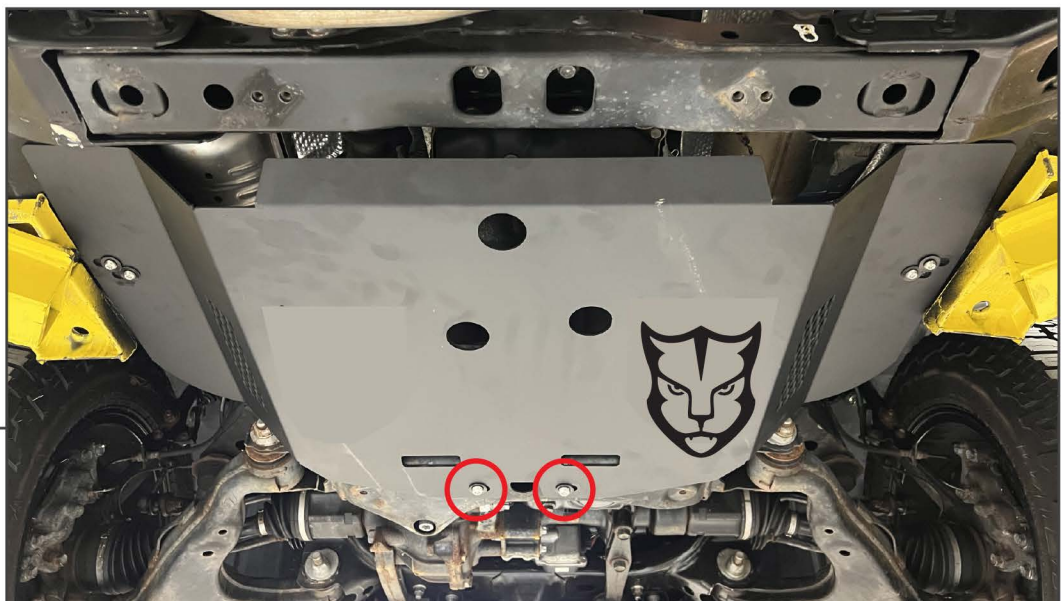
Locate the holes in the frame under the front of the transmission. Place (1) M10 nut plate into each frame hole shown above.

STEP 3

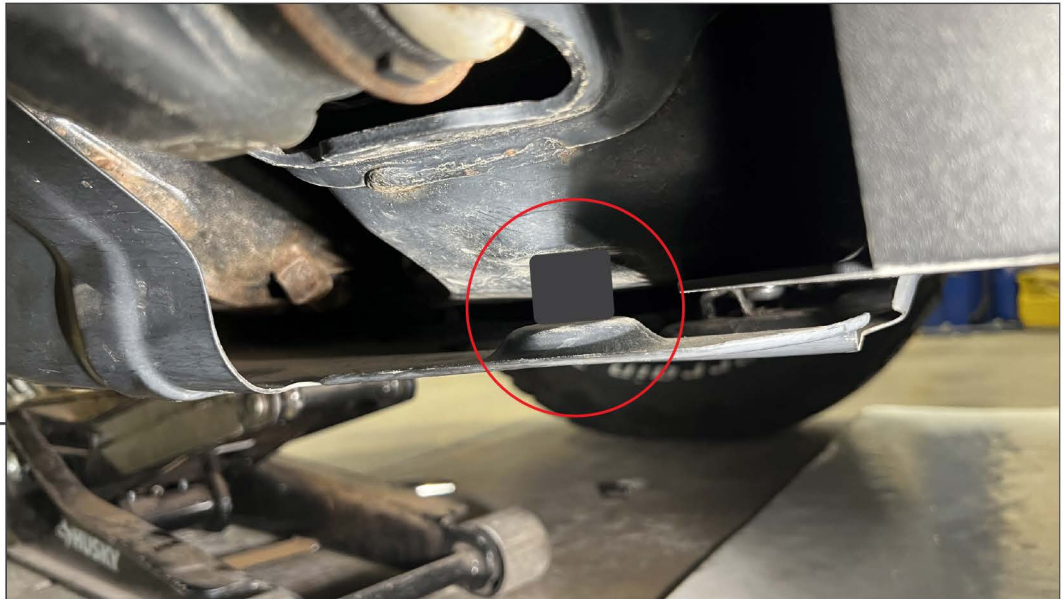


With assistance, lift the skid plate to the vehicle frame. Loosely secure the skid plate to the LH and RH frame rails using (4) M8 x 35mm Torx bolts, (4) M8 lock washers, and (4) M8 flat washers. The hardware will thread into the vehicle threaded holes.

STEP 4



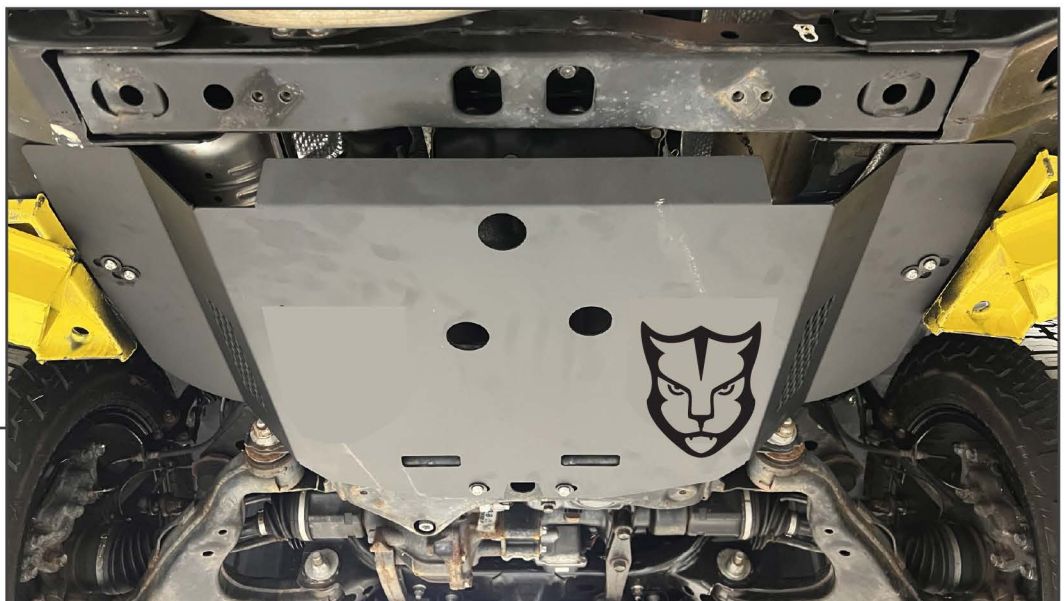
Loosely secure the front of the skid plate to the vehicle frame under the transmission using (2) M10 x 40mm Torx bolts into the previously placed nut plates.



STEP 5

If desired, fit the OEM skid plate into the slots in the front of the new skid plate. Once fitted, hinge the OEM skid plate upwards to install the original (2) 12mm bolts into the vehicle.

Fit (2) 25mm spacers between the original skid plate and the vehicle frame. Then, secure the skid plates together using the included (2) M8 x 40mm flange bolts.



STEP 6

Adjust the skid plate as necessary for a symmetrical fit to the vehicle frame.

Secure the skid plate by tightening all hardware evenly until secure.

Installation is now complete.