

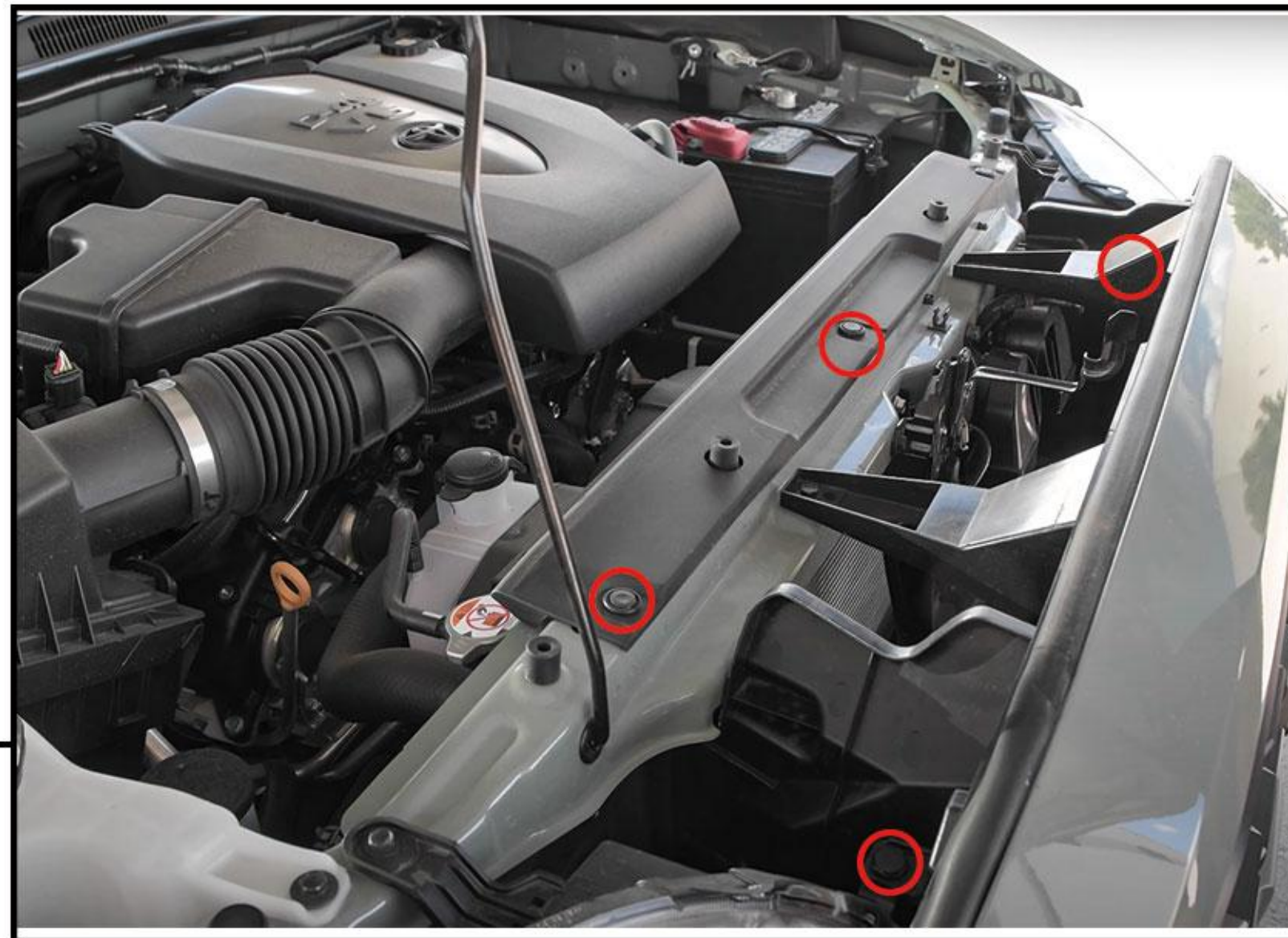
FRONT GRILLE

SKU # AMTYTAA00103

Product Installation Instructions

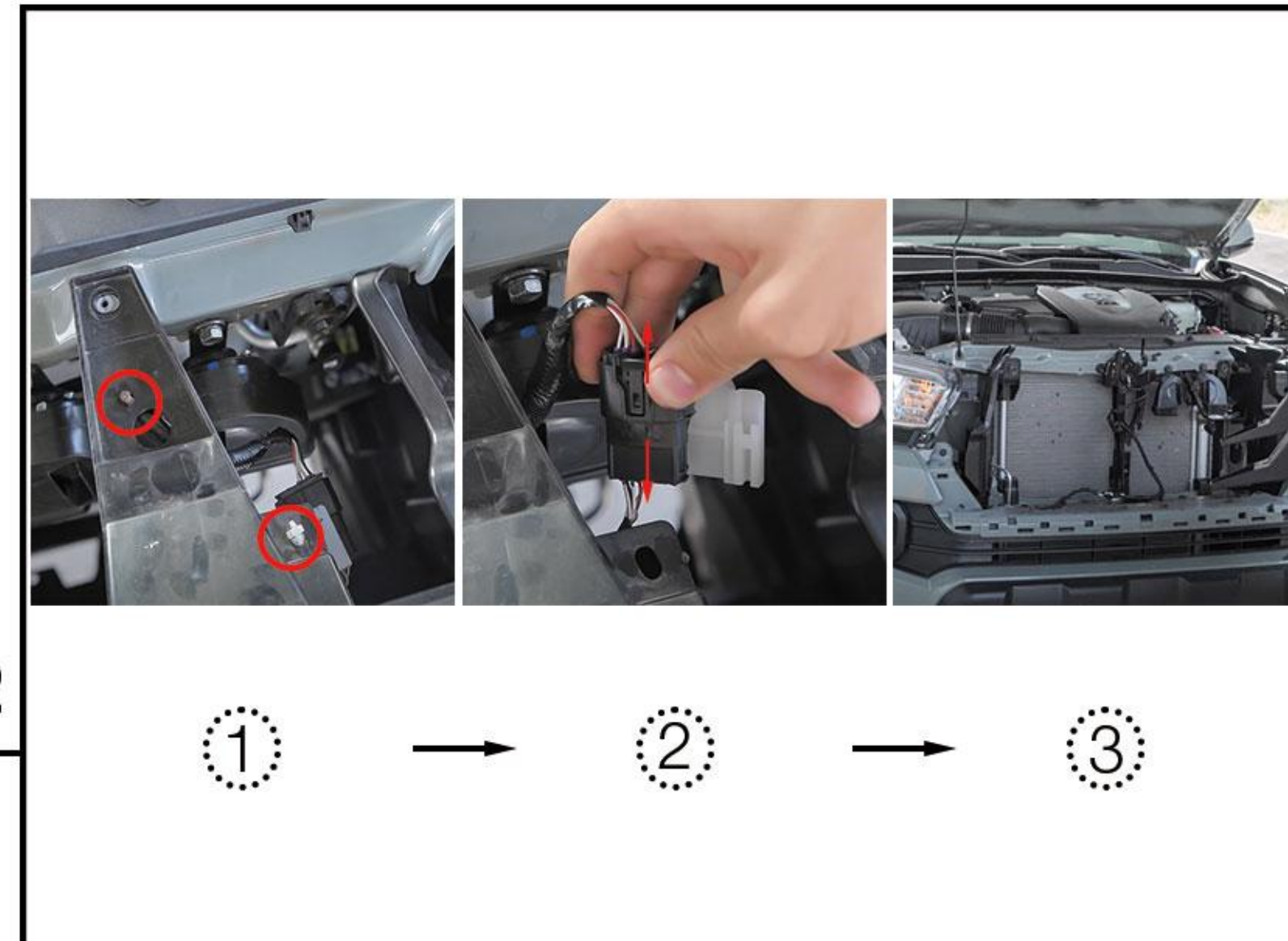
Fitment : 2016-2021 Toyota Tacoma.

STEP 1



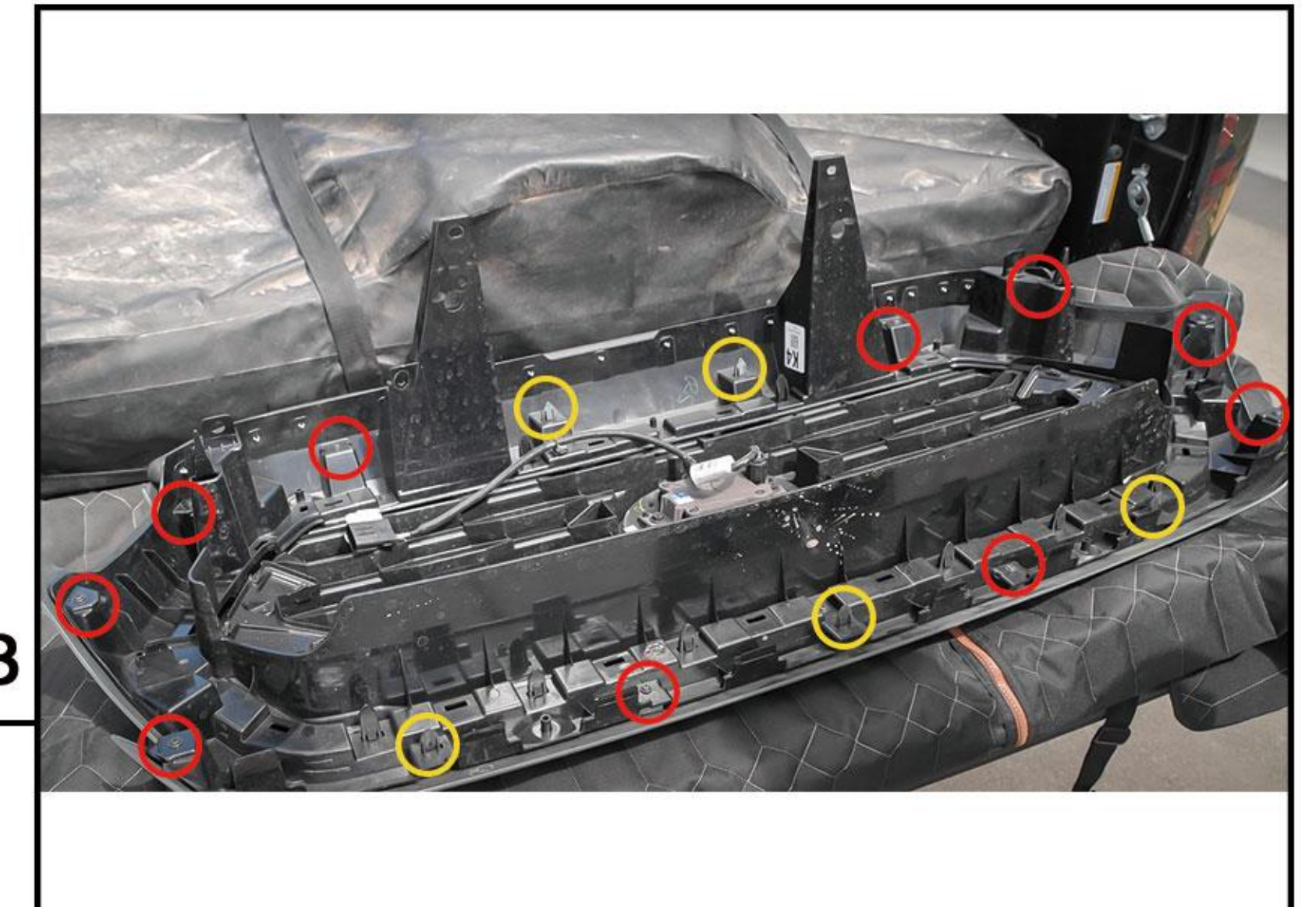
Use tools to remove two bolts and two clips.

STEP 2



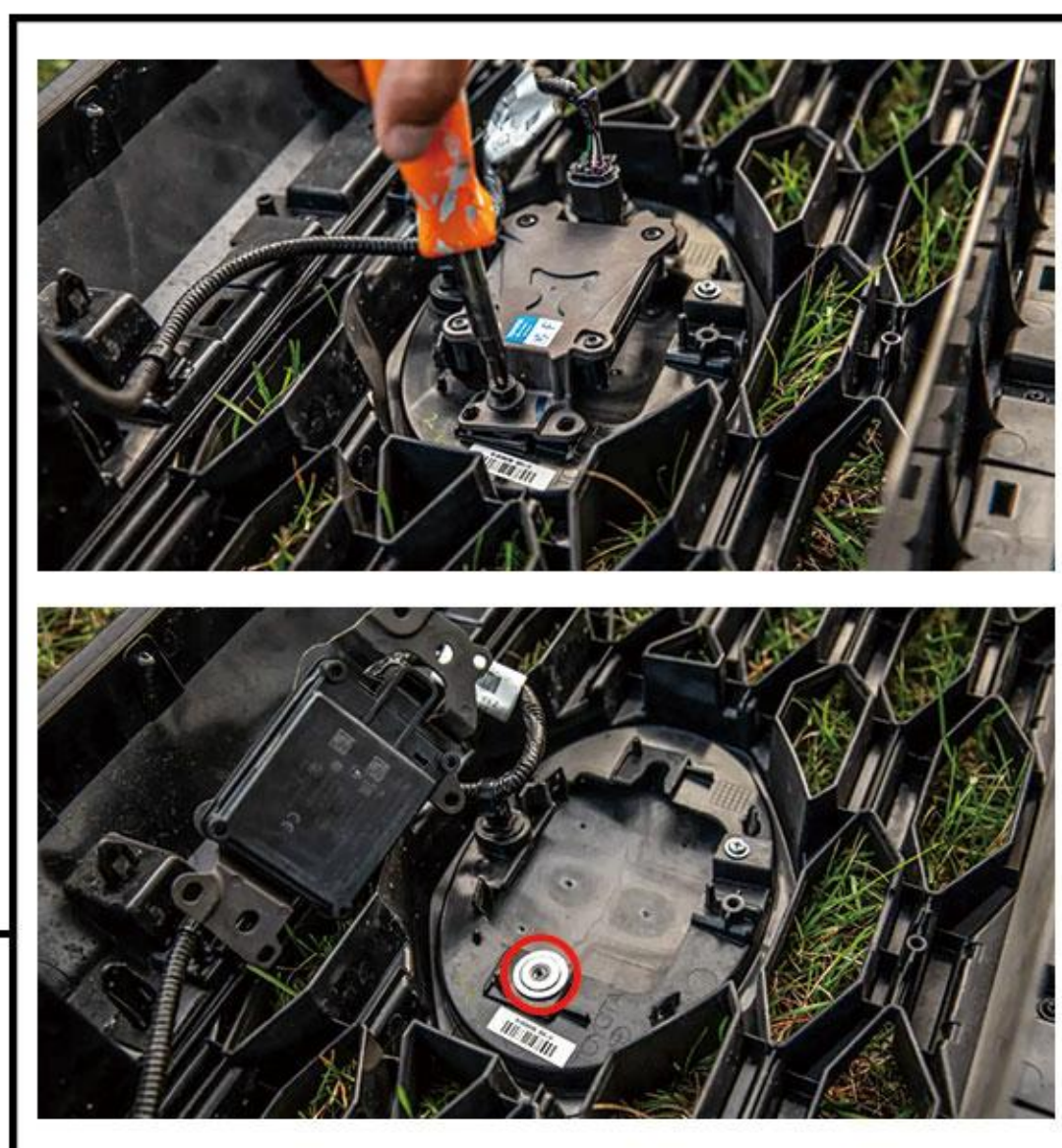
Press the two clips down and push them out, then unplug the TSS connectors. Pull the original grille assembly from the vehicle.

STEP 3



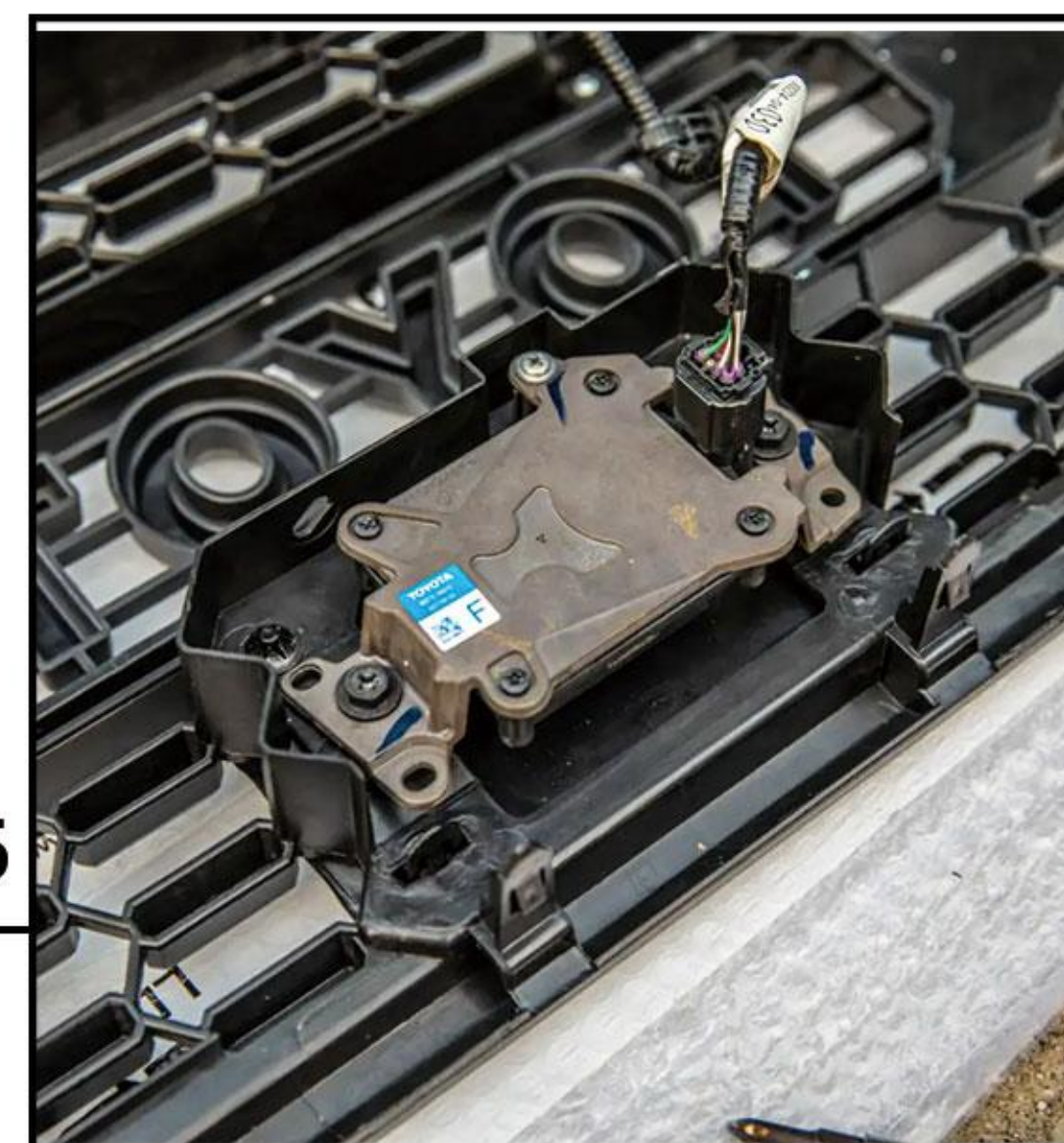
Remove all screws and clips around the original grille and take out the original grille. You'll be left with only the grille surround, this is where you'll clip in the new grille. Simply do the removal steps in reverse to reinstall the new grill.

STEP 4



Remove Tss sensor. If you don't have a TSS sensor, you can skip this step. The bolts that were unscrewed with the screwdriver sit in a circular nut you see above. These nuts, along with the screws, need to be reused in your new grille.

STEP 5



Transolant TSS Sensor into new grille. Install the circular nuts you removed in the last step. There is an identical channel in the garnish you prepped earlier. Place the TSS in the orientation seen above, and tighten down the 2 bolts that attach it to the grille.

STEP 6



Amer lights wiring: First connect each amber light to the wiring harness, then connect the red wire to the ACC, and the black wire to the negative of battery.

STEP 7



Fix all the bolts and clips and finish installation of new grille.