

## 18-23 FORD BRONCO TERRA SERIES SIDE STEPS ATTFB01C102-BX



### CAUTION BEFORE INSTALLING

**Before installation** - Read and understand all instructions, warnings, cautions, and notes contained in this installation instruction guide. Consult your vehicle owner's manual for proper disconnection of electrical and lifting of vehicle if required for installation of this product.

This install may require some technical skills and knowledge of basic mechanical work. If you do not feel that you are capable of performing this install please take this product to a trained professional.

After reading this guide please contact us with any questions or concerns before installing product.  
Customer Service: (626) 369-2121

**ATTICA4X4 is not responsible for any bodily injury or harm to you or your vehicle as a result of an improper install.**

Proper installation of this kit requires knowledge of the factory recommended procedures for removal and installation of original equipment components. We recommend that the factory shop manual and any special tools needed to service your vehicle be on hand during the installation. Installation of this kit without proper knowledge of the factory recommended procedures may affect the performance of these components and the safety of the vehicle.

- **Always wear eye protection when operating power tools.** •

*Inspect all contents of this package to make sure product is not damaged and all installation hardware has been included. If parts are missing from kit, please be prepared to provide the following information:*

- |                             |                         |
|-----------------------------|-------------------------|
| • Name of purchase location | • Date above Bar Code   |
| • Bar Code on side of box   | • Date inside box cover |

# INSTALLATION **MANUAL**

## TOOLS REQUIRED

- 16MM SOCKET
- 18MM SOCKET



## HARDWARE KIT



**X 2**

THREADED PLATE



**X 17**

W27 | WASHER



**X 12**

W23 | WASHER



**X 4**

N15 | HEX FLANGE NUT



**X 7**

N19 | HEX FLANGE NUT



**X 8**

W22 | WASHER



**X 12**

W25 | WASHER



**X 8**

B58



**X 8**

B35 | BOLT



**X 5**

B37 | BOLT



**X 1**

SPARE PARTS HARDWARE KIT



# INSTALLATION MANUAL

Begin by unpacking all items and inspecting them for damage or missing items. Any concerns, please contact the company you purchased the side steps from.



## CAUTION BEFORE INSTALLING



To prevent damaging your gas tank, use the supplied **W25** lock washer with the thicker washer for the passenger's side middle mounting point.

# INSTALLATION MANUAL



For the driver's side front mounting point, use **B58** bolt and **W27** washer as shown to the top left. Use the oversized washer with **W25** lock washer and **N19** nut as shown to the top right.

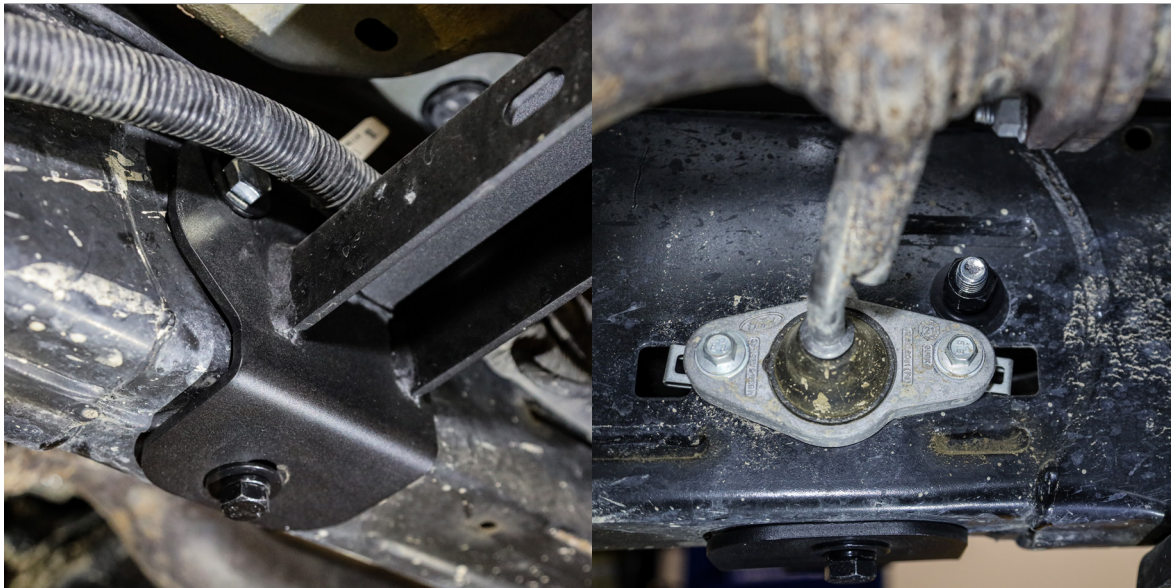
For the bottom bolt, use **B37** bolt, **W25** lock washer and **W27** washer with the threaded plate (Feed the threaded plate into the frame).



Attach the supporting bracket to the driver's side front mounting point, using **B35** bolt, **W22** lock washer and **W23** washer, with the **N15** nut.



# INSTALLATION MANUAL



For the driver's side middle mounting point, use **B58** bolt and **W27** washer as shown to the top left. Use the **W27** washer with **W25** lock washer and **N19** nut as shown to the top right. (Do not use the oversized washer for this mounting point.)

# INSTALLATION MANUAL



For the driver's side rear mounting point, use **B58** bolt and **W27** washer as shown to the top left. Use the oversized washer with **W25** lock washer and **N19** nut as shown to the top right.



Attach the supporting bracket to the driver's side rear mounting point, using **B35** bolt, **W22** lock washer and **W23** washer, with the **N15** nut.



# INSTALLATION MANUAL



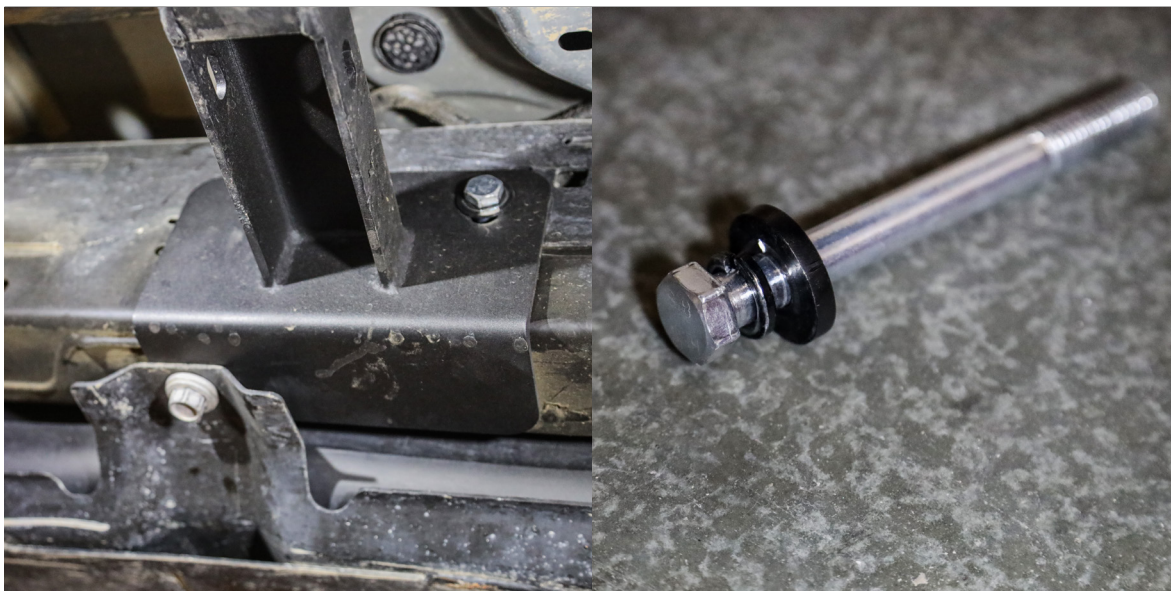
For the passengers side front mounting point, use **B58** bolt and **W27** washer as shown to the top left. Use the oversized washer with **W25** lock washer and **N19** nut as shown to the top right.

For the bottom bolt, use **B37** bolt, **W25** lock washer and **W27** washer with the threaded plate (Feed the threaded plate into the frame).



Attach the supporting bracket to the passenger's side front mounting point, using **B35** bolt, **W22** lock washer and **W23** washer, with the **N15** nut.

# INSTALLATION MANUAL



For the passenger's side middle mounting point, use **B58** bolt and the thick washer with **W25** lock washer as shown to the top right. Use the oversized washer with **W25** lock washer and **N19** nut to mount to the frame.

Take note of the distance between the bolt and gas tank, if more clearance is needed, **W27** washer can be added.





# INSTALLATION MANUAL



For the passengers side rear mounting point, use **B58** bolt and **W27** washer as shown to the top left. Use the oversized washer with **W25** lock washer and **N19** nut as shown to the top right.



Attach the supporting bracket to the passenger's side rear mounting point, using **B35** bolt, **W22** lock washer and **W23** washer, with the **N15** nut.

Once finished your Attica Terra Series Side Steps will be completely installed and ready to take to the outdoors!



IF YOU HAVE ANY QUESTIONS, PLEASE EMAIL US AT [TECH@ATTICA4X4.COM](mailto:TECH@ATTICA4X4.COM) OR CALL US AT  
626-369-2121