



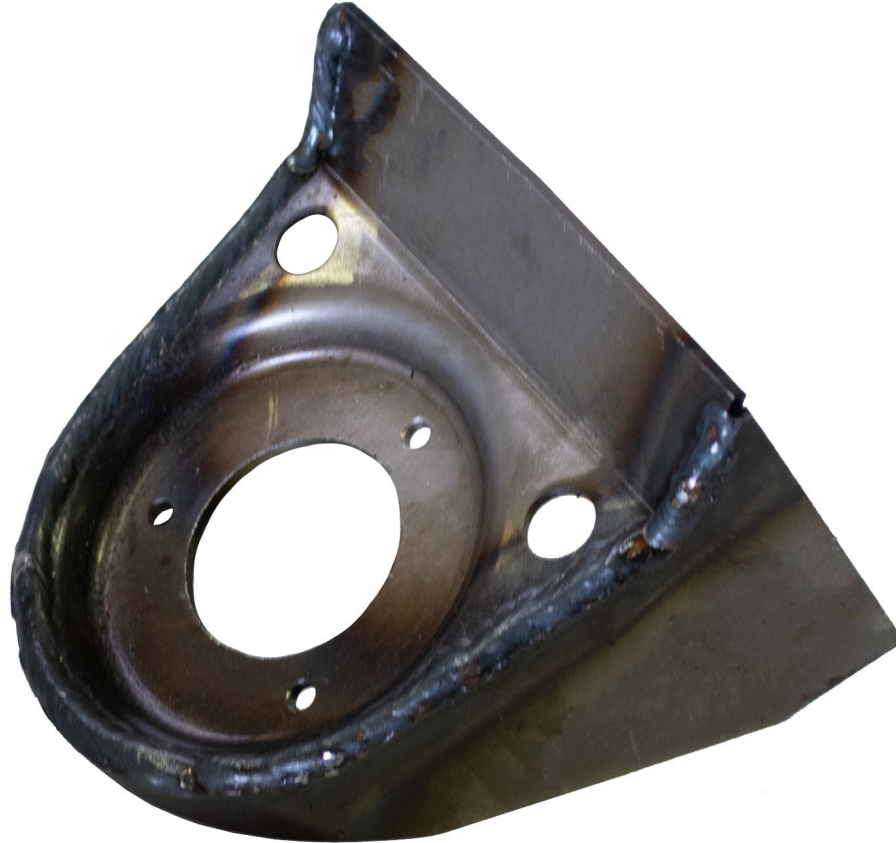
# **RUST BUSTER**

**RB8430**

**2003-2009 Toyota® 4Runner & Lexus GX470**

**2007-2014 Toyota® FJ Cruiser**

**Middle Body Mount**



**VIDEO AVAILABLE**

#### **REQUIRED TOOLS**

Jack Stands or Lift  
Mig Welder  
Paint/Primer  
Hand Grinder  
Cutting Wheel or Torch  
Welding Gloves  
Welding Hood/Shield  
Ear & Eye Protection  
Sockets & Ratchet  
Fire Extinguisher  
Tape Measure  
Paint Marker

#### **KIT CONTAINS**

Middle Body Mount

#### **QTY**

1



# RUST BUSTER

**RB8430**

**2003-2009 Toyota® 4Runner & Lexus GX470**

**2007-2014 Toyota® FJ Cruiser**

**Middle Body Mount**

## **1) PREPARING YOUR VEHICLE**

Begin by disconnecting your battery prior to starting your installation.

Inspect your vehicle for leaking fuel lines, fuel tank and engine components. If you have fuel leaks repair all leaks prior to starting your installation. If your fuel tank is near your welding area **remove your tank prior to welding.**

Remove all combustible items above the work area such as seats, carpets, padding, etc.

**Keep all flammable materials away from the vehicle work area.**

## **2) PREPARING YOUR WORKSTATION**

Keep a fire extinguisher close by in the case of fire and make sure you always have a designated "Fire Watch" to assist during the cutting or welding phases.

Abide by all apprenticed welding safety standards and practices.

Always use appropriate welding eye protection, ear protection, and work and fire safety gloves during the installation and within the work area.



**WARNING!**

If you are unsure on how to perform the installation or how to operate any of the required tools listed above, it is **HIGHLY** advised that you enlist the work of a certified welder/installer.

Failure to follow proper safety precautions and instructions may result in serious injury. **The user assumes all liability when installing the product.**



# RUST BUSTER

**RB8430**

**2003-2009 Toyota® 4Runner & Lexus GX470**

**2007-2014 Toyota® FJ Cruiser**

**Middle Body Mount**

**3) PREPARING FOR YOUR INSTALL**

Remove the body mount bolt and bushing.

**CUT**

Cut off the factory body mount.

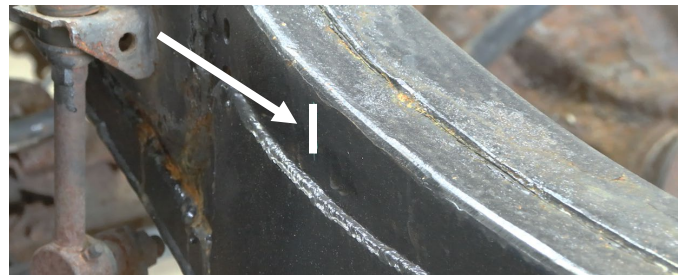


Grind down the frame free of rust and debris, revealing bare metal.



**4) MEASURE**

On the opposite side of your vehicle, use a tape measure to measure the distance from the hole to the outer rim on the factory body mount bracket (5 3/8 inch).



Then, measure the distance between the body mount and top of the rail (2 in).







# RUST BUSTER

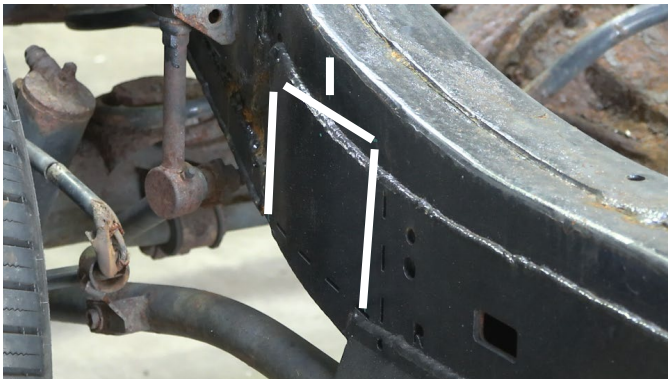
## RB8430

2003-2009 Toyota® 4Runner & Lexus GX470

2007-2014 Toyota® FJ Cruiser

Middle Body Mount

Mark off your measurements on the side you'll be working on. Once you've confirmed your measurements, mark off the perimeter of the part before welding the part into the frame.



### 5) **WELD**

Remove any potential fire hazards from the work area. Following proper welding procedures, tack weld the part to the frame. Then, weld the part on fully. Weld 100% around all edges



### 6) **PAINT AND PROTECT**

Coat the part and work area with a primer or other rust inhibitor to help prevent or reduce the risk of rust formation.





**RUST  
BUSTER**

**RB8430**

**2003-2009 Toyota® 4Runner & Lexus GX470**

**2007-2014 Toyota® FJ Cruiser**

**Middle Body Mount**



**7) REINSTALL**

Reinstall the bolt, and bushing.