



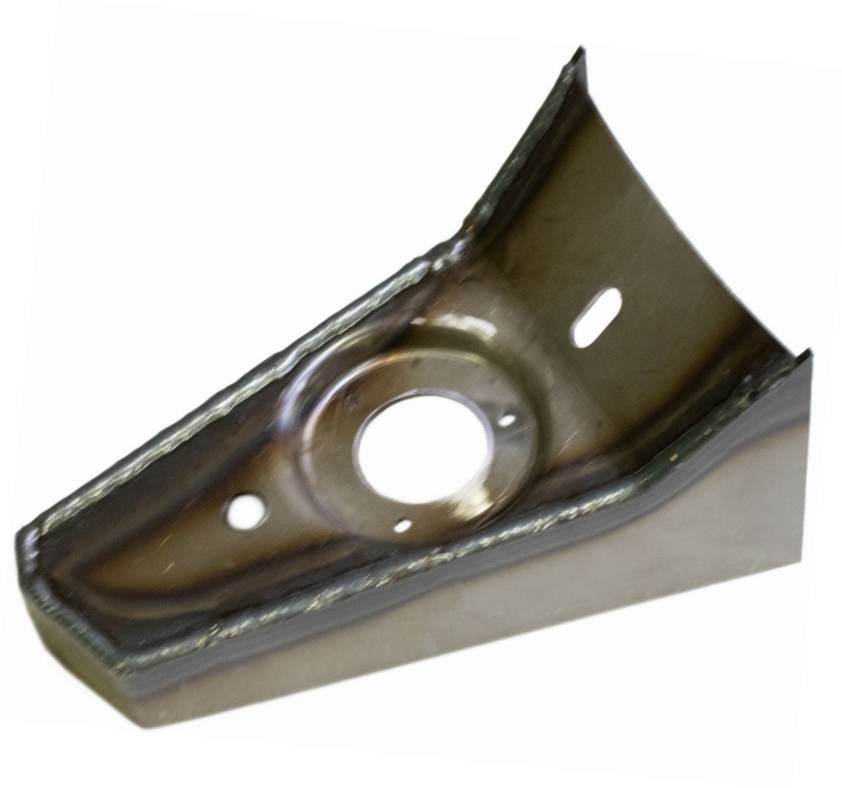
**RUST  
BUSTER**  
F R A M E W O R K S

## RB8429L & RB8429R

2003-2009 Toyota® 4Runner/ Lexus GX470

2007-2014 Toyota FJ Cruiser

**Front Body Mount**



**VIDEO AVAILABLE**

### **REQUIRED TOOLS**

Jack Stands or Lift  
Mig Welder  
Paint/Primer  
Hand Grinder  
Cutting Wheel or Torch  
Welding Gloves  
Welding Hood/Shield  
Ear & Eye Protection  
Sockets & Ratchet  
Fire Extinguisher  
Tape Measure

### **KIT CONTAINS**

Front Body Mount

### **QTY**

1



**RUST  
BUSTER**  
F R A M E W O R K S

## RB8429L & RB8429R

2003-2009 Toyota® 4Runner/ Lexus GX470

2007-2014 Toyota FJ Cruiser

**Front Body Mount**

### 1) **PREPARING YOUR VEHICLE**

Begin by disconnecting your battery prior to starting your installation.

Inspect your vehicle for leaking fuel lines, fuel tank and engine components. If you have fuel leaks repair all leaks prior to starting your installation. If your fuel tank is near your welding area **remove your tank prior to welding.**

Remove all combustible items above the work area such as seats, carpets, padding, etc.

**Keep all flammable materials away from the vehicle work area.**

### 2) **PREPARING YOUR WORKSTATION**

Keep a fire extinguisher close by in the case of fire and make sure you always have a designated "Fire Watch" to assist during the cutting or welding phases.

Abide by all apprenticed welding safety standards and practices.

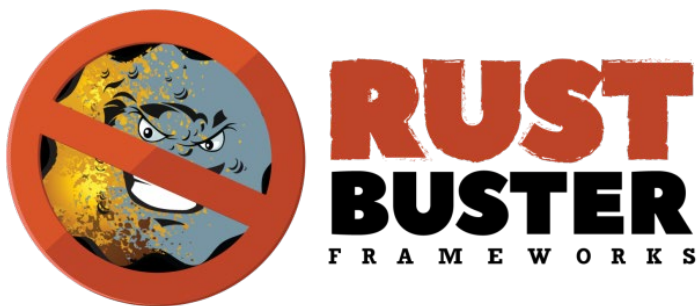
Always use appropriate welding eye protection, ear protection, and work and fire safety gloves during the installation and within the work area.



**WARNING!**

If you are unsure on how to perform the installation or how to operate any of the required tools listed above, it is **HIGHLY** advised that you enlist the work of a certified welder/installer.

Failure to follow proper safety precautions and instructions may result in serious injury. **The user assumes all liability when installing the product.**



## RB8429L & RB8429R

2003-2009 Toyota® 4Runner/ Lexus GX470

2007-2014 Toyota FJ Cruiser

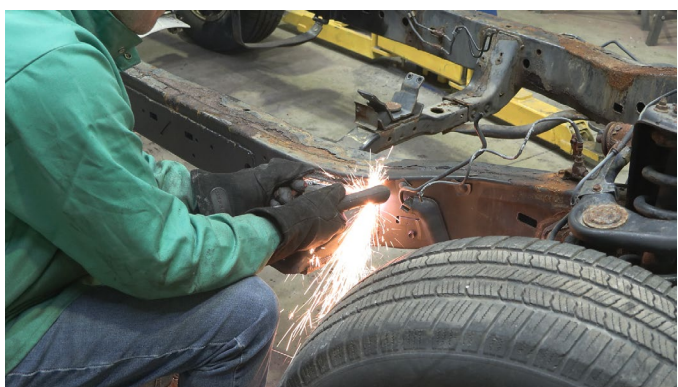
### Front Body Mount

#### 3) PREPARING FOR YOUR INSTALL

Unbolt the front body mount and jack up the front Corner of the cab to relieve the weight.

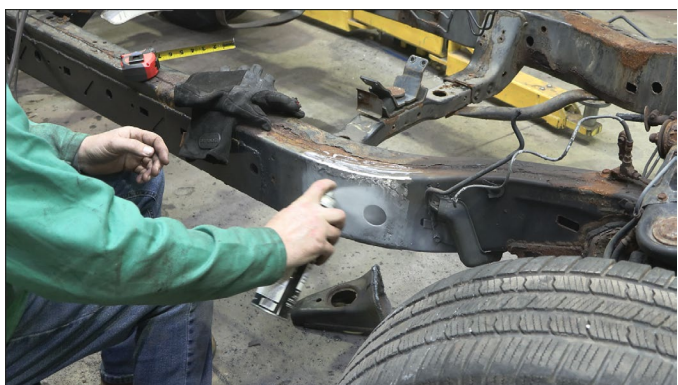
#### 4) CUT

Cut off the old front body mounts.



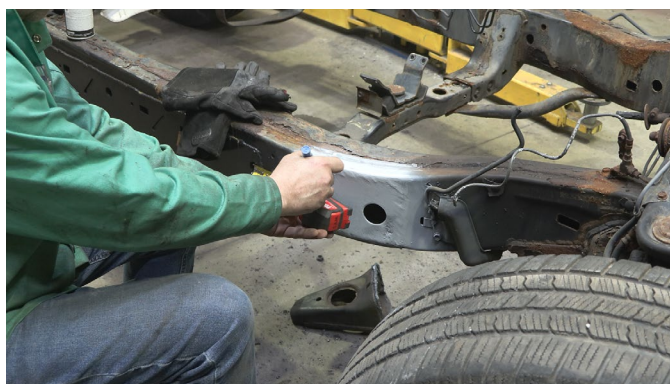
Clean the frame free of rust and debris, revealing bare metal.

(OPTIONAL) Paint the part and work area with a weldable primer to help prevent against rust.

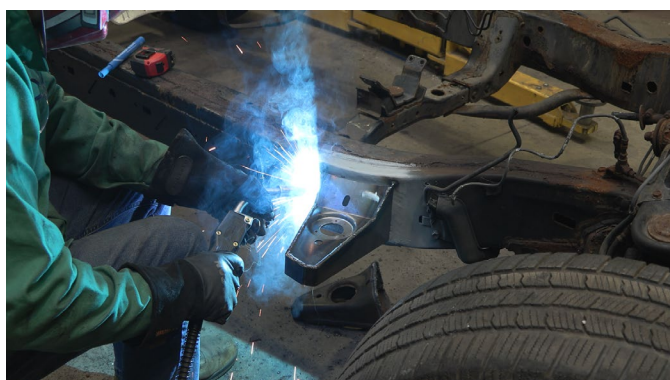


#### 5) WELD

Remove any potential fire hazards from the work area. Measure the opposite side of the frame to reinstall the front body mount. Line up the bolt and bushing with your body before welding it on.



Tack weld the part on fully before fully welding it onto the frame. Following proper welding procedures, begin welding the part. 100% weld around all edges.





**RUST  
BUSTER**  
F R A M E W O R K S

## **RB8429L & RB8429R**

2003-2009 Toyota® 4Runner/ Lexus GX470  
2007-2014 Toyota FJ Cruiser  
**Front Body Mount**

### **6) PAINT AND PROTECT**

If you chose not to protect your part in (Step 4), coat the part and work area with a primer or other rust inhibitor to help prevent or reduce the risk of rust formation.



### **7) REINSTALL**

Reinstall the body mount and lower the cab onto the bushing.