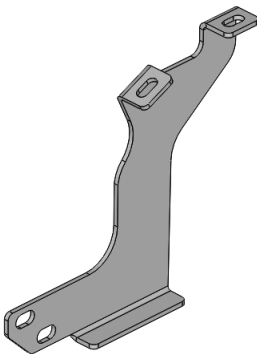
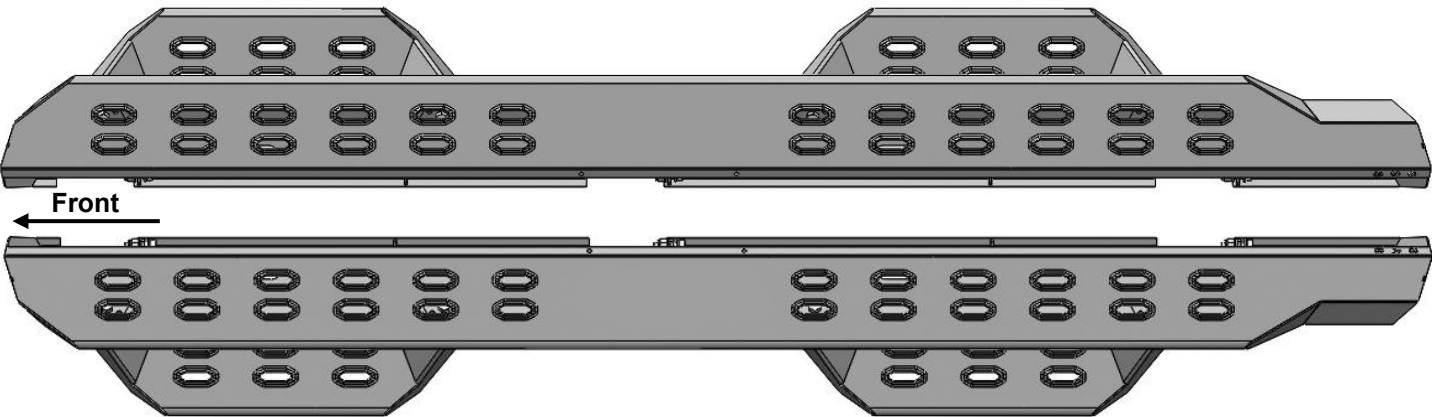




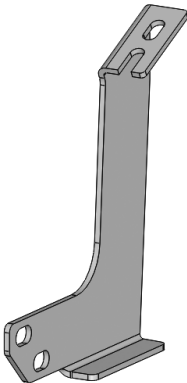
INSTALLATION INSTRUCTIONS

PARTS LIST:

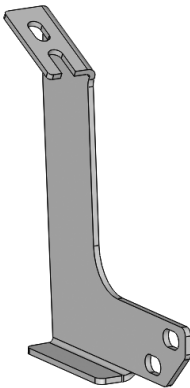
Qty	Item Description	Qty	Item Description
1	Driver/Left Main Tube	12	10mm Nylon Lock Nuts
1	Passenger/Right Main Tube	24	10mm x 20mm x 2mm Flat Washers
4	Drop Steps	12	10-1.50mm x 30mm Hex Bolts
1	Driver/Left Front Mounting Bracket	12	8-1.25mm x 30mm Hex Bolts
1	Passenger/Right Front Mounting Bracket	12	8mm x 24mm x 2mm Flat Washers
2	Driver/Left Center/Rear Mounting Brackets	12	8mm Lock Washers
2	Passenger/Right Center/Rear Mounting Brackets	16	8mm x 22mm x 2mm Flat Washers
8	8mm Triangle Double Bolt Plates	16	8mm Nylon Lock Nuts



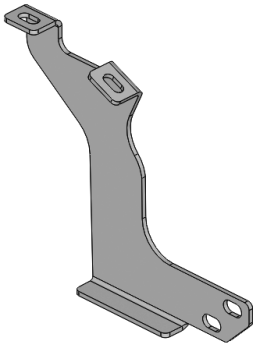
Driver/Left Front Bracket



Driver/Left Rear & Center Bracket



Passenger/Right Rear & Center Bracket



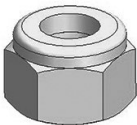
Passenger/Right Front Bracket



Lock Washer



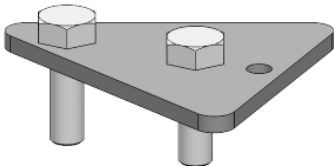
Flat Washer



Nylon Lock Nut





Hex Bolt

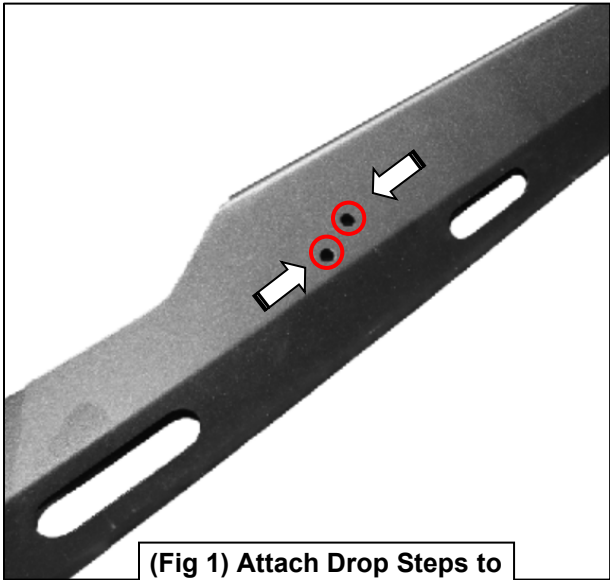


Triangle Double Bolt Plate

TOOLS REQUIRED

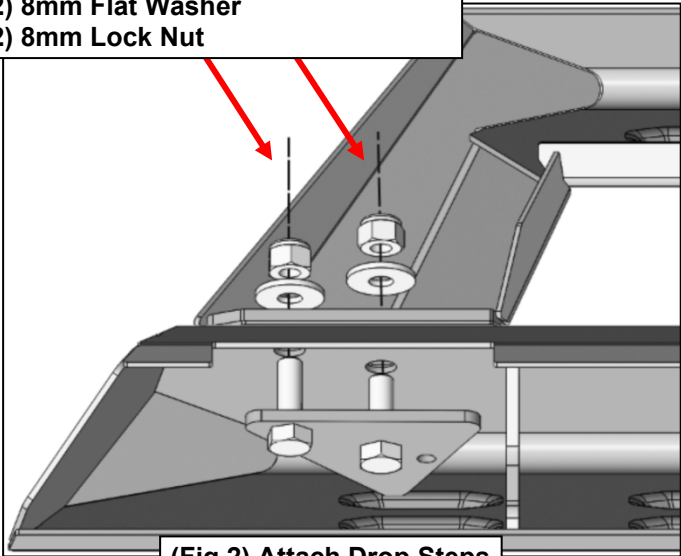
 Ratchet	 13 mm & 16/17 mm Socket	 Extensions	 Wrench
--	---	--	---

1 Follow (Fig 1 – 3) to attach the Drop Steps to the Passenger/Right Main Tube. Repeat the following steps for remaining Drop Steps on the Driver/Left Main Tube.



(Fig 1) Attach Drop Steps to Passenger/Right Main Tube

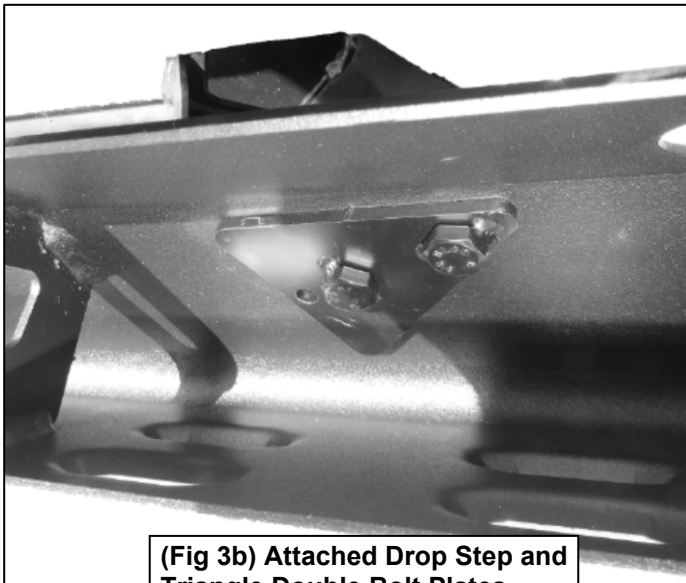
- (1) 8mm Triangular Double Bolt Plate
- (2) 8mm Flat Washer
- (2) 8mm Lock Nut



(Fig 2) Attach Drop Steps



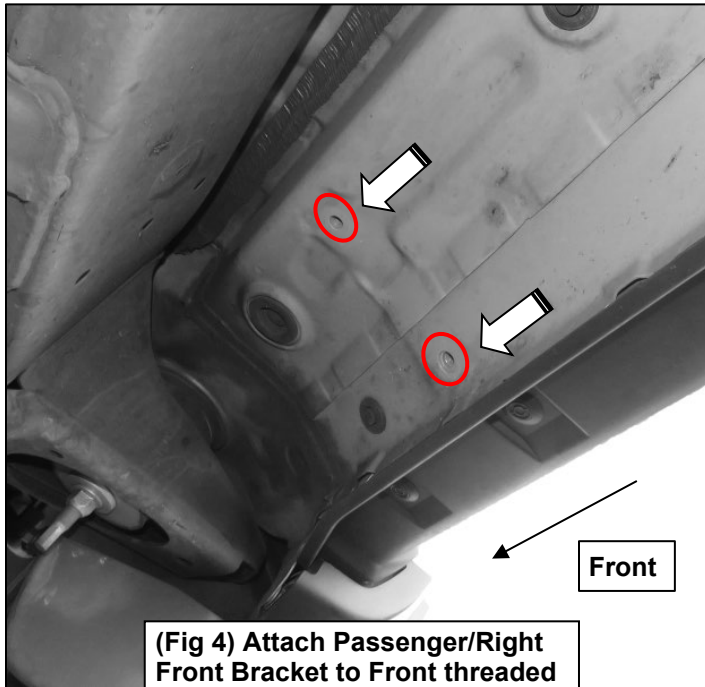
(Fig 3a) Attached Drop Step



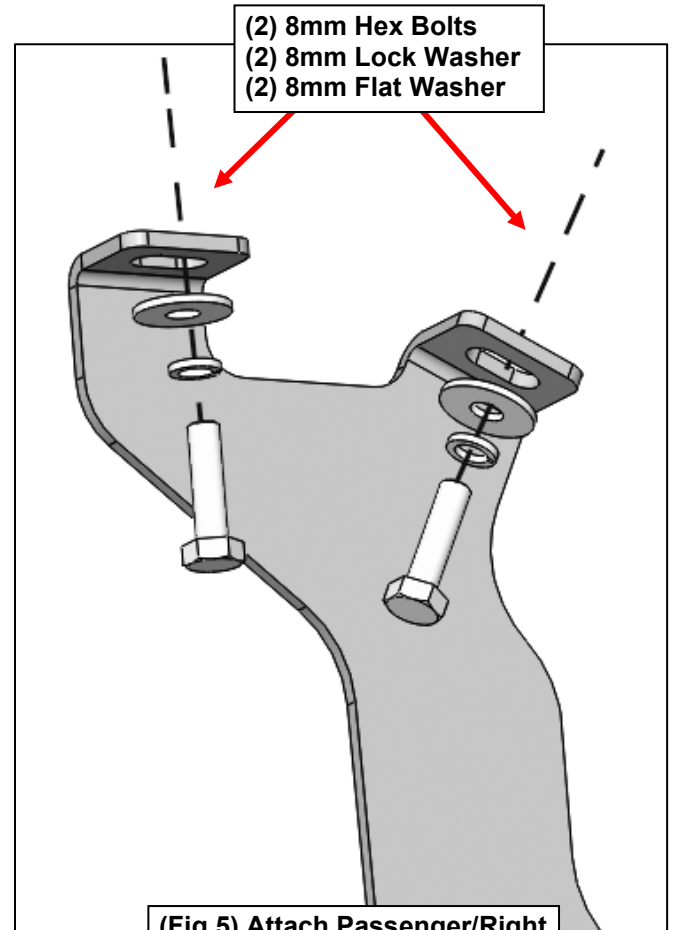
(Fig 3b) Attached Drop Step and Triangle Double Bolt Plates

2

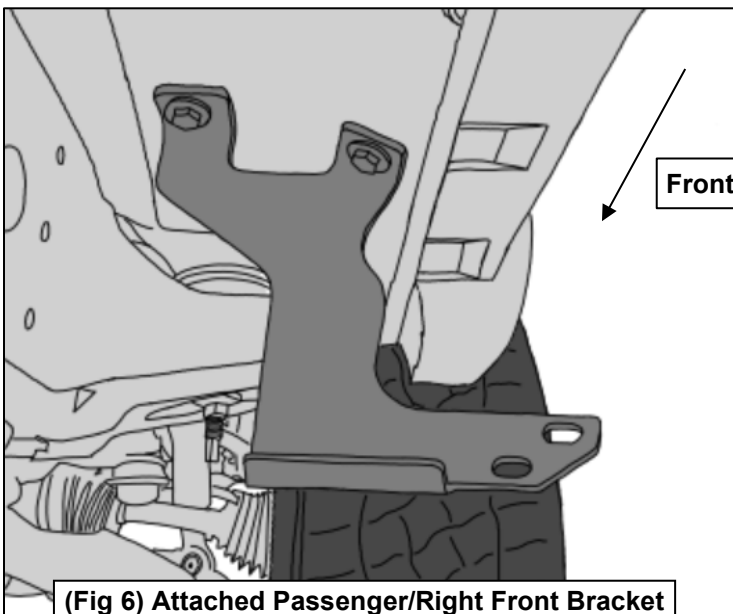
Follow (Fig 4 – 12) to attach the brackets to the Passenger/Right Side. Repeat the following steps on the Driver/Left Side. Ensure fasteners are only hand tight at this point.



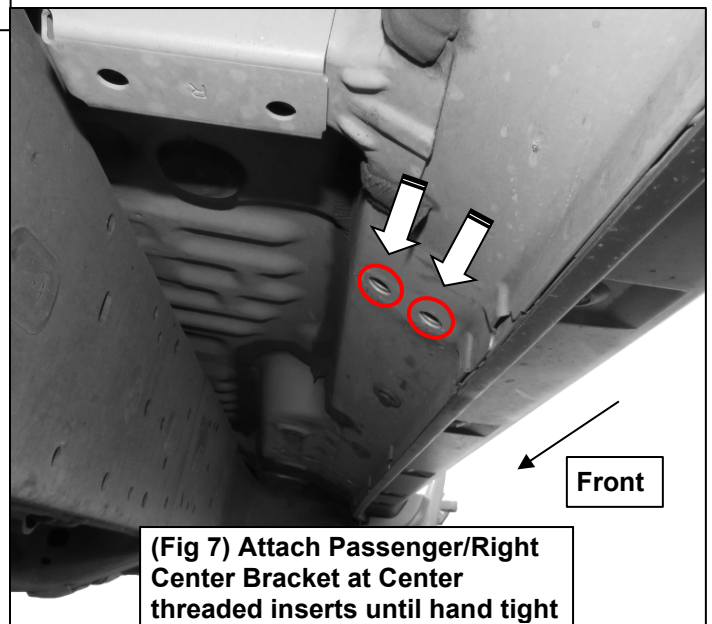
(Fig 4) Attach Passenger/Right Front Bracket to Front threaded inserts until hand tight



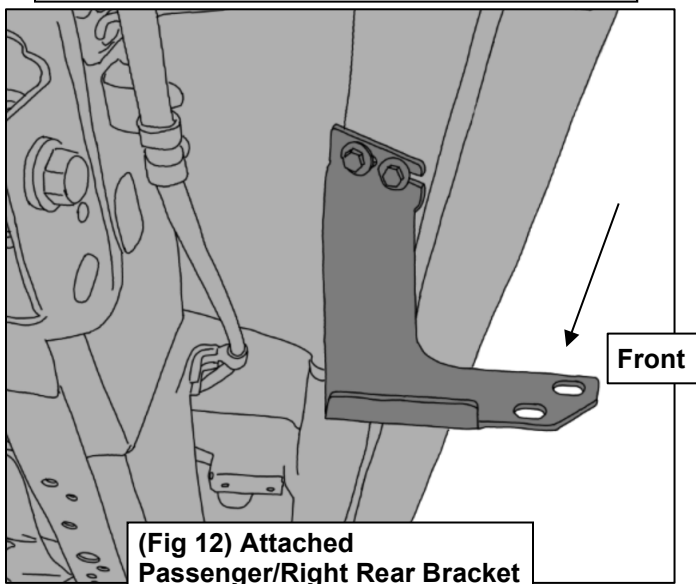
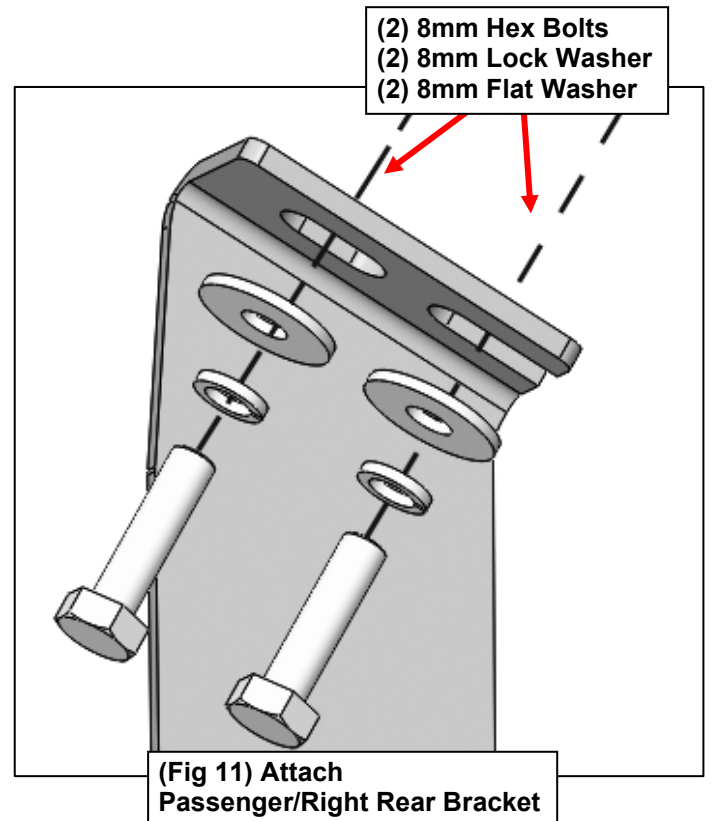
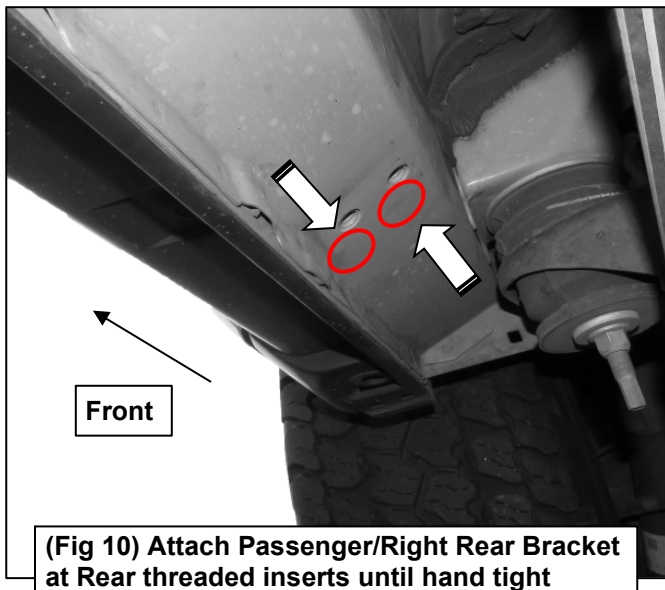
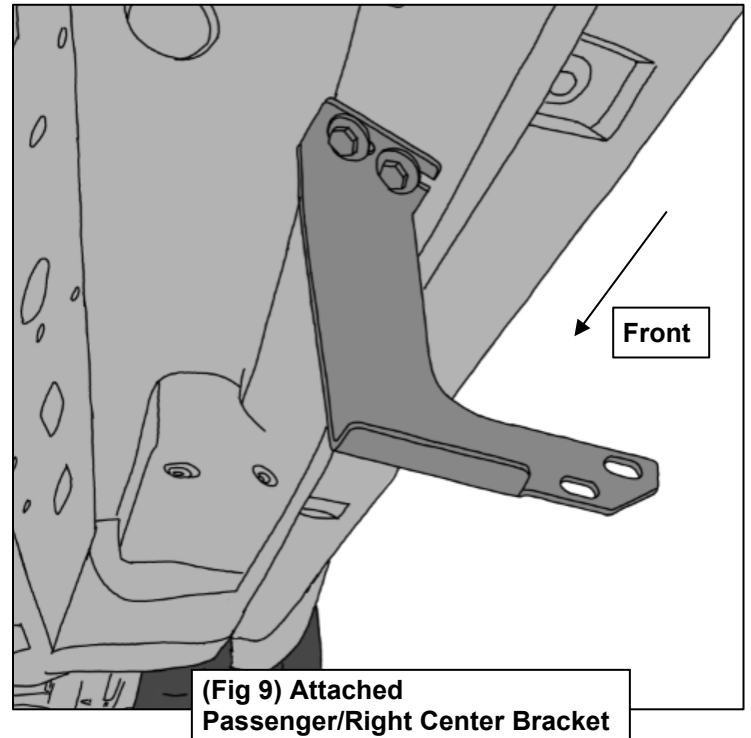
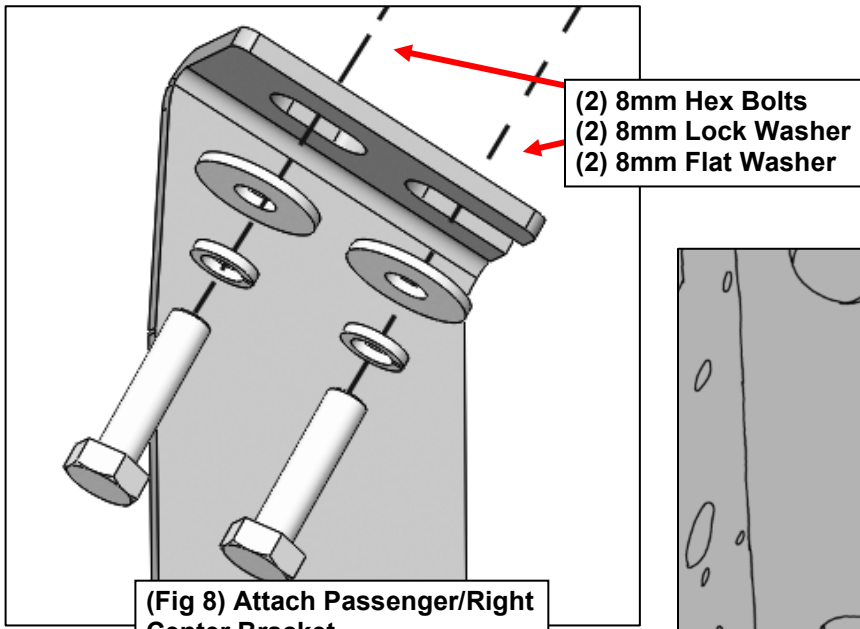
(Fig 5) Attach Passenger/Right Front Bracket



(Fig 6) Attached Passenger/Right Front Bracket



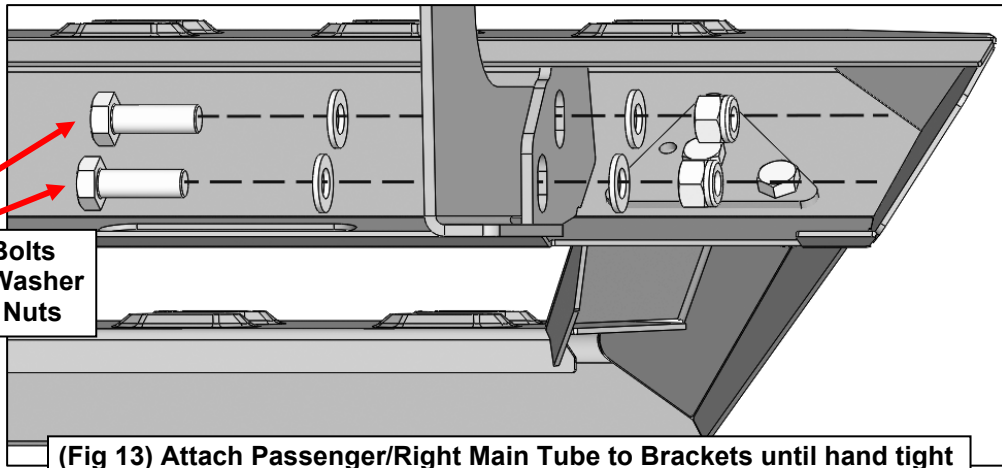
(Fig 7) Attach Passenger/Right Center Bracket at Center threaded inserts until hand tight



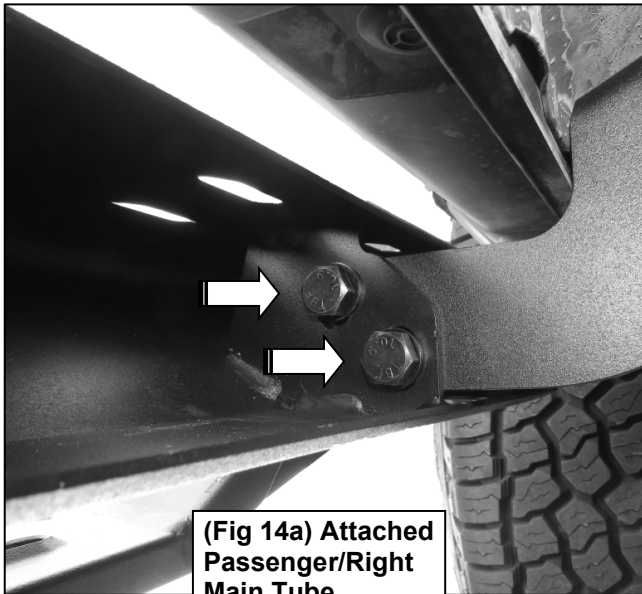
3

Follow (Fig 13-14) to install the Main Tube to the Passenger/Right Side Brackets. Repeat the following steps on the Driver/Left Side. Ensure fasteners are only hand tight at this point.

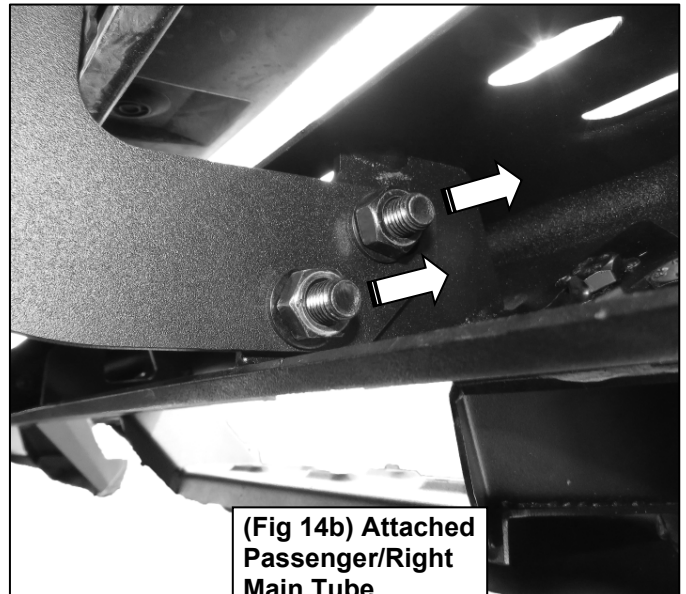
(2) 10mm Hex Bolts
(4) 10mm Flat Washer
(2) 10mm Lock Nuts



(Fig 13) Attach Passenger/Right Main Tube to Brackets until hand tight



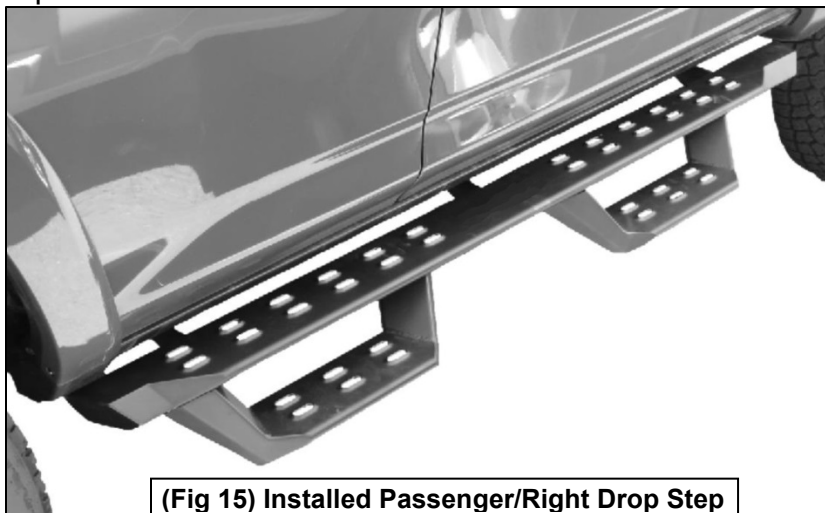
(Fig 14a) Attached Passenger/Right Main Tube



(Fig 14b) Attached Passenger/Right Main Tube

4

At this point, ensure Drop Step is level, then tighten all fasteners. Installation is complete. Do periodic inspections to the installation to make sure that all hardware is secure and tight.



(Fig 15) Installed Passenger/Right Drop Step