



ROOF RACK CROSS BARS FOR OEM ROOF RAILS

(2010-2023 4RUNNER)

INSTALLATION INSTRUCTIONS

CONTENTS

- (2) LH Cross Bar Mounts
- (2) RH Cross Bar Mounts
- (1) Front Cross Bar
- (1) Rear Cross Bar
- (4) M6 Bolts
- (4) M6 Flat Washers
- (1) 10mm Wrench

TOOLS REQUIRED

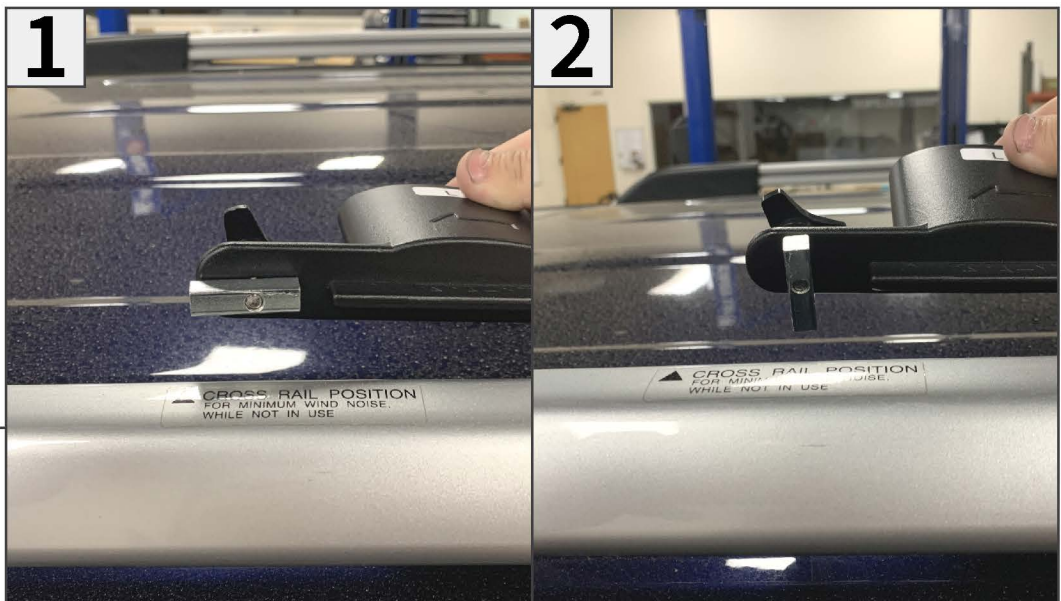
- 10mm Wrench (Provided)
- Flathead Screwdriver



STEP 1

Identify all roof rack cross bar components. Some parts are labeled and are location specific.

Loosely assemble the cross bar mounts to the cross bar using (2) M6 bolts and (2) M6 flat washers per side. The bolts will be tightened with the assembly on the vehicle.



STEP 2

With both mounts loosely installed, lift the assembly into the vehicle roof rail. Ensure the mount blocks are parallel with the roof rail during initial fitment. With each side fitted, loosen the wing nuts and turn the mount blocks to be perpendicular to the roof rail with a flathead screwdriver. Once perpendicular, tighten the wing nuts evenly.



STEP 3

With each side secure, tighten the (2) M6 bolts on each side of the cross bar until secure.

Repeat steps 1-3 for the remaining cross bar. Installation is now complete.