

(Fig 8) Center Bracket installation pictured

## STEP 6

Level and adjust the Sidebar as desired and tighten all hardware. Repeat **Steps 1 – 5** for the driver side Running Board installation.

## STEP 7

Do periodic inspections to the installation to make sure that all hardware is secure and tight.

### Attention

To protect your investment, do not use any type of polish or wax that may contain abrasives that could damage the finish.

Mild soap may be used also to clean the Running Boards.

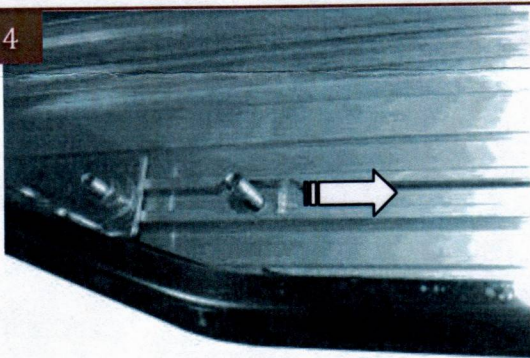
## STEP 3

Repeat **Step 2** for rear Mounting Bracket installation.

## STEP 4

Carefully unwrap the Running Board and select passenger side Board. Select (6) 6mm T-Bolts. Insert (3) T-Bolts into each channel on the bottom of the Running Board, (**Fig 4**). Slide the T-Bolts forward or back to line up with the (3) previously installed Mounting Brackets, (**Fig 5**). Hold the Running Board up to the vehicle at a slight angle and gently push it into position against the rocker panel, (**Fig 6**). Line up the T-Bolts with the slots in the Brackets.

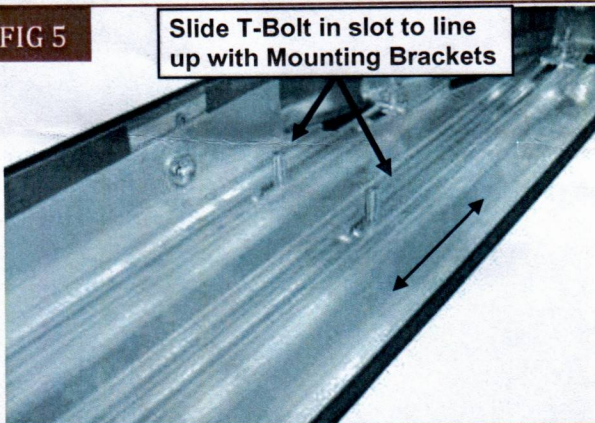
FIG 4



(Fig 4) Insert T-Bolts into channels on bottom of Running Board

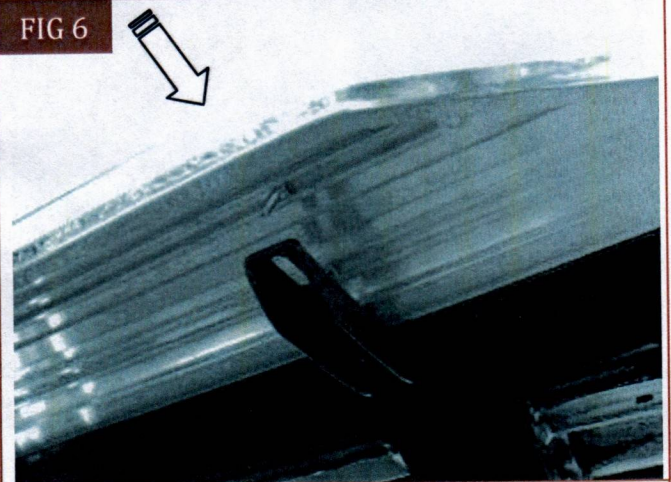
FIG 5

Slide T-Bolt in slot to line up with Mounting Brackets



(Fig 5) Bottom of Running Board pictured

FIG 6

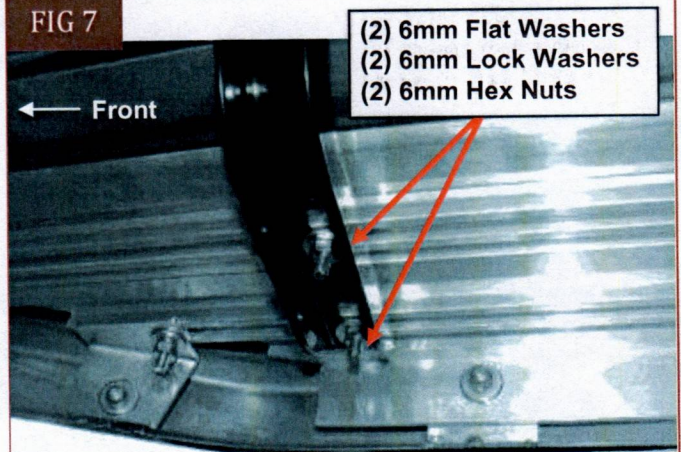


(Fig 6) Tilt the Running Board up and gently push back into position against rocker panel. Line up T-Bolts with Brackets

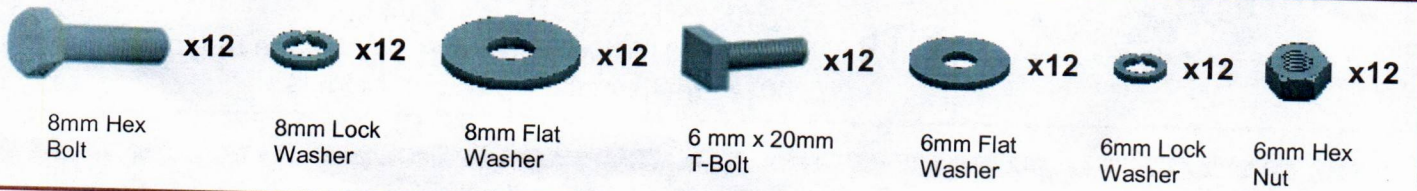
## STEP 5

Attach the Running Board to the Mounting Brackets with the included (6) 6mm Flat Washers, (6) 6mm Lock Washers and (6) 6mm Hex Nuts, (**Figs 7 & 8**). Do not tighten at this time

FIG 7



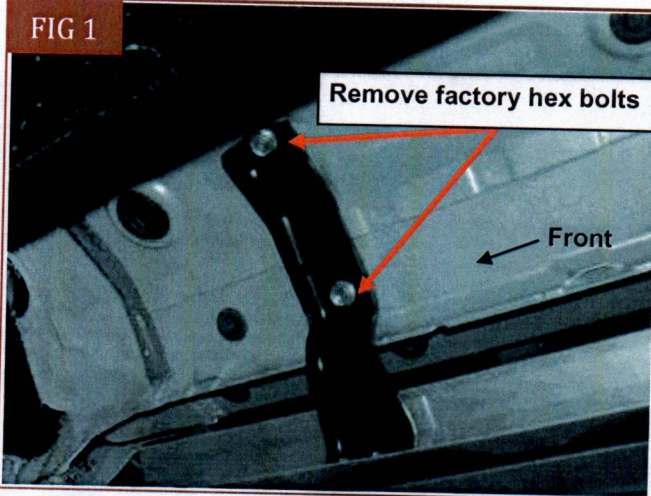
(Fig 7) Front Bracket installation pictured



**PLEASE NOTE THAT THE FOLLOWING PICTURES ARE BASED ON THE PASSENGER SIDE INSTALLATION**

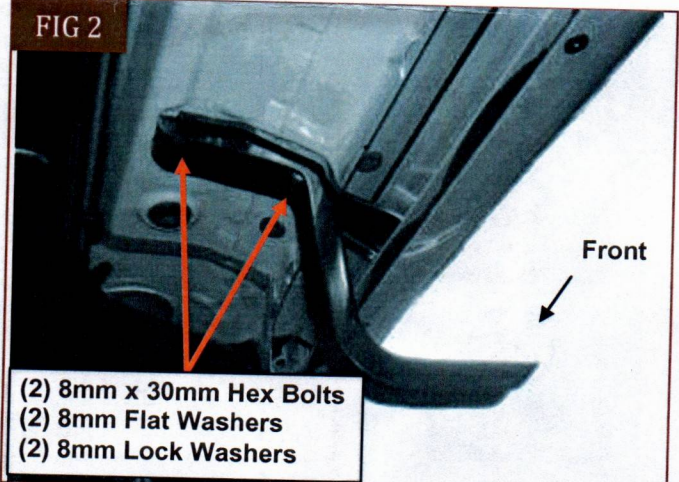
## STEP 1

Starting on the passenger side of the vehicle, remove the existing (2) factory bolts located by the front tire opening securing the factory rocker panel bracket to the vehicle, (**Fig 1**). Select (1) Front Mounting Bracket. Hold the Front Bracket over the rocker panel bracket and line up the (2) mounting holes. Secure the brackets to the vehicle using the included longer (2) 8mm x 30mm Hex Bolts, (2) 8mm Lock Washers and (2) 8mm Flat Washers, (**Fig 2**). Do not tighten hardware at this time.



(Fig 1) Passenger side front mount pictured

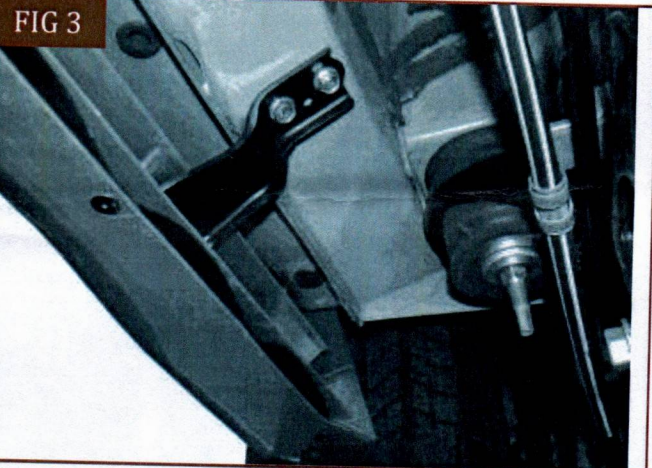
FIG 2



(Fig 2) Install the Mounting Brackets one at a time over the factory rocker panel brackets

## STEP 2

The center and rear brackets are identical. Select (1) Center/Rear Bracket and repeat the procedure as described in **Step 1** to install it in the center mounting location, (**Fig 3**). **NOTE:** Install (1) mounting bracket at a time. Do not tighten hardware at this time.



(Fig 3) Passenger side rear bracket location pictured



# COBRA RUNNING BOARD

PART #: TAC-TWB-017

**FITS:**

2010-2013 Toyota 4Runner SR5  
 2010-Up Toyota 4Runner Limited  
 2020-2021 Toyota 4Runner Nightshade Edition  
 2022-Up 4Runner TRD Sport Models



60-120 min



Cutting Not Required



Drilling Not Required

### Torque & Tools

Fastener Size	Tightening Torque (ft-lbs)	Wrench Required	Allen Wrench Included	
			<input type="checkbox"/>	<input type="checkbox"/>
<input checked="" type="checkbox"/> 6mm	<input checked="" type="checkbox"/> 7-8.5		<input checked="" type="checkbox"/> 10mm	<input type="checkbox"/> 4mm
<input checked="" type="checkbox"/> 8mm	<input checked="" type="checkbox"/> 18-20		<input checked="" type="checkbox"/> 13mm	<input type="checkbox"/> 5mm
<input type="checkbox"/> 10mm	<input type="checkbox"/> 35-40		<input type="checkbox"/> 16mm	<input type="checkbox"/> 6mm
<input type="checkbox"/> 12mm	<input type="checkbox"/> 60-70		<input type="checkbox"/> 18mm	<input type="checkbox"/> 8mm

### BEFORE INSTALLATION

REMOVE CONTENTS FROM BOX. VERIFY ALL PARTS ARE PRESENT. READ INSTRUCTIONS CAREFULLY BEFORE STARTING INSTALLATION. ASSISTANCE IS RECOMMENDED.

### Part List

