



SINGLE SIDE EXIT STAINLESS STEEL EXHAUST SYSTEM

(2009-2022 4RUNNER)

INSTALLATION INSTRUCTIONS

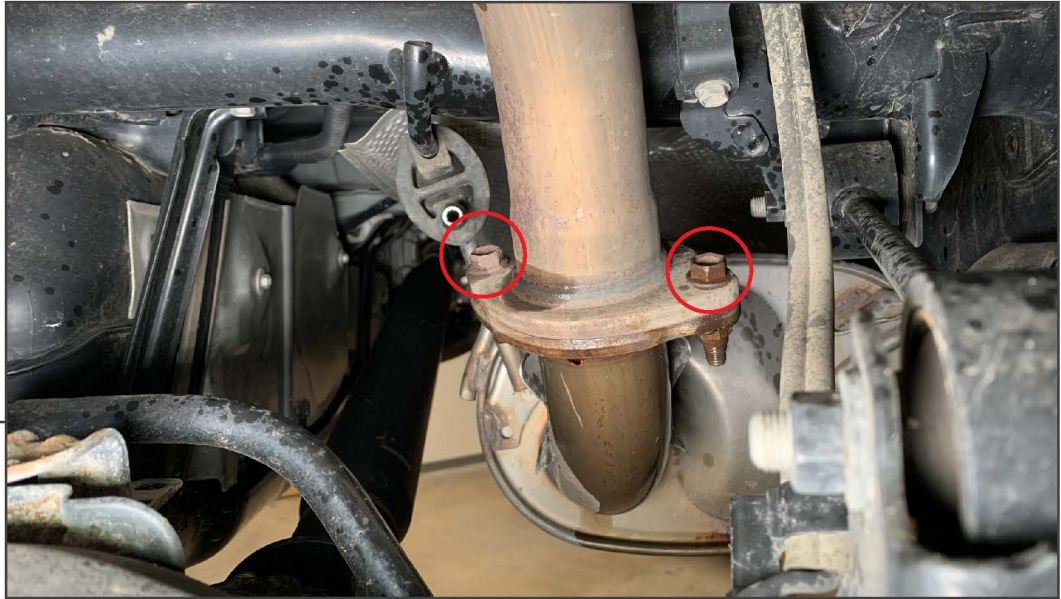
CONTENTS

- (1) Front Pipe
- (1) Muffler
- (1) Over Axle Pipe
- (1) Tail Pipe
- (1) Exhaust Tip
- (5) Exhaust Clamps
- (1) Clamp Hanger 1
- (1) Clamp Hanger 2
- (1) Clamp Hanger 3

TOOLS REQUIRED

- 14mm, 15mm Sockets
- Ratchet
- Torque Wrench
- Spray Lubricant
- Pry Bar

SKU # TR18950 / TR18951
Edited: 09/28/2022

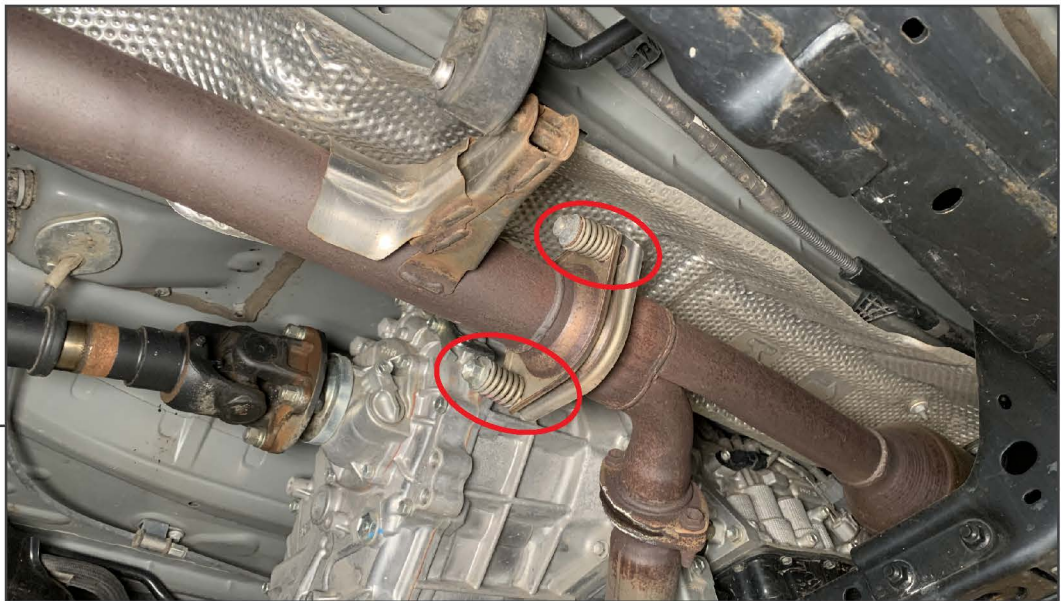


STEP 1

Lift and support the vehicle using a floor jack and jack stands.

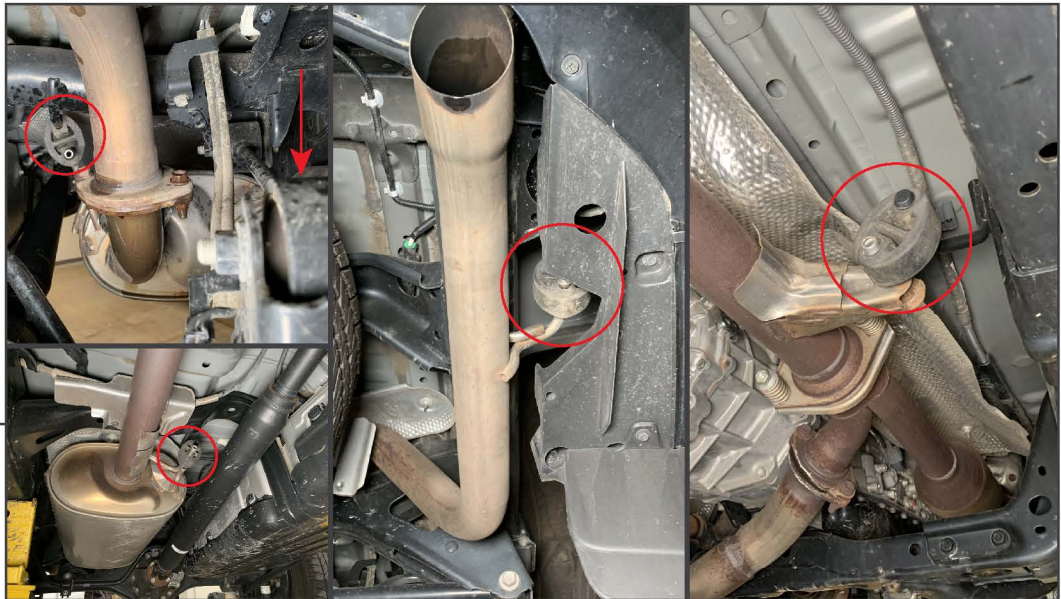
Once supported, locate the flange behind at the rear of the muffler, and remove the (2) 14mm bolts from the tailpipe assembly.

Note: The lower nuts are welded to the flange, the bolt must be removed from the top. Spray lubricant may assist in removal.



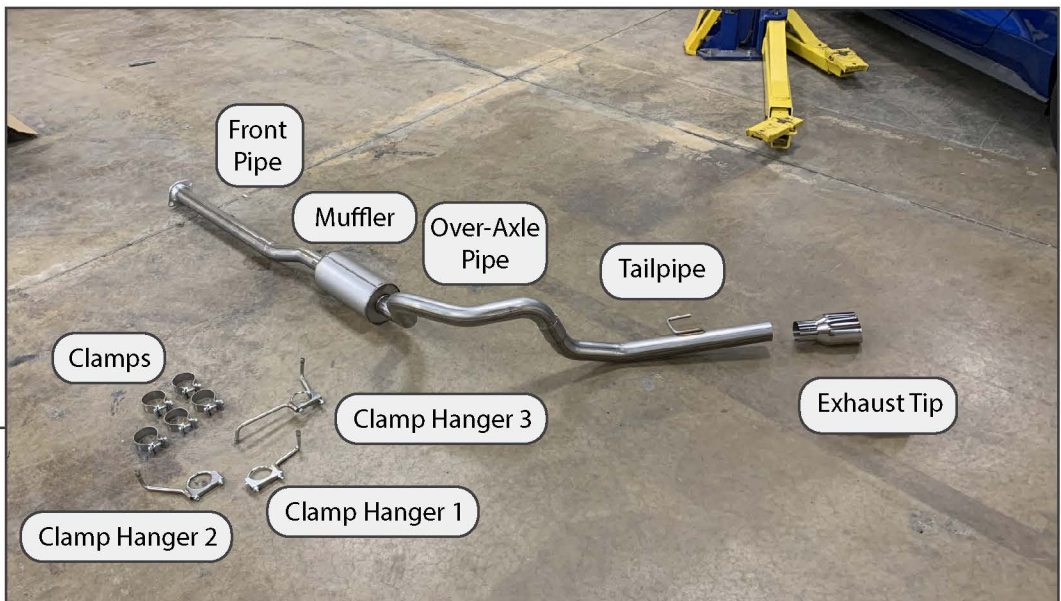
STEP 2

Remove the (2) 14mm spring bolts from the exhaust flange.



STEP 3

Remove the (5) various rubber hangers from the exhaust system, and remove the exhaust system from the vehicle.



STEP 4

Lay out and identify all exhaust components.



STEP 5

Install the (1) front pipe to the vehicle exhaust flange, and secure into place using the original (2) 14mm spring bolts.

Fit the “Clamp Hanger 1” into the rubber exhaust hanger, and clamp the hanger around the front pipe. Place (1) exhaust clamp onto the end of the front pipe to prepare for the “S” pipe installation.



STEP 6

Install the “S” pipe to the previously installed front pipe, and loosely secure using (1) exhaust clamp.

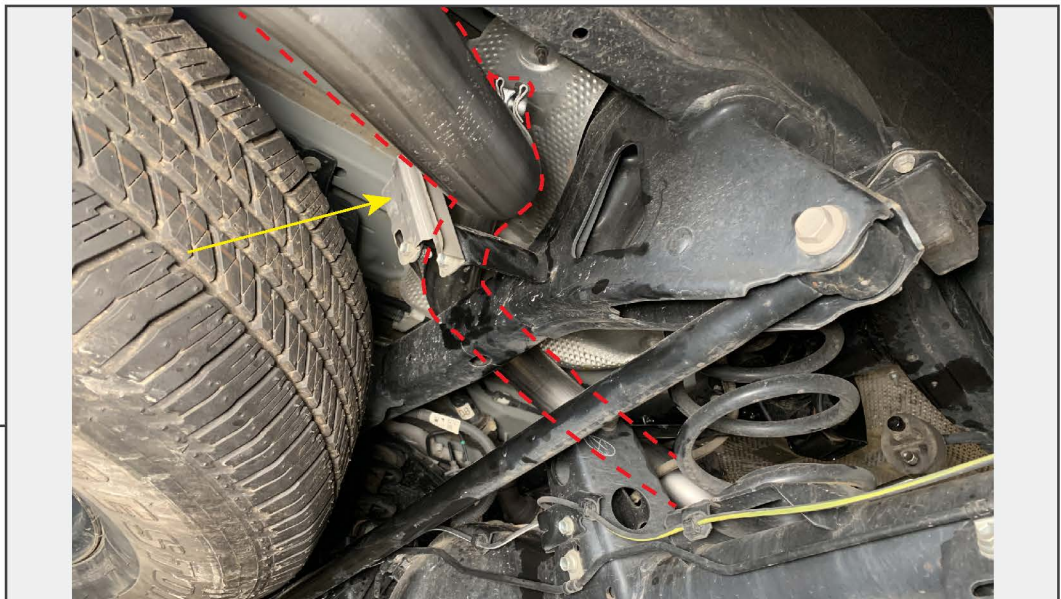
Fit the “Clamp Hanger 2” into the rubber exhaust hanger, and clamp the hanger around the rear section of the front pipe. Place (1) exhaust clamp onto the end of the “S” pipe to prepare for the muffler installation.



STEP 7

Install the muffer to the previously installed “S” pipe, and loosely secure using (1) exhaust clamp.

Fit the “Clamp Hanger 3” into the rubber exhaust hanger, and clamp the hanger around the rear section of the muffer. Place (1) exhaust clamp onto the end of the muffer to prepare for the over-axle pipe installation.



STEP 8

Route the over axle pipe into the vehicle along the original exhaust location. Install the over axle pipe into the muffer, and loosely secure using (1) exhaust clamp. Note: The indicated heat shield may require massaging to ensure proper exhaust pipe clearance.

Place (1) exhaust clamp onto the end of the over axle pipe to prepare for the tailpipe installation.



STEP 9

Install the tailpipe to the previously installed over axle pipe, and loosely secure using (1) exhaust clamp.

Place (1) exhaust clamp onto the end of the tailpipe to prepare for the exhaust tip installation.



STEP 10

Install the exhaust tip to the tailpipe using (1) exhaust clamp. Adjust the exhaust for the best fit, then tighten all of the exhaust mounting hardware/clamps. Tighten all clamps/hardware to the specified torque rating. Installation is now complete.

Exhaust Clamps: 45 ft./lbs.

Front Flange 14mm Spring Bolts: 35 ft./lbs.