



## JEEP 2020-21 Gladiator JT Bed Front Molle Panel Kit

Thank you for choosing Rough Country for all your vehicle needs.

Please read instructions before beginning installation. Check the kit hardware against the kit contents shown below. Be sure you have all needed parts and know where they go.

If question exist, please call us @1-800-222-7023. We will be happy to answer any questions concerning this product.

Check all fasteners for proper torque. Check to ensure for adequate clearance between all components.

Periodically check all hardware for tightness.

### Kit Contents:

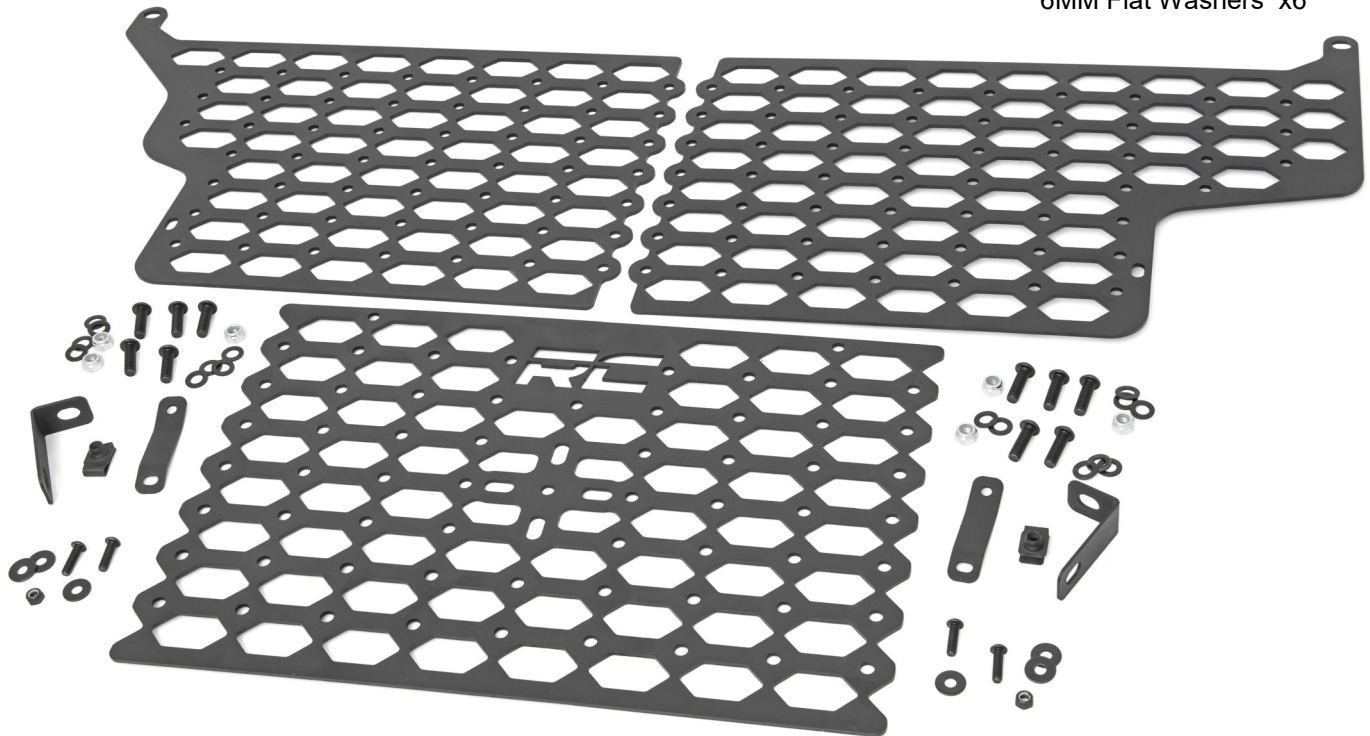
Front Dr Molle Panel x1  
Front Pass Molle Panel x1  
Front Center Molle Panel x1  
L-Brackets x2  
Top Brackets x2

### Tools Needed:

4mm Allen Wrench  
5mm Allen Wrench  
10mm Wrench  
13mm Wrench  
T45 Torx Bit

### Hardware Included:

8MM-1.25X25MM Bolts x10  
8MM-1.25 Lock Nuts x6  
8MM Flat Washers x16  
8MM Clip Nuts x2  
6MM-1.0x20MM Bolts x4  
6MM-1.0 Lock Nuts x2  
6MM Flat Washers x6



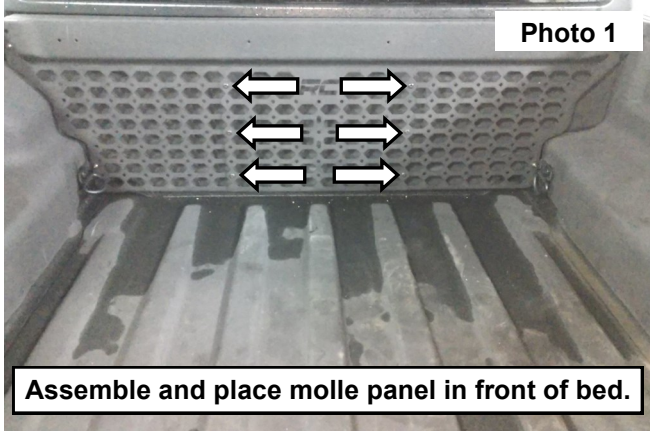
### Torque Specs:

Size	Grade 5	Grade 8	Size	Class 8.8	Class 10.9
5/16"	15 ft/lbs	20ft/lbs	6MM	5ft/lbs	9ft/lbs
3/8"	30 ft/lbs	35ft/lbs	8MM	18ft/lbs	23ft/lbs
7/16"	45 ft/lbs	60ft/lbs	10MM	32ft/lbs	45ft/lbs
1/2"	65 ft/lbs	90ft/lbs	12MM	55ft/lbs	75ft/lbs
9/16"	95 ft/lbs	130ft/lbs	14MM	85ft/lbs	120ft/lbs
5/8"	135ft/lbs	175ft/lbs	16MM	130ft/lbs	165ft/lbs
3/4"	185ft/lbs	280ft/lbs	18MM	170ft/lbs	240ft/lbs



## INSTALLATION INSTRUCTIONS

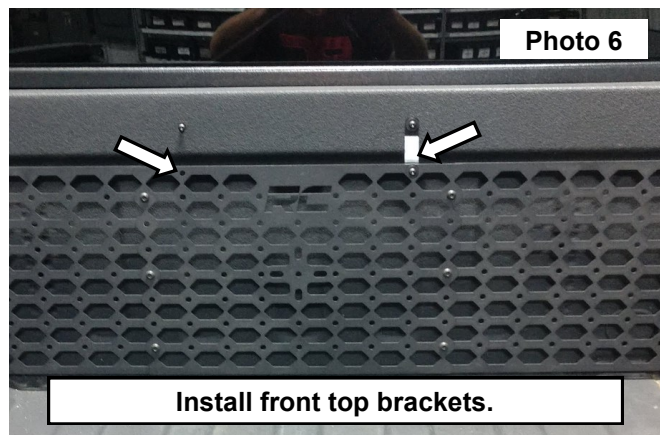
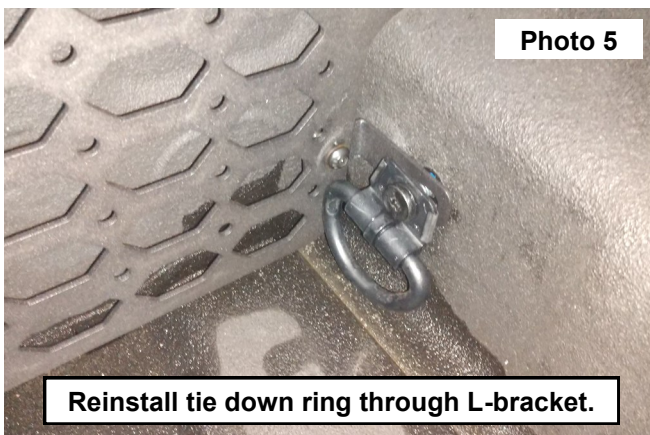
1. Assemble the 3 pieces of the molle panel with the 8mm bolts, nuts, and washers using a 5mm Allen wrench and 13mm socket/wrench and place the panel in the front of the bed. **See Photo 1.**
2. Remove the stock tie down ring from the driver and passenger sides using a T45 Torx bit. **See Photo 2.**



3. Install the L-brackets on the lower corners of the molle panel using the supplied 8MM bolts and clip nuts. Tighten using a 5mm Allen wrench. **See Photo 3.**
4. Align and install the upper corners using the supplied 8MM bolts and a 5mm Allen wrench. **See Photo 4.**



5. Reinstall the stock tie down ring through the L-bracket with stock hardware using T45 Torx bit. **See Photo 5.**
6. Install the front top brackets using the supplied 6mm bolts, nuts, and washers using a 4mm Allen wrench and 10mm wrench. **See Photo 6.**



By purchasing any item sold by Rough Country, LLC, the buyer expressly warrants that he/she is in compliance with all applicable, State, and Local laws and regulations regarding the purchase, ownership, and use of the item. It shall be the buyers responsibility to comply with all Federal, State and Local laws governing the sales of any items listed, illustrated or sold. The buyer expressly agrees to indemnify and hold harmless Rough Country, LLC for all claims resulting directly or indirectly from the purchase, ownership, or use of the items.







## JEEP 2020-21 Gladiator JT Bed Side Molle Panels Kit

**Thank you for choosing Rough Country for all your vehicle needs.**

Please read instructions before beginning installation. Check the kit hardware against the kit contents shown below. Be sure you have all needed parts and know where they go.

If question exist, please call us @1-800-222-7023. We will be happy to answer any questions concerning this product.

Check all fasteners for proper torque. Check to ensure for adequate clearance between all components.

Periodically check all hardware for tightness.

### Kit Contents:

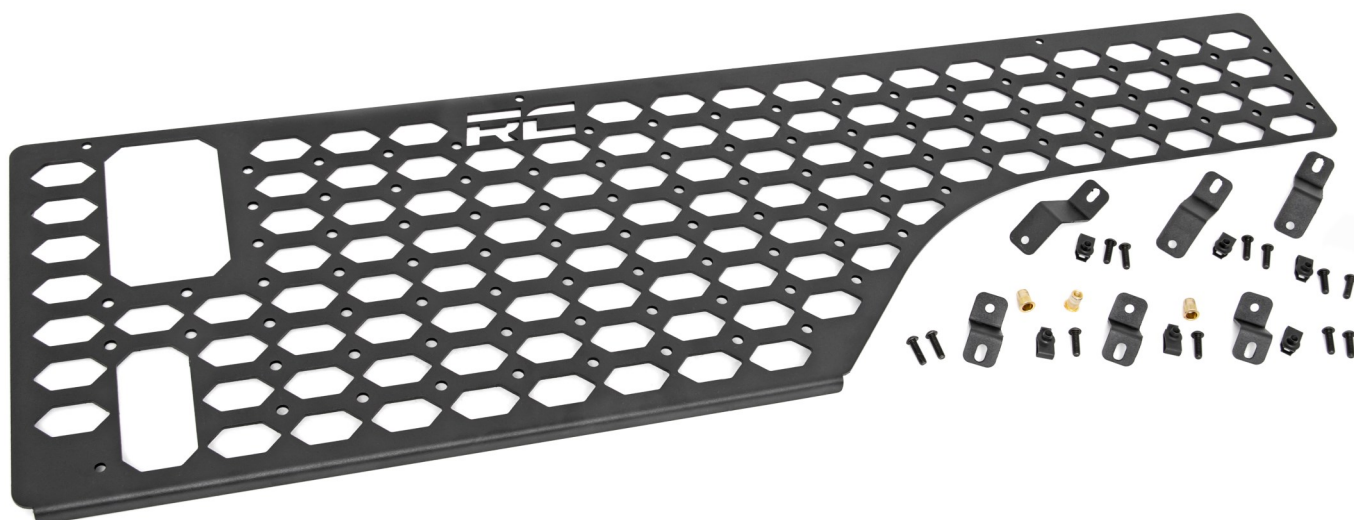
Side Molle Panel x1  
Top Brackets x3  
Bottom Brackets x3

### Tools Needed:

4mm Allen Wrench  
10mm Wrench  
25/64" (10MM) Drill Bit  
M6 x 1 Tap

### Hardware Included:

6MM-1.0x20MM Bolts x12  
6MM Clip Nuts x2  
6MM Flat Washers x14  
6MM Nutserts x3  
6MM-1.0x35MM Bolt x1  
5/16"-1.0 Nut x1



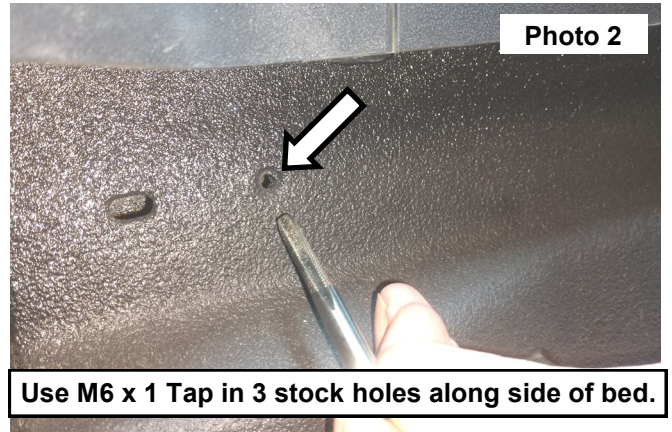
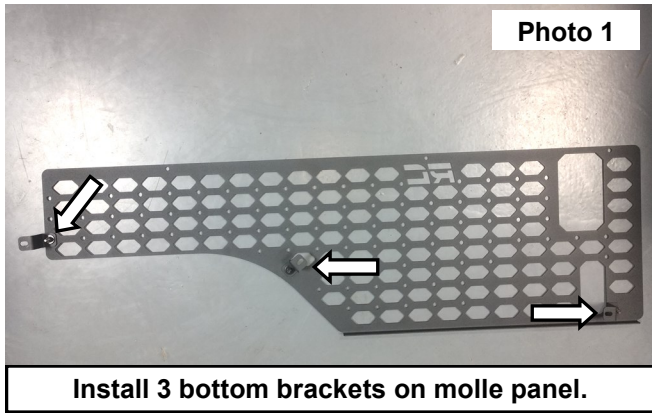
### Torque Specs:

Size	Grade 5	Grade 8	Size	Class 8.8	Class 10.9
5/16"	15 ft/lbs	20ft/lbs	6MM	5ft/lbs	9ft/lbs
3/8"	30 ft/lbs	35ft/lbs	8MM	18ft/lbs	23ft/lbs
7/16"	45 ft/lbs	60ft/lbs	10MM	32ft/lbs	45ft/lbs
1/2"	65 ft/lbs	90ft/lbs	12MM	55ft/lbs	75ft/lbs
9/16"	95 ft/lbs	130ft/lbs	14MM	85ft/lbs	120ft/lbs
5/8"	135ft/lbs	175ft/lbs	16MM	130ft/lbs	165ft/lbs
3/4"	185ft/lbs	280ft/lbs	18MM	170ft/lbs	240ft/lbs

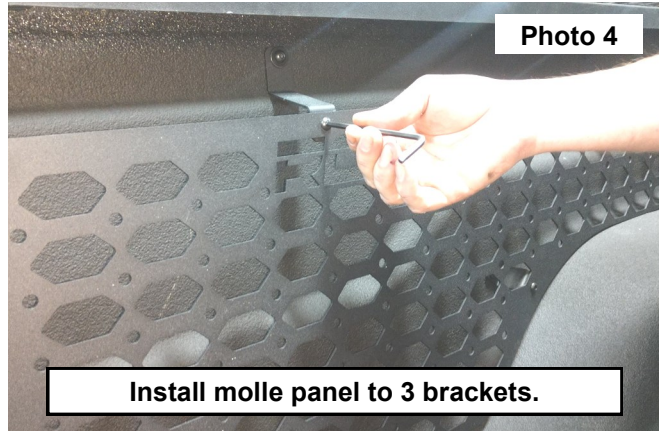
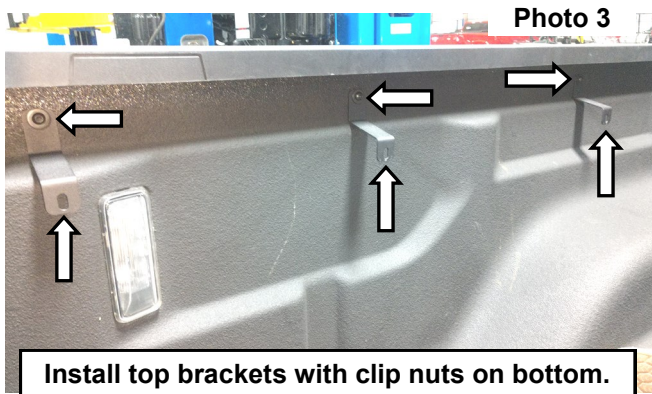


## INSTALLATION INSTRUCTIONS

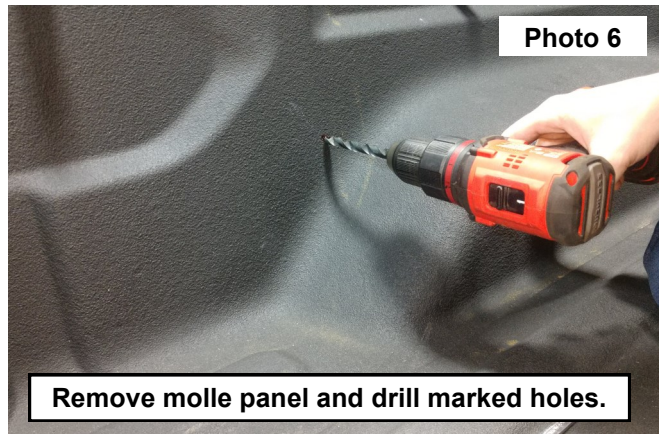
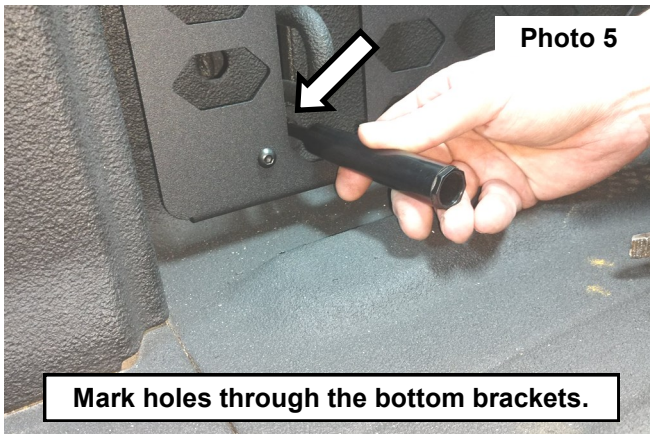
1. Install a 6mm clip nut onto (3) brackets. Then install the (3) brackets onto the bottom of the molle panel. Secure using the 6mm Bolts and 6mm flat washers. Tighten using a 4mm Allen wrench. **See Photo 1.**
2. Use a M6 x 1 Tap in the 3 holes along the side of the bed and install the 3 top brackets in the side of the bed using the supplied 6mm bolts and washers. **See Photo 2 and Photo 3.**



3. Install the molle panel to the 3 brackets on the side of the bed using the supplied 6mm bolts. **See Photo 4.**

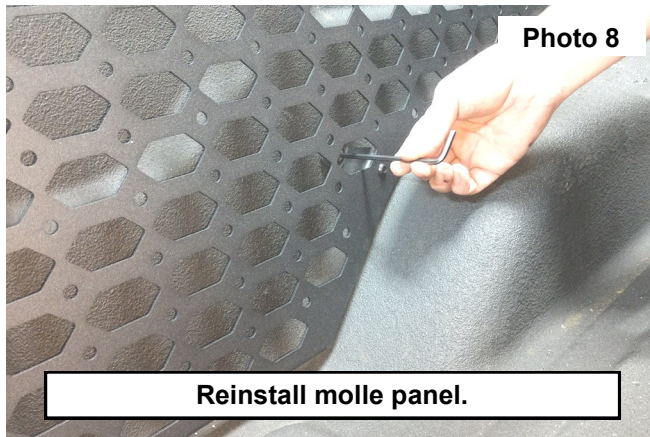
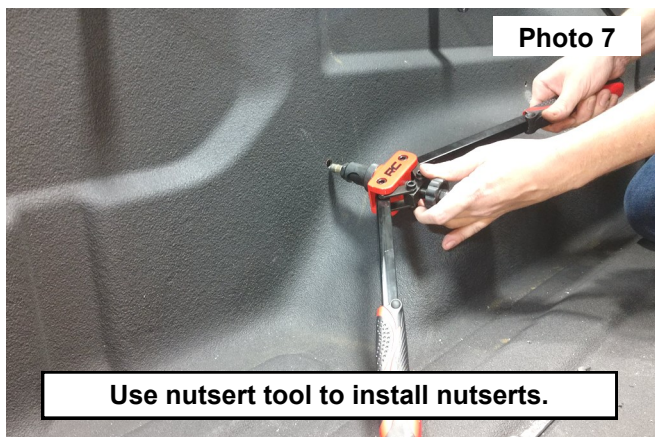


4. Adjust the bottom brackets on the molle panel as needed and mark the holes to be drilled. **See Photo 5.**
5. Remove the molle panel and drill the marked holes using a 25/64" (10MM) Drill bit. **See Photo 6.**





6. Use a nutsert tool to install the supplied 6mm nutserts in the drilled holes. **See Photo 7.**
7. Reinstall the molle panel with the supplied 6mm bolts and washers using a 4mm Allen wrench. **See Photo 8.**



By purchasing any item sold by Rough Country, LLC, the buyer expressly warrants that he/she is in compliance with all applicable, State, and Local laws and regulations regarding the purchase, ownership, and use of the item. It shall be the buyers responsibility to comply with all Federal, State and Local laws governing the sales of any items listed, illustrated or sold. The buyer expressly agrees to indemnify and hold harmless Rough Country, LLC for all claims resulting directly or indirectly from the purchase, ownership, or use of the items.

