

REDROCK



COWL ARMOR

(2018-2025+ WRANGLER JL - EXCL. 392 & 4xE)

INSTALLATION INSTRUCTIONS

CONTENTS

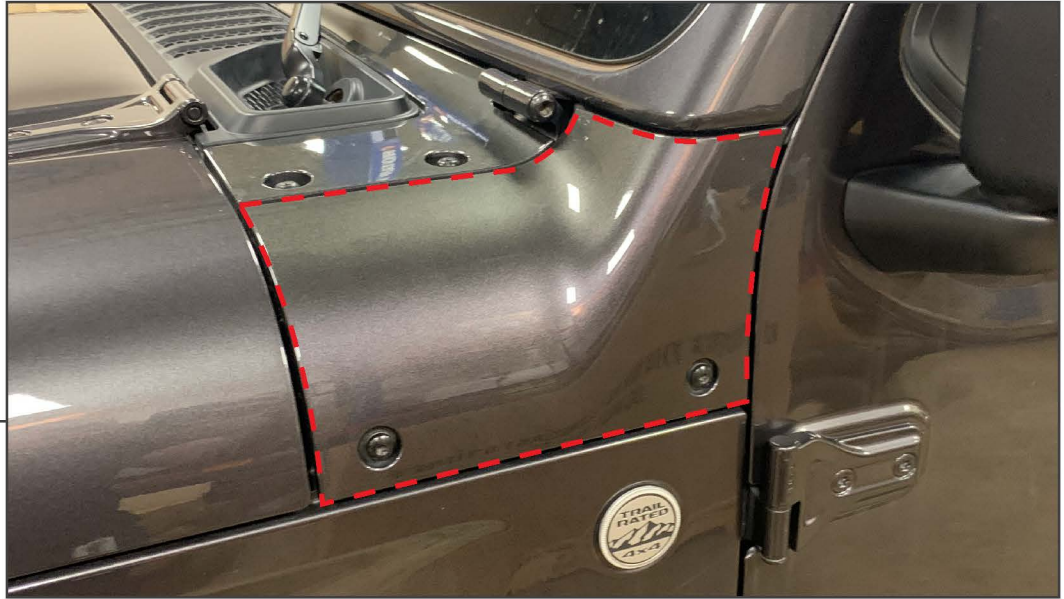
- (1) LH Cowl Armor
- (1) RH Cowl Armor

TOOLS REQUIRED

Isopropyl Alcohol

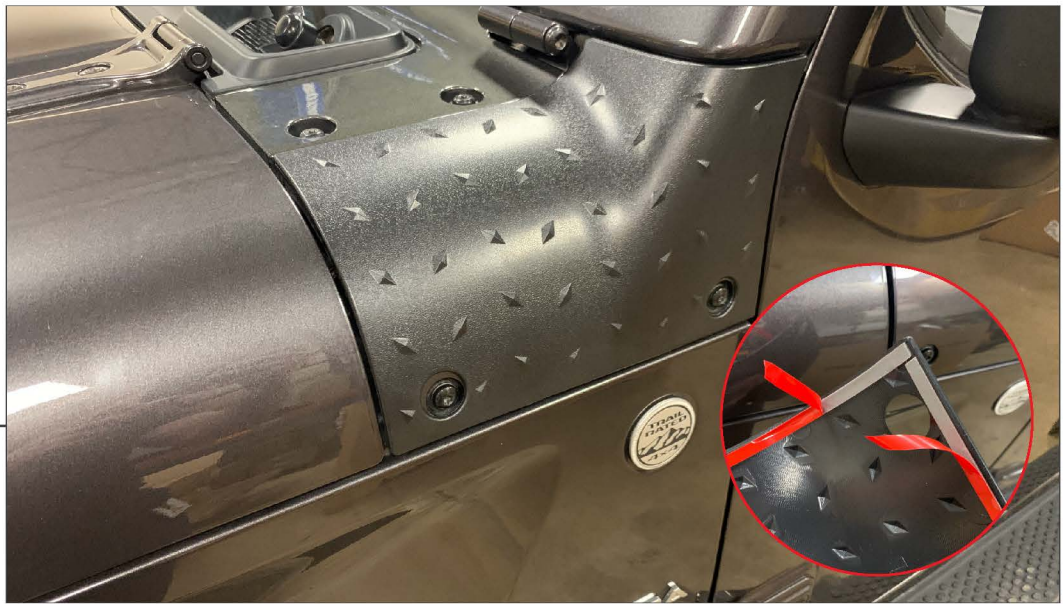
SKU # J133789-JL

STEP 1



Prepare for the installation by thoroughly cleaning and drying the cowl panel. Once the panel is dry, wipe the panel down with isopropyl alcohol to remove any remaining wax and grease. Wait for all remaining alcohol to flash dry prior to installing the cowl armor.

STEP 2



Test fit the armor to the panel prior to removing the double sided tape backing. Then remove the tape backing, line up the armor and press the armor onto the vehicle. Apply firm even pressure over the taped surfaces to ensure proper adhesion.