

Avenger Hood - Unpainted 2020+ Gladiator JT

Contents:

- (1) Avenger Hood
- (3) Hood Insulators
- (2) Hood Bezels

Tools Needed:

- Trim Panel Removal Tool
- T50 Torx Bit
- 10mm Socket
- 1/4" or 3/8" Ratchet
- Utility Knife
- Clean Towel & Isopropyl Alcohol

****Note: Test Fit Hood Prior To Painting**



Begin by unlatching the hood.



Next, lift the hood to locate the windshield washer fluid hose connection. Disconnect the hose connection.



Using a T50 torx bit, carefully unbolt the hood hinges from the hood. With a helper, carefully remove the hood and place upside down on a non abrasive surface.



Using a trim panel removal tool, remove the (12) plastic push pins securing the hood liner to the hood. Remove the hood liner.



Remove the (2) 10mm hood latch bolts, and (1) 10mm hood stopper bolt. Remove both the hood latch and the hood stopper. Transfer both the hood latch and the hood stopper to the new hood using the factory hardware.



6

Remove the (2) 10mm bolts securing the hood prop rod to the factory hood. Remove the hood prop rod. Transfer the hood prop rod to the new hood using the factory hardware.



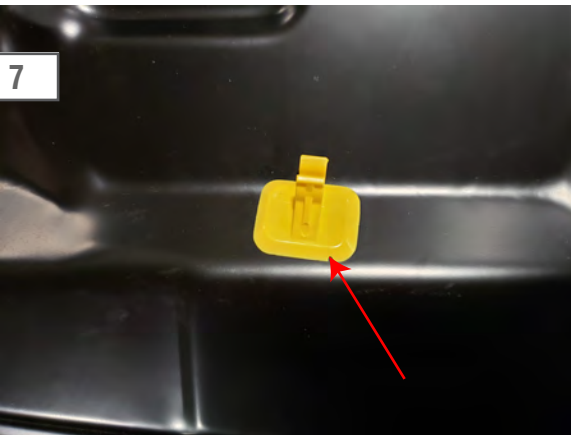
8

Remove the (2) 10mm nuts that hold the hood latch to the hood. Remove the latch from the hood. Transfer the hood latch to the new hood using the factory hardware. Do the same for the opposite side.



10

Remove the (2) 10mm nuts securing the windshield washer fluid squirter's on each side. Remove the squirter's from the hood. Transfer the squirter's to the new hood.



7

Using a trim panel removal tool, carefully remove the hood prop retainer clip. Transfer to the new hood.



9

Using a trim panel removal tool, carefully pry up to release the windshield washer nozzle hose from the hood. Then disconnect the hose from the squirter's. Remove the hose from the factory hood.



11

Install the factory windshield washer fluid hose line to the new hood. Trim to fit.

12



Using a isopropyl alcohol, clean the new hood where the heat shields will be applied. Peel the backing off the supplied heat shields. Install the supplied heat shields to the new hood by applying firm even pressure to the tapped surfaced areas to ensure proper adhesion.

13



Using a isopropyl alcohol, clean the new hood where the hood bezels will be applied. Allow time to dry. Test fit the hood bezels to familiarize where they install. Remove the tape red tape backing on the hood bezels. Apply firm even pressure to the tapped surfaced areas to ensure proper adhesion.

14



Install the hood to the hood hinges using the (4) T50 torx bolts. Be sure to align hood for proper open and closure. Reconnect the windshield washer hose line from Step 2. Installation is now complete.