



ACCESS POWER RUNNING BOARDS

(2018-2026+ WRANGLER JL)
(2020-2026+ GLADIATOR JT)

INSTALLATION INSTRUCTIONS

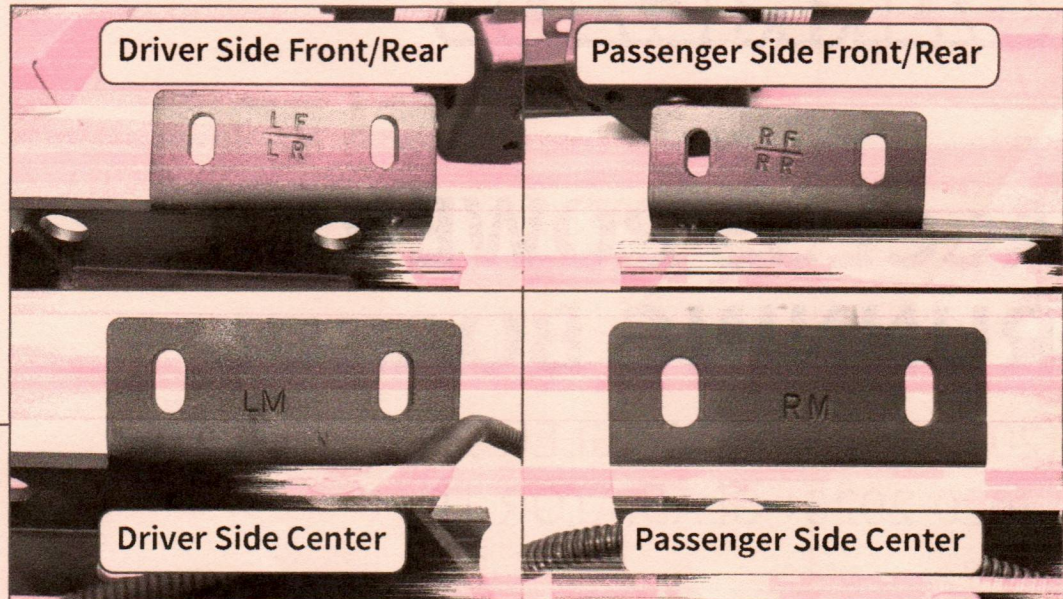
CONTENTS

- | | |
|---|---|
| (1) LH Running Board | (1) Control Module w/ M6 Hardware |
| (1) RH Running Board | (1) Wire Harness Fishing Lead |
| (2) LH Front/Rear Mounting Brackets | (6) Wire Retainers w/ 6 Phillips Screws |
| (1) LH Center Mounting Bracket w/ Motor | (18) M8x1.25 Flange Nuts |
| (2) RH Front/Rear Mounting Brackets | (18) M8 Flat Washers |
| (1) RH Center Mounting Bracket w/ Motor | (18) M8 Flange Nuts |
| (1) Main Wiring Harness | (12) M6x1.00 x 25mm Allen Bolts |
| (4) Door Switches w/ Magnets | (12) M6 Lock Washers |
| (1) LH Motor Harness Lead | (10) Mounting Shims |
| (1) RH Motor Harness Lead | (20) Cable Ties |

TOOLS REQUIRED

- | | |
|----------------------|--------------------|
| 13mm Wrench/Socket | 4.5" Angle Grinder |
| 6mm Allen Socket/Key | 4.5" Cut-off Disc |
| Ratchet | 4.5" Grinding Disc |
| Phillips Screwdriver | |
| Plastic Pry Tool | |
| Electrical Tape | |
| Razor Knife | |

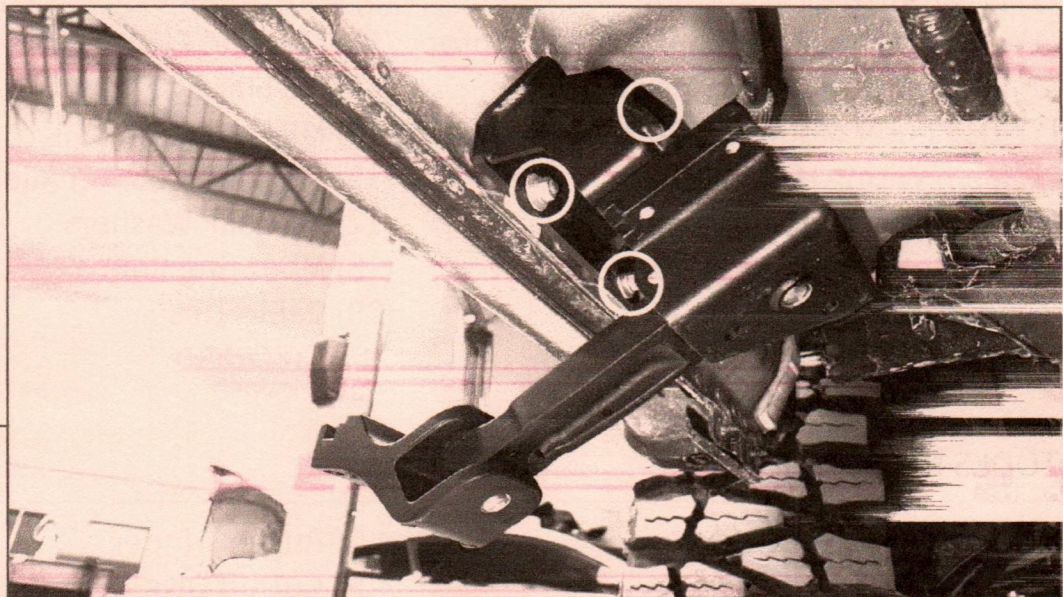
SKU # J245336 / J245338 /
JG49487 / JG49488

**STEP 1**

Lay out and identify all components. Identify the LH/RH, as well as Front/Rear mounting brackets using the diagram above.

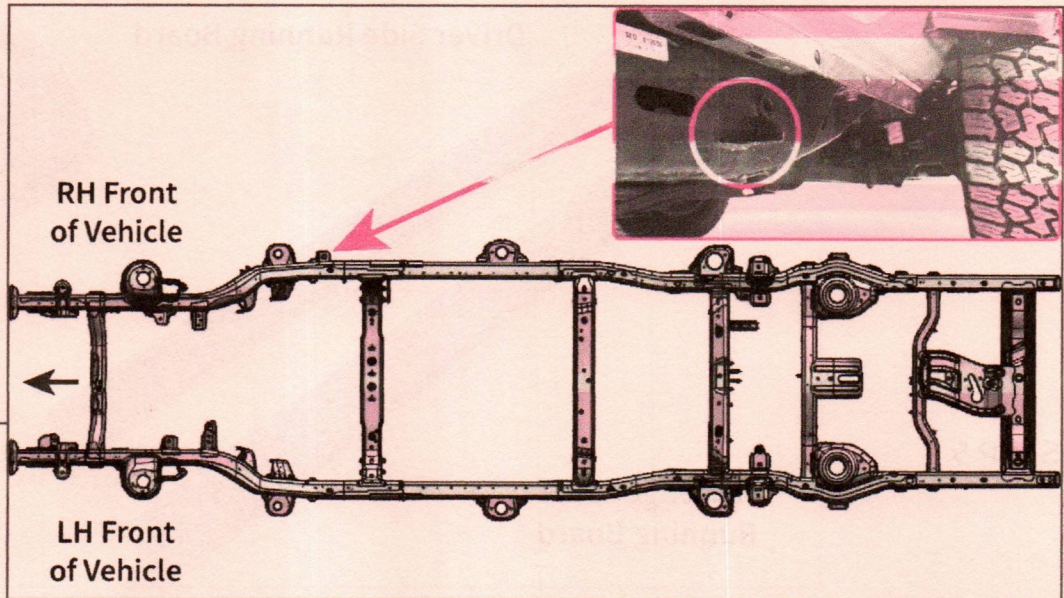
The bracket will bolt directly to the vehicle mounting points.

Note: Visit Step 3-4 to reference frame modification required for 2020+ Gladiator JT RF bracket installation.

**STEP 2**

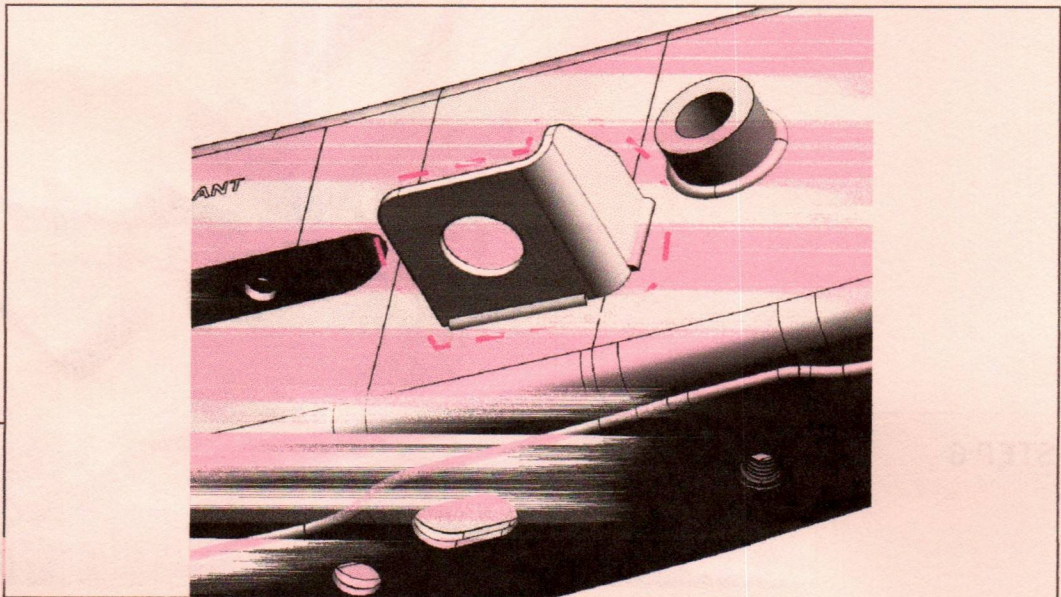
Using the included (3) M8 bolts, (3) M8 flat washers, and (2) M8 nuts, loosely secure each mounting bracket to the vehicle M8 mounting studs in the vehicle rocker panels. Allow the brackets to remain loose to allow for adjust-ability later. Expanding the rocker panel holes with a drill & drill bit may be necessary.

Note: Do not force the center mounting bracket to fold down. The running board will mount to the brackets in the folded up position.

STEP 3
[JT FRAME
MODIFICATION]

Installation to 2020+ Gladiator JT vehicles will require cutting a OEM bracket from the frame to provide clearance for the RF mounting bracket assembly.

Locate the designated mounting bracket on the RH front vehicle frame on the vehicle (behind RH front wheel, under the front of the passenger front door).

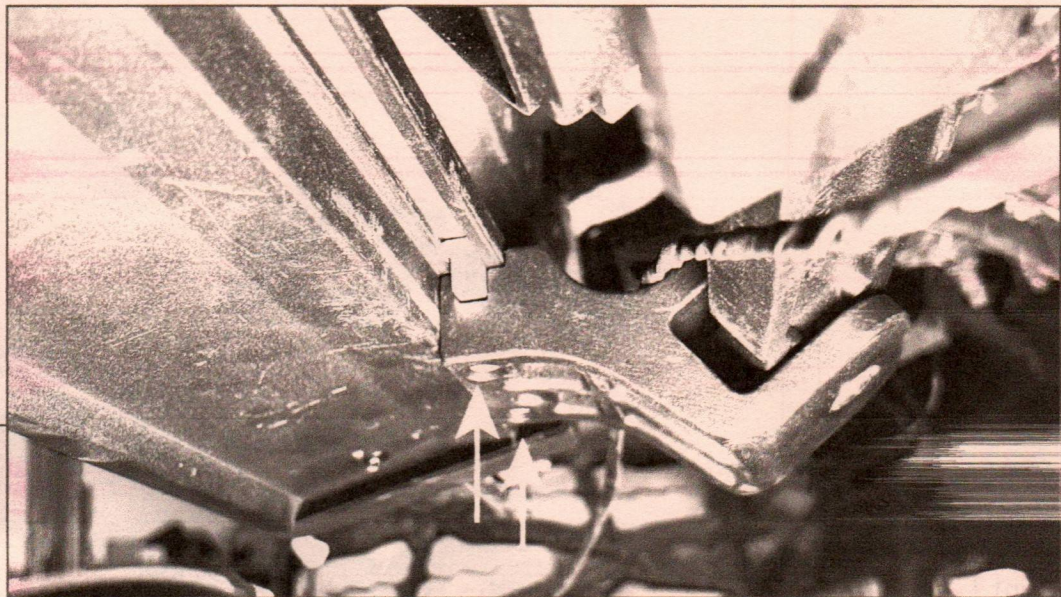
STEP 4
[JT FRAME
MODIFICATION
cont.]

Using a cutting tool (4.5" angle grinder recommended), remove the bracket from the vehicle frame. It is recommended to grind down the welds to match the level of the frame. Touch up any bare metal areas with paint to prevent corrosion/rust.

**STEP 5**

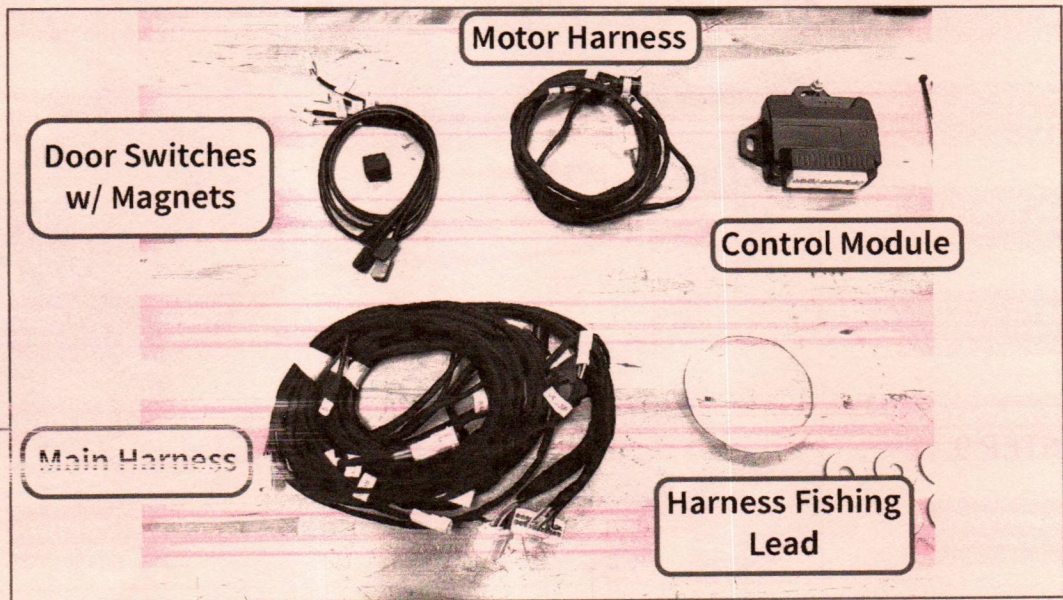
Lay out and identify the running boards. Each running board is side specific. The side of the running board with the wire leads will fit towards the front of the vehicle.

Remove the pre-installed (6) Allen bolts from the sliding mounting blocks.

**STEP 6**

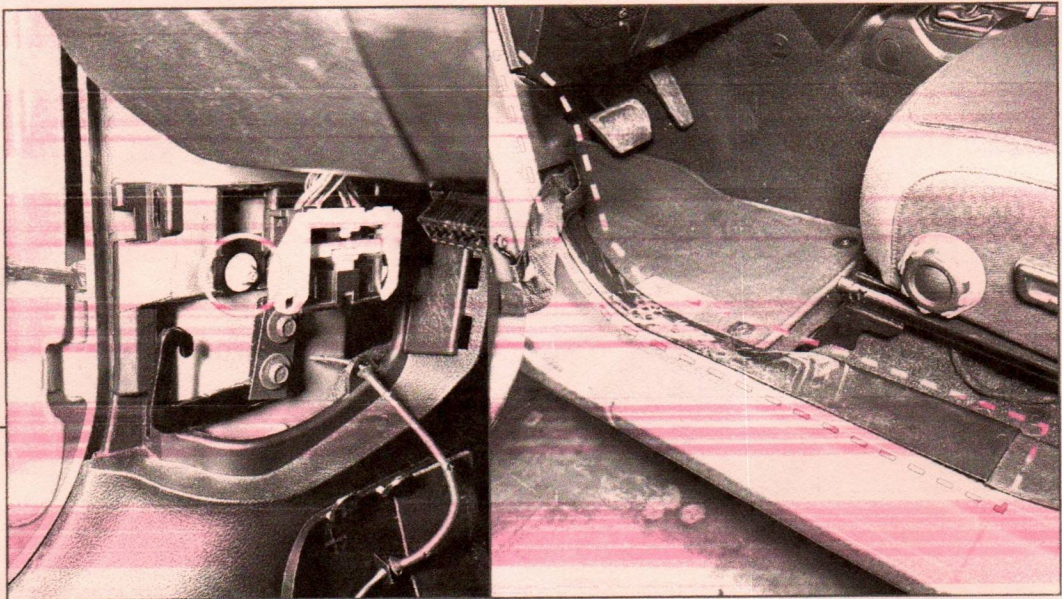
With a helper, fit the running board to the mounting brackets. Align the sliding mounting blocks on the running board into the mounting bracket, and loosely secure using the previously removed (6) Allen bolts. The running board can be adjusted to best fit the vehicle. Adjust as necessary for best fit and tighten the Allen bolts. The running board LED wiring will be close to the center mounting bracket.

If necessary, the (10) M8 shims can be used between the body and the mounting brackets to space the running board mounting brackets away from the body to allow better fitment.

STEP 7

Lay out and identify the wiring components. Each connector of the harness is labeled for the specific mounting point on the vehicle.

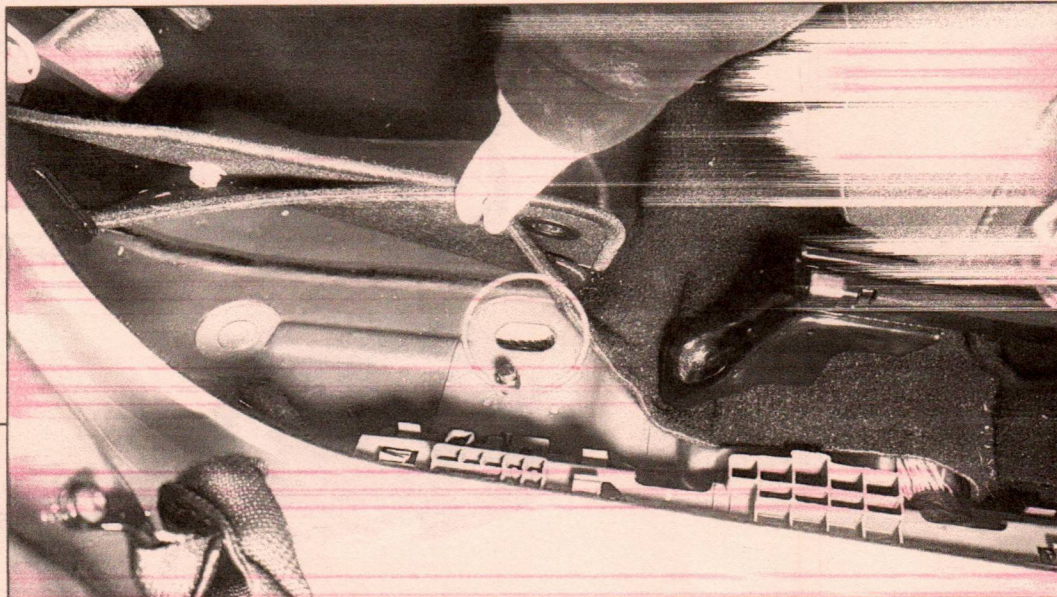
When routing each wire lead, take your time to neatly route each wire lead. This is crucial to proper harness fitment.

STEP 8

Using a panel removal tool, remove the panel covering the door wiring harness. Disconnect the door harness using the hinge connector. Unhook the door strap. Use a pry tool to remove the connector from the vehicle body. Remove (1) 10mm nut from the plastic trim panel.

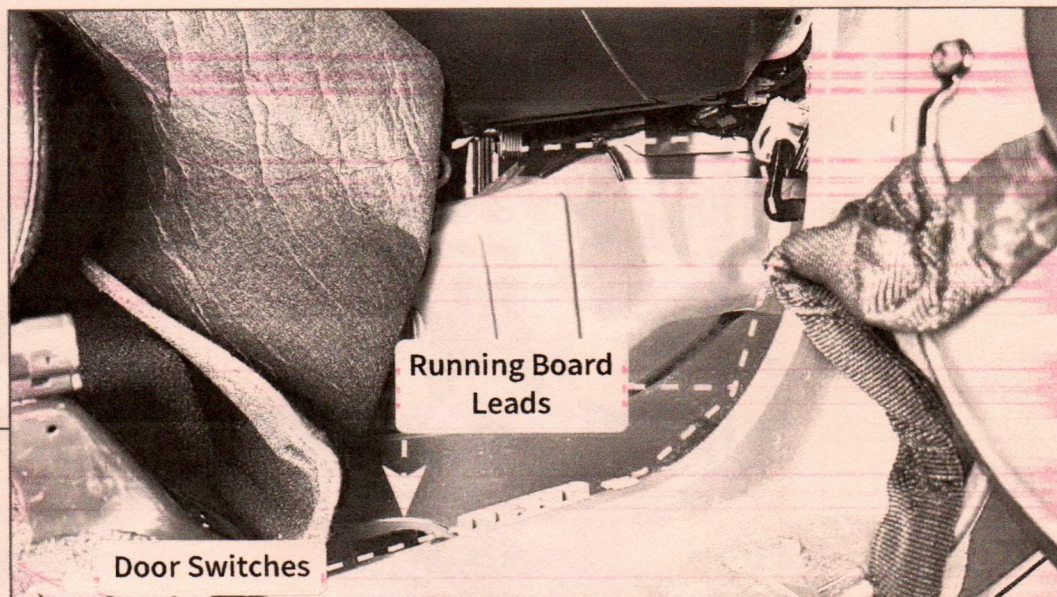
Use a panel trim tool to release the retainers securing the plastic trim panel to the vehicle body. Moderate force will be required to dislodge the panel from the body.

Repeat this step to the opposite side of the vehicle.

**STEP 9**

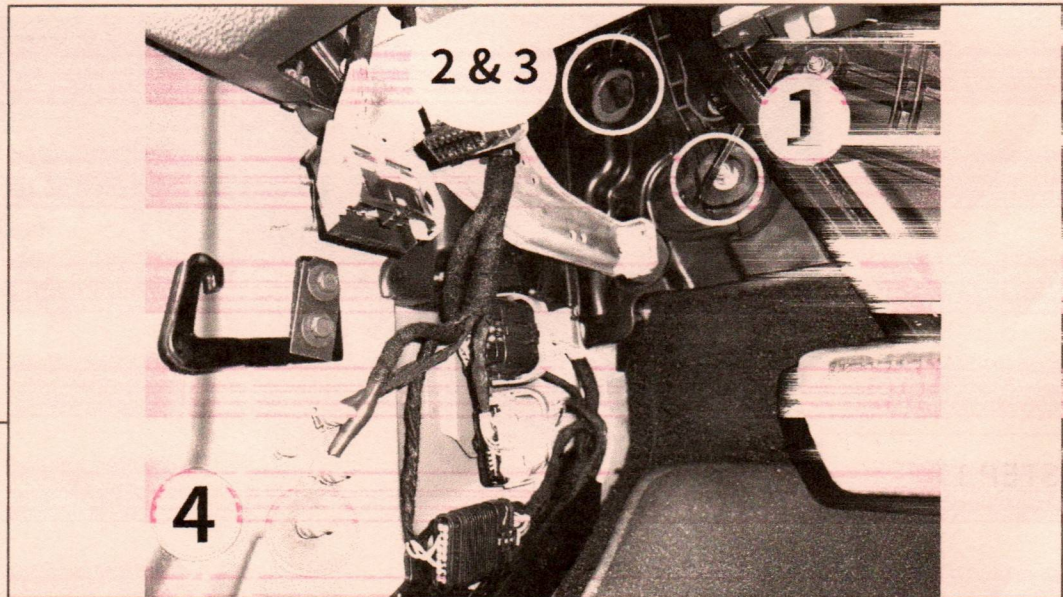
Lift the carpet to locate the floor drain grommets. Cut a "X" in the grommet to allow the running board harnesses to route to the exterior of the vehicle.

Repeat this step to the opposite side of the vehicle.

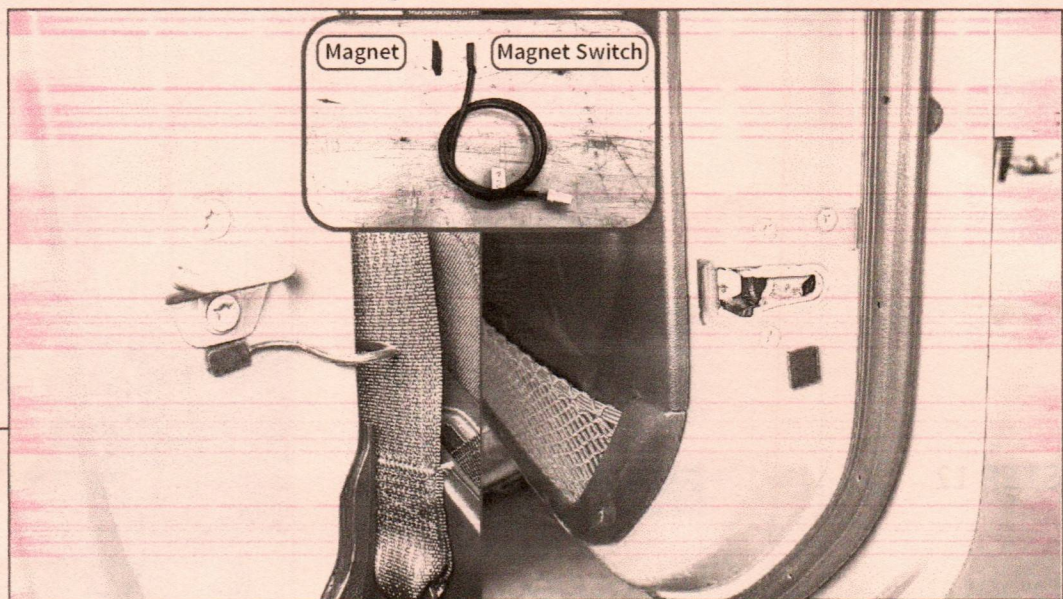
**STEP 10**

Begin with the main wiring harness on the driver side (LH) of the vehicle. Route the RH labeled wire leads along the vehicle floor under the carpet and behind the bottom of the dashboard.

For easiest routing method, push the included (1) harness fishing lead from the passenger side of the dashboard to the driver side of the dashboard. Once the fishing lead is accessible on the driver side, use electrical tape to secure the RH wire leads to the fishing lead, and then pull the fishing lead towards the passenger side to pull the wire leads.

**STEP 13**

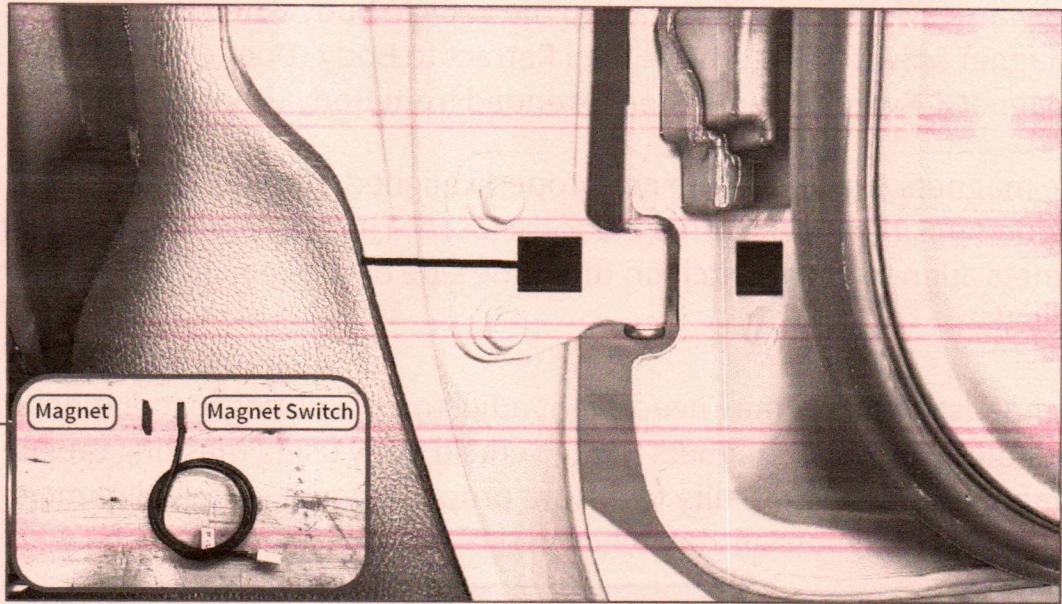
- Under the dashboard, secure the module to the vehicle dashboard brace using the module pre-installed M6 flange nut [1].
- Cut a small slit in the firewall grommet to prepare for the 12V+ wire lead routing to the battery [2].
- Route the 12V+ lead through the previously cut firewall grommet. Then, plug in the fused section of the lead, and route the lead to the battery [3].
- Route the Ground lead to the vehicle parking brake along the floor. Loosen (1) 10mm bolt, fit the terminal connector into the bolt, and tighten the bolt into place [4].

**STEP 14**

Front Door: Clean the vehicle door opening & vehicle door under the door limiting bar using (1) alcohol prep pad, and allow to fully dry.

Door Switch: Peel the tape backing, and adhere the switch under the door striker.

Magnet: Peel the tape backing, and adhere the magnet 1" below the door latch.

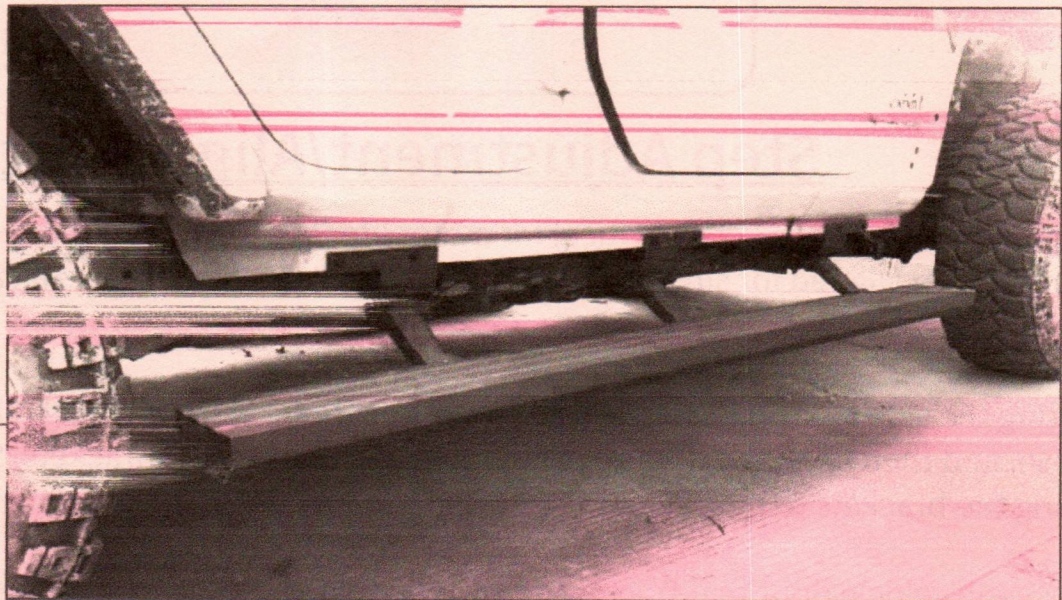


STEP 15

Rear Door: Clean the vehicle door opening & vehicle door along the lower door hinge.

Door Switch: Peel the tape backing, and adhere the switch to the center of the lower door hinge.

Magnet: Peel the tape backing, and adhere the magnet 1" below the foam door seal.



STEP 16

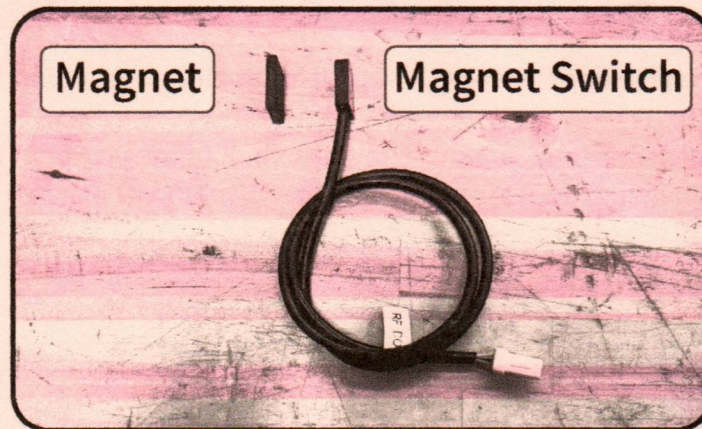
Connect the 12V+ wire lead to the Positive (+) battery terminal. Test each door to ensure side step functionality. Route all wiring using the included cable ties and wire retainers.

Installation is now complete.

Installation Notes

Magnet Switches

- With the magnet switches plugged into the main harness, the step assembly will extend downwards. The steps will retract to the vehicle body when the magnets meet the switches.
Magnet & Switch Together = Step Retract to Body (Door Closed)
Magnet & Switch Apart = Step Extended from Body (Door Open)
- If the magnets & switches are not properly aligned, the step assembly will remain in the extended position even with the doors closed. The step assembly will retract when all magnets align to each switch on the same side of the vehicle with the entire step harness plugged in.
- The magnet switches may need slight adjustments during installation. It is recommended to install the switches & magnets to the vehicle body using masking tape initially, and then testing the step functionality to ensure proper magnet switch alignment before permanently adhering the magnets and switches to the vehicle.



Step Adjustment/Alignment

- Aligning the step/brackets is critical for motor life. The following steps will ensure the brackets are aligned for smooth motor operation. Failure to do so can cause premature motor failure.
- During the side step installation to the mounting brackets, ensure all (6) Allen bolts are loose, and then open the door to extend the step assembly & brackets. Slide the assembly along the brackets to best align to the vehicle in the extended position.
- Close the vehicle door to retract the step assembly, but while the step is retracting, assist the step into position while pushing/pulling the step to ensure the mounting points are fully engaged in each bracket. Occasionally, the step assembly needs these adjustment to fully seat to provide smooth movement.
- Once the step is fully seated into the vehicle brackets, fully tighten the (6) Allen bolts.