

MAXIMUS-3



JT/GLADIATOR TRUCK

MAXIMUS-3 OVERLAND BED RACK (BED RACK ONLY)

INSTALLATION GUIDES

PLEASE MAKE SURE YOU READ AND UNDERSTAND THE ENTIRE INSTALLATION GUIDE BEFORE YOU START. WE EXPECT YOU TO HAVE BASIC MECHANICAL ABILITIES TO PERFORM THIS INSTALLATION.

WE RECOMMEND THAT YOU SEPARATE AND IDENTIFY ALL THE PARTS AND HARDWARE KITS YOU RECEIVED WITH YOUR SHIPMENT BEFORE YOU PROCEED TO DISASSEMBLE YOUR JEEP.



IMPORTANT

Follow these instructions precisely. Maximus-3 is not liable for any damaged caused from improperly installed products. It is the purchaser's responsibility to ensure both the installation and maintenance is performed properly as set-forth in this guide. We recommend using anti seize past on all non-thread lock bolts.

Component List:**Quantity****Tools Required:**

Riser Tube – Front	1
Riser Tube – Rear	1
Corner Brackets – Front - LHS & RHS	1
Corner Brackets – Rear - LHS & RHS	1
Aluminum Side Panels – LHS & RHS	1
Aluminum Top Planks	3
Plank Brackets	6
Aluminum Cross Bars (C1, C2, C3, C4)	3
Option: Tie-down Strips – LHS & RHS	1

- ✓ Metric Drive Sockets
- ✓ Metric Open Wrenches
- ✓ Metric Allen Keys Set
- ✓ Power Drill
- ✓ 1/8" & 3/8" Drill Bits

Hardware Kits:**Quantity****Corner Brackets to Vehicle (Option: Tie-down Strips)**

M8 x 25 flanged Hex Bolts – Yellow	2
M6 x 35 Hex Bolts – Black	10
M6 x 16 Washers - Black	10

Riser Tubes to Vehicle (Front & Rear)

M8 x 25 Button Socket Bolt – Black	8
M8 x 16 Washers – Black	8
M8 Flag Nut – Zinc	2
M8 Chancel Nut – Zinc	4

Aluminum Side Panels to Riser Tubes (LHS & RHS)

M8 x 30 Button Socket SS Bolts – Black	16
M8 x 14 Stainless Steel Washer	16

Aluminum Cross bars to Side Panels

M8 x 16 Button Socket SS Bolts – Black	8
M8 x 14 Washers – Black	8
M8 Chancel Nuts – Zinc	8

Plank Brackets to Aluminum Planks

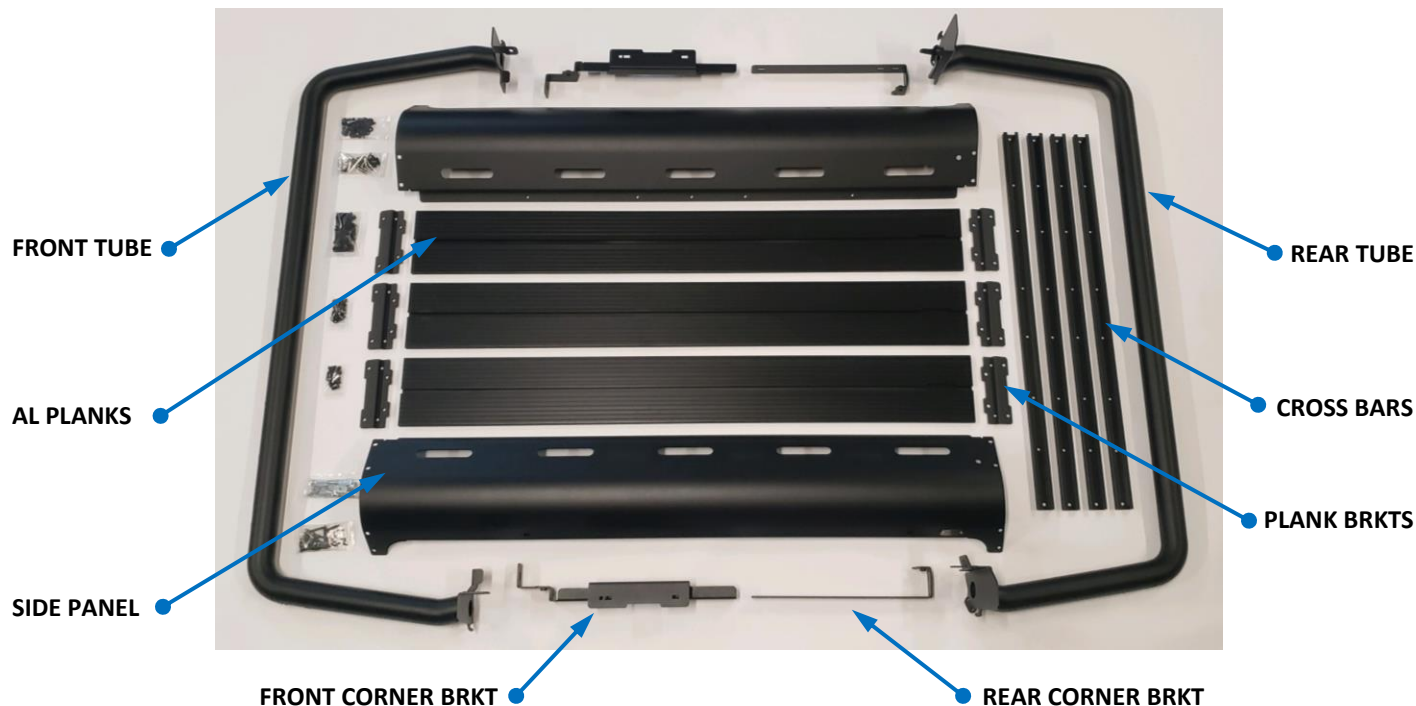
M8 x 16 Button Socket SS Bolts – Black	12
M8 x 14 Washers – Black	12

Plank Assemblies to Riser Tubes

M8 x 30 Button Socket SS Bolts – Black	12
M8 x 14 Stainless Steel Washer	12

Aluminum Cross Bars to Planks

M6 x 16 Button Socket SS Bolts – Black	24
M6 x 16 Washers – Black	24
M6 SS Flanged Nuts	24



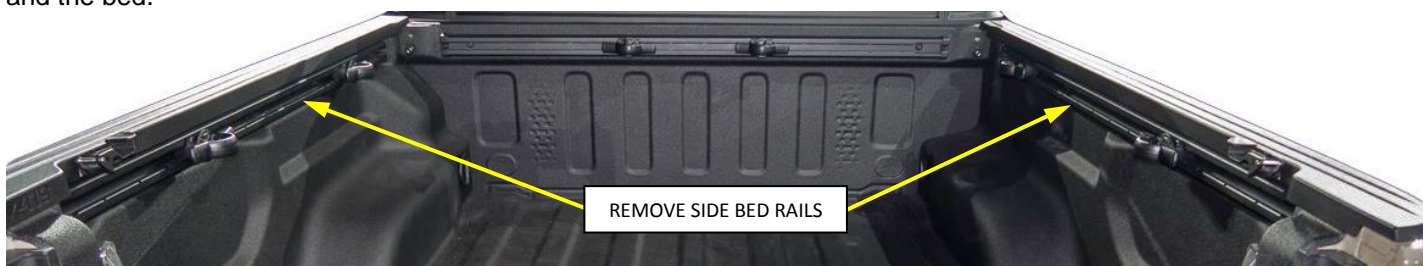
INSTALLATION STEPS

WE RECOMMEND USING ANTI SEIZE PASTE ON ALL BOLTS

1. REMOVE FACTORY SIDE TRAIL RAILS.

If your vehicle did not come with factory Trail Rails option, skip to step 2.

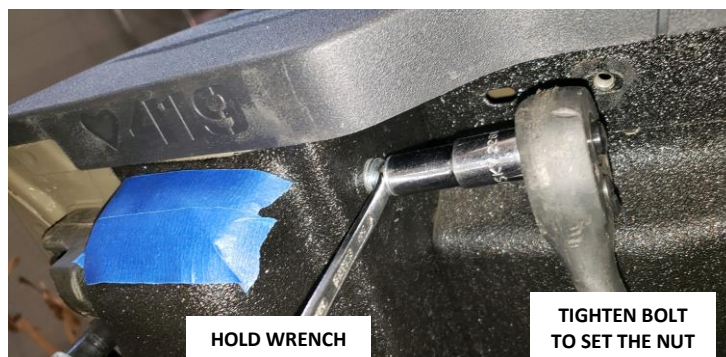
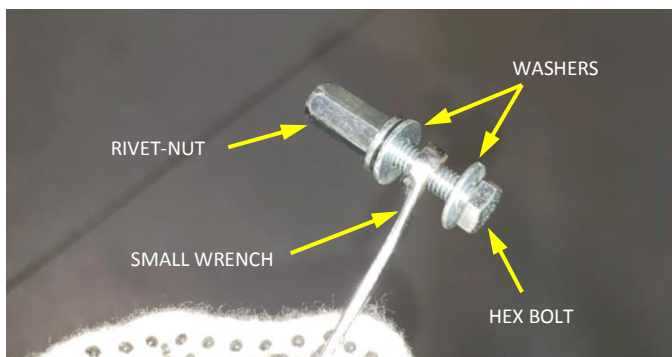
Using 10MM socket remove side Bed Rails. Use a pry bar or flat screwdriver to brake double-sided tape between the rails and the bed.



2. INSTALL M6 RIVET-NUTS.

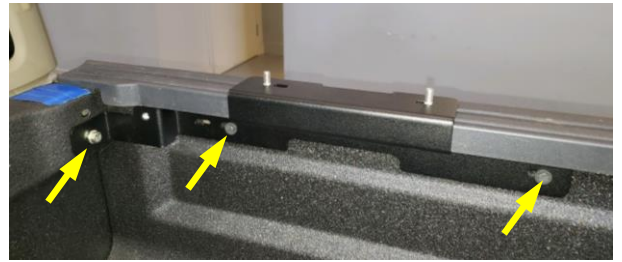
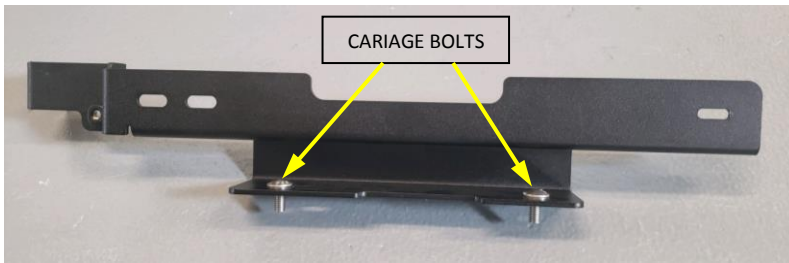
If your vehicle came with rivet-nut installed for factory Trail Rails, Skip to step 3.

Install M6 Rivet-nut in hexagonal hole in the bed rear corner as shown below.

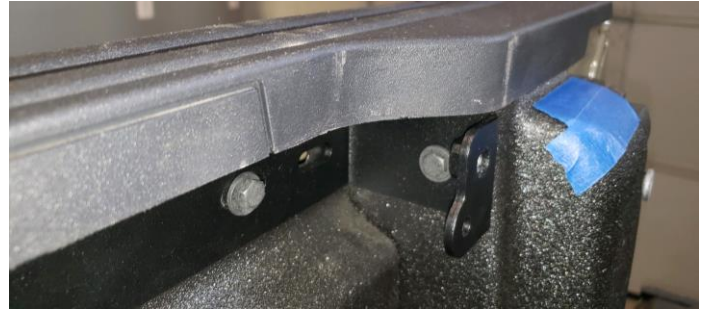


3. INSTALL CORNER BRACKETS TO THE VEHICLE (OPTIONAL: MAXIMUS-3 TIE-DOWN STRIPS).

Install Front Corner Brackets to vehicle using 10MM and 13MM socket/wrench as shown below. Do not tighten for now.
Option: if you are installing a Ladder(s) or Accessories Rack(s) you must insert carriage bolts in the square holes in the brackets before you place them over the plastic trim, ... as shown below. Please refer to accessories' installation guides.



Install Rear Corner Brackets to vehicle using 10MM and 13MM socket/wrench as shown below. Do not tighten for now.



4. MARK AND DRILL FRONT AND REAR RISER TUBES MOUNT LOCATIONS ON THE VEHICLE.

Place front Riser Tube on the vehicle as shown, push flanges forward against front wall to locate and temporally bolt down using M8 Button Socket Bolts.

Mark top mounting holes as shown and drill starting with 1/8" pilot holes then drill final holes with 3/8" drill bit. Remove the Riser Tube and touch up the holes with protective paint to prevent rusting.



Place Rear Riser Tube on the vehicle as shown, align tube flanges to corners of the bed and Corner Brackets to locate and temporally bolt down using M8 Button Socket Bolts.

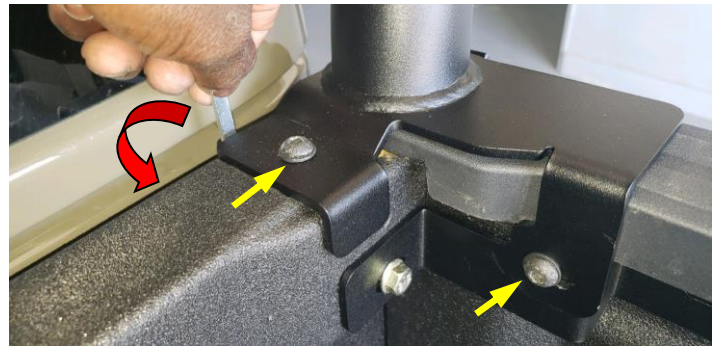
Mark top mounting holes as shown and drill starting with 1/8" pilot holes then drill final holes with 3/8" drill bit. Remove the Riser Tube and touch up the holes with protective paint to prevent rusting.



Make sure you touched up all drilled holes and scratched up surfaces with protective paint to prevent rusting.

5. ASSEMBLE FRONT AND REAR RISER TUBES TO THE VEHICLE.

Install Front Riser Tube using M8 x 25 Button Socket Bolts, Washers and Chanel nuts (or Flag Nuts) supplied, as shown. Now tighten Corner Brackets bolts.



BOLT REAR RISER TUBE TO THE VEHICLE:

Using 8MM socket/wrench, remove screws holding rear taillights and disconnect by pulling backwards to unclip. Using M8 x 25 bolts, washers and Chanel nuts provided, bolt Rear Riser Tube to the vehicle and Corner Brackets as shown below. Insert Chanel nuts up through taillight openings. Now tighten Corner Brackets bolts.



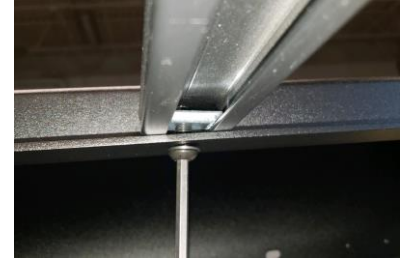
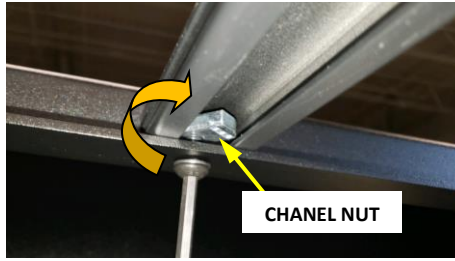
6. ASSEMBLE ALUMINUM SIDE PANELS TO RISER TUBES (LHS & RHS).

Install Aluminum Side Panels to Riser Tubes using M8 x 30 Button Socket SS Bolts and Washers - secure top bolts first then the sides. Note, the logo tag side is rear.

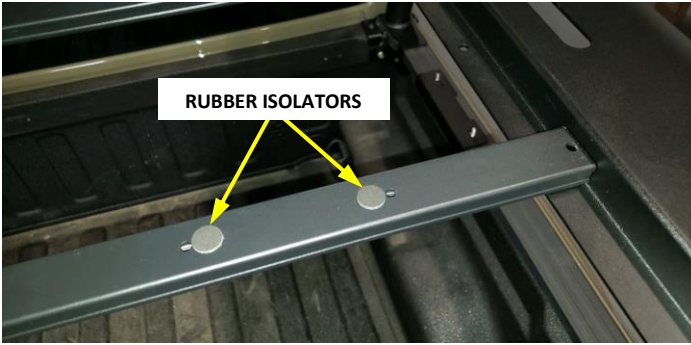


7. INSTAL ALUMINUM CROSS BARS.

Place Aluminum Cross Bars on Side Panels as shown. Note the different lengths of cross bars – Install in order of length, longest bar goes in the front and shortest in the rear of the rack. Using M8 x 16 Button Socket Bolts, Washers and Chanel Nuts, bolt Cross Bars to Side Panels as shown below. Do not tighten for now as you may need to adjust.



Add adhesive-back rubber isolators to cross bars, between plank mounting holes as shown below.



8. PRE-ASSEMBLE ALUMINUM PLANK ASSEMBLIES (3 PLANKS, 6 BRACKETS, 24 FLANGED NUTS).

Bolt Plank Brackets to Aluminum Planks at one end of the planks as shown. Do it for all 3 planks.

Slide 4 of M6 Flange Nuts in each channel track in the Aluminum Planks. Total of 8 Flanged Nuts per plank.

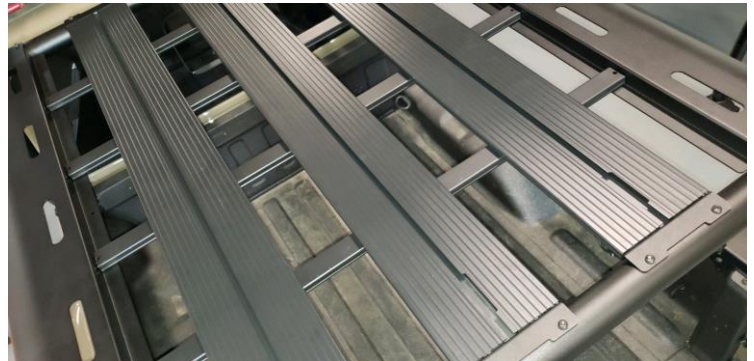
Now bolt the remaining Plank Brackets to the other end of the plank to complete the Plank Assemblies.



9. INSTALL ALUMINUM PLANK ASSEMBLIES TO RISER TUBES (QTY 3 PLANK ASSEMBLIES).

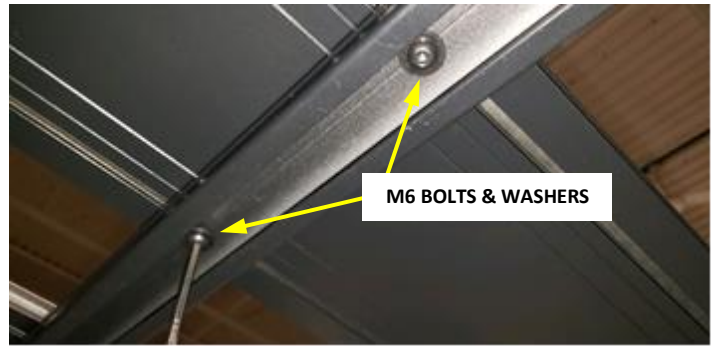
Bolt Plank Assemblies to front and rear Riser Tubes using M8 x 30 Button Socket Bolts and Washers as shown below.

Align and adjust gaps/clearances and tighten all bolts.



10. BOLT ALUMINUM CROSS BARS TO ALUMINUM PLANKS.

Slide the Flanged Nuts in the Planks to line up with holes in the Cross Bars and bolt together with M6 Bolts and Washers. Align/adjust Cross Bars and Planks and tighten all bolts.



11. OPTION: INSTALL SIDE LADDER AND/OR ACCESSORIES RACK.

Bolt on Side Ladder or Accessories Rack using hardware provided. Please refer to accessories' Installation Guides.

Your installation is complete. If you have questions regarding this installation please contact us at sales@maximus-3.com or call 248-821-6654.

Website: <http://www.maximus-3.com>