



TWO BAR REMOVABLE ROOF RACK

(2018-2023+ WRANGLER JL)
(2020-2023+ GLADIATOR JT)

INSTALLATION INSTRUCTIONS

CONTENTS

- (2) Roof Bars
- (4) Hard Top Clamping Brackets
- (4) Connecting Arms
- (4) M10x1.50 45mm Hex Bolts
- (4) M10x1.50 Folding Bolts
- (8) M10 Lock Washers
- (4) M10 Nuts
- (8) Small [20mm Diameter] M10 Flat Washers
- (4) Large [25mm Diameter] M10 Flat Washers
- (4) Concave Washers
- (4) Foam Pads
- (4) Rubber Insulators

TOOLS REQUIRED

- 17mm Socket
- 16mm Wrench
- Isopropyl Alcohol
- Microfiber Cloth

SKU # JG5950

STEP 1



Begin by sliding the hardtop clamping bracket onto the connecting arms, secure into place using (1) M10 folding bolt and (1) concave washer. Leave the bolt loose.

Repeat this procedure for all remaining brackets.

STEP 2



Connect the previously assembled brackets to the roof bars using (1) M10x1.50 x 45mm hex bolt, (1) M10 lock washer, (2) large M10 flat washers, and (1) M10 nut per side. Leave the bolts loose.

Repeat this procedure for all brackets.

**STEP 3**

Clean the hard top surface using isopropyl alcohol and a microfiber cloth. Using the provided foam pads, adhere the foam pads to the hardtop at the desired location for the roof bars.

**STEP 4**

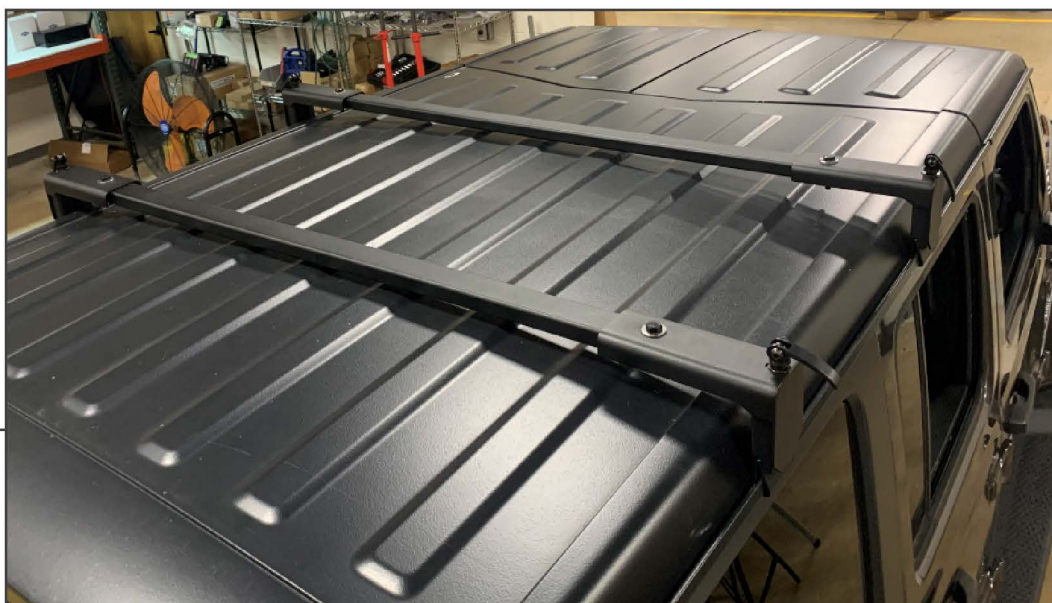
With assistance, lift the assembled roof bar over the top of the vehicle. Place (1) rubber insulator at the bottom of each hard top clamping bracket. Align the hard top clamping brackets with the hard top and tighten the folding bolt enough to hold the roof bars in place. Once the roof bars are in place, tighten the roof bar hardware using a 17mm socket and a 16mm wrench.

STEP 5



Tighten down the folding bolt until snug, then flip the handle to finalize tightening.

STEP 6



Installation is now complete.